

# COUNTRY OAKS NORTH THIRD ADDITION

KNOW ALL PERSONS BY THESE PRESENTS: That SW Development, LLC, a Minnesota limited liability company, owner of the following described property:

Outlot B, COUNTRY OAKS NORTH SECOND ADDITION, Anoka County, Minnesota.

Has caused the same to be surveyed and platted as COUNTRY OAKS NORTH THIRD ADDITION and does hereby dedicate to the public for public use the public ways and the drainage and utility easements as shown on this plat.

In witness whereof said SW Development, LLC, a Minnesota limited liability company, has caused these presents to be signed by its proper officer this 3 day of August 20 17

Signed: SW Development, LLC

By: Shawn P. Weinand Chief Manager  
Shawn P. Weinand

STATE OF MINNESOTA  
COUNTY OF Anoka

This instrument was acknowledged before me on 3rd day of August, 20 17 by Shawn P. Weinand, Chief Manager of SW Development, LLC, a Minnesota limited liability company.

Brenda L. Fildes

Brenda L Fildes  
Notary Public, Anoka County, Minnesota  
My Commission Expires 1/31/2021

I Dennis B. Olmstead do hereby certify that this plat was prepared by me or under my direct supervision; that I am a duly Licensed Land Surveyor in the State of Minnesota; that this plat is a correct representation of the boundary survey; that all mathematical data and labels are correctly designated on this plat; that all monuments depicted on this plat have been, or will be correctly set within one year; that all water boundaries and wet lands, as defined in Minnesota Statutes, Section 505.01, Subd. 3, as of the date of this certificate are shown and labeled on this plat; and all public ways are shown and labeled on this plat.

Dated this 31<sup>st</sup> day of July, 20 17.

Dennis B. Olmstead

Dennis B. Olmstead, Licensed Land Surveyor  
Minnesota License No. 18425

STATE OF Minnesota  
COUNTY OF Hennepin

This instrument was acknowledged before me this 31<sup>st</sup> day of July, 20 17 by Dennis B. Olmstead.

Susan L. Marks

Susan L. Marks  
Notary Public, Anoka County, Minnesota  
My Commission Expires 1/31/2020

City Council, City of Andover, Minnesota

This plat of COUNTRY OAKS NORTH THIRD ADDITION was approved and accepted by the City Council of the City of Andover, Minnesota at a regular meeting thereof held this 7<sup>th</sup> day of AUGUST, 20 17, and said plat is in compliance with the provisions of Minnesota Statutes, Section 505.03, Subd. 2.

City Council, City of Andover, Minnesota

By: Julie Orndorff, Mayor  
By: [Signature], Clerk

County Surveyor

I hereby certify that in accordance with Minnesota Statutes, Section 505.021, Subd. 11, this plat has been reviewed and approved this 18<sup>th</sup> day of September 20 17.

By: Larry D. Hoium by Charles F. Letzen, Deputy  
Larry D. Hoium  
Anoka County Surveyor

County Auditor/Treasurer

Pursuant to Minnesota Statutes, Section 505.021, Subd. 9, taxes payable in the year 20 17 on the land hereinbefore described have been paid. Also, pursuant to Minnesota Statutes, Section 272.12, there are no delinquent taxes and transfer entered this 16 day of Sept., 20 17.

Jonell M. Sawyer  
Property Tax Administrator

By: [Signature], Deputy

County Recorder/Registrar of Titles  
County of Anoka, State of Minnesota

I hereby certify that this plat of COUNTRY OAKS NORTH THIRD ADDITION was filed in the office of the County Recorder/Registrar of Titles for public record on this 18 day of Sept., 20 17, at 2:44 o'clock P.M. and was duly recorded as Document Number 2181143.001.

Jonell M. Sawyer  
County Recorder/Registrar of Titles

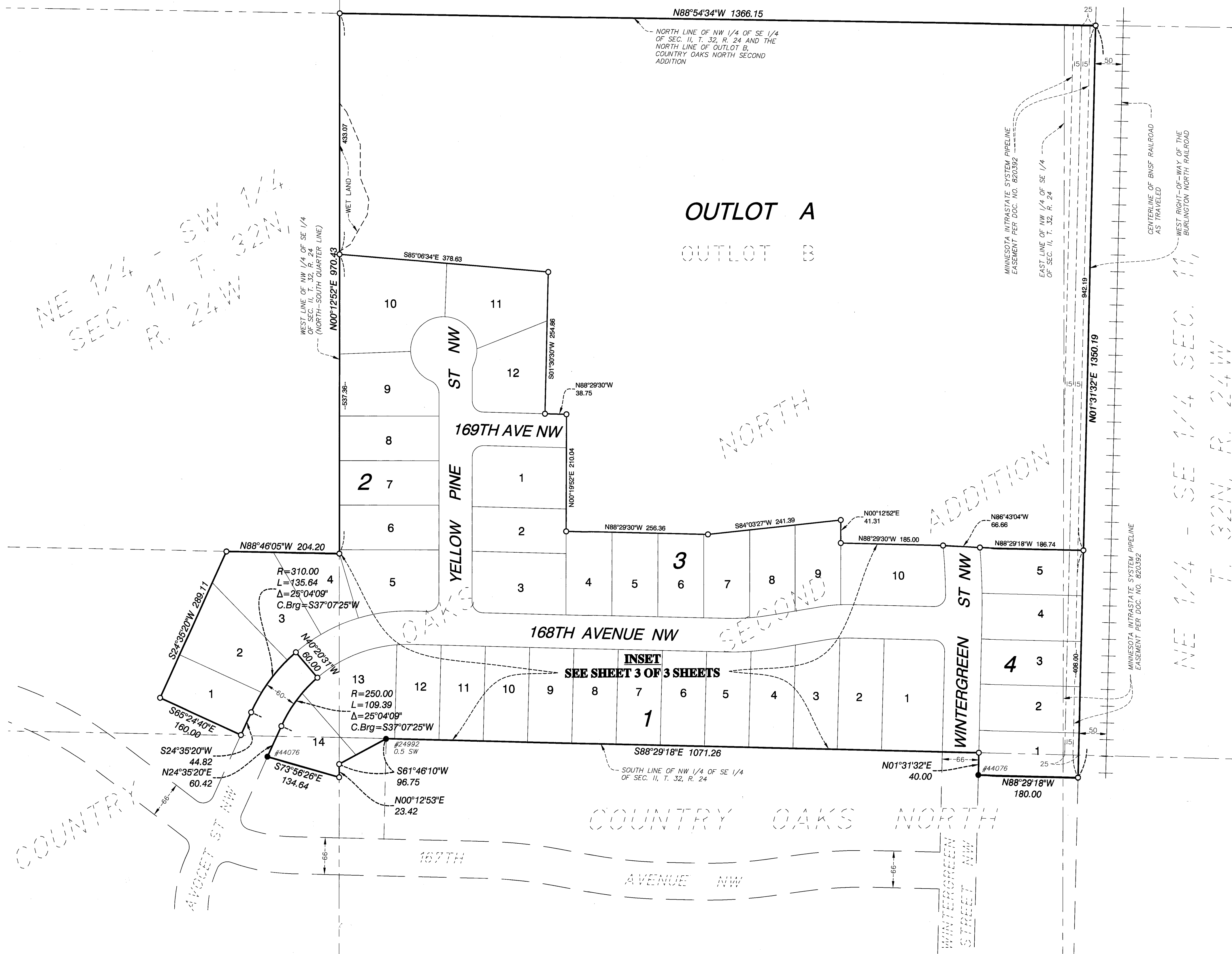
By: [Signature], Deputy

\$ 56



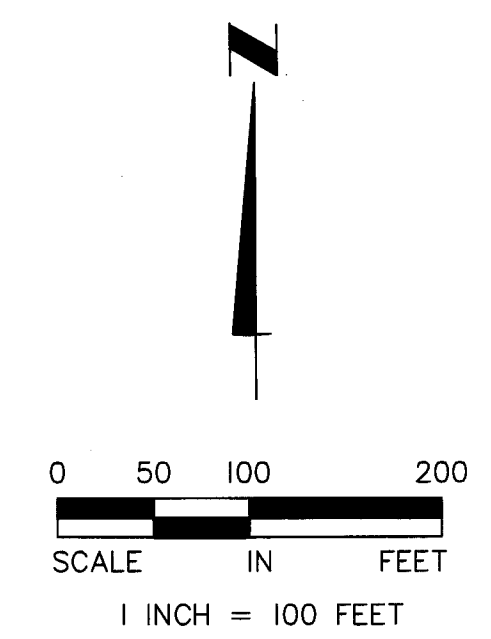
# COUNTRY OAKS NORTH THIRD ADDITION

NE 1/4 SEC. 11, T. 32N, R. 24W

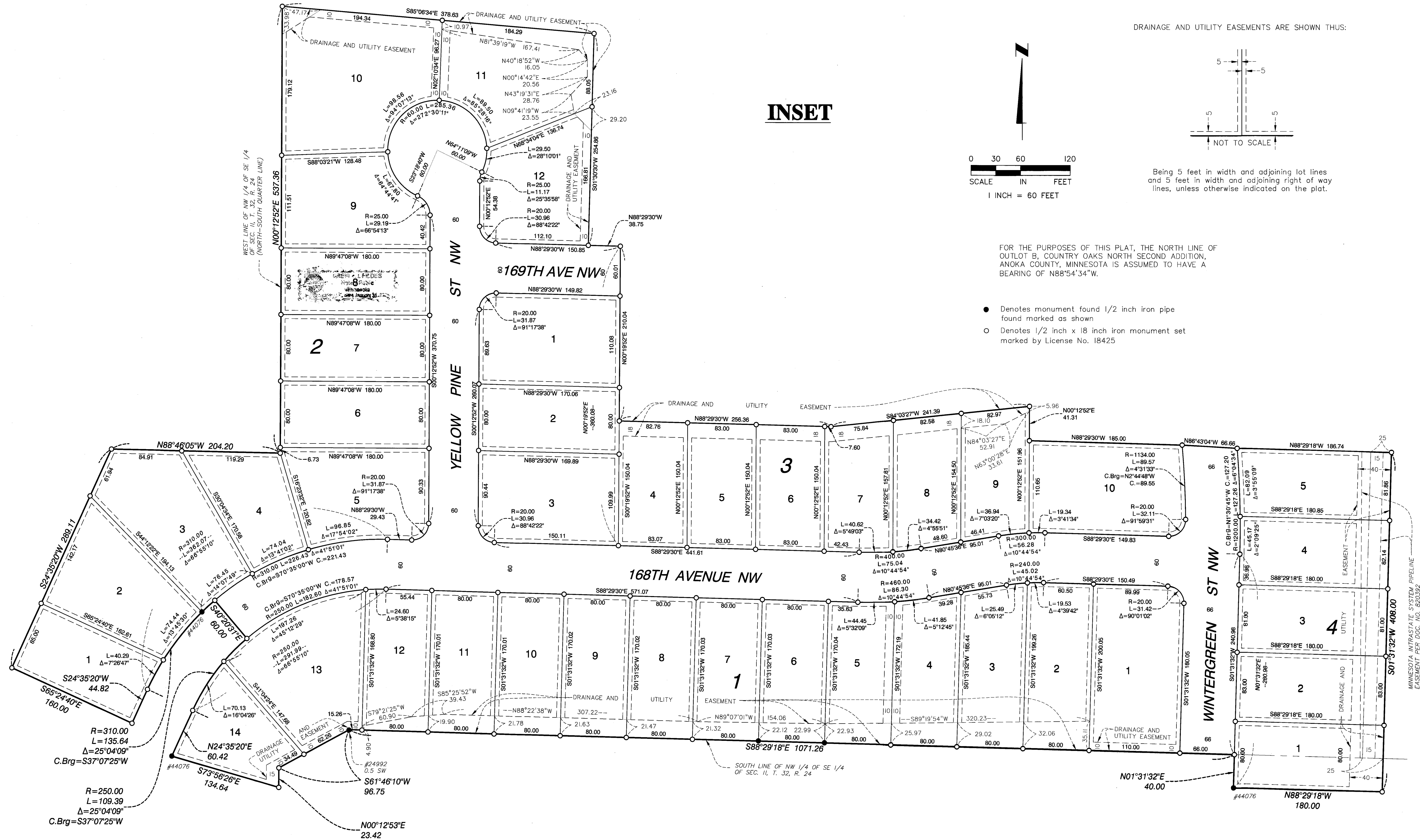


FOR THE PURPOSES OF THIS PLAT, THE NORTH LINE OF OUTLOT B, COUNTRY OAKS NORTH SECOND ADDITION, ANOKA COUNTY, MINNESOTA IS ASSUMED TO HAVE A BEARING OF N88°54'34"W.

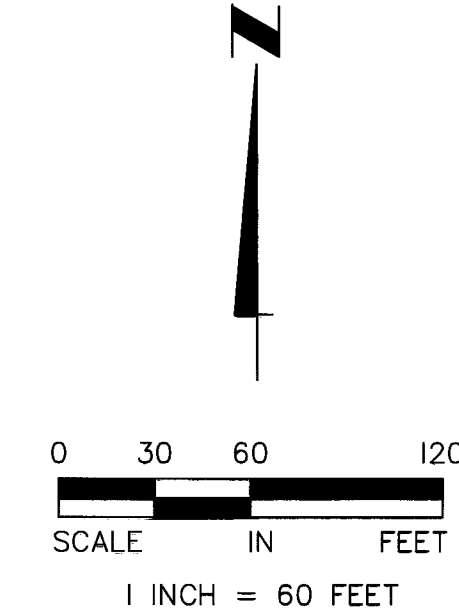
- Denotes monument found 1/2 inch iron pipe found marked as shown
- Denotes 1/2 inch x 18 inch iron monument set marked by License No. 18425



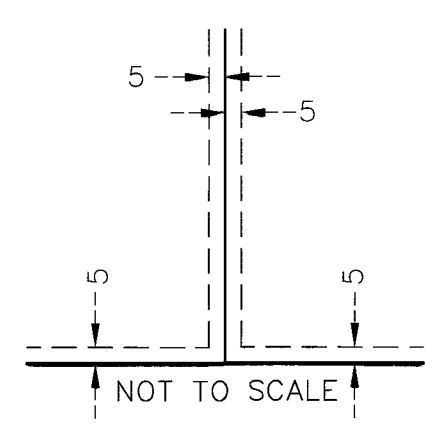
# COUNTRY OAKS NORTH THIRD ADDITION



**INSET**



DRAINAGE AND UTILITY EASEMENTS ARE SHOWN THUS:



Being 5 feet in width and adjoining lot lines and 5 feet in width and adjoining right of way lines, unless otherwise indicated on the plat.

FOR THE PURPOSES OF THIS PLAT, THE NORTH LINE OF OUTLOT B, COUNTRY OAKS NORTH SECOND ADDITION, ANOKA COUNTY, MINNESOTA IS ASSUMED TO HAVE A BEARING OF N88°54'34\"/>

- Denotes monument found 1/2 inch iron pipe found marked as shown
- Denotes 1/2 inch x 18 inch iron monument set marked by License No. 18425

MINNESOTA INFRASTRUCTURE SYSTEM PIPELINE EASEMENT PER DOC. NO. 820392