

# COUNTRY OAKS NORTH

Plat BK 77 of Abst Pg 29  
 9-8-14  
 2089825.001  
 CITY OF ANDOVER  
 COUNTY OF ANOKA  
 SEC. 11, TWP. 32, RGE. 24

KNOW ALL PERSONS BY THESE PRESENTS: That S.W. Land, LLC, a Minnesota limited liability company, owner of the following described property:

The Southwest Quarter of the Southeast Quarter of Section 11, Township 32, Range 24, Anoka County, Minnesota.

ALSO

That part of the Southeast Quarter of the Southeast Quarter of Section 11, Township 32, Range 24 lying westerly of the west right of way line of Burlington Northern Railroad as now laid out and traveled, Anoka County, Minnesota.

Has caused the same to be surveyed and platted as COUNTRY OAKS NORTH and does hereby dedicate to the public for public use the public ways and the drainage and utility easements as shown by this plat.

In witness whereof said S.W. Land, LLC, a Minnesota limited liability company, has caused these presents to be signed by its proper officer this 14<sup>th</sup> day of August, 2014.

S.W. Land, LLC

*Shawn P. Weinand*  
 Chief Manager  
 Shawn P. Weinand

STATE OF MINNESOTA  
 COUNTY OF ANOKA

This instrument was acknowledged before me on this 14<sup>th</sup> day of August, 2014, by Shawn P. Weinand, Chief Manager of S.W. Land, LLC, a Minnesota limited liability company.

*Michelle L. Hartner*  
 Notary Public, ANOKA County, Minnesota  
 My Commission Expires January 31, 2015



I Michael R. Williams do hereby certify that this plat was prepared by me or under my direct supervision; that I am a duly Licensed Land Surveyor in the State of Minnesota; that this plat is a correct representation of the boundary survey; that all mathematical data and labels are correctly designated on this plat; that all monuments depicted on this plat have been, or will be correctly set within one year; that all water boundaries and wet lands, as defined in Minnesota Statutes, Section 505.01, Subd. 3, as of the date of this certificate are shown and labeled on this plat; and all public ways are shown and labeled on this plat.

Dated this 6<sup>th</sup> day of August, 2014.

*Michael R. Williams*  
 Michael R. Williams, Licensed Land Surveyor  
 Minnesota License No. 44076

STATE OF MINNESOTA  
 COUNTY OF HENNEPIN

This instrument was acknowledged before me this 6<sup>th</sup> day of August, 2014 by Michael R. Williams.

*Teresa A. Lassegard*  
 Notary Public, Hennepin County, Minnesota  
 My Commission Expires January 31, 2016

CITY COUNCIL, CITY OF ANDOVER, MINNESOTA

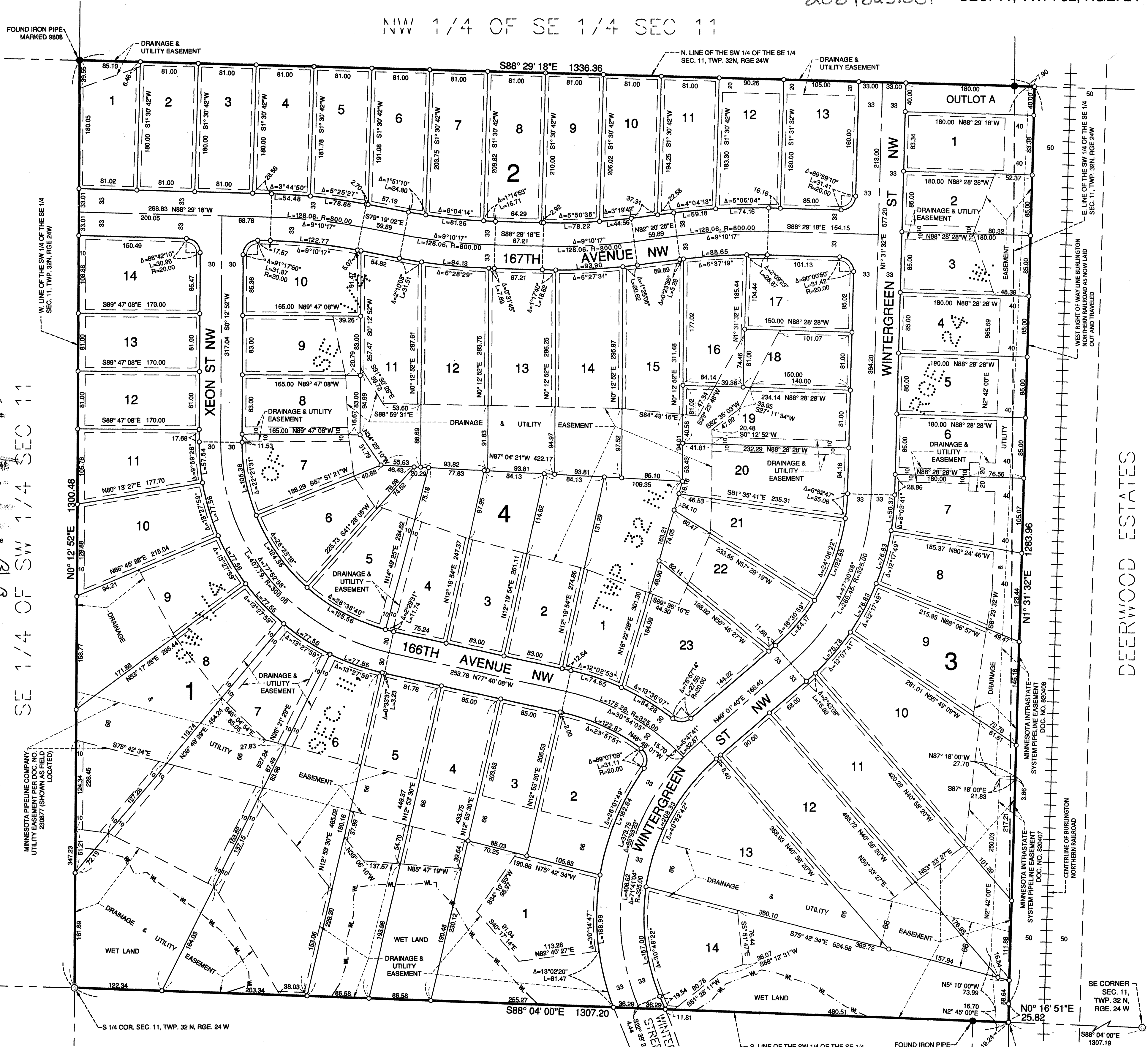
This plat of COUNTRY OAKS NORTH was approved and accepted by the City Council of the City of Andover, Minnesota at a regular meeting thereof held this 15<sup>th</sup> day of July, 2014, and said plat is in compliance with the provisions of Minnesota Statutes, Section 505.03, Subd. 2.

By *Mayor*  
 By *Clerk*

COUNTY SURVEYOR

I hereby certify that in accordance with Minnesota Statutes, Section 505.021, Subd. 11, this plat has been reviewed and approved this 8<sup>th</sup> day of September, 2014.

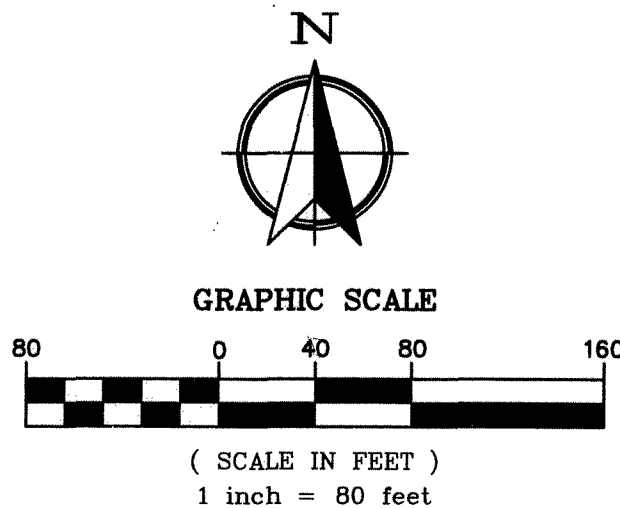
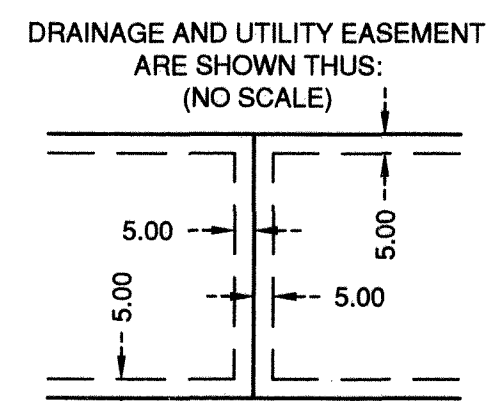
*Larry O. Hoium* by *Charles F. Kutzgen*, Deputy  
 Larry O. Hoium, Anoka County Surveyor



2089825.001  
 OFFICE OF RECORDER/REGISTRAR  
 STATE OF MINNESOTA COUNTY OF ANOKA  
 I hereby certify that the within instrument was filed in my office for record on the 8<sup>th</sup> day of August, 2014 and was duly recorded in book 29 page 17  
*Jonell M. Sawyer*  
 Recorder/Registrar of Titles  
*By: M. W. Wenzinger*

I HEREBY CERTIFY THAT THE CURRENT AND DELINQUENT TAXES ON THE LANDS DESCRIBED WITHIN ARE PAID AND THE TRANSFER IS ENTERED  
9-8-14  
*Jonell M. Sawyer*  
 PROPERTY TAX ADMINISTRATOR  
 BY *M. W. Wenzinger*  
 DEPUTY PROPERTY TAX ADMINISTRATOR

- LEGEND**
- DENOTES 1/2" IRON MONUMENT FOUND
  - DENOTES IRON MONUMENT SET WITH CAP STAMPED "RLS 44076"
  - DENOTES FOUND ANOKA COUNTY MONUMENT
  - W — WET LAND



BEING 5.00 FEET IN WIDTH AND ADJOINING LOT LINES, AND 5.00 FEET IN WIDTH AND ADJOINING RIGHT OF WAY LINES, UNLESS OTHERWISE INDICATED, AS SHOWN ON THIS PLAT.

THE ORIENTATION OF THIS BEARING SYSTEM IS BASED ON THE NORTH LINE OF THE SW 1/4 OF THE SE 1/4 SECTION 11, TOWNSHIP 32 NORTH, RANGE 24 WEST, WHICH IS ASSUMED TO BEAR S88°29'18"E.

\$56.00

COUNTRY OAKS WEST

