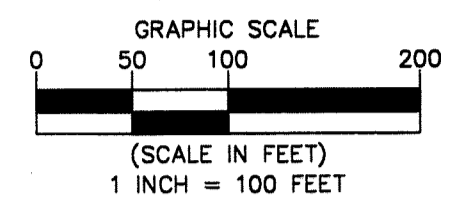
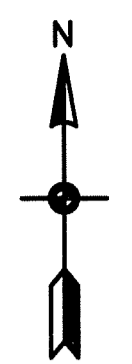
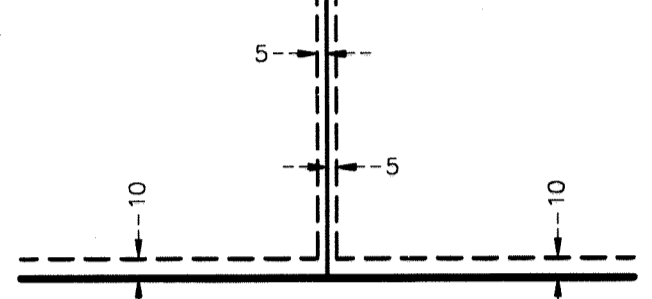


COUNTRY VIEW ACRES SECOND ADDITION

CITY OF NOWTHEN
COUNTY OF ANOKA
SEC. 29, TWP. 33, RGE. 25



DRAINAGE AND UTILITY EASEMENTS ARE SHOWN THUS:



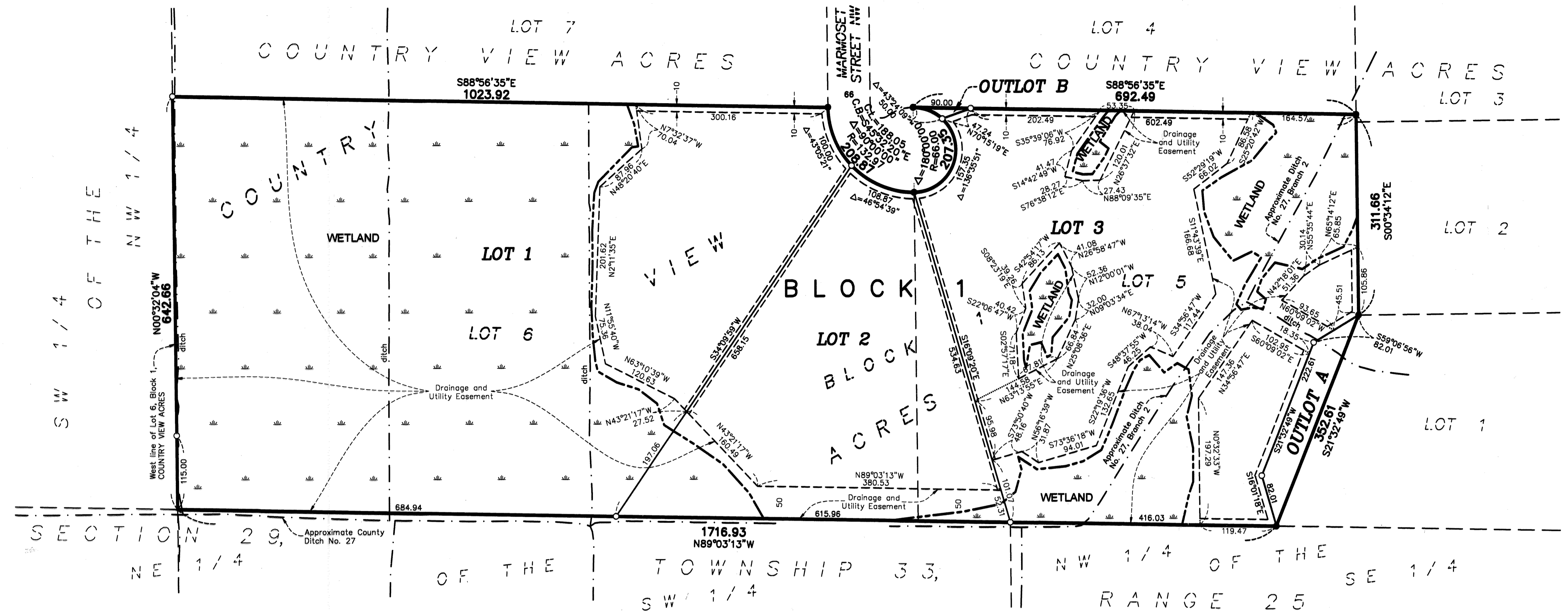
being 5 feet in width, and adjoining side lot lines, and 10 feet in width and adjoining right of way lines and rear lot lines unless otherwise shown on this plat.

For the purpose of this plat, the West line of Lot 6, Block 1, COUNTRY VIEW ACRES is assumed to have a bearing of North 00 degrees 32 minutes 04 seconds West.

○ Denotes 5/8 inch by 14 inch Rebar, set or to be set within one year of recording of this plat and marked with license number 40361

● Denotes Found Iron Monument, marked with RLS 15233 unless otherwise noted

■ Denotes Wetlands provided by Kjalhaug Environmental Services Company in 2021



KNOW ALL PERSONS BY THESE PRESENTS: That DH Thai Group dated November 17, 1994, an Arizona trust organization, owner, and MarBuc Enterprise LLP, a Minnesota limited liability partnership, contract for deed purchaser, of the following described property:

Lots 5 and 6, Block 1, COUNTRY VIEW ACRES, according to the recorded plat thereof, Anoka County, Minnesota

Have caused the same to be surveyed and platted as COUNTRY VIEW ACRES SECOND ADDITION and do hereby dedicate to the public for public use the drainage and utility easements as shown on this plat.

In witness whereof said DH Thai Group dated November 17, 1994, an Arizona trust organization, has caused these presents to be signed by its proper officer this 30th day of July, 2022

DH Thai Group dated November 17, 1994
Richard H. Moorhouse
Richard Moorhouse, Managing Director and Trustee

STATE OF California
COUNTY OF El Dorado

This instrument was acknowledged before me on July 30th 2022 by Richard Moorhouse, managing director and trustee of DH Thai Group dated November 17, 1994, an Arizona trust organization, on behalf of the organization.

Alana P. Underwood (Signed)
Alana P. Underwood (Printed)
Notary Public, California
My commission expires 09/21/2024
2333459

In witness whereof said MarBuc Enterprise LLP, a Minnesota limited liability partnership, has caused these presents to be signed by its proper partner this 29th day of June, 2022.

MarBuc Enterprise LLP
Charles V. Swirtz
Charles V. Swirtz, President

STATE OF Minnesota
COUNTY OF Sherburne

This instrument was acknowledged before me on 29th June 2022 by Charles V. Swirtz, president of MarBuc Enterprise LLP, a Minnesota limited liability partnership, on behalf of the partnership.

Charlotte Westberg (Signed)
Charlotte Westberg (Printed)
Notary Public, Sherburne
My commission expires 01/31/2026

I, Thomas R. Balluff do hereby certify that this plat was prepared by me or under my direct supervision; that I am a duly Licensed Land Surveyor in the State of Minnesota; that this plat is a correct representation of the boundary survey; that all mathematical data and labels are correctly designated on this plat; that all monuments depicted on this plat have been, or will be correctly set within one year; that all water boundaries and wet lands, as defined in Minnesota Statutes, Section 505.01, Subd. 3, as of the date of this certificate are shown and labeled on this plat; and all public ways are shown and labeled on this plat.

Dated this 27th day of JUNE, 2022.

Thomas R. Balluff
Thomas R. Balluff, Licensed Land Surveyor
Minnesota License No. 40361

STATE OF Minnesota
COUNTY OF Anoka

This instrument was acknowledged before me on June 27, 2022 by Thomas R. Balluff.

Cynthia J. Morica (Signed)
Cynthia J. Morica (Printed)
Notary Public, Hennepin County, Minnesota
My commission expires January 31, 2025

CITY COUNCIL, CITY OF NOWTHEN, MINNESOTA

This plat of COUNTRY VIEW ACRES SECOND ADDITION was approved and accepted by the City Council of the City of Nowthen, Minnesota at a regular meeting thereof held this 9th day of JUNE, 2022 and said plat is in compliance with the provisions of Minnesota Statutes, Section 505.03, Subd. 2.

CITY COUNCIL, CITY OF NOWTHEN, MINNESOTA

By: Mayor Mayor By: Clerk Clerk

COUNTY SURVEYOR

I hereby certify that in accordance with Minnesota Statutes, Section 505.021, Subd. 11, this plat has been reviewed and approved this 14th day of September, 2022

By: David M. Ziegemeier
David M. Ziegemeier
Anoka County Surveyor

COUNTY AUDITOR/TREASURER

Pursuant to Minnesota Statutes, Section 505.021, Subd. 9, taxes payable in the year 2022 on the land hereinbefore described have been paid. Also, pursuant to Minnesota Statutes, Section 272.12, there are no delinquent taxes and transfer entered this 14 day of September, 2022.

Pamela J. LeBlanc
Pamela J. LeBlanc
Property Tax Administrator
By: Deputy Deputy

COUNTY RECORDER/REGISTRAR OF TITLES

County of Anoka, State of Minnesota

I hereby certify that this plat of COUNTRY VIEW ACRES SECOND ADDITION was filed in the office of the County Recorder/Registrar of Titles for public record on this 14 day of September, 2022, at 9:46 o'clock A.M. and was duly recorded as Document Number 2375742.005

Pamela J. LeBlanc
County Recorder/Registrar of Titles
By: Deputy Deputy

