

COUNTRY VIEW ACRES

BURNS TOWNSHIP
COUNTY OF ANOKA

KNOW ALL MEN BY THESE PRESENTS: That Orren Koehler and Clairejean Koehler, husband and wife, fee owners and T and V Associates, a Minnesota general partnership, contract purchaser of the following described property situated in the County of Anoka, State of Minnesota, to wit:

The Southeast Quarter of the Northwest Quarter, the Southwest Quarter of the Northeast Quarter and the West 33.00 feet of the Southeast Quarter of the Northeast Quarter lying north of the centerline of Anoka County Road No. 163, all in Section 29, Township 33, Range 25, Anoka County, Minnesota.

Have caused the same to be surveyed and platted as COUNTRY VIEW ACRES, and do hereby donate and dedicate to the public for public use forever the streets, lane and parkway and the easements for drainage and utility purposes as shown on the plat.

In witness whereof said Orren Koehler and Clairejean Koehler have hereunto set our hands this 19th day of July, 1990.

In witness whereof said T and V Associates has caused these presents to be signed by its partners this 19th day of July, 1990.

Orren Koehler
Orren Koehler

Clairejean Koehler
Clairejean Koehler

T and V Associates

Vernon A. Scharber
Vernon A. Scharber, Partner

Thomas R. Moorhouse
Thomas R. Moorhouse, Partner

STATE OF Minnesota
COUNTY OF Anoka
The foregoing instrument was acknowledged before me this 19th day of July, 1990 by Orren Koehler and Clairejean Koehler, husband and wife.

Z. DARLENE HINZ
NOTARY PUBLIC - MINNESOTA
ANOKA COUNTY
My commission expires July 25, 1990

Z. Darlene Hinz
Notary Public, Anoka County, Minnesota
My commission expires July 25, 1990

STATE OF Minnesota
COUNTY OF Anoka
The foregoing instrument was acknowledged before me this 19th day of July, 1990 by Vernon A. Scharber, partner and Thomas R. Moorhouse, partner of T and V Associates, a Minnesota general partnership on behalf of the partnership.

Z. DARLENE HINZ
NOTARY PUBLIC - MINNESOTA
ANOKA COUNTY
My commission expires July 25, 1990

Z. Darlene Hinz
Notary Public, Anoka County, Minnesota
My commission expires July 25, 1990

I hereby certify that I have surveyed and platted the property described on this plat as COUNTRY VIEW ACRES, and this plat is a representation of the survey, that all distances are correctly shown on the plat in feet and hundredths of a foot, that all monuments have been correctly placed in the ground as shown, that the outside boundary lines are correctly designated on the plat and that there are no wet lands or public highways to be designated on said plat other than shown thereon.

Dennis V. Taylor
Dennis V. Taylor, Registered Land Surveyor
Minnesota License Number 15233

STATE OF MINNESOTA
COUNTY OF WRIGHT
The foregoing Surveyor's Certificate was acknowledged before me this 19th day of July, 1990 by Dennis V. Taylor, Registered Land Surveyor.

DAVID O. KERN
NOTARY PUBLIC - MINNESOTA
WRIGHT COUNTY
My commission expires 2-18-91

David O. Kern
Notary Public, Wright County, Minnesota
My commission expires 2-18-91

This plat of COUNTRY VIEW ACRES was accepted and approved by the township board of the Township of Burns at a regular meeting this 12th day of June, 1990. If applicable, the written comments and recommendations of the Commissioner of Transportation and the County Highway Engineer have been received by the township or the prescribed 30 day period has elapsed without receipt of such comments and recommendations, as provided by Minnesota Statutes, Section 505.03, Subd. 2.

Signed: Dennis W. Berg
Chairman

Attest: Cathy A. Wood
Clerk

The annexed plat of COUNTRY VIEW ACRES was approved and accepted by the Board of County Commissioners of the County of Anoka, State of Minnesota at a regular meeting this 24th day of July, 1990.

Signed: Dan E. Hunt
Chairman

Attest: John Jay McLaughlin
County Administrator

This plat was approved to form and execution this 30th day of July, 1990.

Anthony C. Palumbo
County Attorney, Anoka County, Minnesota

Recommended for approval this 23rd day of July, 1990.

Paul K. Lund
County Highway Engineer
Anoka County, Minnesota

Checked and approved this 23rd day of July, 1990.

Walter D. Orndahl
County Surveyor, Anoka County, Minnesota

"NO DELINQUENT TAXES
AND TRANSFER ENLARGED"
July 30th 1990
Charles R. Blum
Anoka County
By Doreen Schultz
Deputy

901984

I HEREBY CERTIFY THAT THE TAXES
PAYABLE IN THE YEAR 1990 ON THE
LANDS DESCRIBED WITHEIN ARE PAID

Doreen Schultz
Anoka County Treasurer
I Henry - Deputy

PLAT OF COUNTY RECORDER
STATE OF MINNESOTA COUNTY OF ANOKA
I hereby certify that the within plat
was filed in this office for record
on the JUL 30 AD. 1990
at 2:30 P.M. and was duly recorded
in Book 42 of Plats page 30
Ted Orndahl
By Doreen Schultz
Deputy

TAYLOR LAND SURVEYORS, INC.

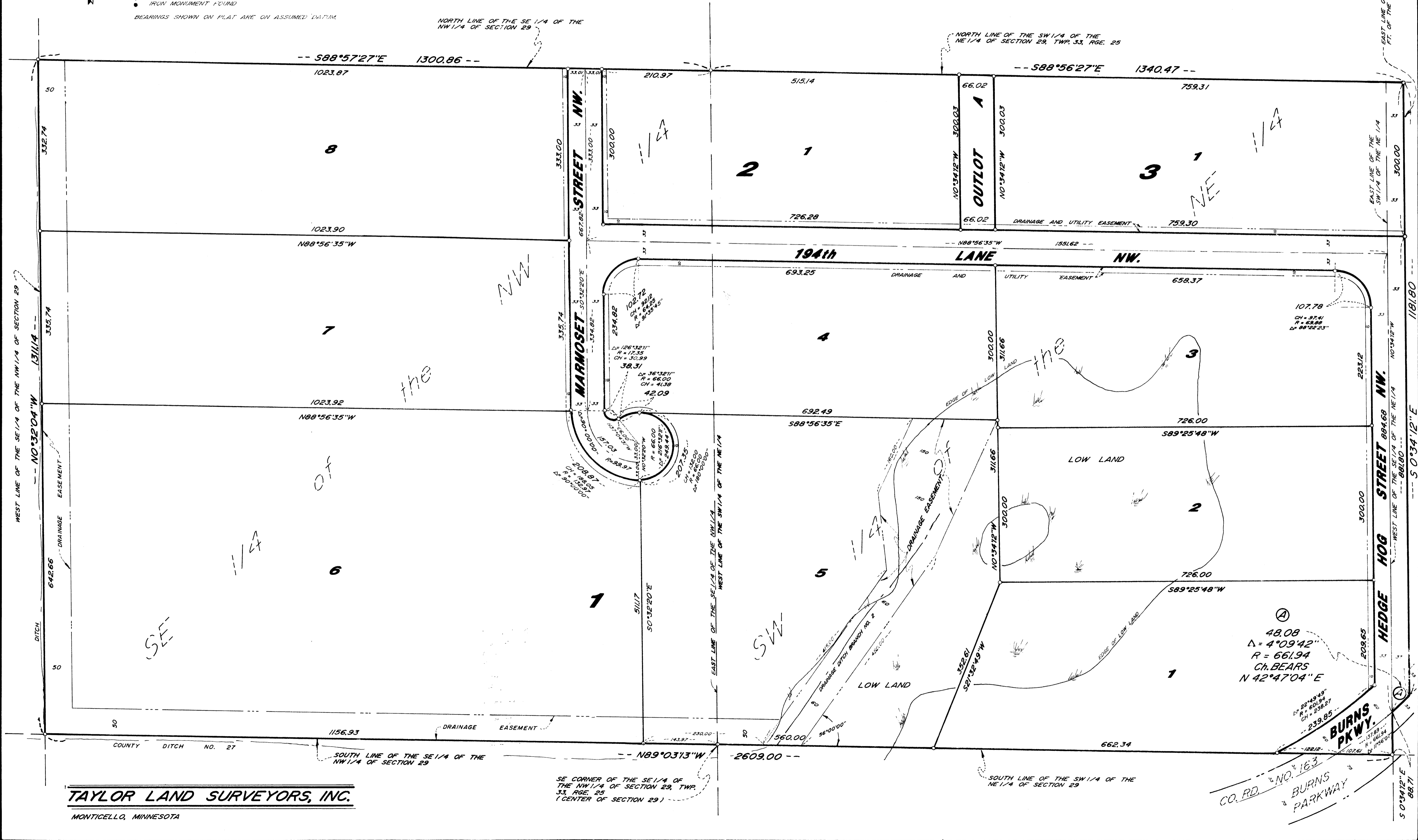
MONTICELLO, MINNESOTA

COUNTRY VIEW ACRES

BURNS TOWNSHIP
COUNTY OF ANOKA



DENOTES:
○ IRON MONUMENT SET R.L.S. NO. 15233
● IRON MONUMENT FOUND
BEARINGS SHOWN ON PLAT ARE ON ASSUMED DATUM



TAYLOR LAND SURVEYORS, INC.
MONTICELLO, MINNESOTA

SE CORNER OF THE SE 1/4 OF THE NW 1/4 OF SECTION 29, TWP. 33, RGE. 25 (CENTER OF SECTION 29)

BURNS PKWY.
CO. RD. NO. 163
BURNS PARKWAY