

# CRAIG 2ND ADDITION

BEARINGS SHOWN ARE ASSUMED  
O DENOTES IRON MONUMENT  
SCALE: 1 INCH EQUALS 100 FEET  
CITY OF BLAINE  
COUNTY OF ANOKA

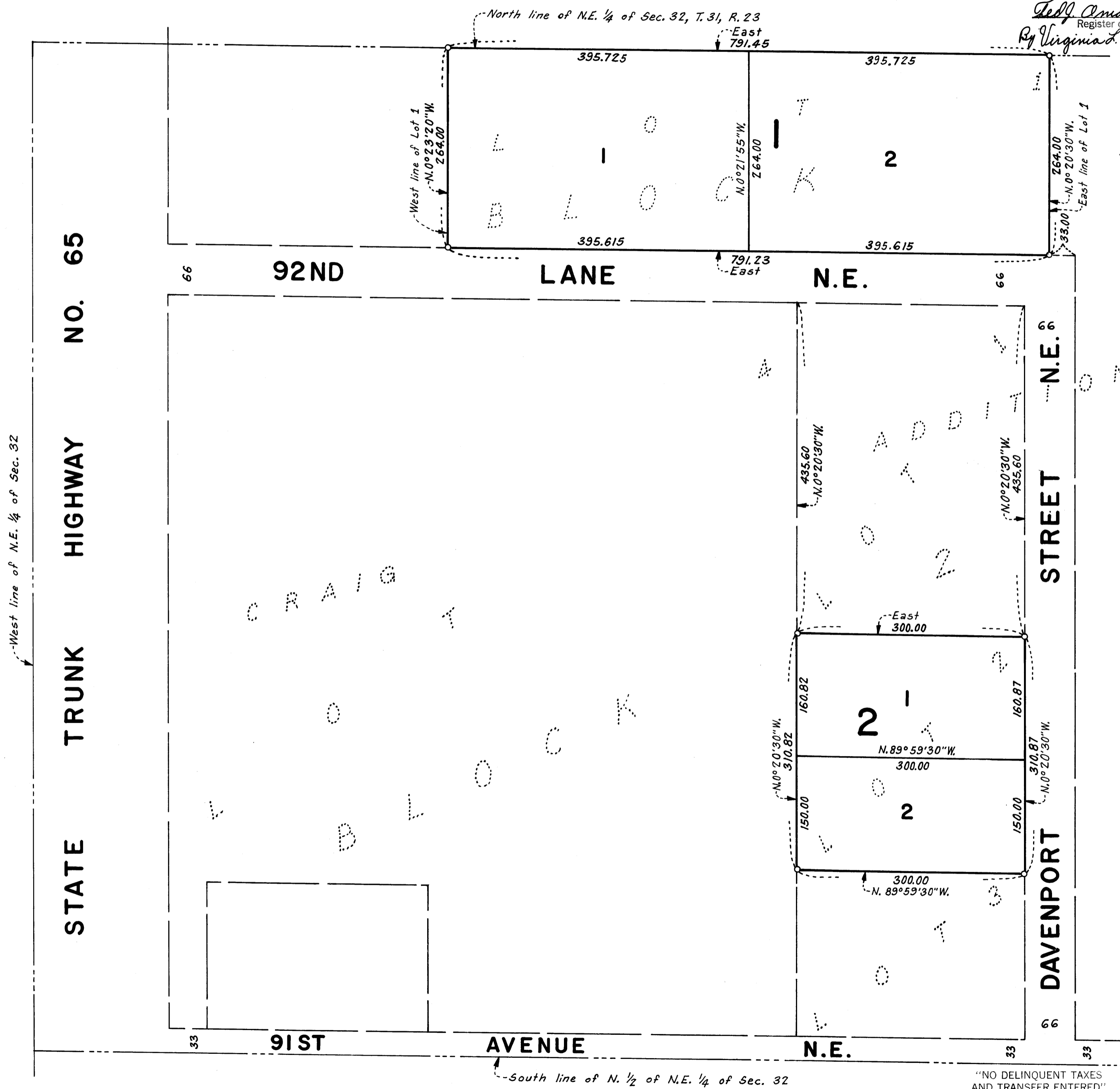
OCTOBER, 1975

EGAN, FIELD & NOWAK, INC.  
SURVEYORS

439609

OFFICE OF REGISTER OF DEEDS  
STATE OF MINNESOTA, COUNTY OF ANOKA  
I hereby certify that the within instrument was filed in this office for record on the JAN 16 1976 A.D., 19 1:35 o'clock P.M., and was duly recorded in book 194 Plate page 12 in

Jeff Amundell  
Register of Deeds  
By Virginia A. Anderson  
Deputy



West line of N.E. 1/4 of Sec. 32

South line of N. 1/2 of N.E. 1/4 of Sec. 32

"NO DELINQUENT TAXES AND TRANSFER ENTERED"

Jan 16 1976  
Charles R. Johnson  
Auditor, Anoka County

By Nancy C. Campbell  
Deputy

APR 29 7 59 JAN 1 6 76

50 C 1 -

Know all men by these presents that Jean M. Johnson, unmarried, owner and proprietor and Chas., Inc., a Minnesota corporation, first contract vendee, and Craig Investment Co., a partnership, purchaser under contract for deed of the following described property to wit: Lot 1, Block 1, CRAIG ADDITION, and Lot 2, Block 2, CRAIG ADDITION, except the South 150.00 feet thereof. Also that Warren D. Evans and Viola M. Evans, his wife, owners and proprietors, and Walsh County Bank, a North Dakota corporation, mortgagee, of the following described property to wit: The South 150.00 feet of Lot 2, Block 2, CRAIG ADDITION. Have caused the same to be surveyed and platted as CRAIG 2ND ADDITION.

In witness whereof said Jean M. Johnson, unmarried, has hereunto set her hand and seal this 22 day of November, 1975. In witness whereof said Chas., Inc. has caused these presents to be signed by its proper officer and its corporate seal to be hereunto affixed this 24th day of November, 1975. In witness whereof said Craig Investment Co. has caused these presents to be signed by its partners this 25th day of NOVEMBER, 1975. In witness whereof said Warren D. Evans and Viola M. Evans, his wife, have hereunto set their hands and seals this 30th day of OCTOBER, 1975. In witness whereof said Walsh County Bank has caused these presents to be signed by its proper officers and its corporate seal to be hereunto affixed this 30th day of OCTOBER, 1975.

Jean M. Johnson  
Jean M. Johnson

CRAIG INVESTMENT CO.  
by Frank Harris a partner  
by Ray H. Harris a partner  
by Marion Newman a partner  
by Meyer Salloway a partner

Warren D. Evans  
Warren D. Evans  
Viola M. Evans  
Viola M. Evans

CHAS., INC.  
Charles F. Settle president  
WALSH COUNTY BANK  
Daniel J. Lessard president  
G. H. Bliven vice president  
Harvey E. Momerak vice president

STATE OF MINNESOTA  
COUNTY OF HENNEPIN The foregoing instrument was acknowledged before me this 22nd day of NOVEMBER, 1975 by Jean M. Johnson, unmarried.  
Virginia A. Anderson  
Notary Public, Hennepin County, Minnesota. My commission expires NOVEMBER 7, 1981

STATE OF MINNESOTA  
COUNTY OF HENNEPIN The foregoing instrument was acknowledged before me this 24th day of NOVEMBER, 1975 by Charles F. Settle, president of Chas., Inc., a Minnesota corporation, on behalf of the corporation.  
Virginia A. Anderson  
Notary Public, Hennepin County, Minnesota. My commission expires NOVEMBER 7, 1981

STATE OF MINNESOTA  
COUNTY OF HENNEPIN The foregoing instrument was acknowledged before me this 25th day of NOVEMBER, 1975 by Frank Harris, a partner, Ray H. Harris, a partner, Marion Newman, a partner and Meyer Salloway, a partner of Craig Investment Co., a partnership, on behalf of the partnership.  
Virginia A. Anderson  
Notary Public, Hennepin County, Minnesota. My commission expires NOVEMBER 7, 1981

STATE OF NORTH DAKOTA  
COUNTY OF WALSH The foregoing instrument was acknowledged before me this 30th day of OCTOBER, 1975 by Warren D. Evans and Viola M. Evans, his wife.  
James L. Tibery  
Notary Public, Walsh County, North Dakota. My commission expires 1-28-79

STATE OF NORTH DAKOTA  
COUNTY OF WALSH The foregoing instrument was acknowledged before me this 30th day of OCTOBER, 1975 by Daniel J. Lessard, president, G. H. Bliven, vice president and Harvey E. Momerak, vice president of Walsh County Bank, a North Dakota corporation, on behalf of the corporation.  
James L. Tibery  
Notary Public, Walsh County, North Dakota. My commission expires 1-28-79

I hereby certify that I have surveyed and platted the property described on this plat as CRAIG 2ND ADDITION; that this plat is a correct representation of said survey; that all distances are correctly shown on the plat in feet and hundredths of a foot; that all monuments have been correctly placed in the ground as shown; that the outside boundary lines are correctly designated on the plat, and that there are no wet lands or public highways to be designated on the plat other than as shown thereon.  
Vernon A. Nickols  
Vernon A. Nickols, Land Surveyor. Minnesota Registration No. 9053

STATE OF MINNESOTA  
COUNTY OF HENNEPIN The foregoing instrument was acknowledged before me this 24th day of October, 1975 by Vernon A. Nickols, Land Surveyor.  
Chris Kuntz  
CHRIS KUNTZ, Notary Public, Hennepin County, Minnesota. My commission expires March 4, 1982.

This plat of CRAIG 2ND ADDITION was approved and accepted by the City Council of Blaine, Minnesota, at a regular meeting thereof held this 18th day of September, 1975.

Frances Bogert mayor  
Gilbert B. Remick manager

Checked and approved by me this 16th day of January, 1976.  
Roland W. Anderson  
Roland W. Anderson, Anoka County Surveyor