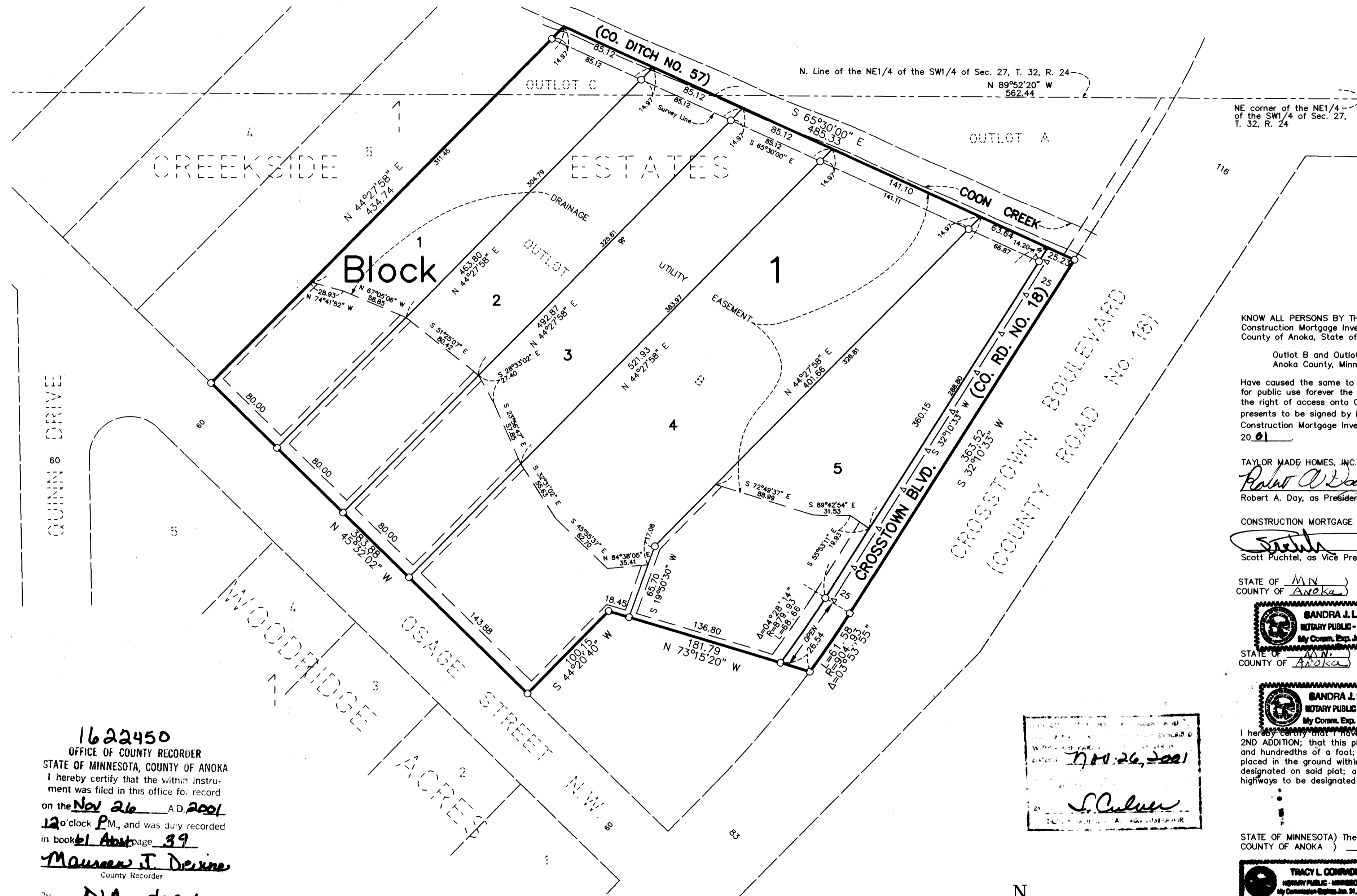


CREEKSIDE ESTATES 2ND ADDITION

BK 61 Abs+
Pg 39

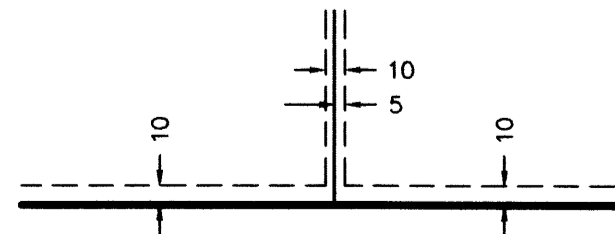
City of Andover
County of Anoka
Sec. 27, T. 32 R. 24



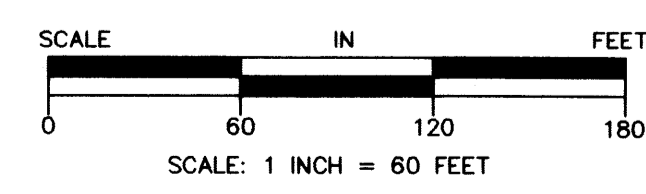
1622450
OFFICE OF COUNTY RECORDER
STATE OF MINNESOTA, COUNTY OF ANOKA
I hereby certify that the within instrument was filed in this office for record on the Nov 26 A.D. 2001 at 12 o'clock P.M., and was duly recorded in book 61 Abs, page 39.
Maurice J. Devine
County Recorder
by DLA deputy

○ DENOTES MONUMENTS REQUIRED BY MINNESOTA STATUTE TO BE SET WITHIN ONE YEAR OF THE RECORDING DATE OF THIS PLAT AND SHALL BE EVIDENCED BY A 1/2 INCH BY 14 INCH IRON PIPE MARKED BY RLS 12251.
—△—△— DENOTES "RIGHT OF ACCESS DEDICATED TO ANOKA COUNTY"
NOTE: FOR THE PURPOSES OF THIS PLAT, THE NORTH LINE OF THE NE1/4 OF THE SW1/4 OF SEC. 27, T. 32, R. 24 IS ASSUMED TO BEAR S.89°52'20" E.

DRAINAGE AND UTILITY EASEMENTS SHOWN THUS:



BEING 10 FEET IN WIDTH AND ADJOINING STREET LINES AND 5 FEET IN WIDTH AND ADJOINING SIDE LINES UNLESS SHOWN OTHERWISE ON THE PLAT.



KNOW ALL PERSONS BY THESE PRESENTS: That Taylor Made Homes, Inc., a Minnesota corporation, owner and proprietor and Construction Mortgage Investors Co., a Minnesota corporation, mortgagee of the following described property situated in the County of Anoka, State of Minnesota, to-wit:

Outlet B and Outlet C, CREEKSIDE ESTATES, according to the recorded plat thereof, Anoka County, Minnesota.

Have caused the same to be surveyed and platted as CREEKSIDE ESTATES 2ND ADDITION and do hereby donate and dedicate to the public for public use forever the boulevard and drainage and utility easements as shown on the plat. Also dedicating to the County of Anoka the right of access onto County Road No. 18 as shown on the plat. In witness whereof said Taylor Made Homes, Inc., has caused these presents to be signed by its proper officer this 8th day of November, 2001. In witness whereof said Construction Mortgage Investors Co. has caused these presents to be signed by its proper officer this 8th day of November, 2001.

TAYLOR MADE HOMES, INC.
Robert A. Day
Robert A. Day, as President

CONSTRUCTION MORTGAGE INVESTORS CO.
Scott Puchtel
Scott Puchtel, as Vice President

STATE OF MINN. The foregoing instrument was acknowledged before me this 8th day of November, 2001, COUNTY OF ANOKA, by Robert A. Day, as President of Taylor Made Homes, Inc., a Minnesota corporation, on behalf of the corporation.

BANDRA J. LATHROP
NOTARY PUBLIC - MINNESOTA
My Comm. Exp. Jan. 31, 2005

Sandra J. Rathrop
Notary Public, Anoka County, Minnesota
My Commission expires January 31, 2005

STATE OF MINN. The foregoing instrument was acknowledged before me this 8th day of November, 2001, COUNTY OF ANOKA, by Scott Puchtel, as Vice President of Construction Mortgage Investors Co., a Minnesota corporation, on behalf of the corporation.

BANDRA J. LATHROP
NOTARY PUBLIC - MINNESOTA
My Comm. Exp. Jan. 31, 2005

Sandra J. Rathrop
Notary Public, Anoka County, Minnesota
My Commission expires January 31, 2005

I hereby certify that I have surveyed and platted the land described in the dedication on this plat as CREEKSIDE ESTATES 2ND ADDITION; that this plat is a correct representation of said survey; that all distances are correctly shown on said plat in feet and hundredths of a foot; that all monuments have been correctly placed in the ground as shown, or shall be correctly placed in the ground within one year after the recording date of this plat; that the outside boundaries are correctly designated on said plat; and that there are no wetlands, in accordance with M.S. 505.02 Subdivision 1, or public highways to be designated on said plat other than as shown thereon.

Jeffrey N. Caine
Jeffrey N. Caine, Registered Land Surveyor
Minnesota License No. 12251

STATE OF MINNESOTA) The Surveyors Certificate was acknowledged before me a Notary Public, this 6th day of COUNTY OF ANOKA) November, 2001, by Jeffrey N. Caine, Land Surveyor.

TRACY L. CONNADI
NOTARY PUBLIC - MINNESOTA
My Commission Expires Jan. 31, 2005

Tracy L. Connadi
Notary Public, Anoka County, Minnesota
My Commission expires 1-31-05

We hereby certify that the City Council of the City of Andover, Anoka County, Minnesota, duly accepted and approved the plat of CREEKSIDE ESTATES 2ND ADDITION at a regular meeting held this 4th day of SEPTEMBER, 2001. If applicable, the written comments and recommendations of the Commissioner of Transportation and the County Highway Engineer have been received by the city or the prescribed 30 day period has elapsed without receipt of such comments and recommendations, as provided by Minn. Statutes, Section 505.03, Subd. 2.

By Victor Hill Mayor By Victor Hill Clerk
Checked and approved this 26th day of NOVEMBER, 2001.

By Jeffrey D. Rhein
Anoka County Surveyor

Receipt No. 200120937 #24500

CAINE & ASSOCIATES
LAND SURVEYORS, INC.
A Subsidiary of RLK-Kuusisto, Ltd.