

CRESCENT PONDS FIFTH ADDITION

KNOW ALL MEN BY THESE PRESENTS: That Centex Homes, a Nevada general partnership, owner of the following described property situated in the County of Anoka, State of Minnesota, to wit:

Lots 16 through 34, inclusive, Block 2, and Lots 1 through 17, inclusive, Block 3, all in CRESCENT PONDS SECOND ADDITION, according to the recorded plat thereof, Anoka County, Minnesota.

Has caused the same to be surveyed and platted as CRESCENT PONDS FIFTH ADDITION and does hereby donate and dedicate to the public for public use forever the drainage and utility easements as shown on this plat.

In witness whereof said Centex Homes, a Nevada general partnership, has caused these presents to be signed by its proper officer this 16th day of November, 2009.

CENTEX HOMES
By: Centex Real Estate Corporation
Its Managing General Partner
M. W. Warr
as Division President

STATE OF MINNESOTA
COUNTY OF Hennepin
The foregoing instrument was acknowledged before me this 16th day of November, 2009 by Marv McDaris, Minnesota Division President of Centex Real Estate Corporation, a Nevada corporation, the managing general partner of Centex Homes, a Nevada general partnership, on behalf of said partnership.

Jason C. Wedel
Jason C. Wedel
Notary Public, Scott County, Minnesota
My Commission Expires January 31, 2013

I, Peter J. Hawkinson, a duly Licensed Land Surveyor under the laws of the State of Minnesota, do hereby certify that I have surveyed or directly supervised the survey of the property described on this plat; prepared this plat or directly supervised the preparation of this plat of CRESCENT PONDS FIFTH ADDITION; that this plat is a correct representation of the boundary survey; that all mathematical data and labels are correctly designated on this plat; that all monuments depicted on this plat have been, or will be correctly set within one year as indicated on this plat; that all water boundaries and wet lands, as defined in Minnesota Statutes, Section 505.01, Subd. 3, as of the date of this certificate are shown and labeled on this plat; and all public ways are shown and labeled on this plat.

Peter J. Hawkinson
Peter J. Hawkinson, Professional Land Surveyor
Minnesota License Number 42299

STATE OF MINNESOTA
COUNTY OF Dakota
The foregoing Surveyor's Certificate was acknowledged before me this 4 day of NOVEMBER, 2009 by Peter J. Hawkinson, a Professional Land Surveyor, Minnesota License No. 42299.

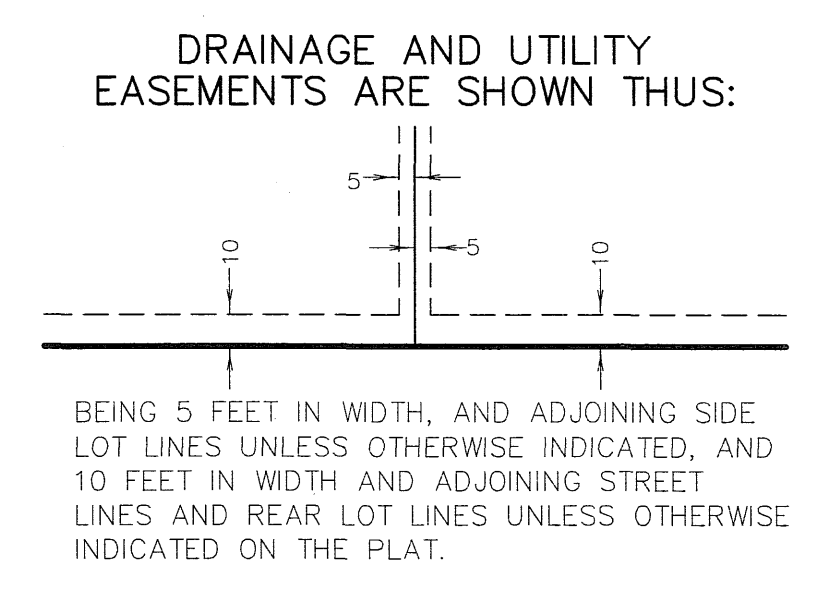
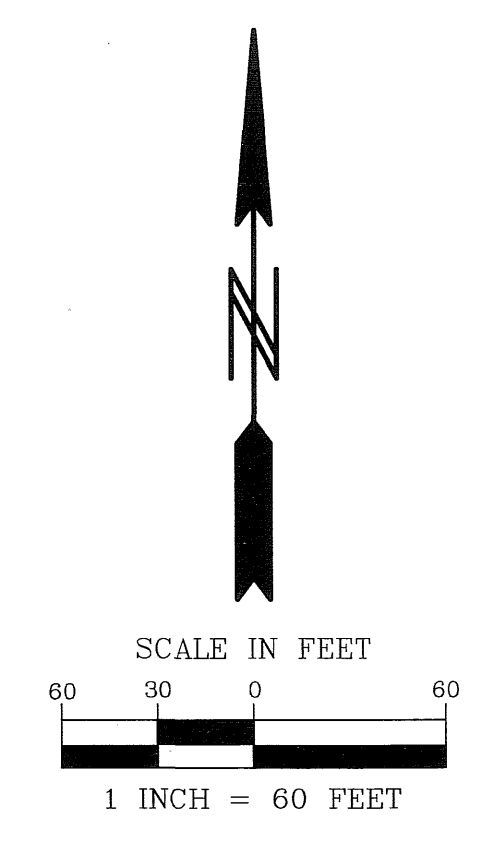
Nicholas J. Kalsrud
Nicholas J. Kalsrud
Notary Public, Dakota County, Minnesota
My Commission Expires 1-31-2010

BLAINE, MINNESOTA
This plat of CRESCENT PONDS FIFTH ADDITION was approved by the City Council of the City of Blaine, Minnesota, at a regular meeting thereof held this 13th day of October, 2009, and said plat is in compliance with the provisions of Minnesota Statutes 505.03, SUBD 2.

By: *Tom Payne*, Mayor
By: *John M. Cross*, Clerk
By: *Larry D. Holium* by *Frank H. Bous*
Larry D. Holium, Anoka County Surveyor

Checked and approved this 28th day of December, 2009.

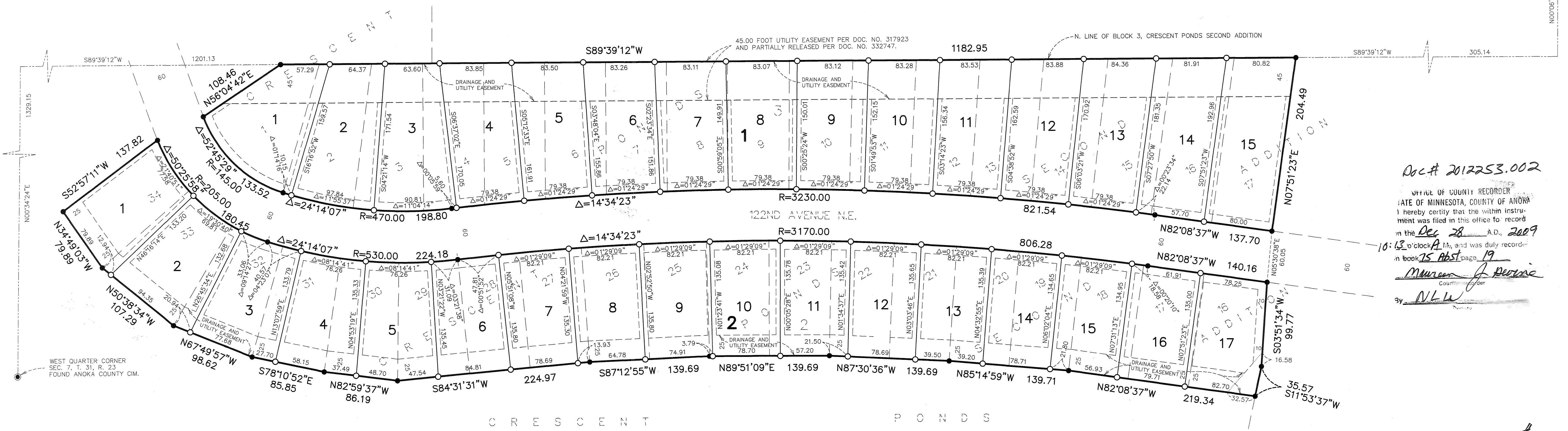
I HEREBY CERTIFY THAT THE CURRENT AND DELINQUENT TAXES ON THE LANDS DESCRIBED WITHIN ARE PAID AND THE TRANSFER IS ENTERED
12/28/09
MAUREEN J. DEWBRE
PROPERTY TAX ADMINISTRATOR
BY: *Maureen J. Dewbre*
DEPUTY PROPERTY TAX ADMINISTRATOR



BEARINGS ARE BASED ON THE NORTH LINE OF BLOCK 3, CRESCENT PONDS SECOND ADDITION, WHICH IS ASSUMED TO HAVE A BEARING OF SOUTH 89°39'12" WEST.

- DENOTES 1/2 INCH BY 14 INCH IRON MONUMENT SET AND MARKED BY LICENSE NO. 42299.
- DENOTES FOUND IRON MONUMENT.
- DENOTES FOUND ANOKA COUNTY CAST IRON MONUMENT.

NORTH QUARTER CORNER
SEC. 7, T. 31, R. 23
FOUND ANOKA COUNTY CIM.



Doc# 2012253.002
OFFICE OF COUNTY RECORDER
STATE OF MINNESOTA, COUNTY OF ANOKA
I hereby certify that the within instrument was filed in this office for record on the Dec 28 A.D., 2009
at 10:13 o'clock A.M., and was duly recorded in book 75 Abst page 19
Maureen J. Dewbre
County Recorder
By: *N.L.W.*