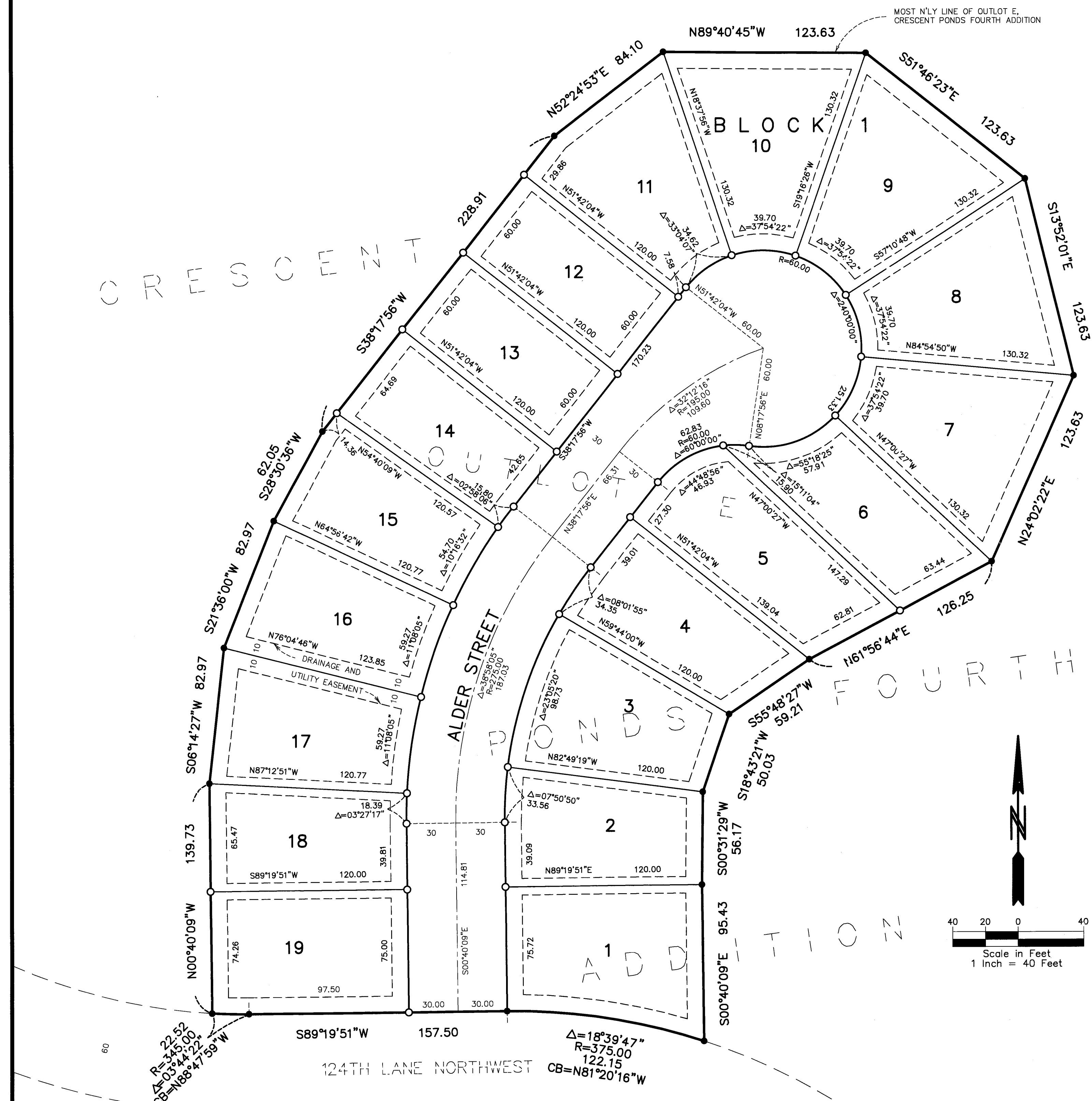


CRESCENT PONDS NINTH ADDITION

BOOK 80 of Abst P 89

CITY OF COON RAPIDS
COUNTY OF ANOKA
SEC. 12, T. 31, R. 24



KNOW ALL PERSONS BY THESE PRESENTS: That Signature Ventures, LLC, a Minnesota Limited Liability Company, owner of the following described property:

Outlot E, CRESCENT PONDS FOURTH ADDITION, according to the recorded plat thereof, Anoka County, Minnesota.

Has caused the same to be surveyed and platted as CRESCENT PONDS NINTH ADDITION and does hereby dedicate to the public for public use the public way and the drainage and utility easements as created by this plat.

In witness whereof said Signature Ventures, LLC, a Minnesota Limited Liability Company, has caused these presents to be signed by its proper officer this 29th day of March, 2017.

Signature Ventures, LLC
Todd J. Baumgartner
 Todd J. Baumgartner as Chief Manager

STATE OF MINNESOTA
COUNTY OF Hennepin

This instrument was acknowledged before me on March 29, 2017 by Todd J. Baumgartner as Chief Manager of Signature Ventures, LLC, a Minnesota Limited Liability Company.

Todd J. Baumgartner
 Notary Public, Hennepin Co.
 My Commission Expires 7/31/2020

I Peter J. Hawkinson do hereby certify that this plat was prepared by me or under my direct supervision; that I am a duly Licensed Land Surveyor in the State of Minnesota; that this plat is a correct representation of the boundary survey; that all mathematical data and labels are correctly designated on this plat; that all monuments depicted on this plat have been, or will be correctly set within one year; that all water boundaries and wet lands, as defined in Minnesota Statutes, Section 505.01, Subd. 3, as of the date of this certificate are shown and labeled on this plat; and all public ways are shown and labeled on this plat.

Dated this 28th day of February, 2017.

Peter J. Hawkinson
 Peter J. Hawkinson, Licensed Land Surveyor
 Minnesota License No. 42299

STATE OF MINNESOTA
COUNTY OF Dakota

This instrument was acknowledged before me on this 21st day of February, 2017 by Peter J. Hawkinson.

Nicholas J. Kalasud
 Notary Public, Dakota
 My Commission Expires 1-31-2020

COON RAPIDS PLANNING COMMISSION

Be it known that at a meeting held on this 18 day of April, 2018, the Planning Commission of the City of Coon Rapids, Minnesota, did hereby review and approve this plat of CRESCENT PONDS NINTH ADDITION.

By: *Wayne Schwart*
 Chairperson

CITY COUNCIL, CITY OF COON RAPIDS, MINNESOTA

This plat of CRESCENT PONDS NINTH ADDITION was approved and accepted by the City Council of the City of COON RAPIDS, Minnesota at a regular meeting thereof held this 7 day of February, 2017, and said plat is in compliance with the provisions of Minnesota Statute Section 505.03, Subd. 2.

By: *Janis Koel*
 Mayor

By: *Joan Janyman*
 Clerk

COUNTY SURVEYOR

I hereby certify that in accordance with Minnesota Statutes, Section 505.021, Subd. 11, this plat has been reviewed and approved this 8th day of June, 2017.

By: *Larry D. Holm* by *Charles F. Rutzgen*, Deputy
 Larry D. Holm
 Anoka County Surveyor

COUNTY AUDITOR/TREASURER

Pursuant to Minnesota Statutes, Section 505.021, Subd. 9, taxes payable in the year 2017 on the land hereinbefore described have been paid. Also, pursuant to Minnesota Statutes, Section 272.12 there are no delinquent taxes and transfer entered this 8 day of June, 2017.

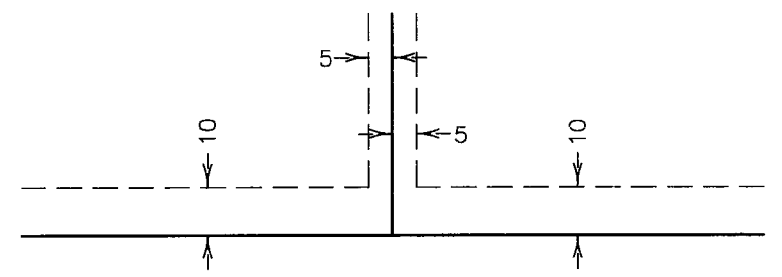
Property Tax Administrator
 By: *[Signature]*, Deputy

COUNTY RECORDER/REGISTRAR OF TITLES County of Anoka, State of Minnesota

I hereby certify that this plat of CRESCENT PONDS NINTH ADDITION was filed in the office of the County Recorder/Registrar of Titles for public record on this 8 day of June, 2017, at 11:51 o'clock A.M. and was duly recorded in Book 80 of Abst Page 9 as Document Number 2172466.001

Jonell M Sawyer
 County Recorder/Registrar of Titles
 By: *[Signature]*, Deputy

DRAINAGE AND UTILITY EASEMENTS ARE SHOWN THUS:



being 5 feet in width, and adjoining lot lines unless otherwise indicated, and 10 feet in width and adjoining street lines and rear lot lines unless otherwise shown on this plat.

ORIENTATION OF THIS BEARING SYSTEM IS BASED ON THE MOST NORTHERLY LINE OF OUTLOT E, CRESCENT PONDS FOURTH ADDITION, WHICH IS ASSUMED TO HAVE A BEARING OF NORTH 89°40'45" WEST.

- DENOTES FOUND IRON MONUMENT
- DENOTES 1/2 INCH X 14 INCH IRON MONUMENT SET AND MARKED BY LICENSE NO. 42299 WHICH WILL BE SET WITHIN 1 YEAR OF RECORDING THIS PLAT.

\$56