

CSM LEXINGTON FIFTH ADDITION

KNOW ALL PERSONS BY THESE PRESENTS: That CSM Equities, LLC, a Delaware limited liability company, owner of the following described property:

Outlot A, CSM LEXINGTON THIRD ADDITION, Anoka County, Minnesota

(Torrens)

AND

Outlot B, CSM LEXINGTON FOURTH ADDITION, Anoka County, Minnesota

(Abstract)

Has caused the same to be surveyed and platted as CSM LEXINGTON FIFTH ADDITION and does hereby dedicate to the public for public use the drainage and utility easements as shown on this plat.

In witness whereof said CSM Equities, LLC, a Delaware limited liability company, has caused these presents to be signed by its proper officer this 15th day of April, 2025.

Signed: CSM Equities, LLC

By: [Signature] (Signature)
Bradley Kittleson, Manager
(Printed Name)

STATE OF MINNESOTA

COUNTY OF HENNEPIN

This instrument was acknowledged before me this 15th day of April, 2025 by Bradley Kittleson, Manager of CSM Equities, LLC, a Delaware limited liability company, on behalf of the company.

[Signature]
(Signature)
Joel L. Rieth
(Printed Name)

Notary Public, Hennepin County, Minnesota

My Commission Expires January 31, 2030

I Daniel Ekrem do hereby certify that this plat was prepared by me or under my direct supervision; that I am a duly Licensed Land Surveyor in the State of Minnesota; that this plat is a correct representation of the boundary survey; that all mathematical data and labels are correctly designated on this plat; that all monuments depicted on this plat have been, or will be correctly set within one year; that all water boundaries and wet lands, as defined in Minnesota Statutes, Section 505.01, Subd. 3, as of the date of this certificate are shown and labeled on this plat; and all public ways are shown and labeled on this plat.

Dated this 14th day of March, 2025.

[Signature]
Daniel Ekrem, Licensed Land Surveyor
Minnesota License No. 57366

STATE OF Minnesota

COUNTY OF Hennepin

This instrument was acknowledged before me this 14th day of March, 2025 by Daniel Ekrem.

[Signature]
(Signature)
Joshua Taylor
(Printed Name)

Notary Public, Dakota County, Minnesota

My Commission Expires January 31, 2029

City Council, City of Blaine, Minnesota

This plat of CSM LEXINGTON FIFTH ADDITION was approved and accepted by the City Council of the City of Blaine, Minnesota at a regular meeting thereof held this 22nd day of January, 2025, and said plat is in compliance with the provisions of Minnesota Statutes, Section 505.03, Subd. 2.

City Council, City of Blaine, Minnesota

By: [Signature], Mayor By: [Signature], Clerk

County Surveyor

I hereby certify that in accordance with Minnesota Statutes, Section 505.021, Subd. 11, this plat has been reviewed and approved this 22nd day of April, 2025.

By: [Signature]
David Ziegemeier
Anoka County Surveyor

County Auditor/Treasurer

Pursuant to Minnesota Statutes, Section 505.021, Subd. 9, taxes payable in the year 2025, on the land hereinbefore described have been paid. Also, pursuant to Minnesota Statutes, Section 272.12, there are no delinquent taxes and transfer entered this 6th day of May, 2025.

Pamela J. LeBlanc
Property Tax Administrator

By: [Signature], Deputy

County Recorder/Registrar of Titles
County of Anoka, State of Minnesota

I hereby certify that this plat of CSM LEXINGTON FIFTH ADDITION was filed in the office of the County Recorder/Registrar of Titles for public record on this 6th day of May, 2025, at 2:21 o'clock P.M. and was duly recorded as Document Number 624769.001.

Pamela J. LeBlanc
County Recorder/Registrar of Titles

By: [Signature], Deputy

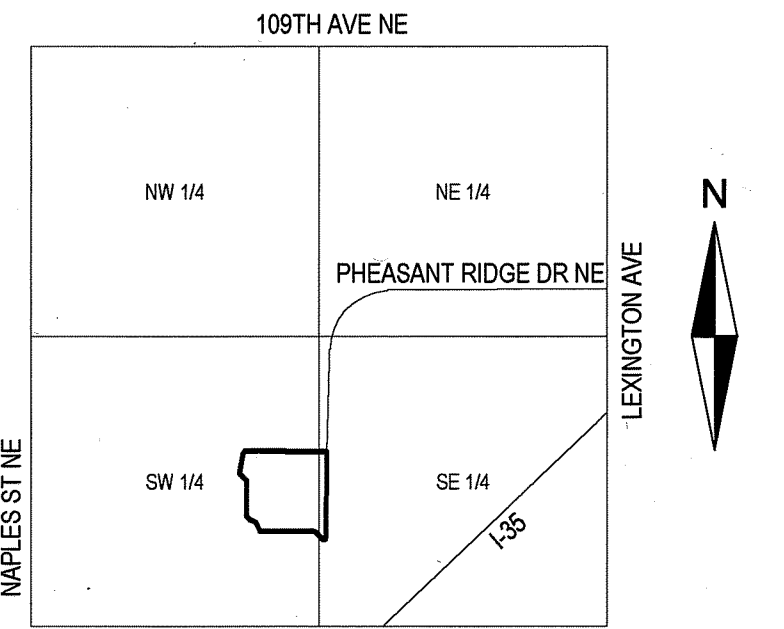
County Recorder/Registrar of Titles
County of Anoka, State of Minnesota

I hereby certify that this plat of CSM LEXINGTON FIFTH ADDITION was filed in the office of the County Recorder/Registrar of Titles for public record on this 6th day of May, 2025, at 2:21 o'clock P.M. and was duly recorded as Document Number 2438074.001.

Pamela J. LeBlanc
County Recorder/Registrar of Titles

By: [Signature], Deputy

CSM LEXINGTON FIFTH ADDITION



VICINITY MAP
S. 23, T. 31, R. 23
NOT TO SCALE

THE NORTH LINE OF OUTLOT B, CSM LEXINGTON FOURTH ADDITION HAS AN ASSUMED BEARING OF N89°06'57"W.

LEGEND

- Denotes 1/2 inch by 18 inch iron monument set marked by license no. 57366, unless otherwise shown.
- Denotes monument found 1/2 inch iron pipe marked by license no. 18425, unless otherwise shown.
- ⊙ Denotes found Anoka County Cast Iron Monument

