

CSM LEXINGTON FOURTH ADDITION

CITY OF BLAINE
COUNTY OF ANOKA
SEC 23, T. 31, R. 23

Book 79 Abstract Page 9

KNOW ALL PERSONS BY THESE PRESENTS: That CSM Equities, L.L.C., a Delaware limited liability company, owner of the following described property:

Outlot B, CSM LEXINGTON THIRD ADDITION, Anoka County, Minnesota.

AND

Outlot E, CSM LEXINGTON SECOND ADDITION, Anoka County, Minnesota.

Has caused the same to be surveyed and platted as CSM LEXINGTON FOURTH ADDITION and does hereby dedicate to the public for public use the public way and the drainage and utility easements as shown on this plat.

In witness whereof said CSM Equities, L.L.C., a Delaware limited liability company, has caused these presents to be signed by its proper officer this 23rd day of May, 2016.

Signed: CSM Equities, L.L.C.

By: [Signature] Manager
Bradley KITTLESON

STATE OF MINNESOTA
COUNTY OF Hennepin

This instrument was acknowledged before me on 23rd day of May, 2016 by Bradley KITTLESON, Manager of CSM Equities, L.L.C., a Delaware limited liability company.

[Signature]
Jean M. Crosby

Notary Public, Anoka County, Minnesota
My Commission Expires January 31, 2020

I Dennis B. Olmstead do hereby certify that this plat was prepared by me or under my direct supervision; that I am a duly Licensed Land Surveyor in the State of Minnesota; that this plat is a correct representation of the boundary survey; that all mathematical data and labels are correctly designated on this plat; that all monuments depicted on this plat have been, or will be correctly set within one year; that all water boundaries and wet lands, as defined in Minnesota Statutes, Section 505.01, Subd. 3, as of the date of this certificate are shown and labeled on this plat; and all public ways are shown and labeled on this plat.

Dated this 25th day of May, 2016.

[Signature]
Dennis B. Olmstead, Licensed Land Surveyor
Minnesota License No. 18425

STATE OF Minnesota
COUNTY OF Hennepin

This instrument was acknowledged before me this 20th day of May, 2016 by Dennis B. Olmstead.

[Signature]
Daniel P. Ekrem

Notary Public, Dakota County, Minnesota
My Commission Expires 1-31-19

City Council, City of Blaine, Minnesota

This plat of CSM LEXINGTON FOURTH ADDITION was approved and accepted by the City Council of the City of Blaine, Minnesota at a regular meeting thereof held this 5th day of May, 2016, and said plat is in compliance with the provisions of Minnesota Statutes, Section 505.03, Subd. 2.

City Council, City of Blaine, Minnesota

By: [Signature] Tom Ryan, Mayor By: [Signature] Cathy Sorenson, City Clerk

County Surveyor

I hereby certify that in accordance with Minnesota Statutes, Section 505.021, Subd. 11, this plat has been reviewed and approved this 31st day of May, 2016.

By: Larry D. Hoium by Charles F. Ketzner, Deputy
Larry D. Hoium
Anoka County Surveyor

County Auditor/Treasurer

Pursuant to Minnesota Statutes, Section 505.021, Subd. 9, taxes payable in the year 2016 on the land hereinbefore described have been paid. Also, pursuant to Minnesota Statutes, Section 272.12, there are no delinquent taxes and transfer entered this 21st day of May, 2016.

[Signature]
Property Tax Administrator

By: [Signature], Deputy

County Recorder/Registrar of Titles
County of Anoka, State of Minnesota

I hereby certify that this plat of CSM LEXINGTON FOURTH ADDITION was filed in the office of the County Recorder/Registrar of Titles for public record on this 31st day of May, 2016, at 11:35 o'clock P.M. and was duly recorded in Book 79 Abstract Page 9, as Document Number 2139408.002.

[Signature]
County Recorder/Registrar of Titles

By: [Signature], Deputy

County Recorder/Registrar of Titles
County of Anoka, State of Minnesota

I hereby certify that this plat of CSM LEXINGTON FOURTH ADDITION was filed in the office of the County Recorder/Registrar of Titles for public record on this 31st day of May, 2016, at 11:34 o'clock A.M. and was duly recorded in Book 79 Abstract Page 9, as Document Number 539094.003.

[Signature]
County Recorder/Registrar of Titles

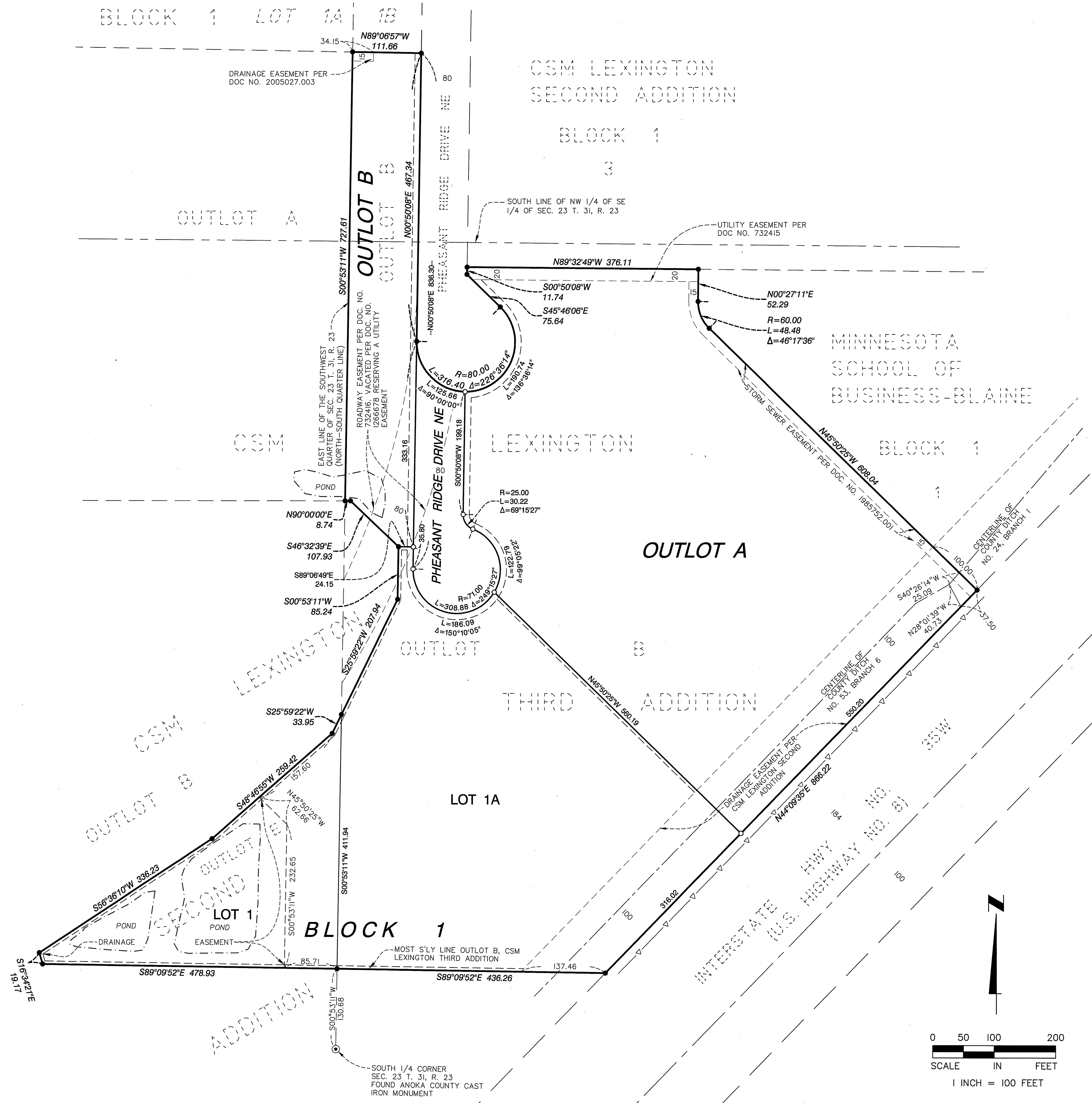
By: [Signature], Deputy

Abstract \$56⁰⁰ Journals \$56⁰⁰

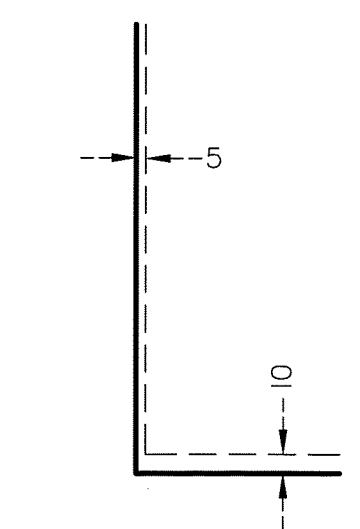


CSM LEXINGTON FOURTH ADDITION

CITY OF BLAINE
COUNTY OF ANOKA
SEC 23, T. 31, R. 23
Book 79 Abstract Page 9



DRAINAGE AND UTILITY EASEMENTS ARE SHOWN THUS:



Being 5 feet in width and adjoining lot lines and 10 feet in width and adjoining street lines unless otherwise shown on this plat.

FOR THE PURPOSES OF THIS PLAT, THE MOST SOUTHERLY LINE OF OUTLOT B, CSM LEXINGTON THIRD ADDITION, ANOKA COUNTY, MINNESOTA IS ASSUMED TO HAVE A BEARING OF S89°09'52"E.

- ⊙ Denotes Anoka County found cast iron monument
- Denotes monument found 1/2 inch iron pipe found marked by License No. 18425
- Denotes 1/2 inch x 18 inch iron monument set marked by License No. 18425 unless otherwise shown
- △— Denotes Controlled Access dedicated to the State of Minnesota per Doc. No. 269947
- - - - - Denotes Edge of Pond

