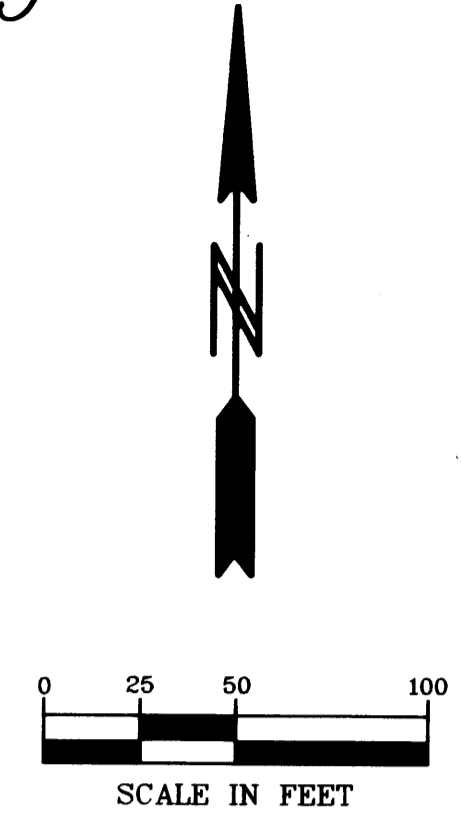
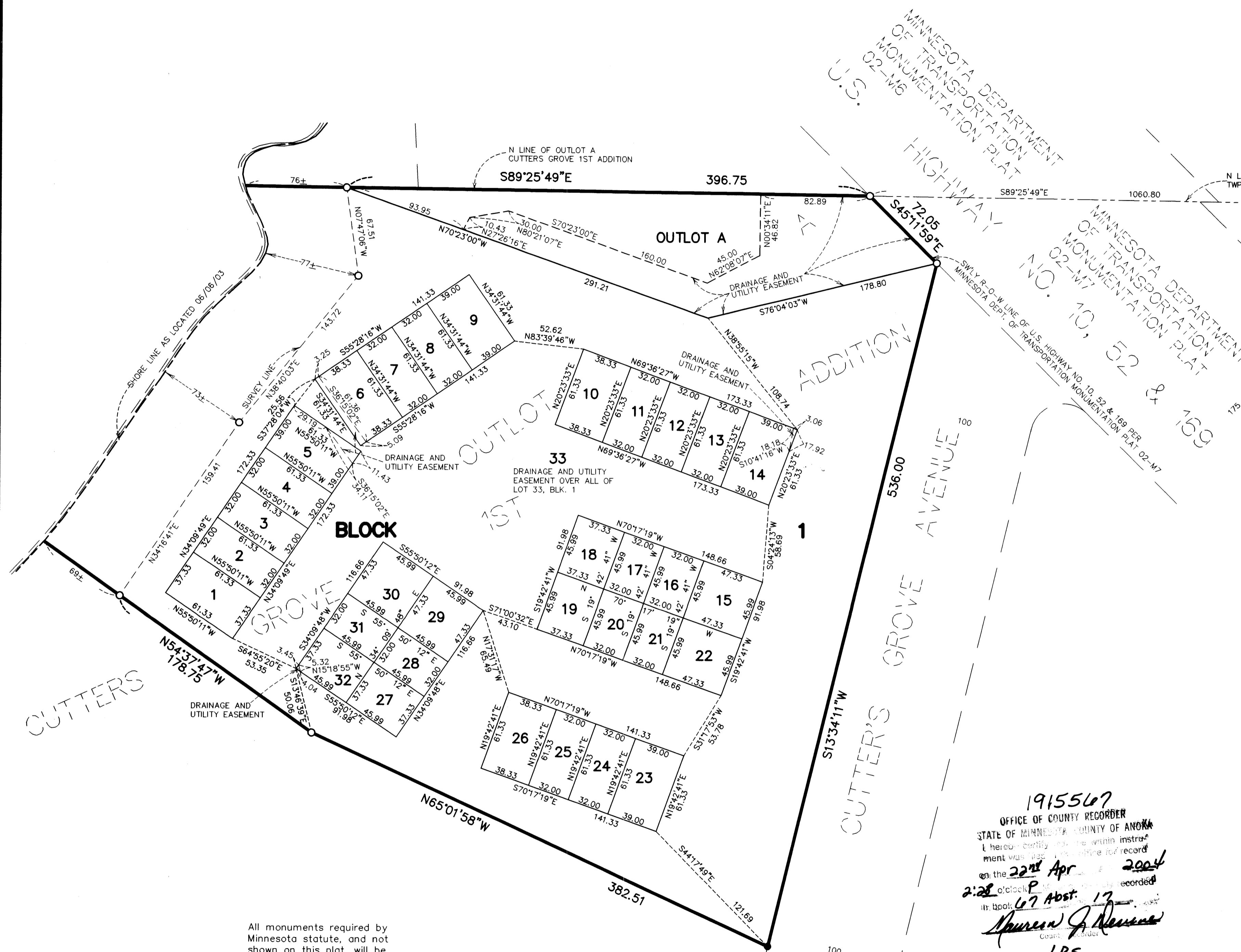


CUTTERS GROVE 3RD ADDITION



KNOW ALL PERSONS BY THESE PRESENTS: That GM Land Company, Inc., a Minnesota corporation, fee owner of the following described property situated in the County of Anoka, State of Minnesota, to wit: Outlot A, CUTTERS GROVE 1ST ADDITION, according to the recorded plat thereof, Anoka County, Minnesota. Has caused the same to be surveyed and platted as CUTTERS GROVE 3RD ADDITION and does hereby donate and dedicate to the public for public use forever the easements as shown on this plat for drainage and utility purposes only.

IN WITNESS WHEREOF said GM Land Company, Inc., a Minnesota corporation, has caused these presents to be signed by its proper officer this 9 day of April, 2004.

SIGNED: GM Land Company, Inc.
By: Gene Skelleud its Pres.

STATE OF MINNESOTA
COUNTY OF Dak

The foregoing instrument was acknowledged before me this 9 day of April, 2004, by Gene Skelleud as Pres. of GM Land Company, Inc., a Minnesota corporation, on behalf of the corporation.

ANN STENFORD
NOTARY PUBLIC - MINNESOTA
My Commission Expires Jan 31, 2005

Notary Public Dakota County, Minnesota
My Commission Expires Jan 31, 2005

I hereby certify that I have surveyed and platted the property described on this plat as CUTTERS GROVE 3RD ADDITION; that this plat is a correct representation of said survey; that all distances are correctly shown on the plat in feet and hundredths of a foot; that all monuments have been correctly placed in the ground as shown or will be correctly placed, as required by the local governmental unit; that the outside boundary lines are correctly designated on the plat; and that there are no wetlands as defined in MS 505.02 Subd. 1, or public highways to be designated other than as shown.

John C. Larson
John C. Larson, Land Surveyor
Minnesota License No. 19828

STATE OF MINNESOTA
COUNTY OF Dakota

The foregoing Surveyor's Certificate was acknowledged before me this 8th day of April, 2004, by John C. Larson, Land Surveyor, Minnesota License No. 19828.

NICHOLAS J. KOLSRUD
NOTARY PUBLIC
MY COMM EXP 01/31/2005

Notary Public Dakota County, Minnesota
My Commission Expires 1-31-2005

ANOKA, MINNESOTA

This plat of CUTTERS GROVE 3RD ADDITION, was approved by the Planning Commission of the City of Anoka, Minnesota, at a regular meeting thereof held this 7th day of October, 2003.

PLANNING COMMISSION OF THE CITY OF ANOKA, MINNESOTA
Paul CHAIRMAN

This plat of CUTTERS GROVE 3RD ADDITION, was approved and accepted by the City Council of Anoka, Minnesota, at a regular meeting thereof held this 12 day of March, 2004. If applicable, the written comments and recommendations of the Commissioner of Transportation and the City Engineer have been received by the city or the prescribed 30 day period has elapsed without receipt of such comments and recommendations. As provided by MN. Statutes, Section 505.03, Subd. 2.

CITY COUNCIL OF THE CITY OF ANOKA, MINNESOTA
Agit MAYOR
Amy J. Caldwell CITY CLERK

ANOKA COUNTY SURVEYOR
I hereby certify that this plat has been checked and approved this 22nd day of APRIL, 2004.
BY Larry D. [Signature]
Anoka County Surveyor

1915567
OFFICE OF COUNTY RECORDER
STATE OF MINNESOTA - COUNTY OF ANOKA
I hereby certify that the within instrument was duly recorded and recorded on the 22nd Apr 2004
at 2:28 o'clock P
in book 67 Abst. 17
Maureen J. [Signature]
County Recorder
By LBS
Deputy

I HEREBY CERTIFY THAT THE CURRENT AND DELINQUENT TAXES ON THE LANDS DESCRIBED WITHIN ARE PAID AND THE TRANSFER IS ENTERED
April 22, 2004
MAUREEN J. DIVINE
PROPERTY TAX ADMINISTRATOR
BY S. Culver
DEPUTY PROPERTY TAX ADMINISTRATOR

All monuments required by Minnesota statute, and not shown on this plat, will be set within one year of the recording date of this plat, and shall be evidenced by a 1/2 inch x 14 inch iron pipe, marked by license number 19828.

- DENOTES FOUND IRON MONUMENT.
- DENOTES 1/2 INCH BY 14 INCH IRON MONUMENT SET AND MARKED BY LICENSE NUMBER 19828.

FOR THE PURPOSES OF THIS PLAT THE NORTH LINE OF OUTLOT A CUTTERS GROVE 1ST ADDITION IS ASSUMED TO HAVE A BEARING OF S89°25'49"E.

Receipt 2004058877 # 1115.00

