

CONDOMINIUM NUMBER 12

THE RAINBOW ESTATES CONDOMINIUM

FIRST SUPPLEMENT

These Floor Plans are part of the Declaration filed or recorded as Document No. 589680 on the 7th day of May A.D., 1982

The undersigned, being first duly sworn under oath, certifies and deposes that these Floor Plans of CONDOMINIUM NUMBER 12, THE RAINBOW ESTATES CONDOMINIUMS, being located upon LOT 6 Block 1, Rainbow Estates, Anoka County, Minnesota, fully and accurately depicts all information required by Minnesota Statutes, Section 515A.2-110.

Dated this 12th day of August, 1982.

James L. Kurth
James L. Kurth, Land Surveyor, Minn. Reg. No. 5332

State of Minnesota }
County of Anoka } The foregoing instrument was acknowledged before me this 12th day of August, 1982, by James L. Kurth, a registered professional Land Surveyor.

Jeanne M. Kurth
JEANNE M. KURTH
ANOKA COUNTY
NOTARY PUBLIC - MINNESOTA
MY COMMISSION EXPIRES MAR. 15, 1984
Notary Public
My Commission expires MARCH 13, 1984

Robert B. Baker
Robert B. Baker, a registered professional Architect for the State of Minnesota pursuant to Minnesota Statutes Section 515A.2-101(b) and (c), do hereby certify that all structural components and mechanical systems serving more than one unit of all buildings containing or comprising any units hereby created are substantially completed consistent with the Floor Plans for CONDOMINIUM NUMBER 12, THE RAINBOW ESTATES CONDOMINIUMS, and that all the units are entirely completed consistent with said Floor Plans.

Dated this 23 day of August, 1982.

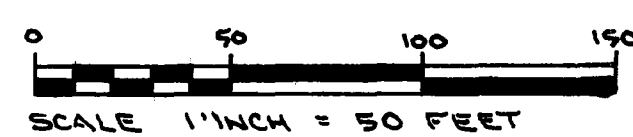
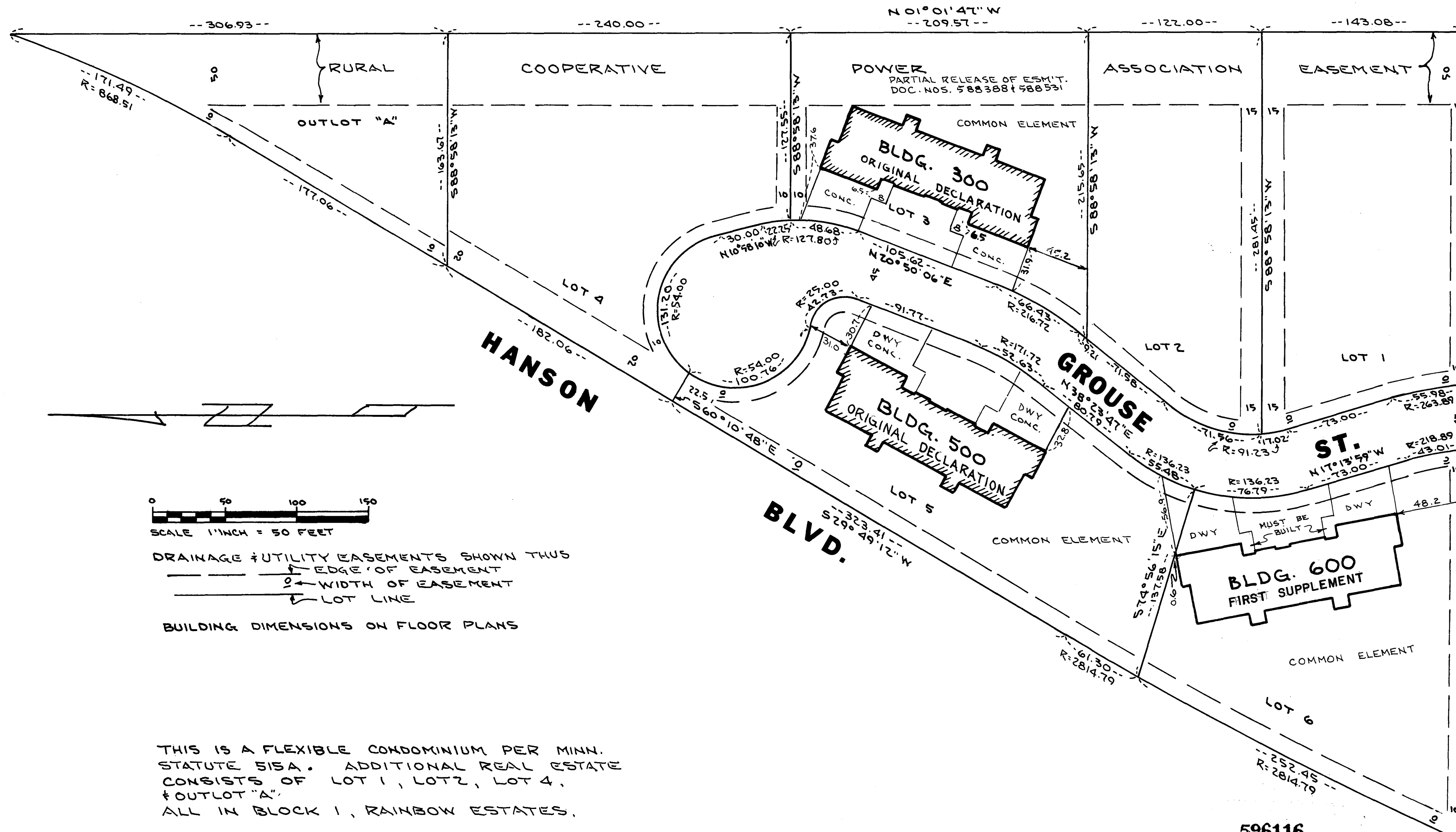
Robert B. Baker
Robert B. Baker a Architect Minn. Reg. No. 6897

State of Minnesota }
County of Anoka } The foregoing instrument was acknowledged before me this 23 day of August, 1982, by Robert B. Baker, a registered professional Architect.

M. D. Anderson
MERLYN D. ANDERSON
NOTARY PUBLIC - MINNESOTA
ANOKA COUNTY
My Commission Expires Aug. 22, 1986
Notary Public
My Commission expires Aug. 22, 1986

Checked and approved this 23rd day of August, 1982.

Roland W. Anderson
Roland W. Anderson, County Surveyor
Anoka County, Minnesota



SCALE 1" INCH = 50 FEET
DRAINAGE & UTILITY EASEMENTS SHOWN THUS
EDGE OF EASEMENT
WIDTH OF EASEMENT
LOT LINE
BUILDING DIMENSIONS ON FLOOR PLANS

THIS IS A FLEXIBLE CONDOMINIUM PER MINN. STATUTE 515A. ADDITIONAL REAL ESTATE CONSISTS OF LOT 1, LOT 2, LOT 4, & OUTLOT "A", ALL IN BLOCK 1, RAINBOW ESTATES.

INDICATES PREVIOUSLY RECORDED FLOOR PLANS

"NO DELINQUENT TAXES AND TRANSFER ENTERED"

Aug 23rd 1982
Charles L. Johnson
Auditor, Anoka County
By *J. R. Kammer*
Deputy

596116
OFFICE OF COUNTY RECORDER
STATE OF MINNESOTA, COUNTY OF ANOKA
I hereby certify that the within instrument was filed in this office for record on the AUG 23 1982 A.D., 1982 at 2:40 o'clock P.M., and was duly recorded in book 1 OF page 14 CONDOMINIUMS
By *Paul J. Oudall*
County Recorder
By *V. P. Walderness*
Deputy

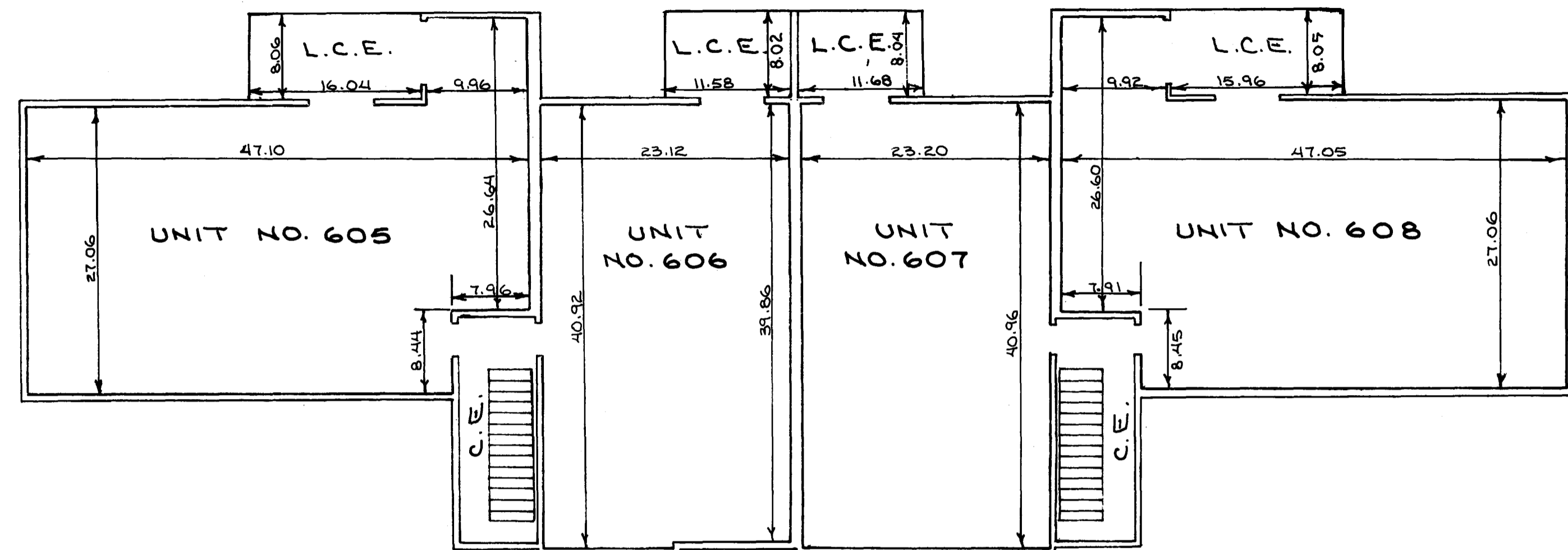
ACAD 84133 AUG 23 82 25.00

SITE PLAN

CONDOMINIUM NUMBER 12

THE RAINBOW ESTATES CONDOMINIUM

FIRST SUPPLEMENT



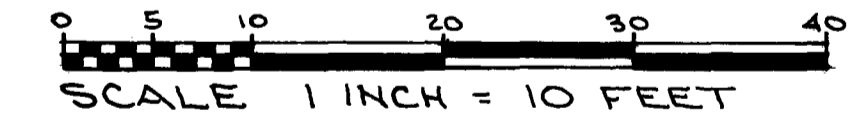
UPPER LEVEL

C.E. = COMMON ELEMENT

L.C.E. = LIMITED COMMON ELEMENT

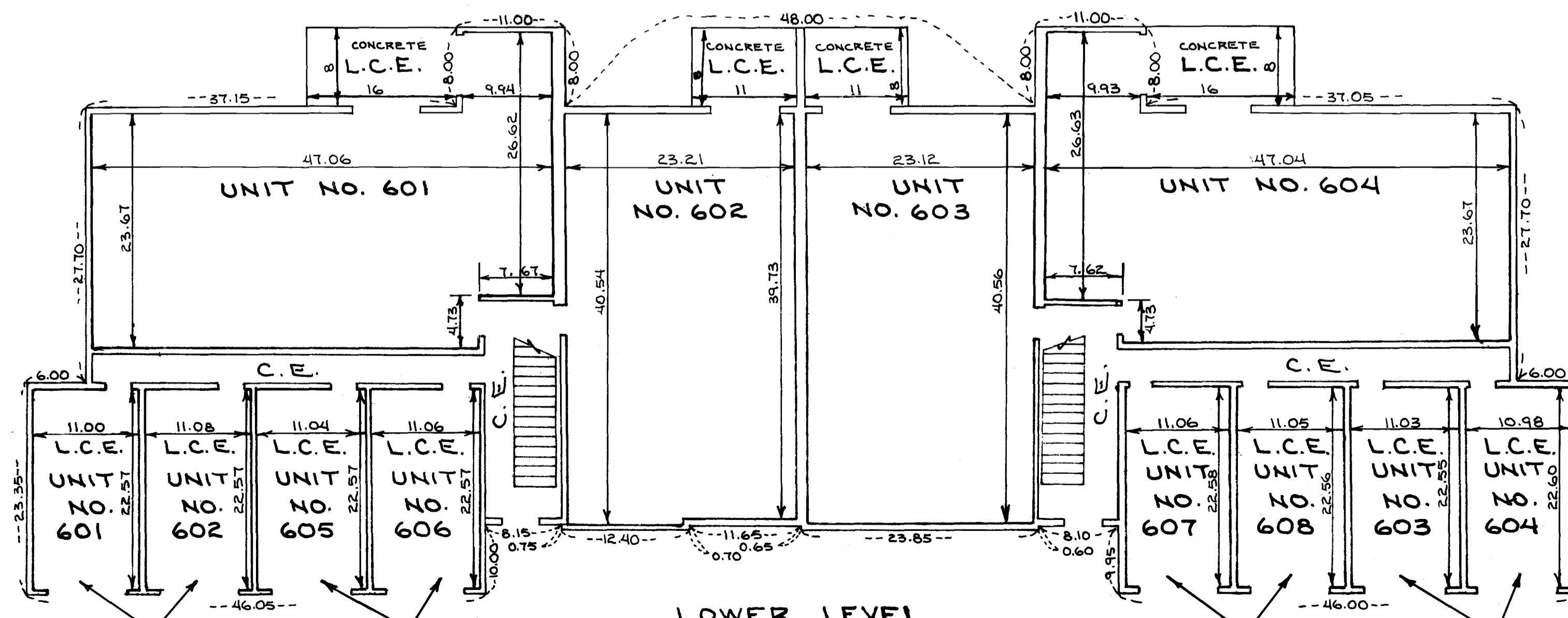
ELEVATIONS
 LOWER LEVEL FLOOR = 875.80
 LOWER LEVEL CEILING = 883.86
 UPPER LEVEL FLOOR = 885.80
 UPPER LEVEL CEILING = 893.86

BENCHMARK RAILROAD SPIKE IN 18" OAK
 EAST SIDE OF GROUSE ST. CUL DE SAC
 ELEVATION 881.49 U.S.G.S.



ALL MEASUREMENTS ARE IN FEET & HUNDREDTHS OF A FOOT TO FINISHED SURFACES

ALL DRIVEWAYS IN FRONT OF GARAGES ARE AN EXCLUSIVE LIMITED COMMON ELEMENT BETWEEN THE EXTENDED SIDE WALLS TO GROUSE ST.



LOWER LEVEL

GARAGES
 ELEVATIONS FLOOR = 875.42
 CEILING = 883.88

GARAGES
 ELEVATIONS FLOOR = 875.43
 CEILING = 883.80