

# CONDOMINIUM NUMBER 14 COON RAPIDS CARRIAGE HOMES A CONDOMINIUM

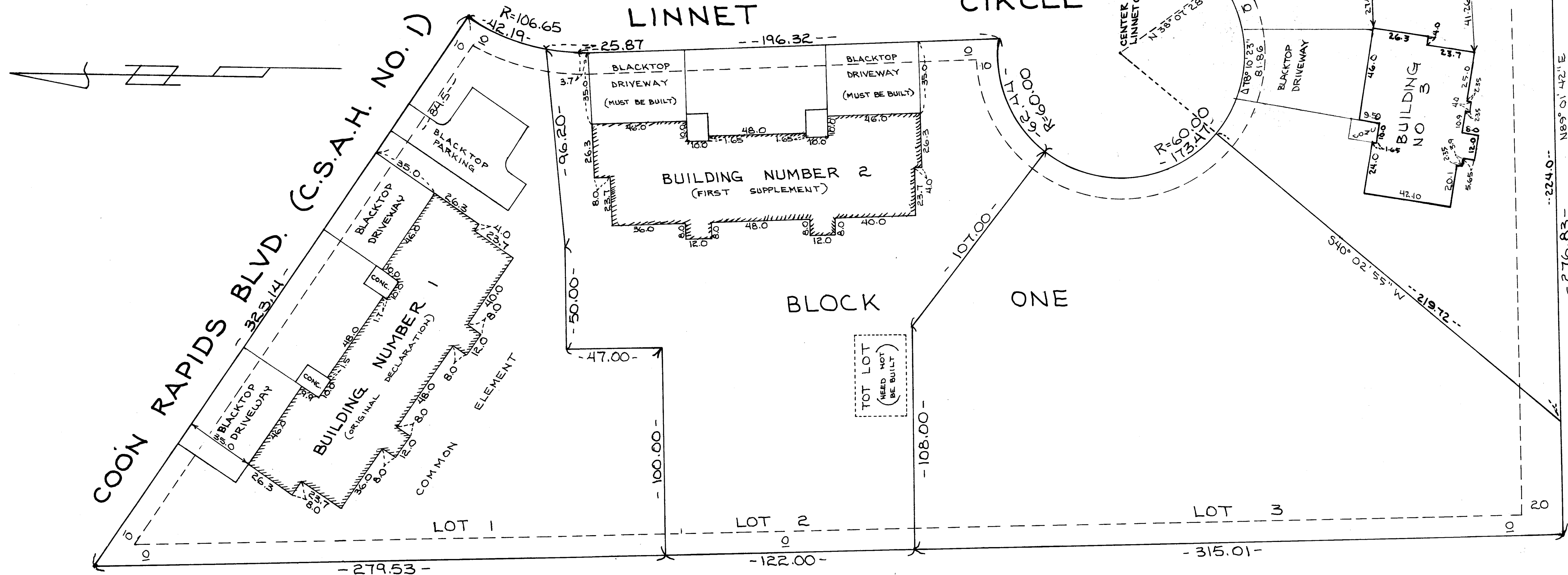
## SECOND SUPPLEMENT

### LINNET

### CIRCLE

### BLOCK

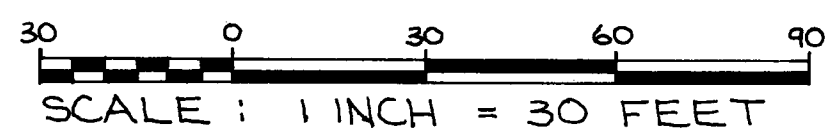
### ONE



OFFICE OF COUNTY RECORDER  
STATE OF MINNESOTA, COUNTY OF ANOKA  
I hereby certify that the within instrument was filed in this office for record on the MAR 28 1985 A.D., 19 9:50 o'clock A.M., and was duly recorded in book 2 of page 13  
*Ed J. Omdahl*  
County Recorder  
*P. V. Halderman*  
Deputy

THESE FLOOR PLANS ARE A PART OF THE DECLARATION FILED OR RECORDED AS DOCUMENT NUMBER 669715 ON THE 27<sup>TH</sup> DAY OF MARCH A.D., 1985

ANOKA COUNTY RECORDER



DRAINAGE & UTILITY EASEMENTS SHOWN THUS:  
 - EDGE OF EASEMENT  
 - WIDTH OF EASEMENT  
 - LOT LINE



THIS IS A FLEXIBLE CONDOMINIUM PER MN. STATUTE 515A. ADDITIONAL REAL ESTATE CONSISTS OF THAT PART OF LOT 3, BLOCK 1, CARRIAGE HOMES OF COON RAPIDS, ANOKA COUNTY, MN., LYING NORTHWESTERLY OF THE FOLLOWING DESCRIBED LINE:  
 BEGINNING AT A POINT ON THE SOUTH LINE OF SAID LOT 3, DISTANT 224.00 FT. WLY. FROM THE SE COR. OF SAID LOT 3; THENCE RUNNING NELY TO THE CENTER OF THE CUL DE SAC OF LINNET CIRCLE AND SAID LINE THERE TERMINATING.

#### \*SECOND SUPPLEMENT

The undersigned, being first duly sworn under oath, certifies and deposes that these Floor Plans of CONDOMINIUM NUMBER 14, COON RAPIDS CARRIAGE HOMES, A CONDOMINIUM, being located upon: That part of Lot 3, Block 1, Carriage Homes of Coon Rapids, Anoka County, Minnesota, lying southeasterly of the following described line:  
 Beginning at a point on the south line of said Lot 3, distant 224.00 feet, westerly from the southeast corner of said Lot 3; thence running northeasterly to the center of the cul de sac of Linnet Circle and said line there terminating.  
 fully and accurately depicts all information required by Minnesota Statutes, Section 515A.2-110.

Dated this 28<sup>TH</sup> day of JANUARY, 19 85.  
*Russell J. Kurth*  
 Russell J. Kurth, Land Surveyor, Minnesota Registration Number 16113

State of Minnesota )  
 County of Anoka )  
**CONNIE B. KURTH**  
 ANOKA COUNTY  
 NOTARY PUBLIC-MINNESOTA  
 MY COMMISSION EXPIRES FEB. 1, 1986

The foregoing instrument was acknowledged before me this 28<sup>TH</sup> day of JANUARY, 19 85, by Russell J. Kurth, a registered professional Land Surveyor.  
*Connie B. Kurth*  
 Notary Public, Anoka County, Minnesota  
 My Commission Expires FEB 1, 1986

**CHARLES NOVAK**, a registered professional **ARCHITECT**  
 For the State of Minnesota pursuant to Minnesota Statutes Section 515A.2-101 (b) and (c) do hereby certify that all structural components and mechanical systems serving more than one unit of all buildings containing or comprising any units hereby created are substantially completed consistent with the Floor Plans for CONDOMINIUM NO. 14, COON RAPIDS CARRIAGE HOMES, A CONDOMINIUM, and that all the units are entirely complete consistent with the Floor Plans.

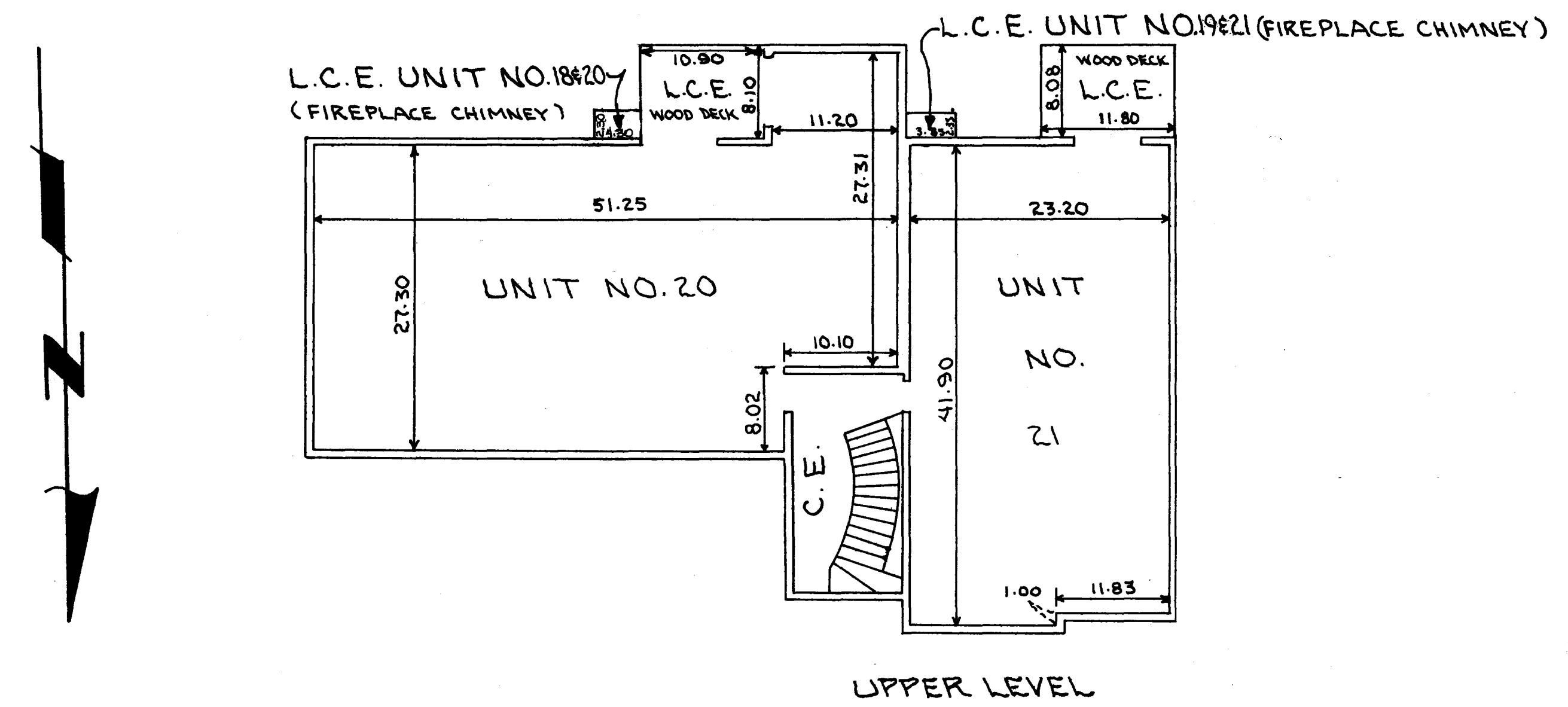
Dated this FIRST day of FEBRUARY, 19 85.  
*Charles Novak*  
 a **REGISTERED ARCHITECT**, Minnesota Registration No. 8687

State of Minnesota )  
 County of DAKOTA ) The foregoing instrument was acknowledged before me this 1<sup>ST</sup> day of FEBRUARY, 19 85, by CHARLES NOVAK, a registered professional **ARCHITECT**.  
**FRANCES J. SEASHOLTZ**  
 NOTARY PUBLIC-MINNESOTA  
 DAKOTA COUNTY  
 My Commission Expires JANUARY 9, 1991  
 Notary Public, DAKOTA County, Minnesota

Checked and approved this 19<sup>TH</sup> day of FEBRUARY, 19 85.  
*Roland W. Anderson*  
 Roland W. Anderson, County Surveyor  
 Anoka County, Minnesota

## SITE PLAN

# CONDOMINIUM NUMBER 14 COON RAPIDS CARRIAGE HOMES A CONDOMINIUM SECOND SUPPLEMENT



L.C.E. = LIMITED COMMON ELEMENT

C.E. = COMMON ELEMENT

ELEVATIONS:

LOWER LEVEL FLOOR = 866.95

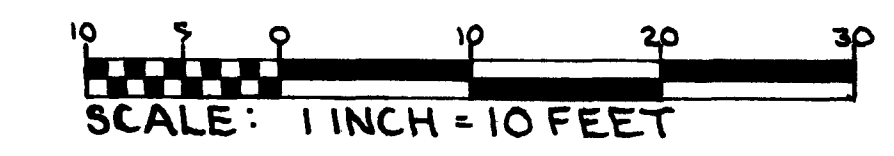
LOWER LEVEL CEILING = 874.99

UPPER LEVEL FLOOR = 877.15

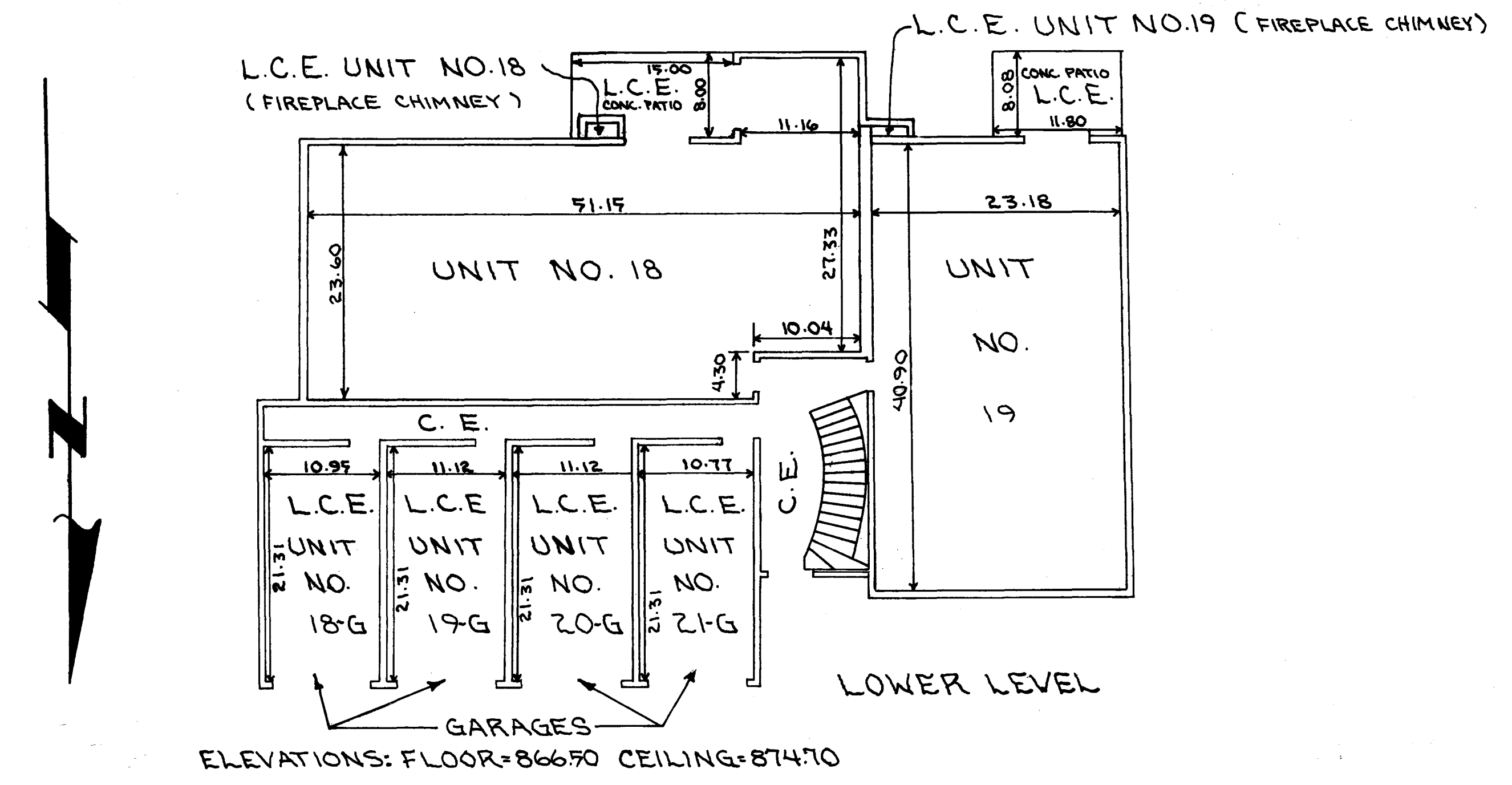
UPPER LEVEL CEILING = 885.10

BENCHMARK IS TOP NUT OF HYDRANT 50' ± WEST OF THE NORTHEASTERLY CORNER OF LOT 1

BENCHMARK ELEVATION = 865.82 U.S.G.S. DATUM



ALL MEASUREMENTS ARE IN FEET AND HUNDREDTHS OF A FOOT TO FINISHED SURFACES



"NO DELINQUENT TAXES AND TRANSFER ENTERED"

MARCH 28 1985

Charles R. Pillsbury  
Auditor, Anoka County

BY Raymond J. Hite  
Deputy