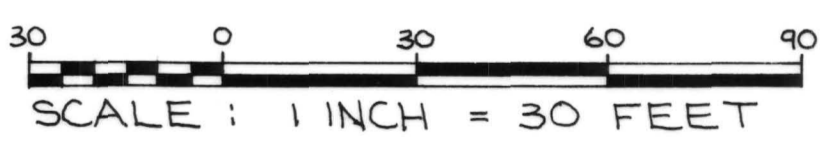
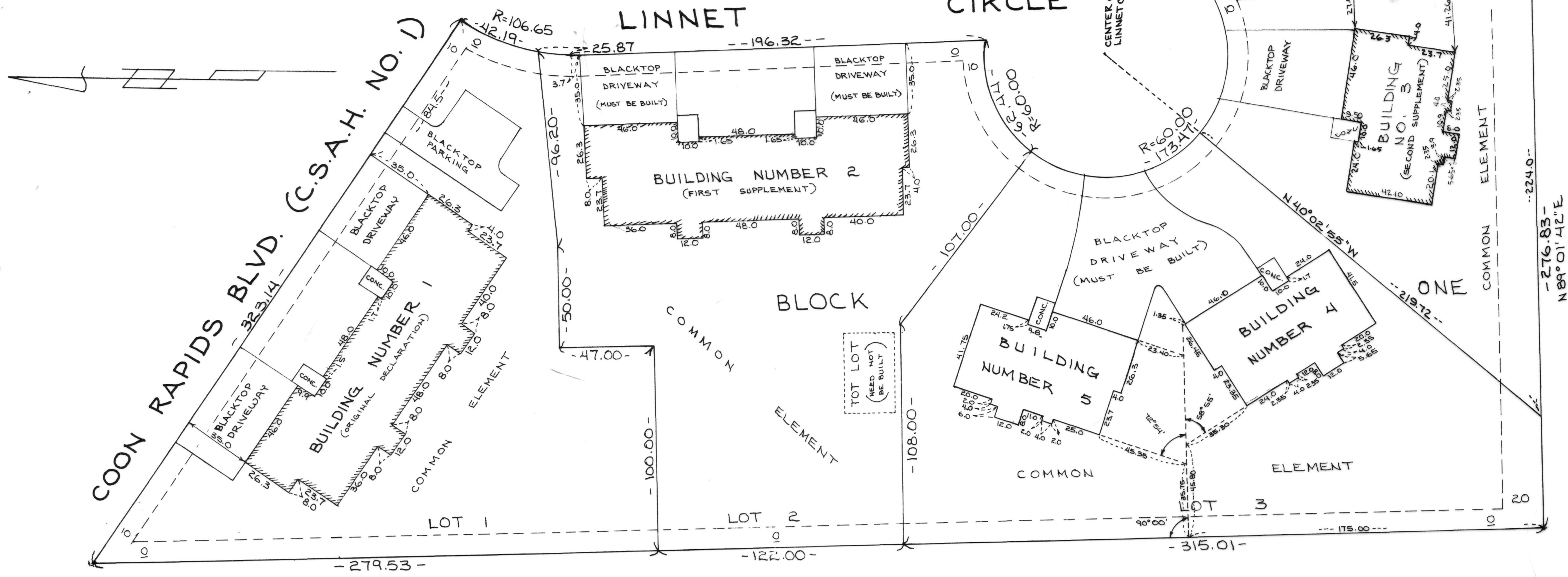


CONDOMINIUM NUMBER 14 COON RAPIDS CARRIAGE HOMES A CONDOMINIUM

THESE FLOOR PLANS ARE A PART OF THE DECLARATION FILED OR RECORDED AS DOCUMENT NUMBER 675977 ON THE JUN 7 DAY OF 1985 A.D., 1985
Ted J. Curdahl
ANOKA COUNTY RECORDER

THIRD SUPPLEMENT



SCALE: 1 INCH = 30 FEET
DRAINAGE & UTILITY EASEMENTS SHOWN THUS: EDGE OF EASEMENT, WIDTH OF EASEMENT, LOT LINE



BUILDING WITH CROSS HATCHING INDICATES PREVIOUSLY RECORDED FLOOR PLANS
THIS IS A FLEXIBLE CONDOMINIUM PER MN. STATUTE 515A.

The undersigned, being first duly sworn under oath, certifies and deposes that these Floor Plans of CONDOMINIUM NUMBER 14, COON RAPIDS CARRIAGE HOMES, A CONDOMINIUM, THIRD SUPPLEMENT, being located upon: That part of Lot 3, Block 1, Carriage Homes of Coon Rapids, Anoka County, Minnesota, lying northwesterly of the following described line: Beginning at a point on the south line of said Lot 3, distant 224.00 feet, westerly from the southeast corner of said Lot 3; thence running northeasterly to the center of the cul de sac of Linnet Circle and said line there terminating, fully and accurately depicts all information required by Minnesota Statutes, Section 515A.2-110.

Dated this 29TH day of MAY, 19 85.

Russell J. Kurth
Russell J. Kurth, Land Surveyor, Minnesota Registration Number 16113

State of Minnesota)
County of Anoka) The foregoing instrument was acknowledged before me this 29TH day of MAY, 19 85, by Russell J. Kurth, a registered professional Land Surveyor.

KAREN J. KURTH
NOTARY PUBLIC - MINNESOTA
ANOKA COUNTY
My Commission Expires Feb. 13, 1991

Karen J. Kurth
Karen J. Kurth, Notary Public, Anoka County, Minnesota
My Commission Expires FEBRUARY 13, 1991

CHARLES NOVAL, a registered professional ARCHITECT

For the State of Minnesota pursuant to Minnesota Statutes Section 515A.2-101 (b) and (c) do hereby certify that all structural components and mechanical systems serving more than one unit of all buildings containing or comprising any units hereby created are substantially completed consistent with the Floor Plans for CONDOMINIUM NO. 14, COON RAPIDS CARRIAGE HOMES, A CONDOMINIUM, THIRD SUPPLEMENT, and that all the units are entirely complete consistent with the Floor Plans.

Dated this 6TH day of JUNE, 19 85.

Charles Noval
Charles Noval, a REGISTERED ARCHITECT, Minnesota Registration No. 8087

State of Minnesota)
County of DAKOTA) The foregoing instrument was acknowledged before me this 6TH day of JUNE, 19 85, by CHARLES NOVAL, a registered professional ARCHITECT.

FRANCES J. SEASHOLTZ
NOTARY PUBLIC - MINNESOTA
DAKOTA COUNTY
My Commission Expires Jan. 9, 1991

Frances J. Seasholtz
Frances J. Seasholtz, Notary Public, DAKOTA County, Minnesota
My Commission Expires FEBRUARY 9, 1991

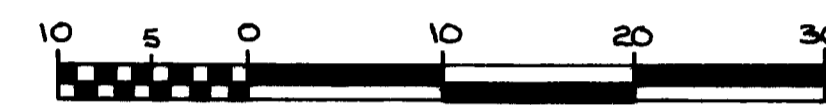
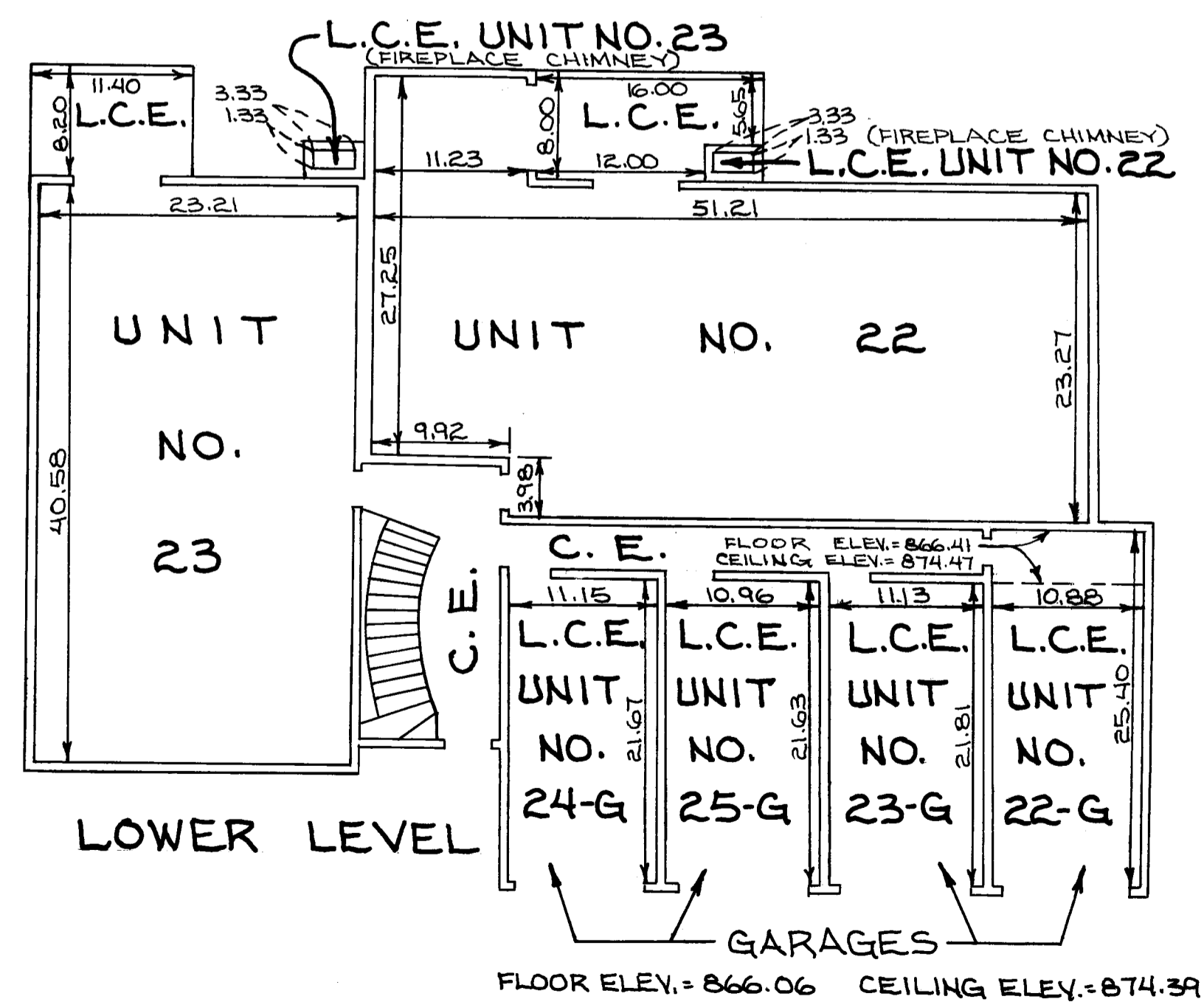
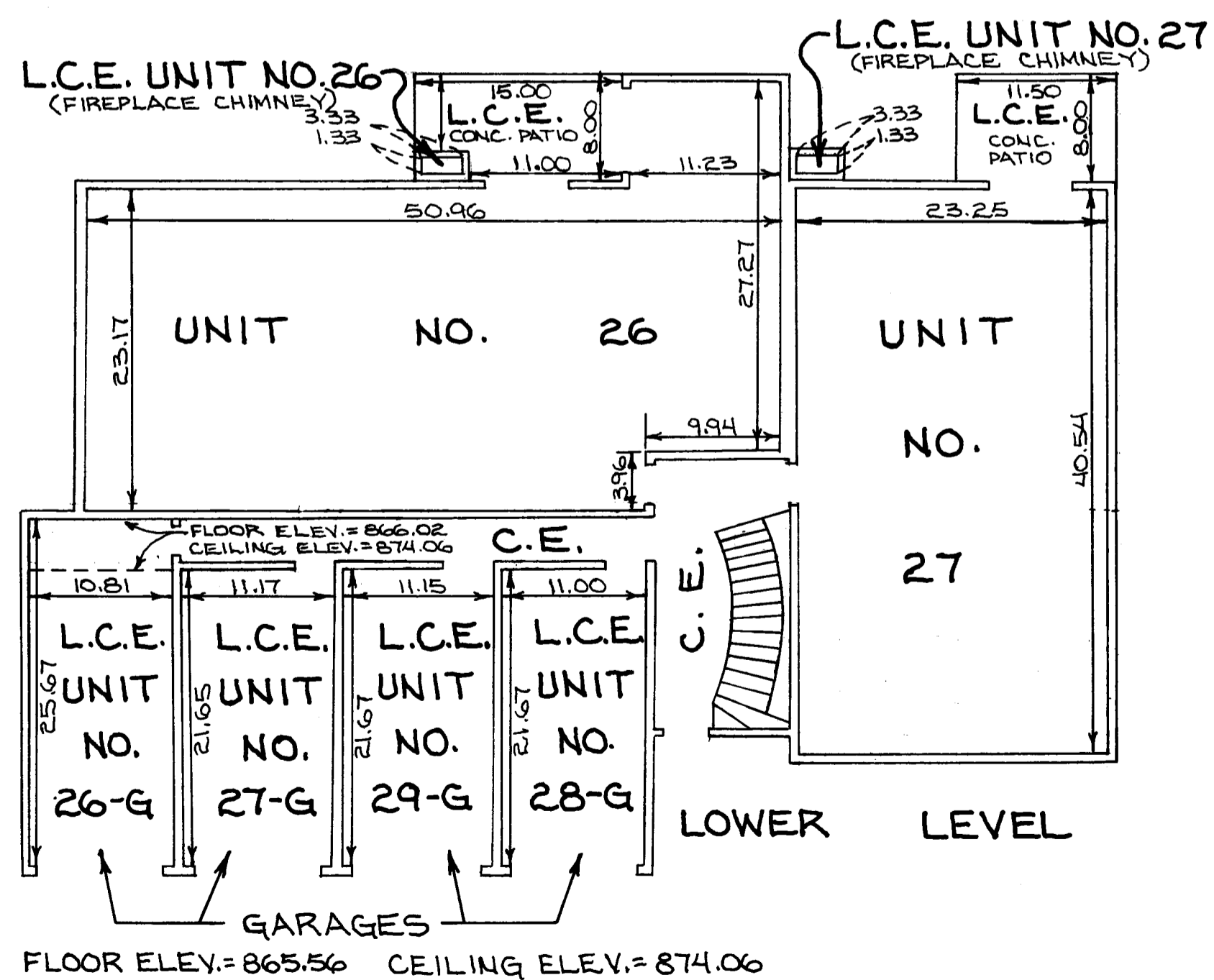
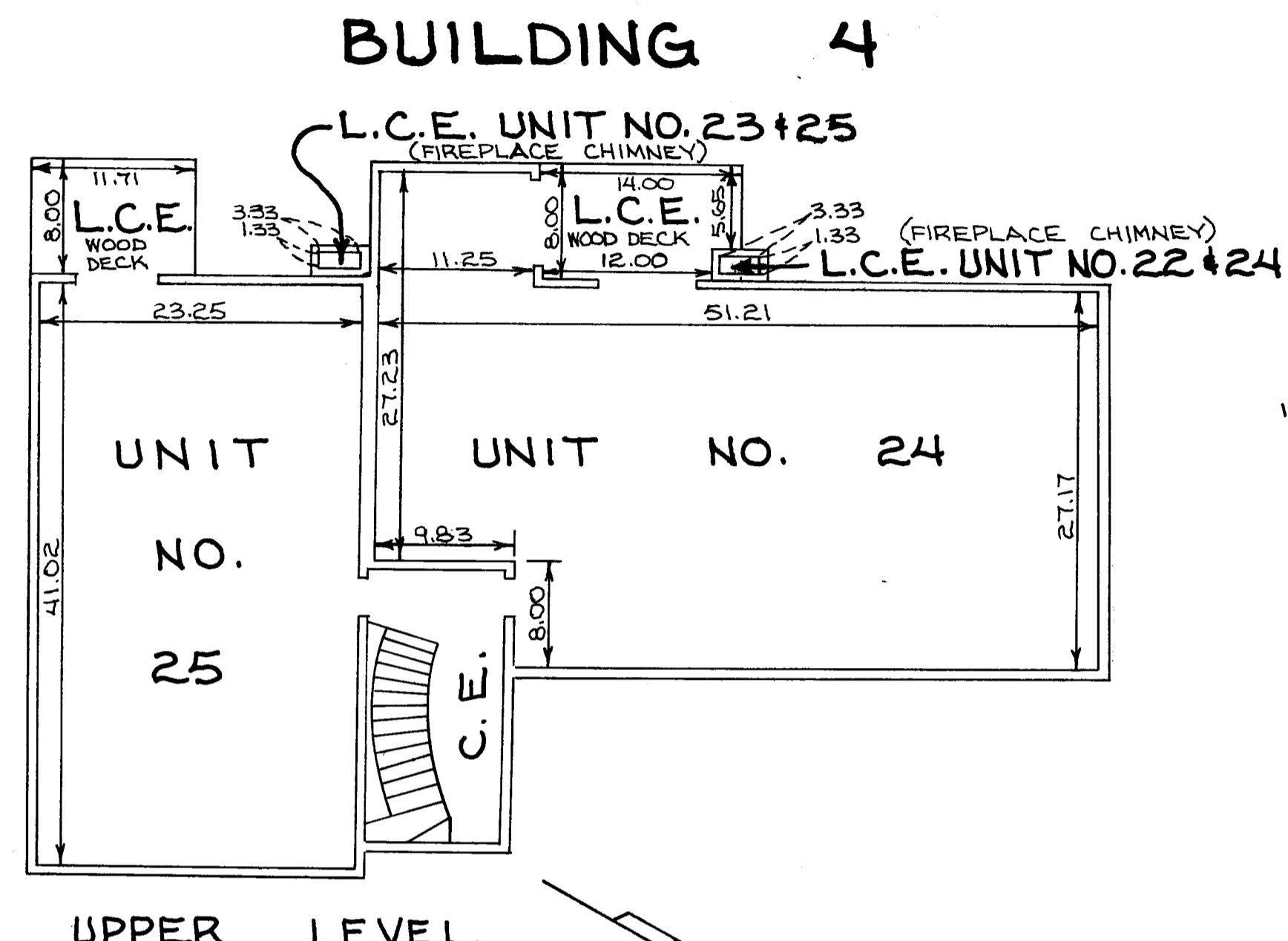
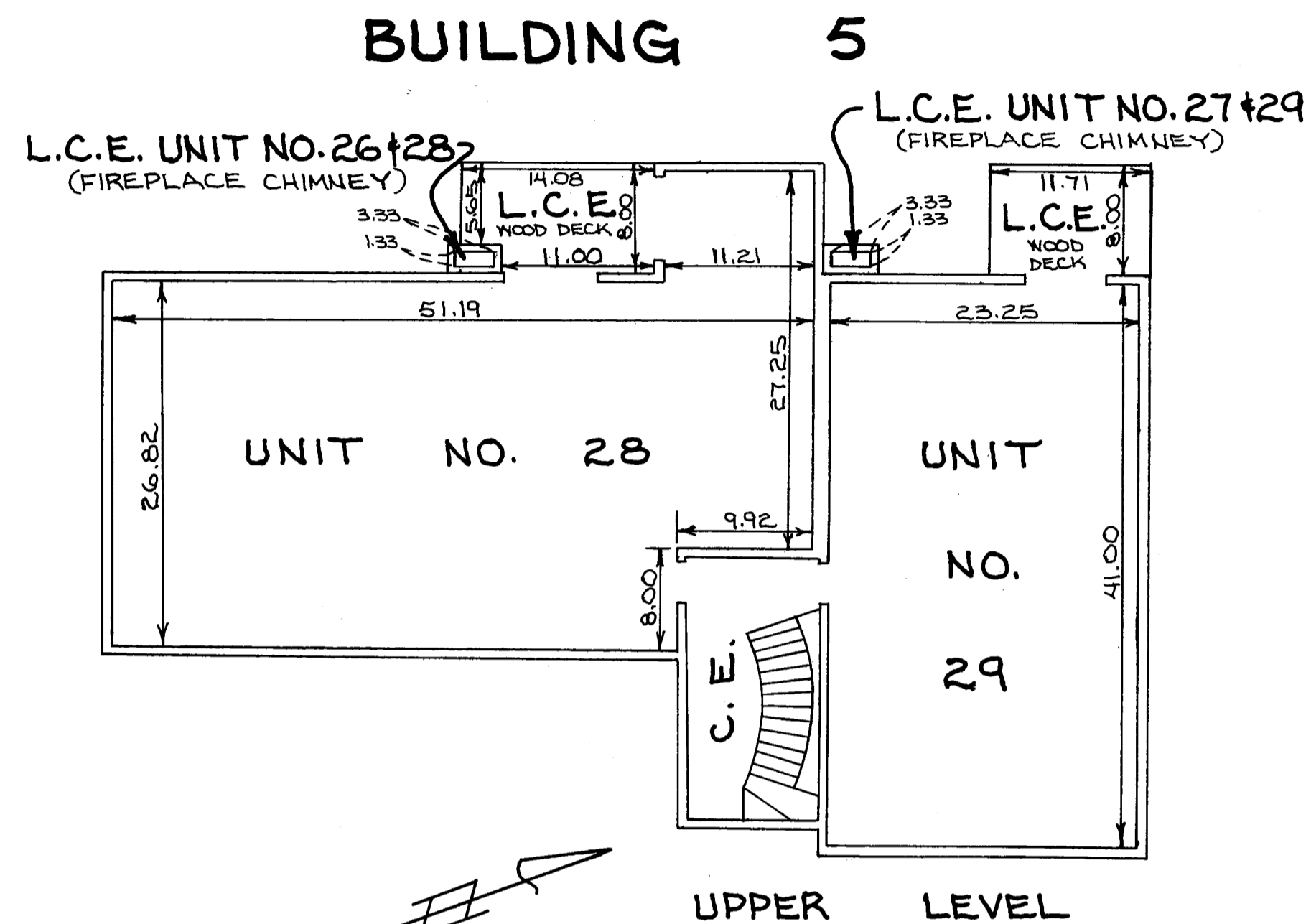
Checked and approved this 7TH day of June, 19 85.

Roland W. Anderson
Roland W. Anderson, County Surveyor
Anoka County, Minnesota

SITE PLAN

675977
OFFICE OF COUNTY RECORDER
STATE OF MINNESOTA, COUNTY OF ANOKA
I hereby certify that the within instrument was filed in this office for record on the JUN 7 1985 A.D., 1985
11:35 o'clock A.M., and was duly recorded in book 2 of page 16
CON DOMINIUMS
Ted J. Curdahl
County Recorder
By *T.P. Halverson*
Deputy

CONDOMINIUM NUMBER 14 COON RAPIDS CARRIAGE HOMES A CONDOMINIUM THIRD SUPPLEMENT



SCALE: 1 INCH = 10 FEET
ALL MEASUREMENTS ARE IN FEET AND HUNDREDTHS OF A FOOT TO FINISHED SURFACES
L.C.E. = LIMITED COMMON ELEMENT
C.E. = COMMON ELEMENT

ELEVATIONS:
BUILDING 4
LOWER LEVEL FLOOR = 866.41
LOWER LEVEL CEILING = 874.47
UPPER LEVEL FLOOR = 876.45
UPPER LEVEL CEILING = 884.45

BUILDING 5
LOWER LEVEL FLOOR = 866.02
LOWER LEVEL CEILING = 874.06
UPPER LEVEL FLOOR = 876.10
UPPER LEVEL CEILING = 884.10

BENCHMARK IS TOP NUT OF HYDRANT 50'± WEST OF THE NORTHEASTERLY CORNER OF LOT 1.

B.M. ELEV. = 865.82 U.S.G.S. DATUM

FLOOR PLANS