

CONDOMINIUM NUMBER 20 LABELLE PARK TWO CONDOMINIUM

These Floor Plans are part of the Declaration filed and recorded as Document No. 598108 on this 23RD day of September A.D., 1982.

LOT SURVEYS COMPANY, INC.
LAND SURVEYORS

SITE PLAN

The undersigned, being first duly sworn under oath, certifies and deposes that these Floor Plans of Condominium Number 20, Labelle Park Two Condominium, being located upon

The South Half of Lots 8, 9, and 10, Block 4, Reservoir Hills, Anoka County, Minnesota

The East 50.00 feet of Lot 11, Block 4, Reservoir Hills, except the North 155.00 feet thereof.

The South Half of that part of Lot 11, Block 4, Reservoir Hills, Anoka County, Minnesota lying West of the East 50.00 feet thereof, except the West 20.00 feet of Lot 11.

Those parts of Lot 35, except the West 10.00 feet of said Lot 35 and all of Lot 36 lying Northerly of a line, said line being 30 feet Northerly of and parallel with the following described center line:

Beginning at a point on the South line of 41st Avenue NE said point being 229.00 feet East of the Northwest corner of Block 5, Reservoir Hills, Anoka County, Minnesota; thence Northerly on a line 41.00 feet, West of and parallel with the East line of Lot 31, Block 4, Reservoir Hills, a distance of 163.50 feet, to a point being 133.50 feet Northerly of the South line of Block 4, Reservoir Hills; thence Easterly, on a line, 133.50 feet North of and parallel with the South line of said Block 4, Reservoir Hills, a distance of 350.99 feet; thence Southeasterly on a tangential curve to the right, having a central angle of 29 degrees 34 minutes 22 seconds and a radius of 295.19 feet, a distance of 152.36 feet; thence Southeasterly, tangent to said curve, a distance of 38.28 feet; thence Southeasterly on a tangential curve to the left, having a central angle of 29 degrees 34 minutes 22 seconds and a radius of 121.54 feet, a distance of 62.73 feet; thence Easterly, tangent to said curve, a distance of 1.02 feet, more or less, to the East line of Lot 36, Block 4, Reservoir Hills and there terminating. All in Anoka County, Minnesota.

fully and accurately depicts all information required by Minnesota Statutes Section 515A. 2-110. Dated this 22ND day of SEPTEMBER 1982.

Raymond A. Prasch
Raymond A. Prasch, Registered Land Surveyor
Minnesota Registration No. 6743

State of Minnesota
County of Hennepin
The foregoing instrument was acknowledged before me this 22ND day of SEPTEMBER 1982, by Raymond A. Prasch, a registered professional land surveyor.

Milton E. Hyland
Milton E. Hyland, Notary Public, Hennepin County, Minnesota
My Commission Expires November 19, 1987

Donald J. Baker, a registered professional architect for the State of Minnesota pursuant to Minnesota Statutes Section 515A. 2-101 (b) and (c) does hereby certify that all structural components and mechanical systems serving more than one unit of all buildings containing or comprising any units hereby created are substantially completed consistent with the Floor Plans for Condominium Number 20, Labelle Park Two Condominium, and that all the units are entirely completed consistent with said Floor Plans.

Dated this 23 day of SEPTEMBER 1982.

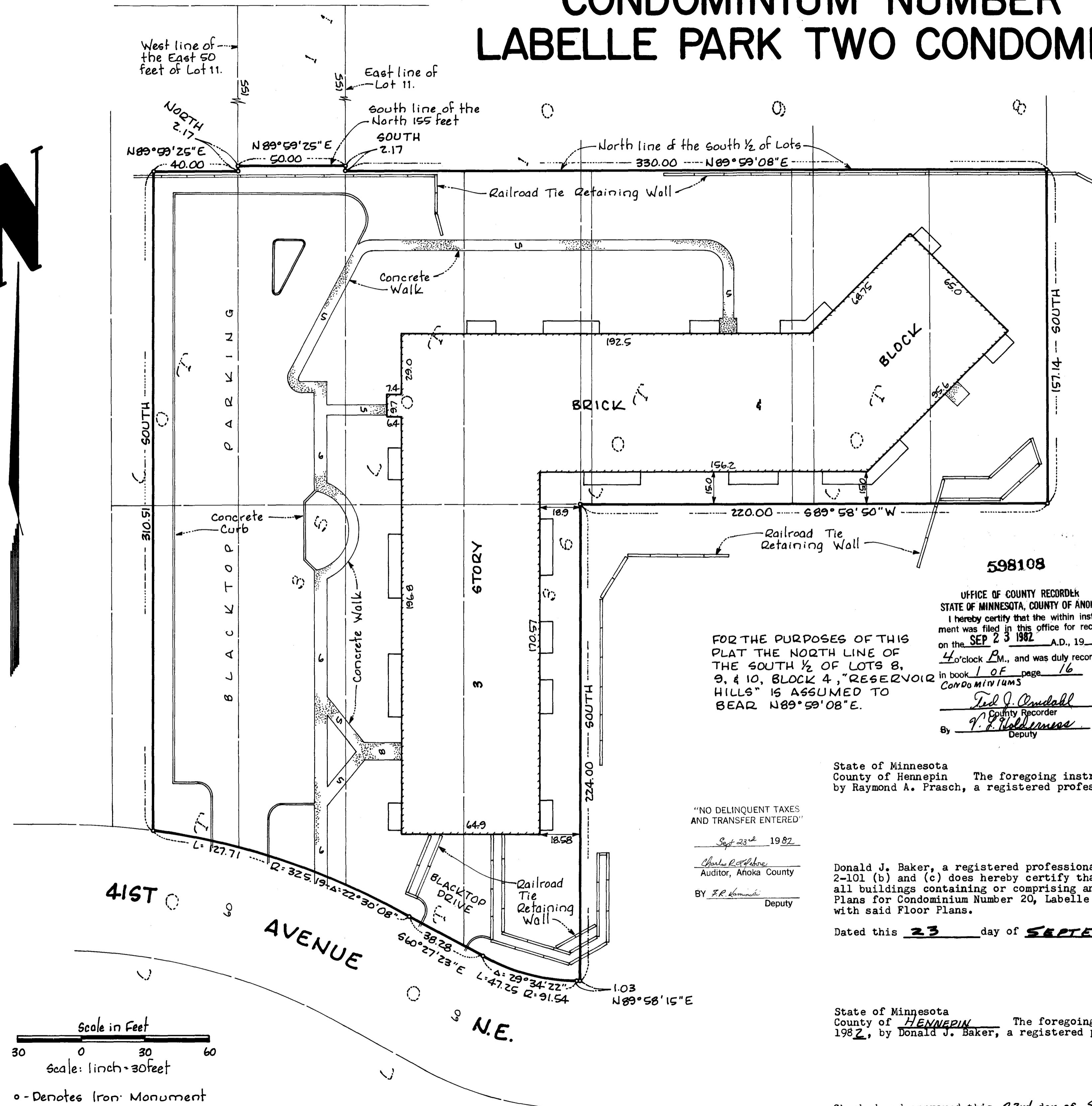
Donald J. Baker
Donald J. Baker, architect
Minnesota Registration No. 9861

State of Minnesota
County of HENNEPIN
The foregoing instrument was acknowledged before me this 23RD day of SEPTEMBER 1982, by Donald J. Baker, a registered professional architect.

Milton E. Hyland
Notary Public, HENNEPIN County, Minnesota
My Commission Expires Nov 19, 1987

Checked and approved this 23rd day of September 1982.

Robert W. Anderson
Anoka County Surveyor



Scale in Feet
0 30 60
Scale: 1 inch = 30 feet
o - Denotes Iron Monument

"NO DELINQUENT TAXES AND TRANSFER ENTERED"

Sept 23rd 1982

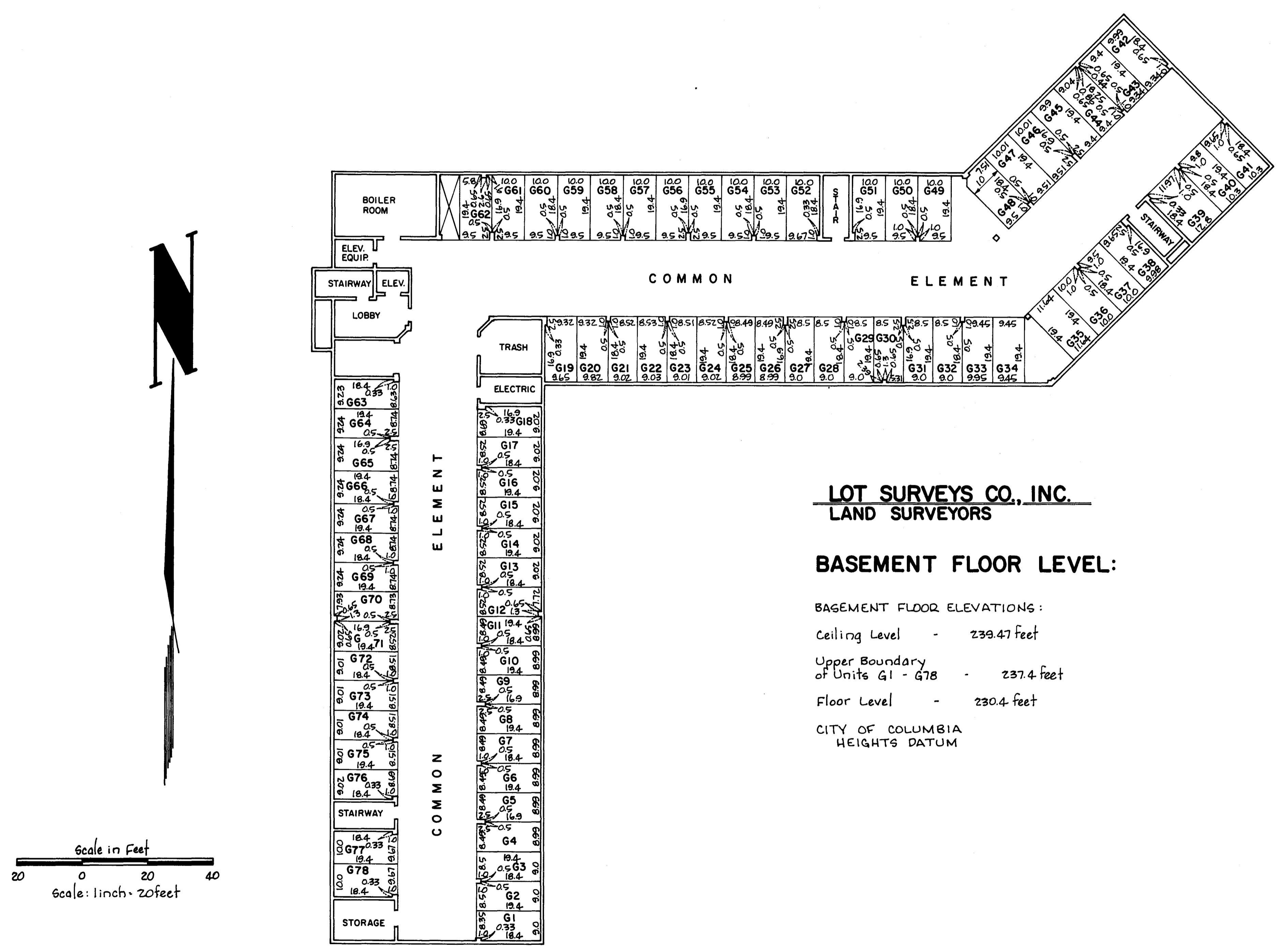
Charles R. Johnson
Auditor, Anoka County

BY F.R. Korman
Deputy

FOR THE PURPOSES OF THIS PLAT THE NORTH LINE OF THE SOUTH 1/2 OF LOTS 8, 9, & 10, BLOCK 4, "RESERVOIR HILLS" IS ASSUMED TO BEAR N89°59'08"E.

598108
OFFICE OF COUNTY RECORDS
STATE OF MINNESOTA, COUNTY OF ANOKA
I hereby certify that the within instrument was filed in this office for record on the SEP 23 1982 A.D., 1982 at 4 o'clock P.M., and was duly recorded in book 108 of page 16 CONDO MINUTUMS
Paul J. Conditall
County Recorder
By P. J. Waldemere
Deputy

CONDOMINIUM NUMBER 20 LABELLE PARK TWO CONDOMINIUM

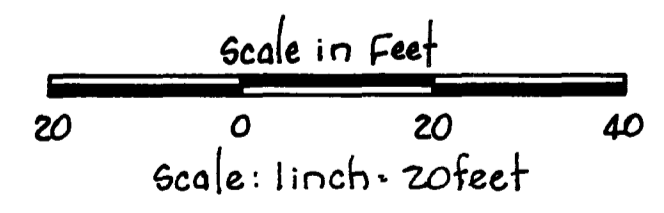


LOT SURVEYS CO., INC.
LAND SURVEYORS

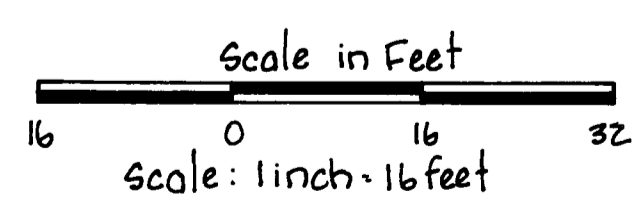
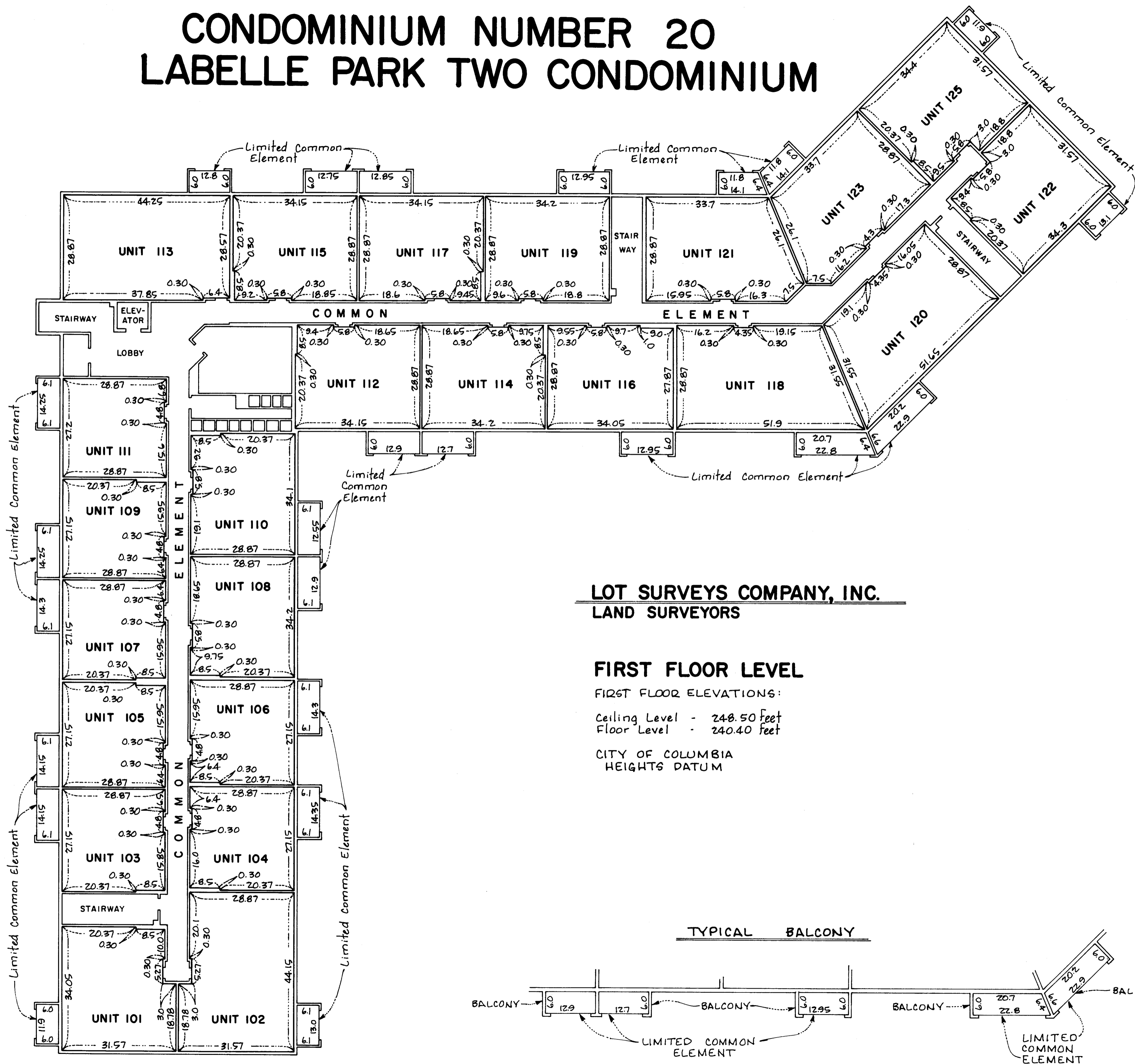
BASEMENT FLOOR LEVEL:

- BASEMENT FLOOR ELEVATIONS:
- Ceiling Level - 239.47 feet
 - Upper Boundary of Units G1 - G78 - 237.4 feet
 - Floor Level - 230.4 feet

CITY OF COLUMBIA
HEIGHTS DATUM



CONDOMINIUM NUMBER 20 LABELLE PARK TWO CONDOMINIUM

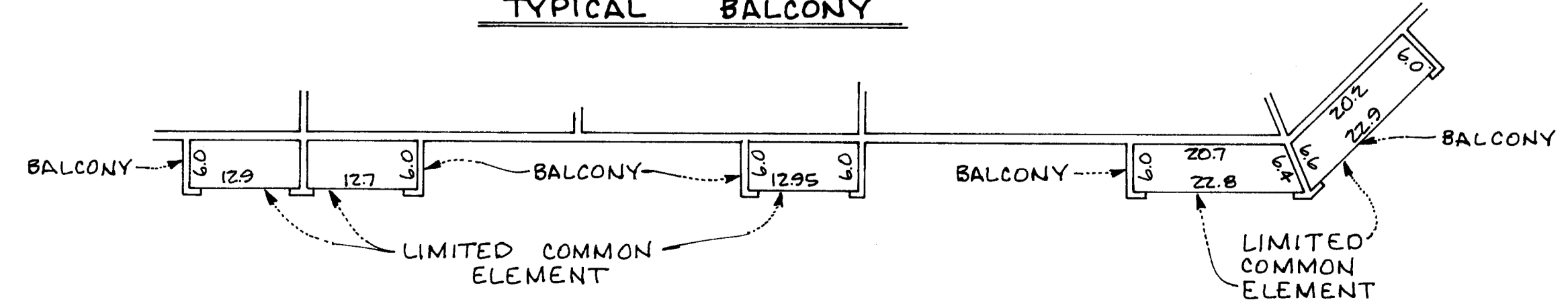


LOT SURVEYS COMPANY, INC.
LAND SURVEYORS

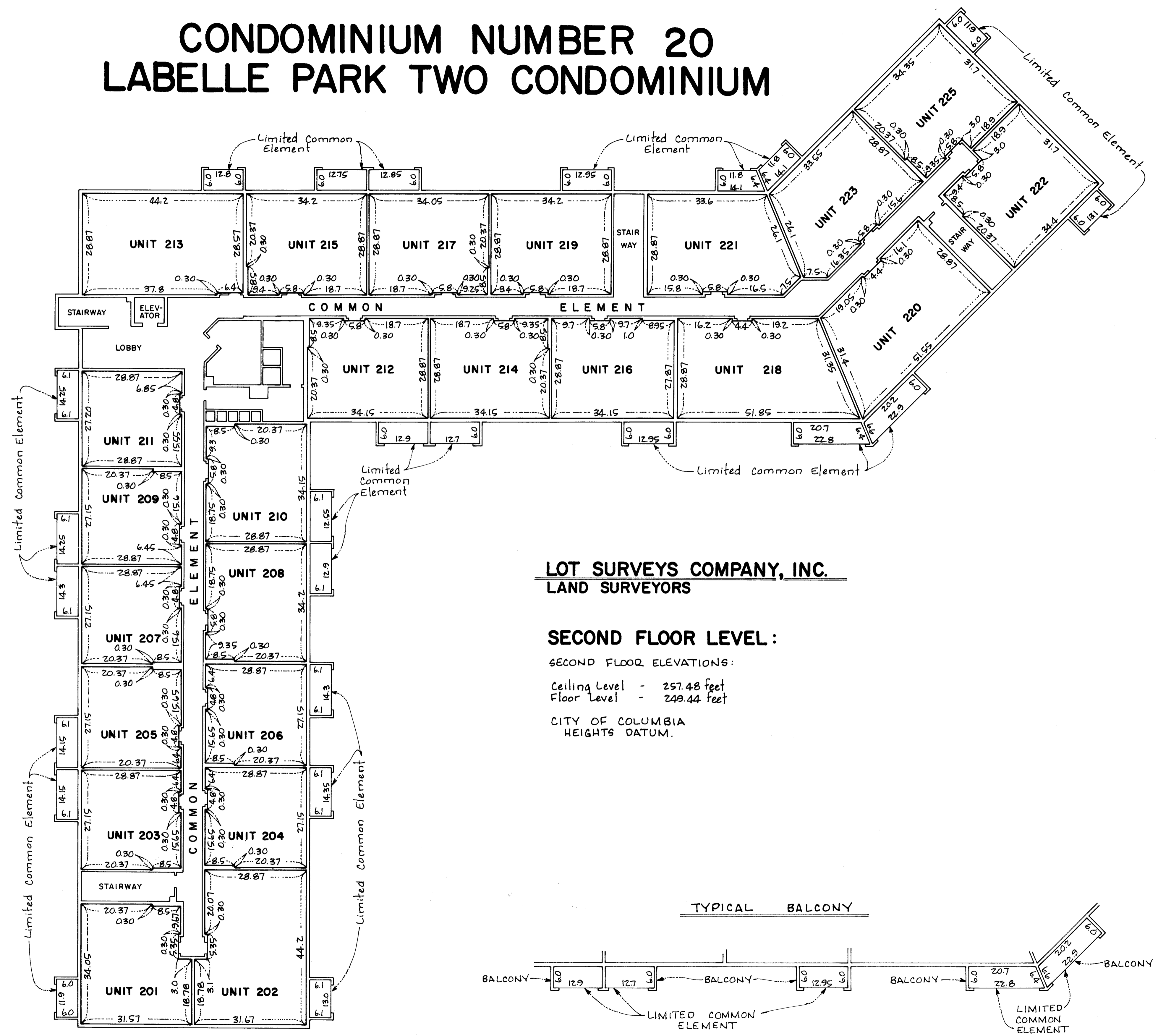
FIRST FLOOR LEVEL

FIRST FLOOR ELEVATIONS:
Ceiling Level - 248.50 Feet
Floor Level - 240.40 Feet
CITY OF COLUMBIA
HEIGHTS DATUM

TYPICAL BALCONY



CONDOMINIUM NUMBER 20 LABELLE PARK TWO CONDOMINIUM



LOT SURVEYS COMPANY, INC.
LAND SURVEYORS

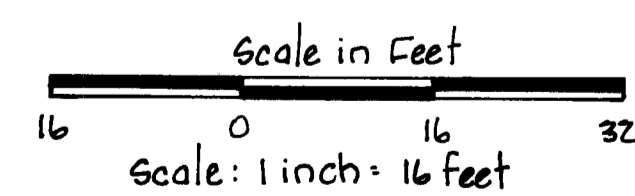
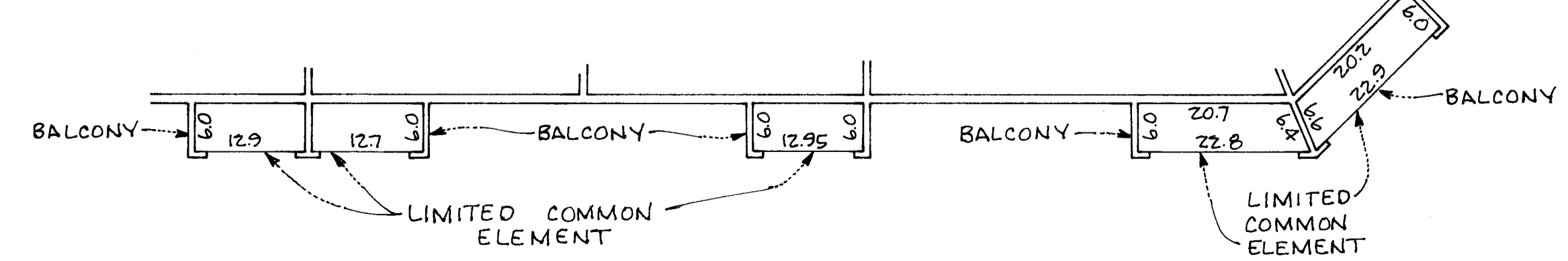
SECOND FLOOR LEVEL :

SECOND FLOOR ELEVATIONS:

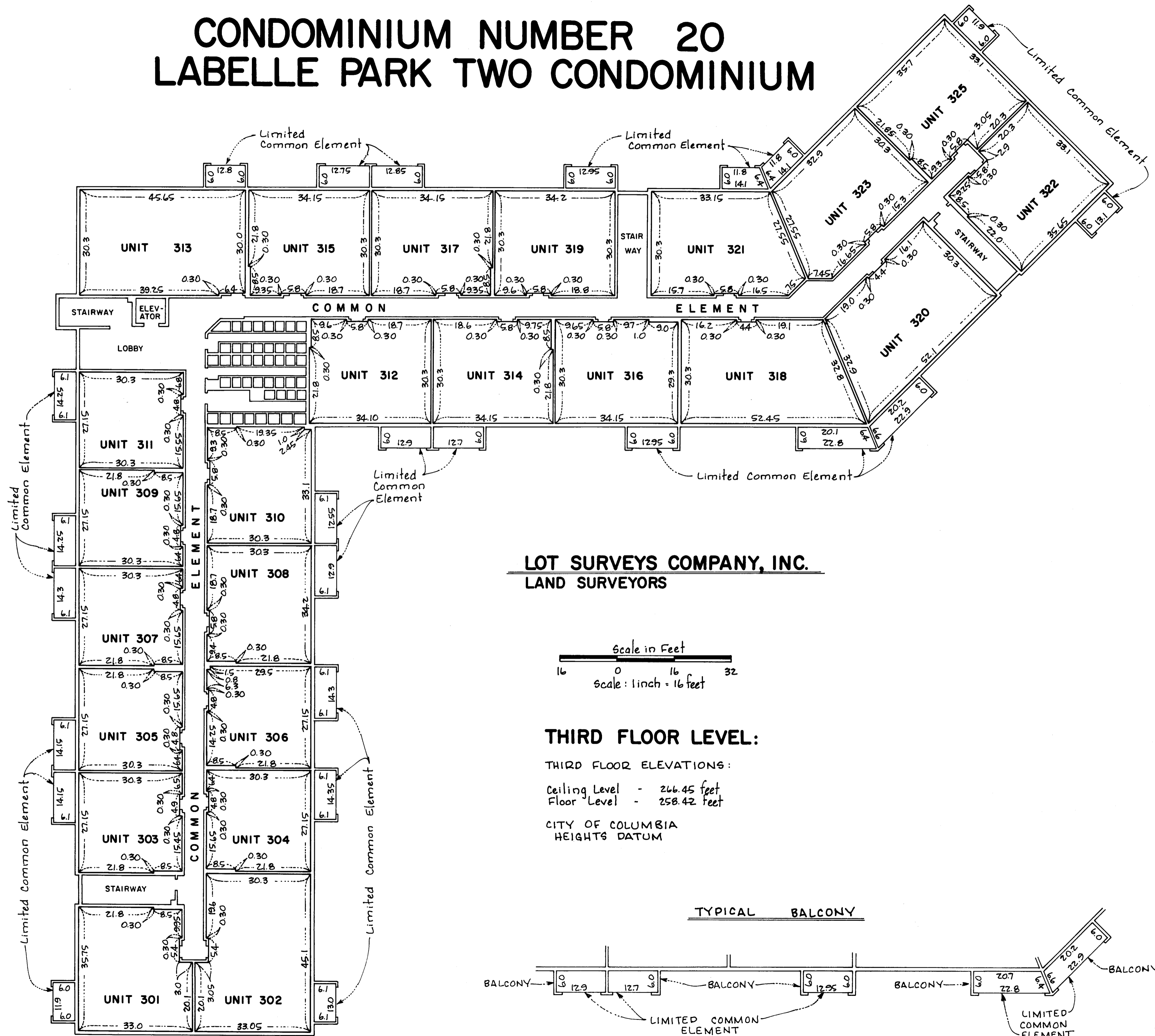
Ceiling Level - 257.48 feet
Floor Level - 249.44 feet

CITY OF COLUMBIA
HEIGHTS DATUM.

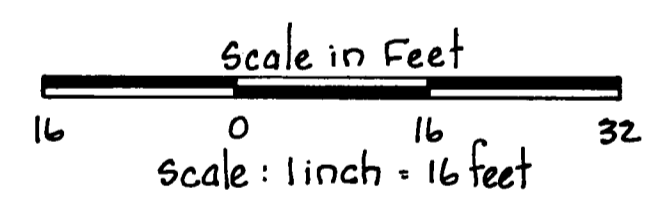
TYPICAL BALCONY



CONDOMINIUM NUMBER 20 LABELLE PARK TWO CONDOMINIUM



LOT SURVEYS COMPANY, INC.
LAND SURVEYORS



THIRD FLOOR LEVEL:

THIRD FLOOR ELEVATIONS:

Ceiling Level - 266.45 feet
Floor Level - 258.42 feet

CITY OF COLUMBIA
HEIGHTS DATUM

TYPICAL BALCONY

