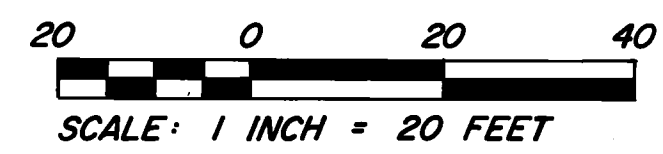


These Floor Plans are part of Declaration Document No. 130054 filed on the 15th day of November 1983.  
 Anoka County Registrar of Titles  
 Registered Vol. 167 Page 297

# CONDOMINIUM NUMBER 23 OAKWOOD CONDOMINIUMS, A CONDOMINIUM

## SITE PLAN



o DENOTES IRON MONUMENT  
 LCE = Limited Common Element  
 CE = Common Element

For the purposes of this condominium the South line of Lot 14, Block 21, is assumed to have a bearing of West.

Benchmark: Top nut of Hydrant at the Northwest Quad, Second Avenue and Jefferson Street.  
 Elevation: 846.59 feet (N.G.V.D. 1929)

The undersigned, being first duly sworn under oath, certifies and deposes that these Floor plans of CONDOMINIUM NUMBER 23, OAKWOOD CONDOMINIUMS, A CONDOMINIUM, being located upon

Lot 14, and that part of Lot 15, Block 21, Town, now City of Anoka, according to the map or plat thereof on file and of record in the office of the Register of Deeds in and for Anoka County, Minnesota, described as follows, to-wit:  
 Commencing at the Southwest corner of said Lot 15; thence North along the West line of said Lot 15 to the Northeast corner of said Lot 14; thence East along the extended North line of said Lot 14 a distance of 13 feet; thence South and parallel with the East line of said Lot 15 a distance of 66 feet, more or less to the South line of said Lot 15; thence West on the South line of said Lot 15 to the place of commencement.

fully and accurately depicts all information required by Minnesota Statutes Section 515A. 2-110. Dated this 8th day of September 1983.

Richard H. Cherrier  
 Richard H. Cherrier, Registered Land Surveyor  
 Minnesota Registration Number 9064

State of Minnesota  
 County of Hennepin

The foregoing instrument was acknowledged before me this 8th day of September 1983 by Richard H. Cherrier, a registered professional land surveyor.

Donald W. Bishman  
 DONALD W. BISHMAN  
 NOTARY PUBLIC - MINNESOTA  
 HENNEPIN COUNTY  
 My Commission Expires Oct. 20, 1988

Donald W. Bishman  
 Notary Public, Hennepin County, Minnesota  
 My commission expires October 20, 1988

I, Roger W. Nelson a registered professional Engineer for the State of Minnesota pursuant to Minnesota Statutes Section 515A. 2-101 (b) and (c) does hereby certify that all structural components and mechanical systems serving more than one unit of all buildings containing or comprising any units hereby created are substantially completed consistent with the Floor Plans for CONDOMINIUM NUMBER 23, OAKWOOD CONDOMINIUMS, A CONDOMINIUM, and that all the units are entirely completed consistent with said Floor Plans.

Dated 8th day of September 1983.

Roger W. Nelson  
 Registered Engineer  
 Minnesota Registration Number 14389

State of Minnesota  
 County of Hennepin

The foregoing instrument was acknowledged before me this 8th day of September 1983 by Roger W. Nelson a registered professional Engineer.

Donald W. Bishman  
 DONALD W. BISHMAN  
 NOTARY PUBLIC - MINNESOTA  
 HENNEPIN COUNTY  
 My Commission Expires Oct. 20, 1988

Donald W. Bishman  
 Notary Public, Hennepin County, Minnesota  
 My commission expires October 20, 1988

Checked and approved this 9th day of September 1983.

Robert W. Anderson  
 Anoka County Surveyor

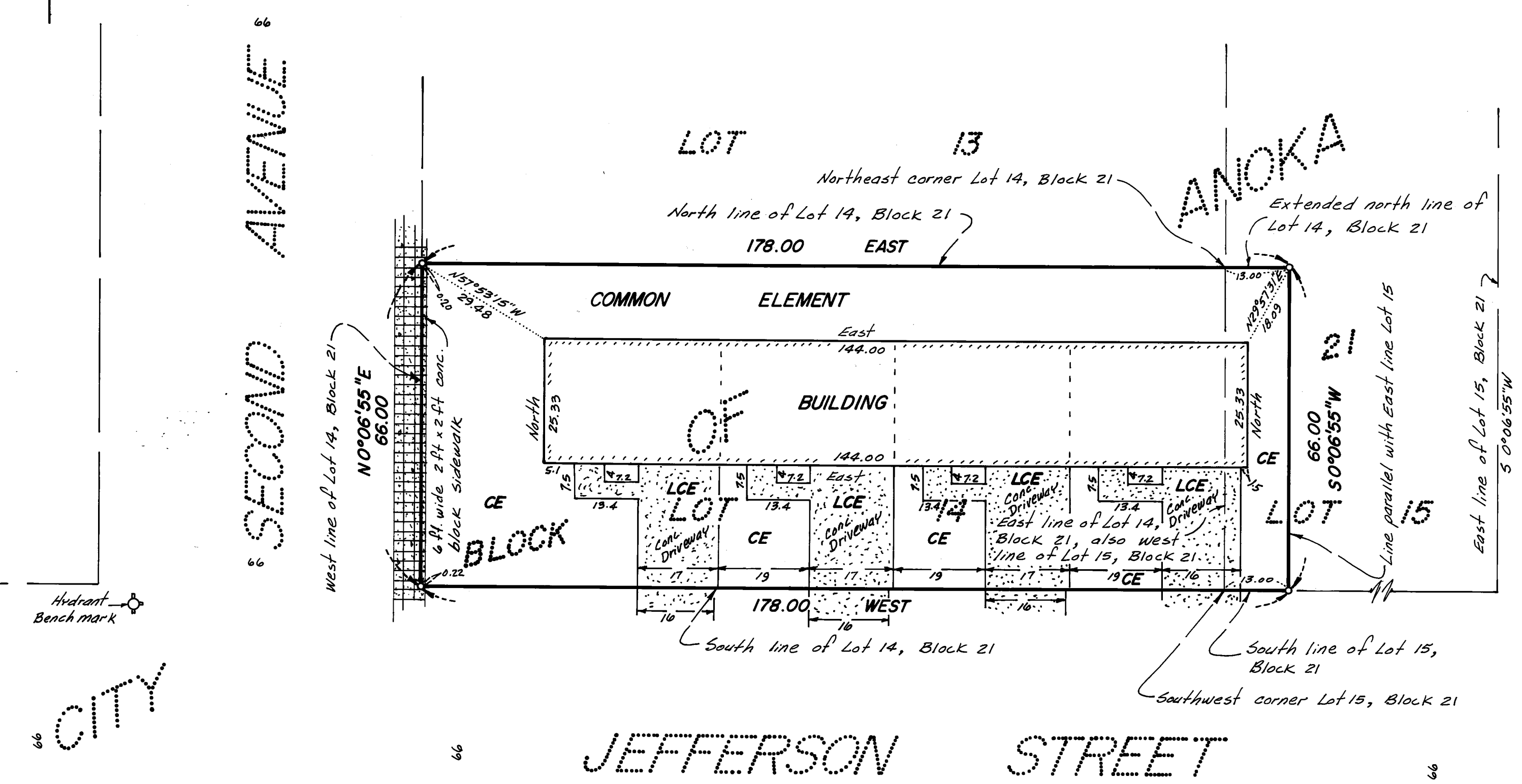
"NO DELINQUENT TAXES AND TRANSFER ENTERED"

Nov 16th 1983

Charles L. Miller  
 Auditor, Anoka County

BY [Signature]  
 Deputy

I HEREBY CERTIFY THAT THE TAXES PAYABLE IN THE YEAR 1983 ON THE LANDS DESCRIBED WITHIN ARE PAID.  
Donald C. Bailey by G. Williams  
 Anoka County Treasurer



Hydrant  
 Benchmark

CITY

**CHERRIER - WINTER & ASSOCIATES, INC.**  
 REGISTERED PROFESSIONAL LAND SURVEYORS

MPD 08619 MW 1583

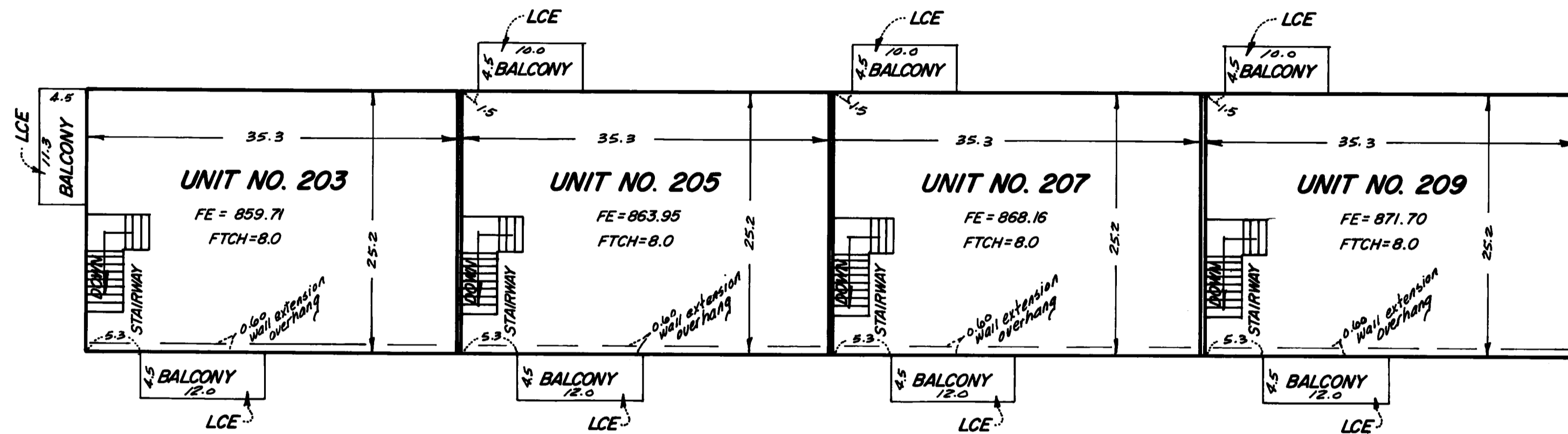
1550.. SHEET 1 OF 2 SHEETS

130054  
 Office of REGISTRAR OF TITLES  
 STATE OF MINNESOTA  
 COUNTY OF ANOKA  
 I hereby certify that the within instrument was filed in this office on the 15th day of NOV 15 1983 at 10:35 o'clock A.M.  
Richard H. Cherrier Registrar of Titles  
 By [Signature] DEPUTY REGISTRAR OF TITLES

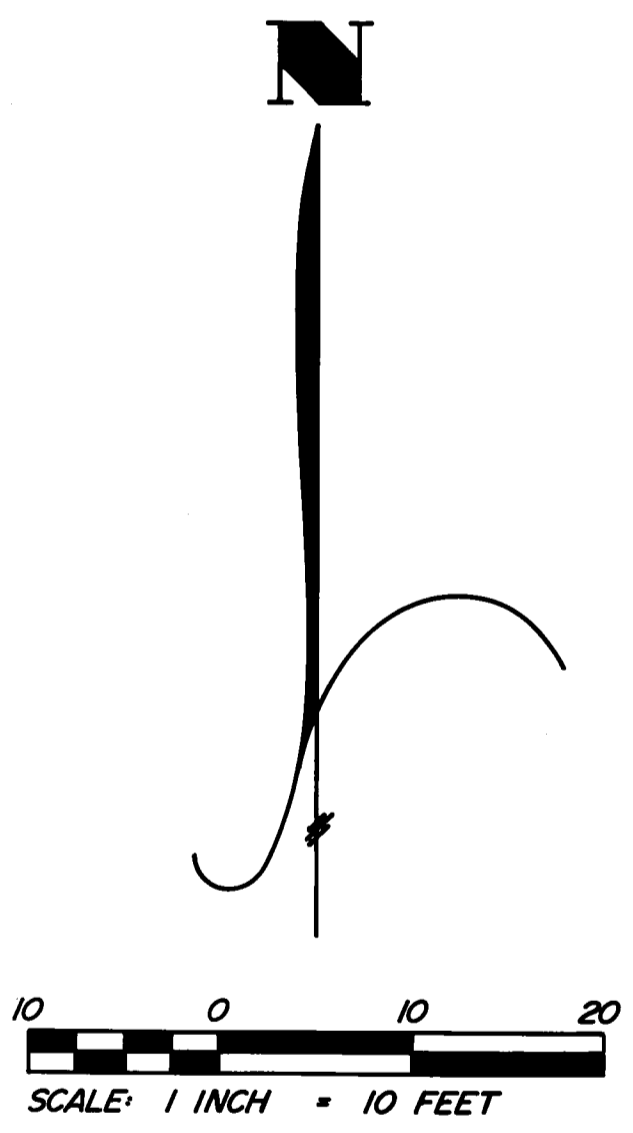
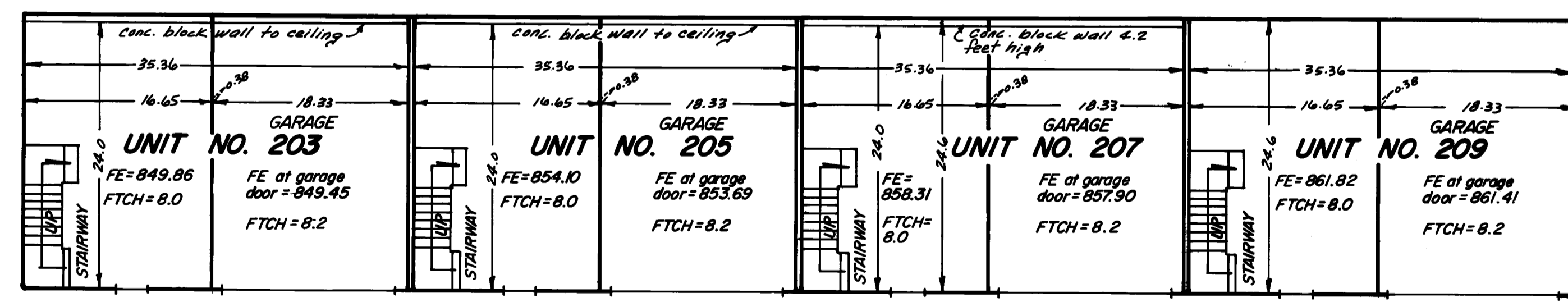
# CONDOMINIUM NUMBER 23 OAKWOOD CONDOMINIUMS, A CONDOMINIUM

## FLOOR PLAN

### UPPER LEVEL



### LOWER LEVEL



LCE = Limited Common Element  
 FTCH = Floor To Ceiling Height  
 FE = Floor Elevation