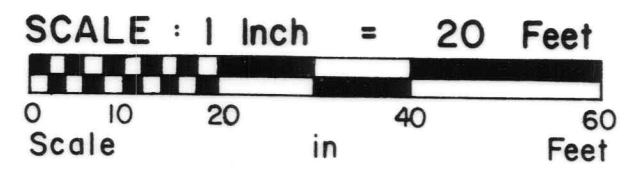


CONDOMINIUM NUMBER 26 POST OFFICE CONDOMINIUM

These Floor Plans are part of the Declaration filed or recorded as Document No. 632287 on the 30TH day of DECEMBER A.D., 1983.

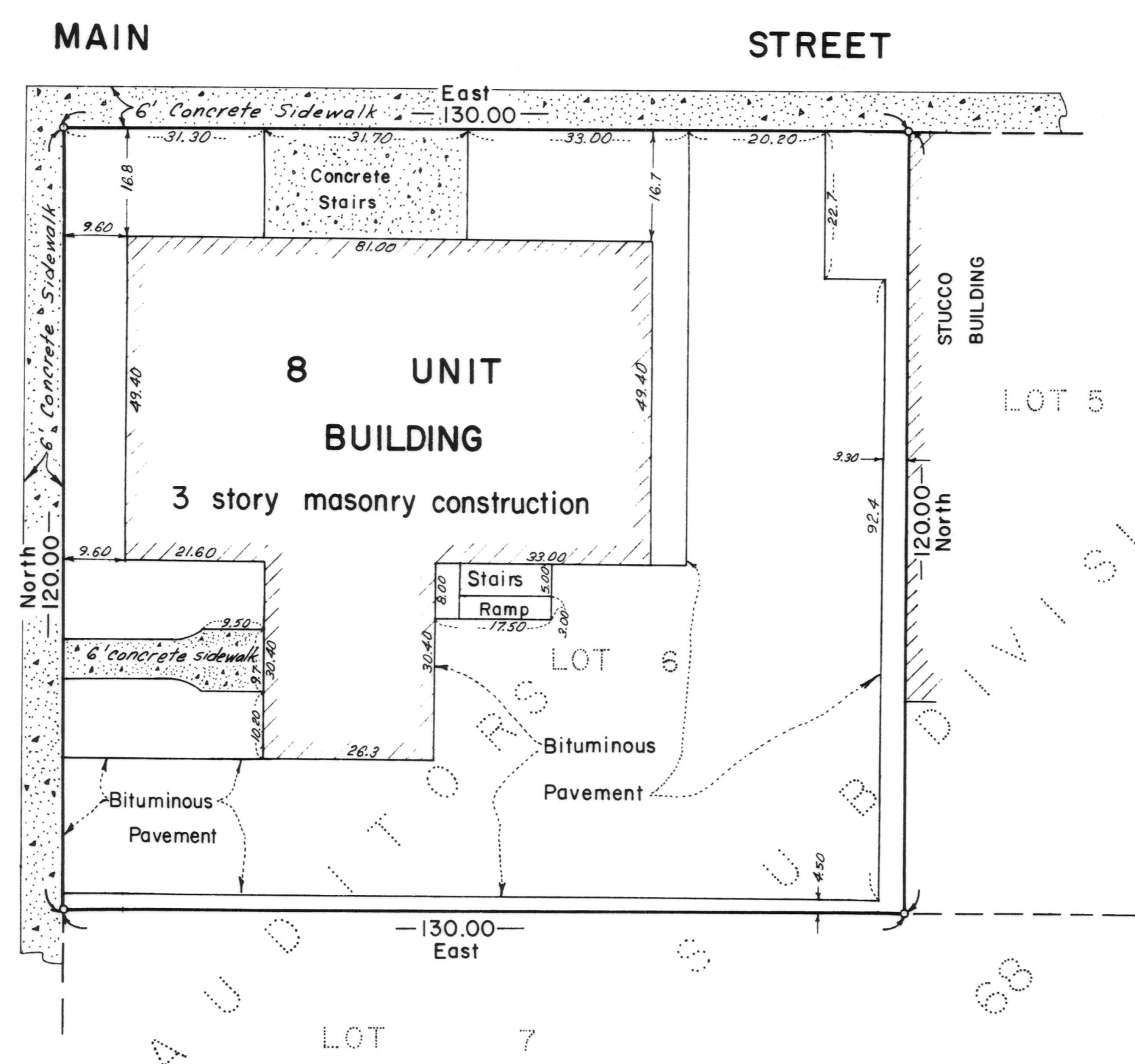
The North line of Lot 6, Block 14, AUDITORS SUBDIVISION NO. 68 has an assumed bearing of East.

o Denotes Iron Monument



BENCHMARK: Top of step at North entrance to East Wing of Anoka County Courthouse Elevation = 880.12 N.G.V.D.

THIRD AVENUE



SITE PLAN NO.

The undersigned, being first duly sworn under oath certifies and deposes that these Floor Plans of Condominium No. 26, Post Office Condominium, being located upon Lot 6, Block 14, Auditor's Subdivision No. 68, Anoka County, Minnesota, fully and accurately depicts all information required by Minnesota Statutes Section 515A, 2-110. Dated this 30th day of November, 1983.

Ernest G. Rud
Ernest G. Rud, Registered Land Surveyor
Minnesota Registration No. 9808

State of Minnesota)
County of Anoka)
The foregoing instrument was acknowledged before me this 30th day of November, 1983, by Ernest G. Rud, a registered land surveyor.



Marian E. Rud
Notary Public, Anoka County, Minnesota
My Commission Expires May 23, 1984

Checked and approved this 30th day of December, 1983.

Roland W. Anderson
Roland W. Anderson
Anoka County Surveyor

Dennis E. Brown, a registered professional engineer for the State of Minnesota pursuant to Minnesota Statutes Section 515.2-101(b) and (c), do hereby certify that all structural components and mechanical systems serving more than one unit of all buildings containing or comprising any units hereby created are substantially completed consistent with the Floor Plans for CONDOMINIUM NUMBER 26 POST OFFICE CONDOMINIUM, and that all the units are entirely completed consistent with said Floor Plans.

Dated this 30th day of November, 1983.

Dennis E. Brown
Dennis E. Brown, a Engineer Minn. Reg. No. 7442

State of Minnesota)
County of Anoka)
The foregoing instrument was acknowledged before me this 30th day of November, 1983, by Dennis E. Brown a registered professional engineer.



Marian E. Rud
Notary Public, Anoka County, Minnesota
My Commission expires May 23, 1984

E.G. RUD & SONS, INC.
LAND SURVEYORS

632287

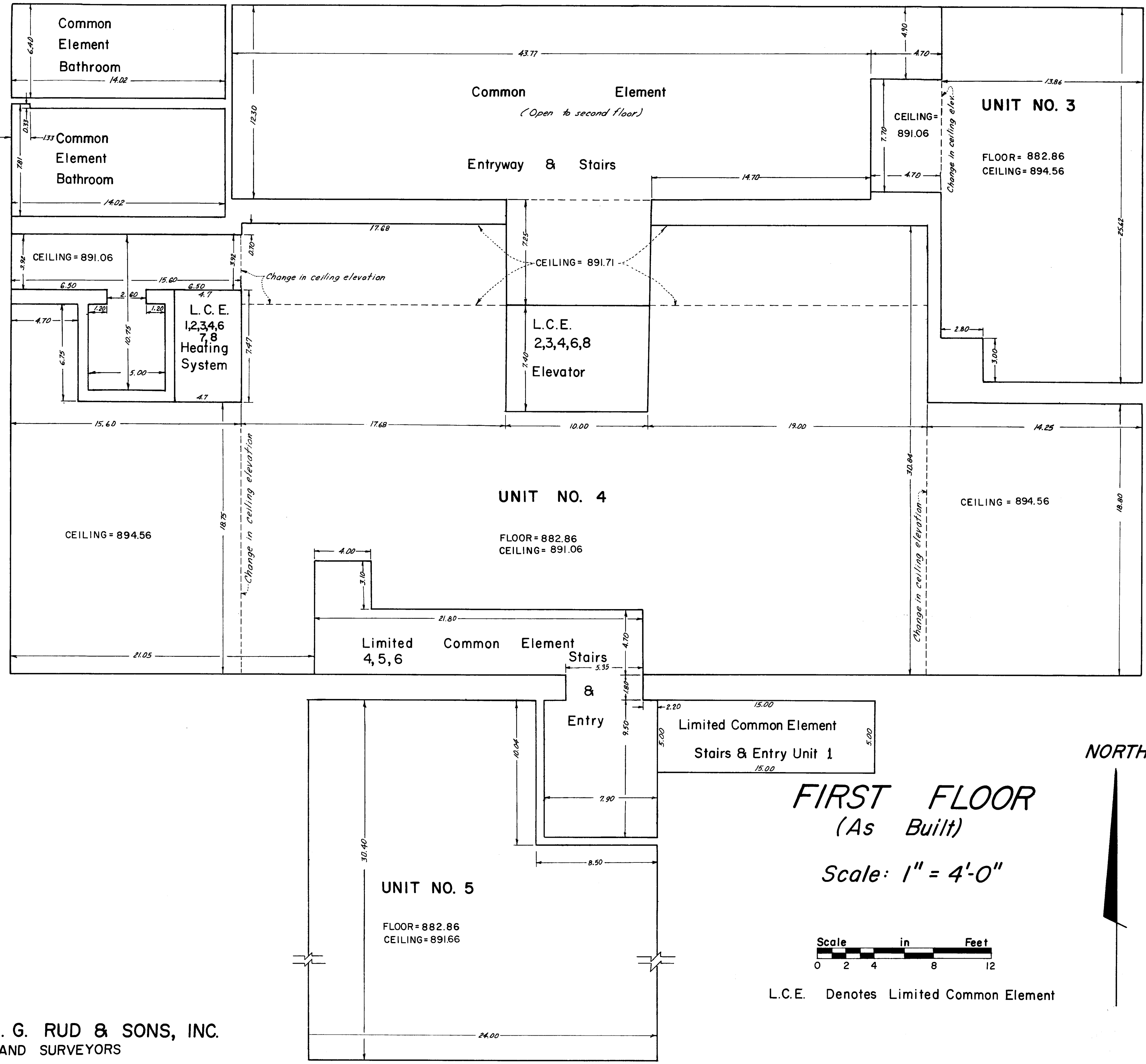
OFFICE OF COUNTY RECORDER
STATE OF MINNESOTA, COUNTY OF ANOKA
I hereby certify that the within instrument was filed in this office for record on the DEC 30 1983 A.D., 1983 at 11:45 o'clock AM, and was duly recorded in book 1 of page 29 CONDOMINIUMS
Ed J. Cundall
County Recorder
P. F. Golden
Deputy

"NO DELINQUENT TAXES AND TRANSFER ENTERED"
Dec 30 1983
Chas. R. Spilner
Auditor, Anoka County
By P. P. Kaminski
Deputy

NOV 19 9 75 DEC 30 83 55.00

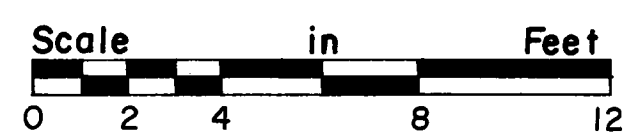
I HEREBY CERTIFY THAT THE TAXES PAYABLE IN THIS COUNTY ON THE LANDS DESCRIBED HEREIN ARE
Donald C. Bailey
Anoka County Treasurer
G. Henry Leggett

CONDOMINIUM NUMBER 26 POST OFFICE CONDOMINIUM



FIRST FLOOR
(As Built)

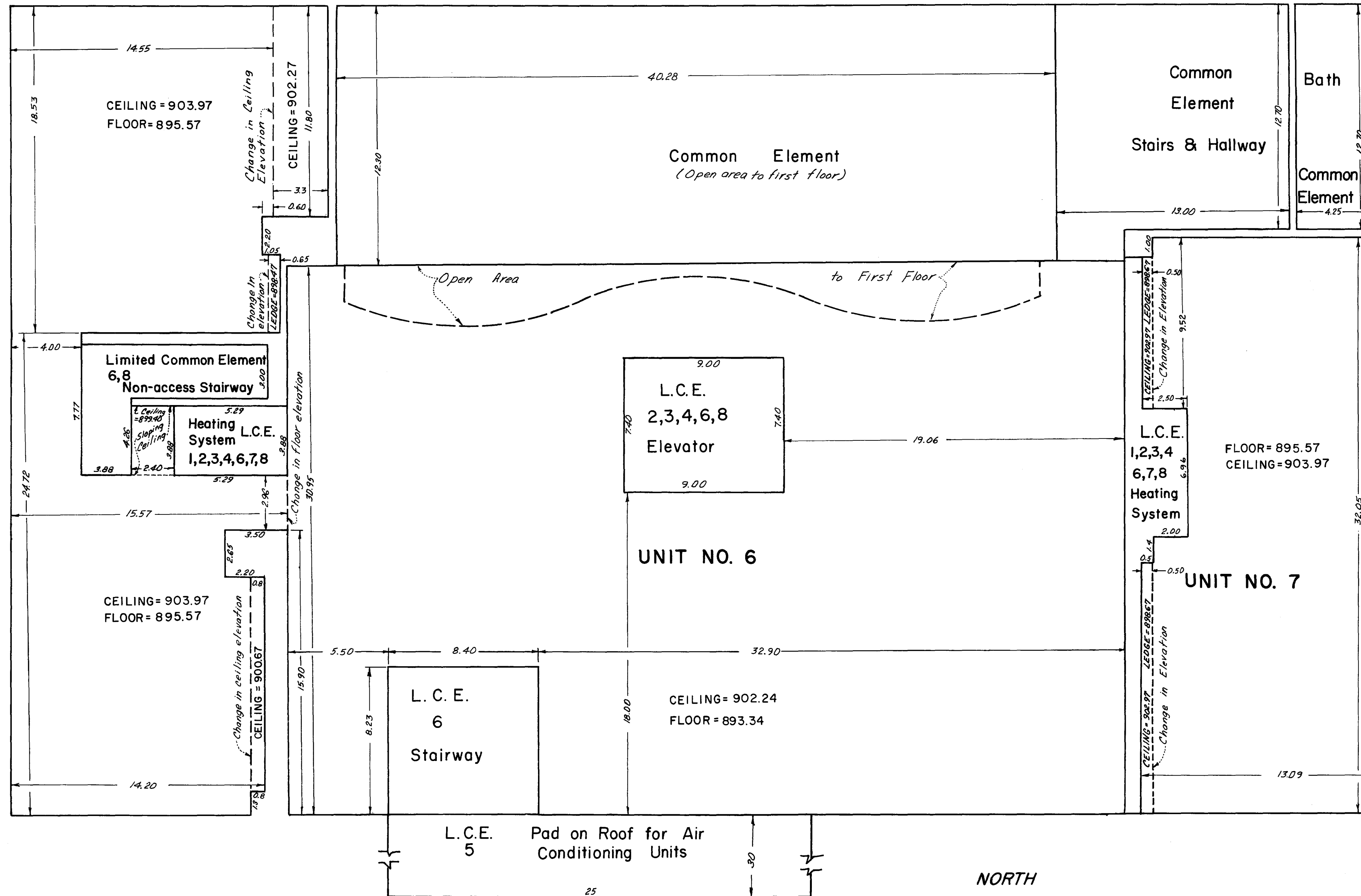
Scale: 1" = 4'-0"



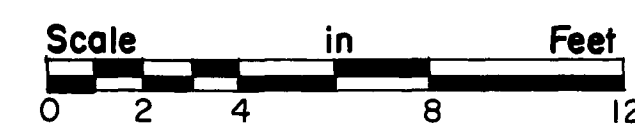
L.C.E. Denotes Limited Common Element

E. G. RUD & SONS, INC.
LAND SURVEYORS

CONDOMINIUM NUMBER 26 POST OFFICE CONDOMINIUM



SECOND FLOOR (As Built)

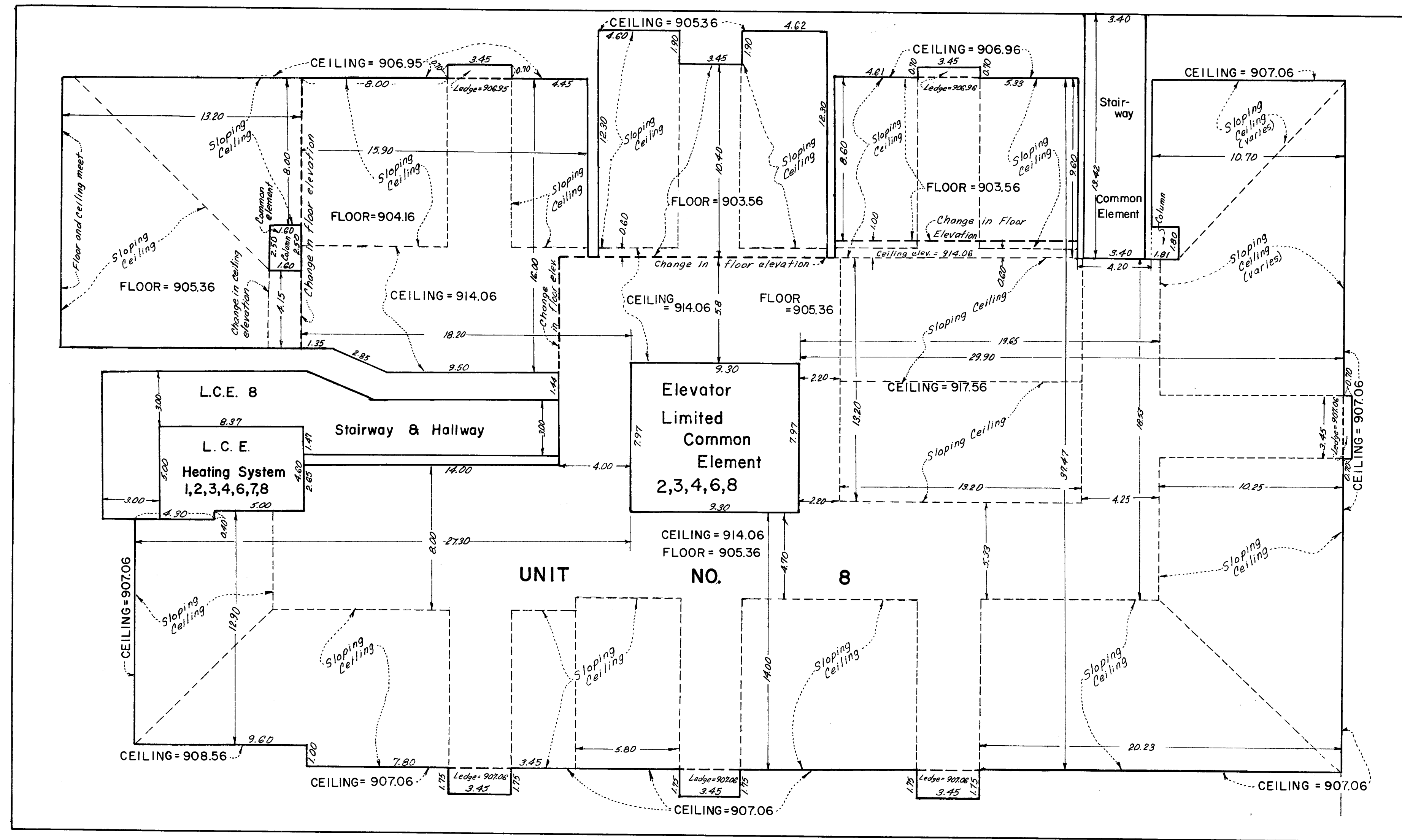


Scale: 1" = 4'-0"

L.C.E. Denotes Limited Common Element

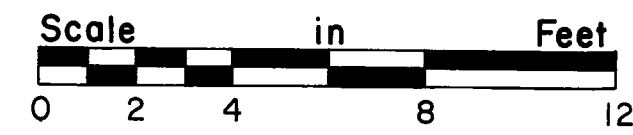
E.G. RUD & SONS, INC.
LAND SURVEYORS

CONDOMINIUM NUMBER 26 POST OFFICE CONDOMINIUM



NORTH

THIRD FLOOR (As Built)



Scale: 1" = 4'

L.C.E. Denotes Limited Common Element
----- Denotes Change in Ceiling Elevation

E. G. RUD & SONS, INC.
LAND SURVEYORS