

City of Fridley Anoka County, Minnesota

CONDOMINIUM NUMBER 27

BLACK FOREST CONDOMINIUM

625193
 OFFICE OF COUNTY RECORDER
 STATE OF MINNESOTA, COUNTY OF ANOKA
 I hereby certify that the within instrument was filed in this office for record on the OCT 4, 1983 A.D., 1983 at 1:30 o'clock P.M., and was duly recorded in book 109 page 26 CONDOMINIUMS
 By Red J. Omdahl County Recorder
A. W. Swanson Deputy

These Floor Plans are Part of Declaration Document No. 625193 Filed on the 4th day of Oct. A.D. 1983, Anoka County Recorder

I HEREBY CERTIFY THAT THE TAXES PAYABLE IN THE YEAR 1983 ON THE LANDS DESCRIBED WITHIN ARE PAID
 By Donald C. Baum Anoka County Treasurer

North line of the Southeast Quarter of Section 24, Township 30, Range 24, also being the north line of Outlot A, INNSBRUCK NORTH
 S. 88° 20' 49" E.
 833.65

The undersigned being first duly sworn under oath, certifies and deposes that this site plan of Condominium Number 27, BLACK FOREST CONDOMINIUM being located upon

Outlot A, Innsbruck Villages, Anoka County, Minnesota, and Outlot A, Innsbruck North, Anoka County, Minnesota, except that part legally described as follows:

Beginning at the most westerly corner of said Outlot A, Innsbruck North; thence North 46 degrees 39 minutes 11 seconds East along the westerly line of said Outlot A, Innsbruck North, a distance of 160 feet; thence South 1 degree 39 minutes 11 seconds West a distance of 226.27 feet more or less to a point in the westerly line of said Outlot A Innsbruck North, distant 160 feet southeasterly along said line from the point of beginning; thence northwesterly along said line to the point of beginning.

fully and accurately depicts all information required by Minnesota Statutes Section 515 A 2-110 (b) (1), (2), and (3) through (7) inclusive. Dated this 29th day of SEPT., 1983.

Howard W. Rogers
 Howard W. Rogers, Registered Land Surveyor
 Minnesota License No. 10945

STATE OF MINNESOTA The foregoing instrument was acknowledged before me this 29th day of September, 1983 by Howard W. Rogers, a Registered Land Surveyor.



Marietta L. Zuehlke
 Notary Public, Anoka County, Minnesota
 My Commission Expires April 14, 1984

The undersigned being first duly sworn under oath, certifies and deposes, that these floor plans of Condominium Number 27, BLACK FOREST CONDOMINIUM being located upon

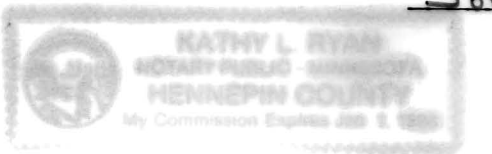
Outlot A, Innsbruck Villages, Anoka County, Minnesota, and Outlot A, Innsbruck North, Anoka County, Minnesota, except that part legally described as follows:

Beginning at the most westerly corner of said Outlot A, Innsbruck North; thence North 46 degrees 39 minutes 11 seconds East along the westerly line of said Outlot A, Innsbruck North, a distance of 160 feet; thence South 1 degree 39 minutes 11 seconds West a distance of 226.27 feet more or less to a point in the westerly line of said Outlot A Innsbruck North, distant 160 feet southeasterly along said line from the point of beginning; thence northwesterly along said line to the point of beginning.

fully and accurately depicts all the information required by Minnesota Statutes Section 515 A 2-110 (b) (3) and (8) through (11), inclusive. Dated this 24th day of AUGUST 1983.

John T. Klick
 JOHN T. KLICK, Registered Professional ARCHITECT
 Minnesota License No. 11280

STATE OF MINNESOTA The foregoing instrument was acknowledged before me COUNTY OF Hennepin this 24th day of August, 1983 by John T. Klick, a Registered Professional Architect.



Kathy L. Ryan
 Notary Public, Hennepin County, Minnesota
 My Commission Expires 1-1-88

John T. Klick, a Registered Professional ARCHITECT for the State of Minnesota, pursuant to Minnesota Statutes Section 515A. 2-101 (b) and (c) does hereby certify that all units and all structural components and mechanical system serving more than one unit of all buildings containing or comprising any units hereby created are substantially completed consistent with the Floor plans for Condominium Number 27, BLACK FOREST CONDOMINIUM, and that all the units are entirely completed consistent with said floor plans. Dated this 24th day of AUGUST, 1983.

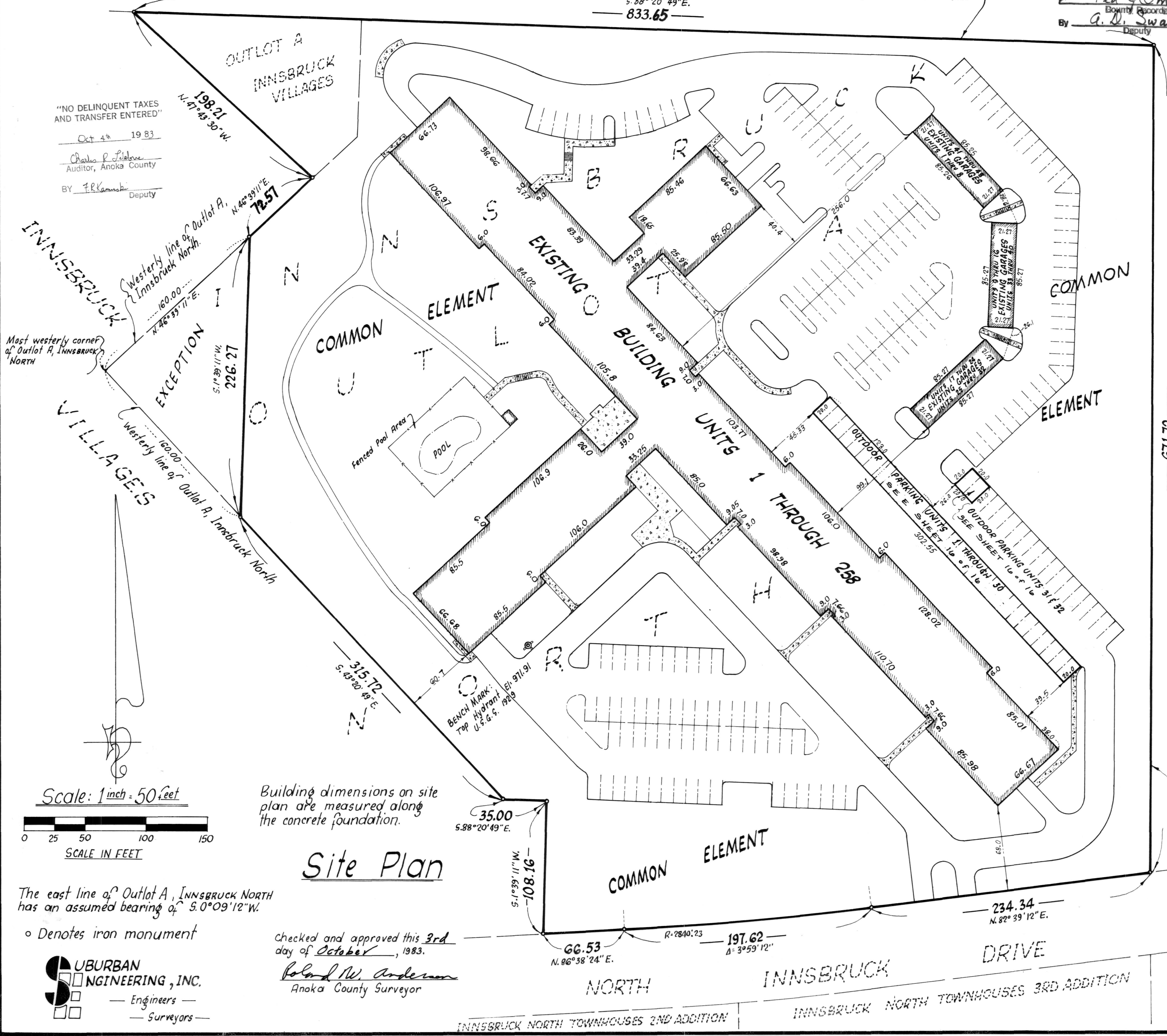
John T. Klick
 JOHN T. KLICK, Registered Professional ARCHITECT
 Minnesota License No. 11280

STATE OF MINNESOTA COUNTY OF Hennepin

The foregoing instrument was acknowledged before me this 24th day of August, 1983, by John T. Klick, a Registered Professional Architect.



Kathy L. Ryan
 Notary Public, Hennepin County, Minnesota
 My Commission Expires 1-1-88



Building dimensions on site plan are measured along the concrete foundation.

Site Plan

Checked and approved this 3rd day of October, 1983.
Roland W. Anderson
 Anoka County Surveyor

The east line of Outlot A, INNSBRUCK NORTH has an assumed bearing of 5.0° 09' 12" W.

o Denotes iron monument

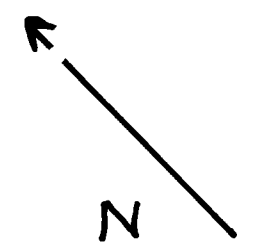
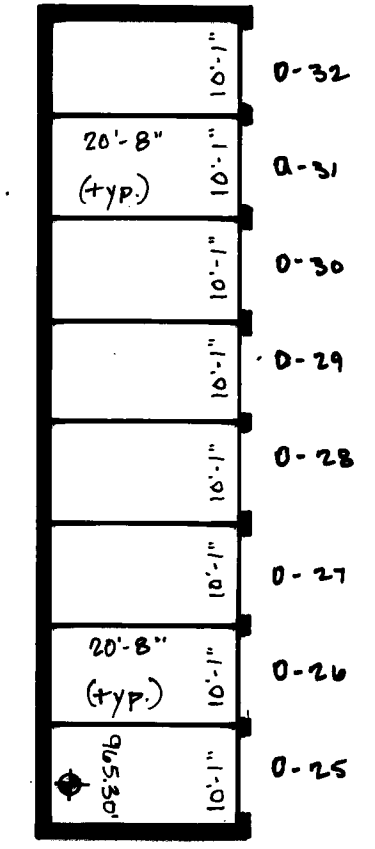
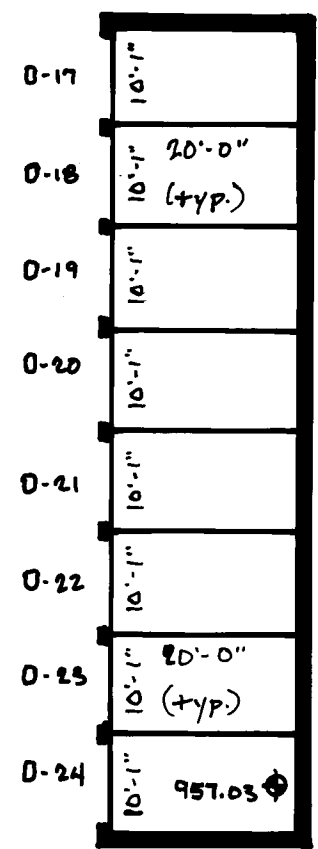
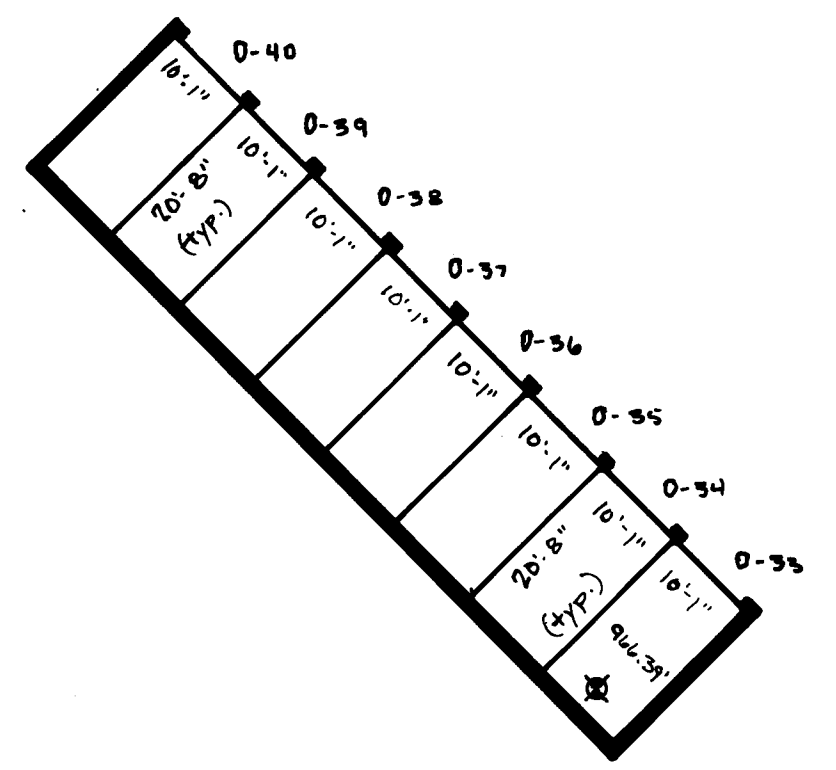
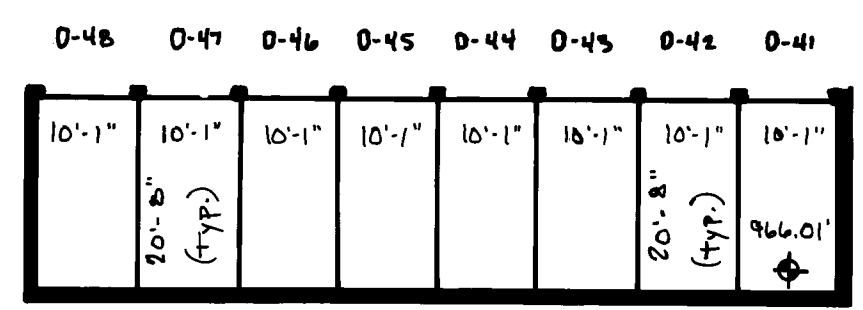
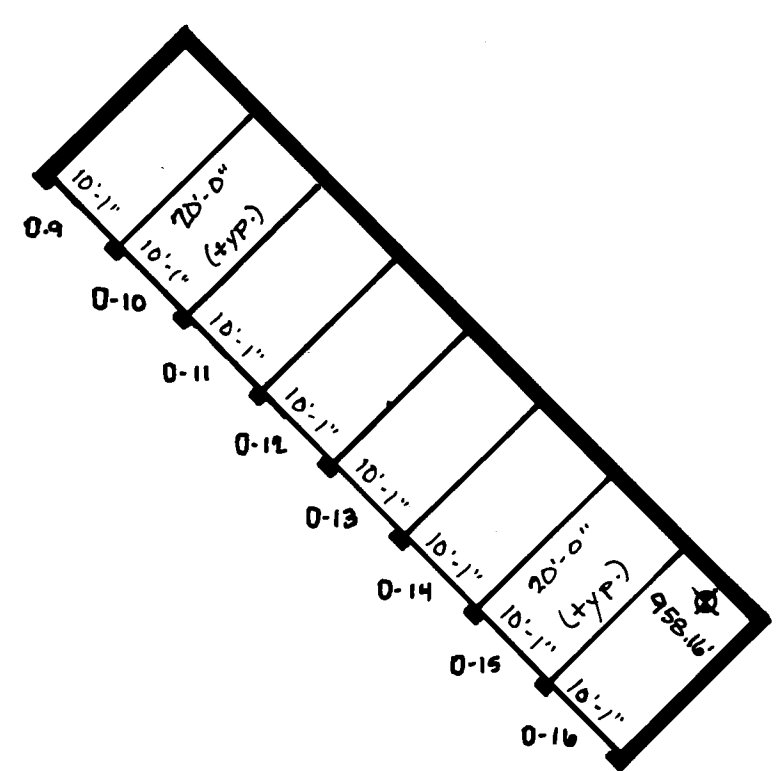
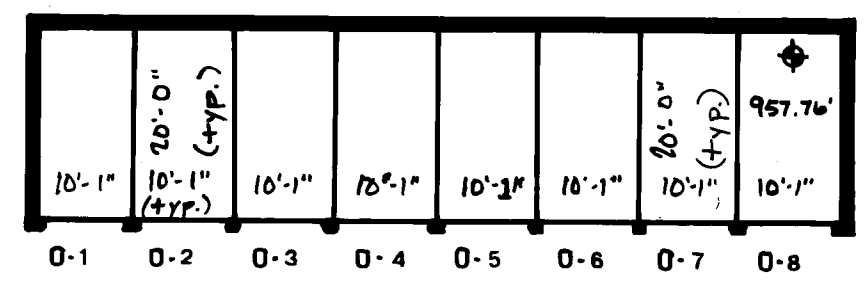
SUBURBAN ENGINEERING, INC.
 Engineers
 Surveyors

East line of the Southeast Quarter of Section 24, Township 30, Range 24, also being the East line of Outlot A, INNSBRUCK NORTH.
 671.72
 S. 0° 09' 12" W.
 5.0° 09' 12" W.

FILE NO.

CONDOMINIUM NUMBER 27
BLACK FOREST CONDOMINIUM

FILE NO



OUTDOOR GARAGE A
FTCH 7.5'

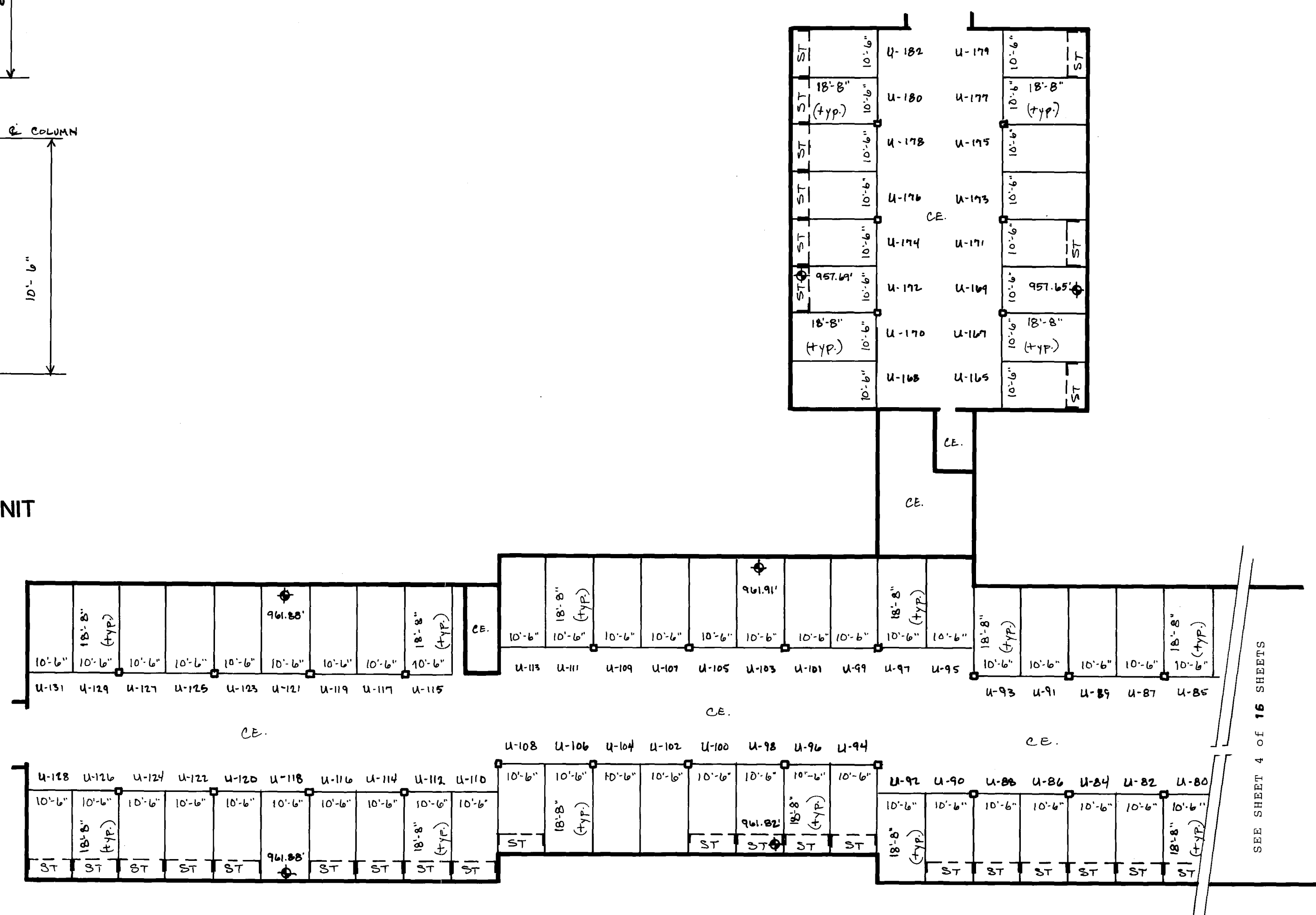
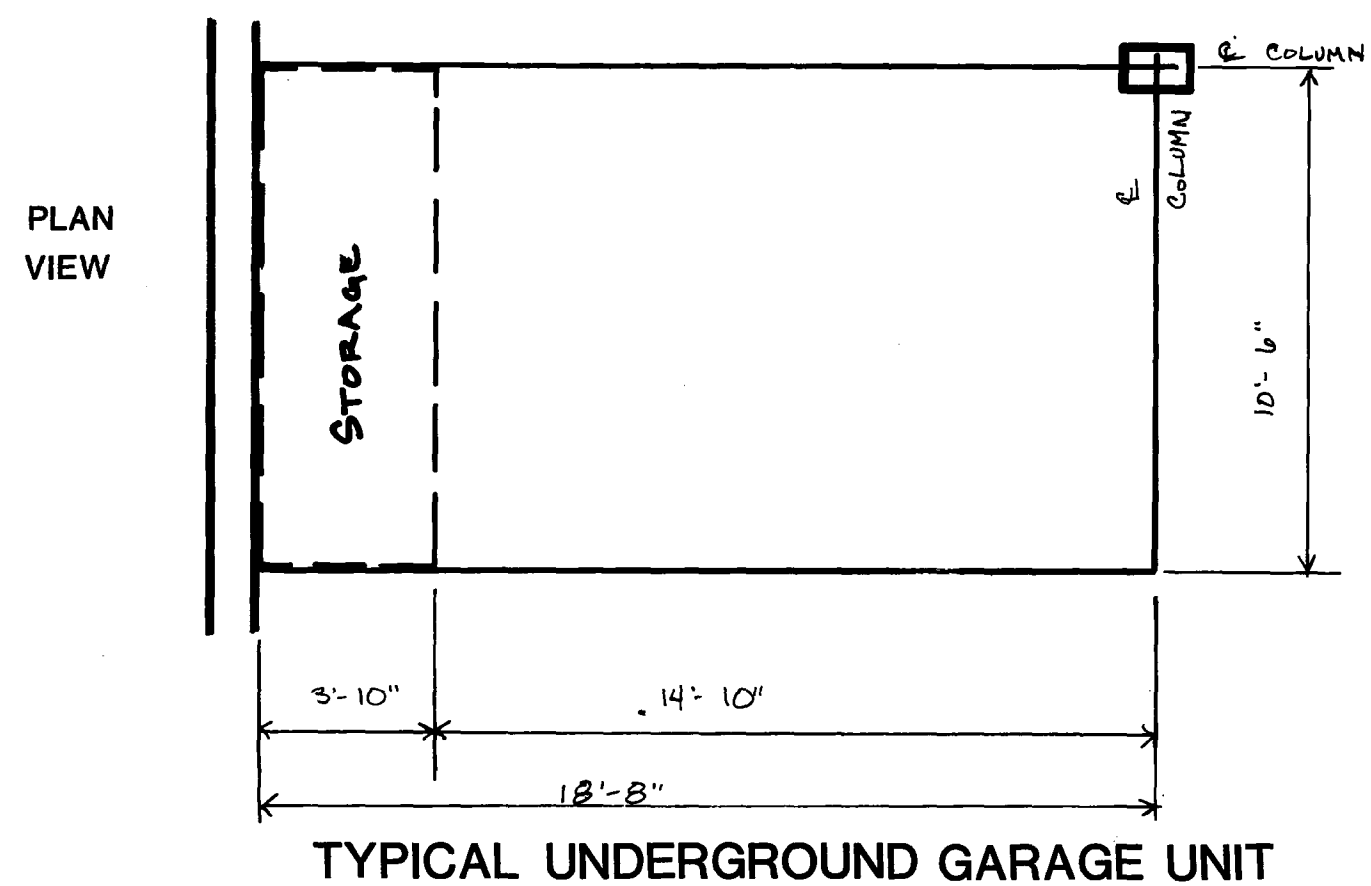
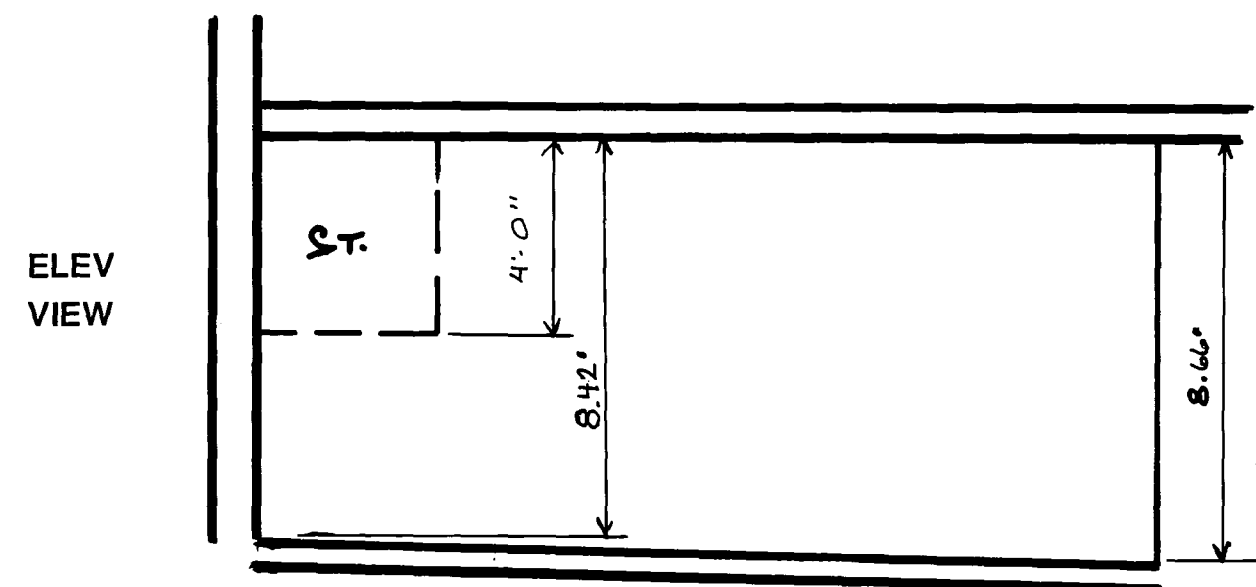
SCALE IN FEET

OUTDOOR GARAGE B
FTCH 7.5'

SCALE IN FEET

FTCH FLOOR TO CEILING HEIGHT

Elevations shown are referenced to benchmark on site plan page 1 of 16.

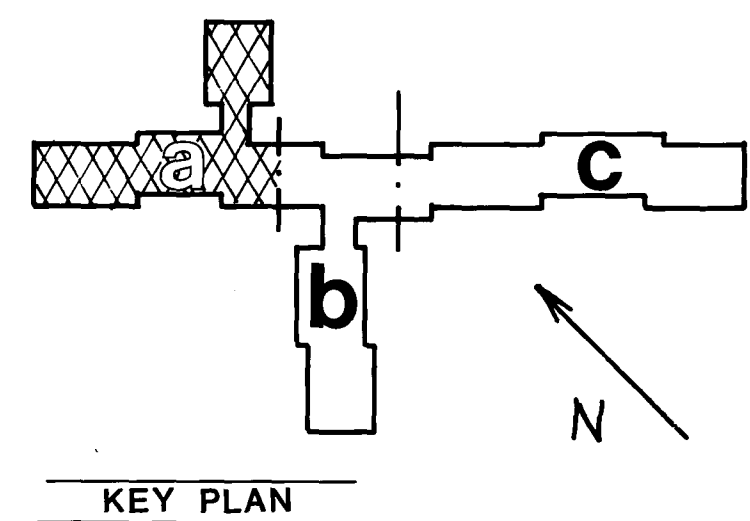


SEE SHEET 4 OF 16 SHEETS

GARAGE SECTION-A
 FTCH VARIES FROM 8'-42" TO 8'-66" IN GARAGE UNITS.



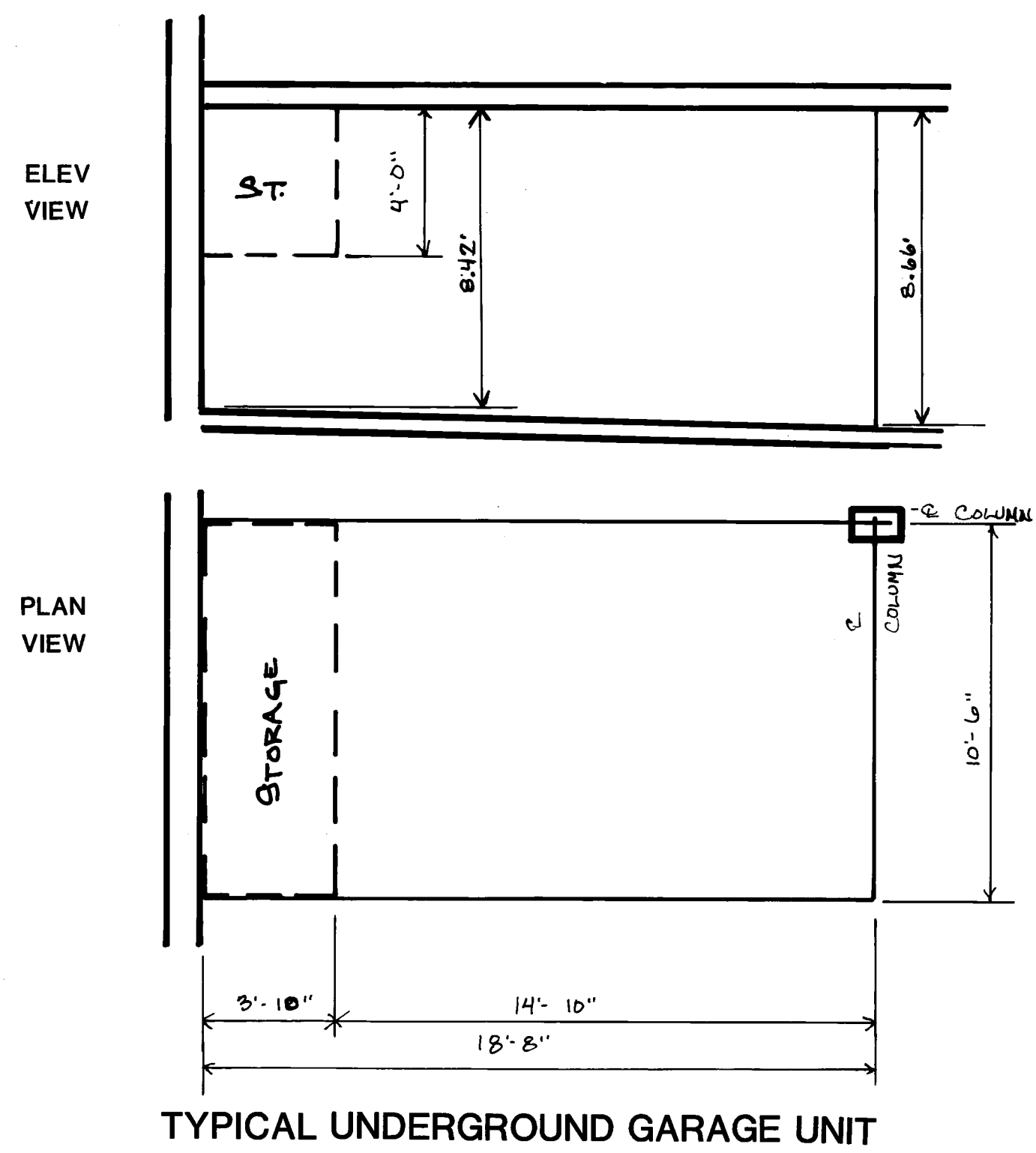
- FTCH FLOOR TO CEILING HEIGHT
- CE COMMON ELEMENT
- LCE LIMITED COMMON ELEMENT
- ST STORAGE



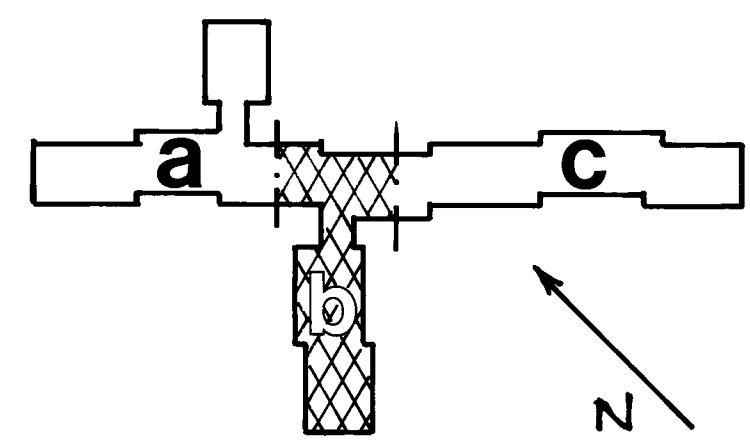
Elevations shown are referenced to benchmark on site plan page 1 of 16.

FILE NO

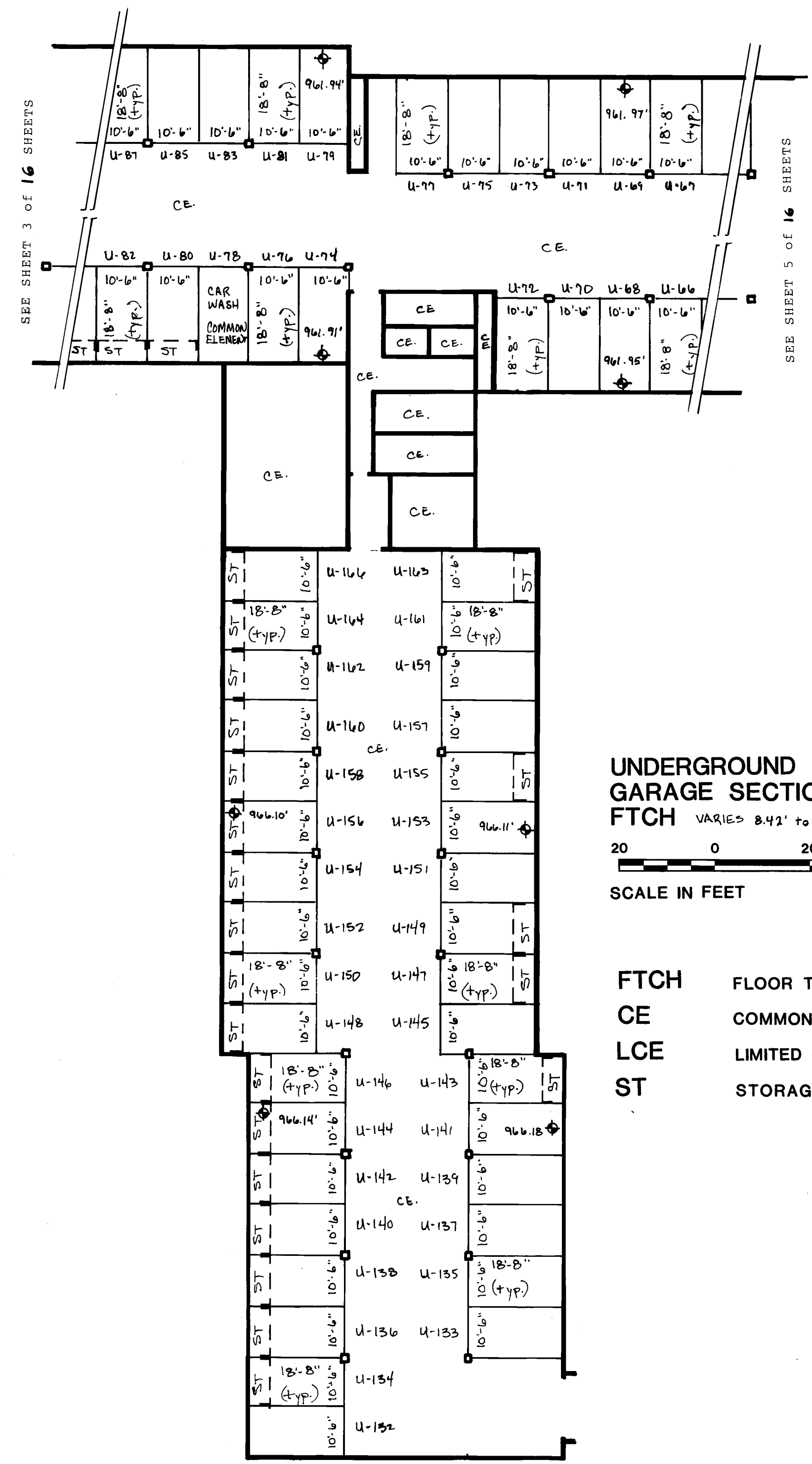
FILE NO



TYPICAL UNDERGROUND GARAGE UNIT



KEY PLAN



UNDERGROUND GARAGE SECTION-B
 FTCH VARIES 8.42' TO 8.66' IN GARAGE UNITS

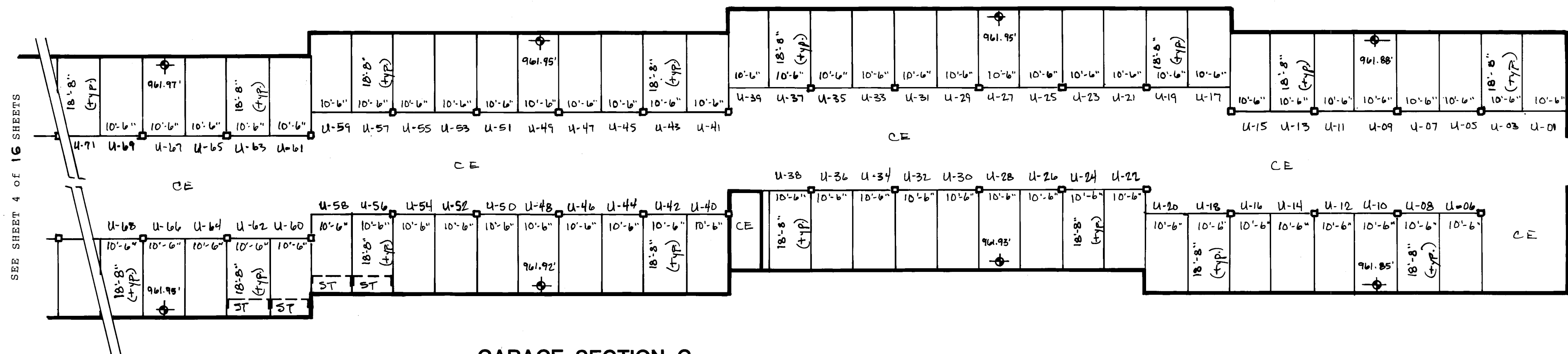


- FTCH FLOOR TO CEILING HEIGHT
- CE COMMON ELEMENT
- LCE LIMITED COMMON ELEMENT
- ST STORAGE

Elevations shown are referenced to benchmark on site plan page 1 of 16.

CONDOMINIUM NUMBER 27
BLACK FOREST CONDOMINIUM

FILE NO

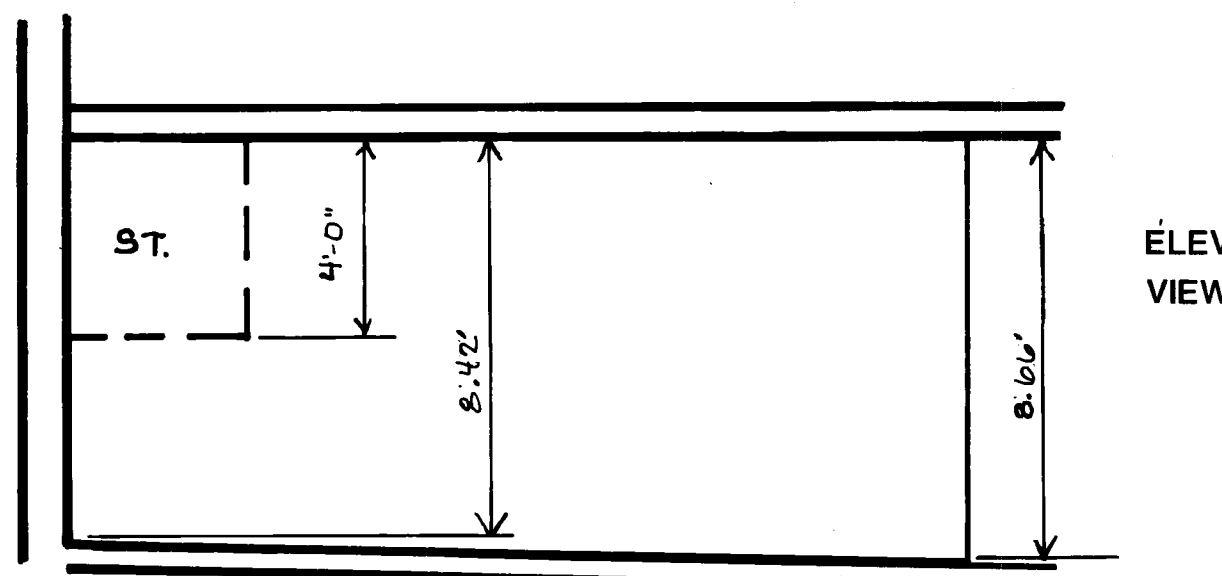


GARAGE SECTION-C
FTCH VARIES FROM 8.42' TO 8.66' IN GARAGE UNITS.

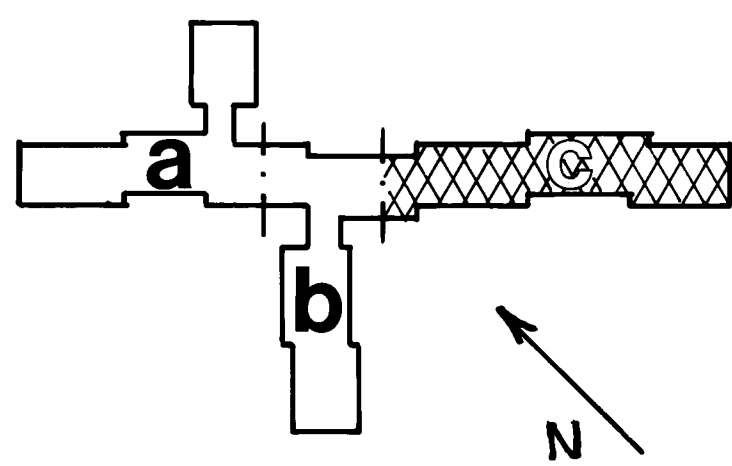
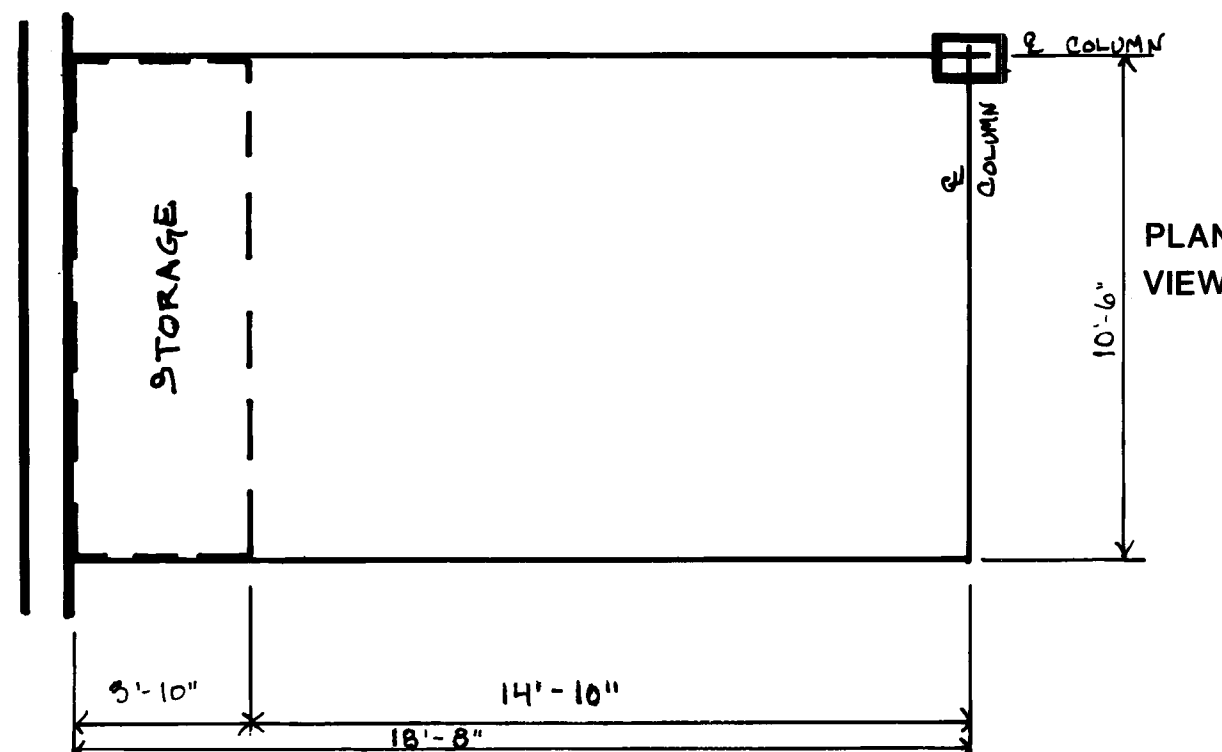


SCALE IN FEET

- FTCH FLOOR TO CEILING HEIGHT
- CE COMMON ELEMENT
- LCE LIMITED COMMON ELEMENT
- ST STORAGE

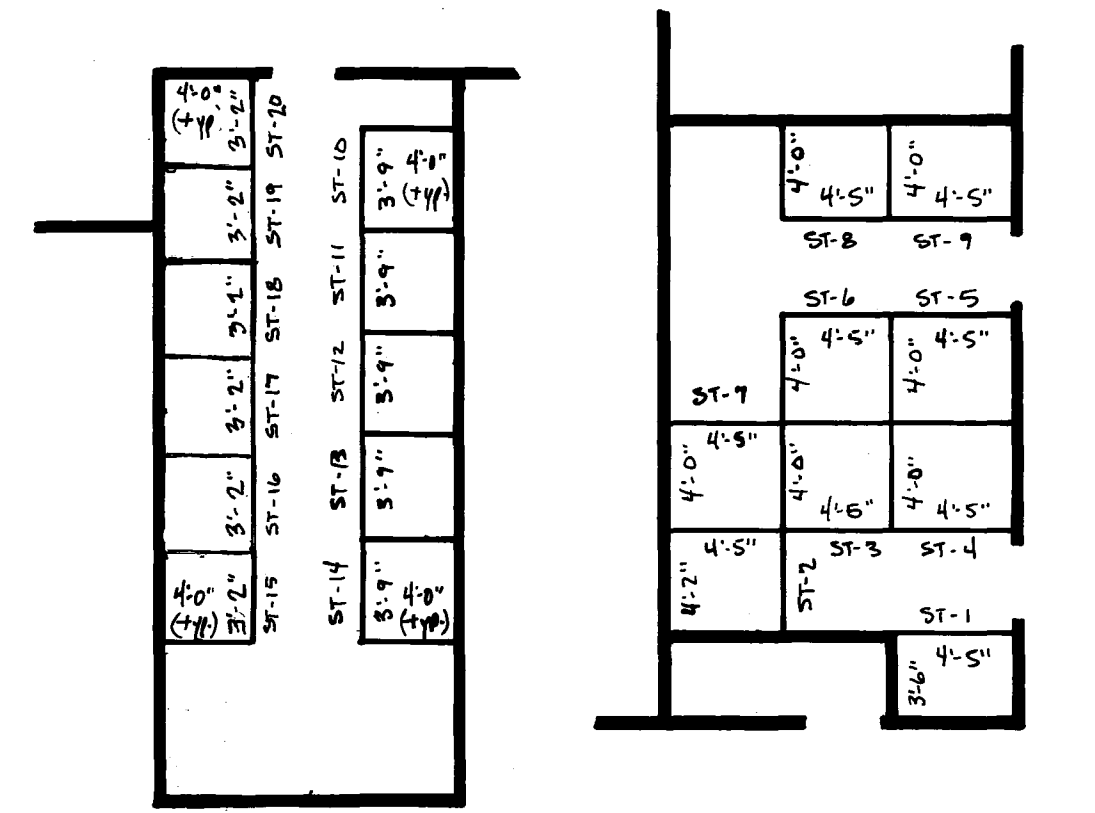


TYPICAL UNDERGROUND GARAGE UNIT

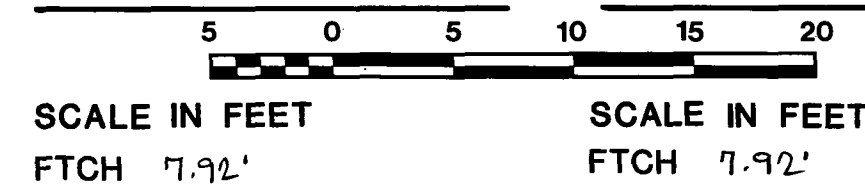


Elevations shown are referenced to benchmark on site plan page 1 of 16.

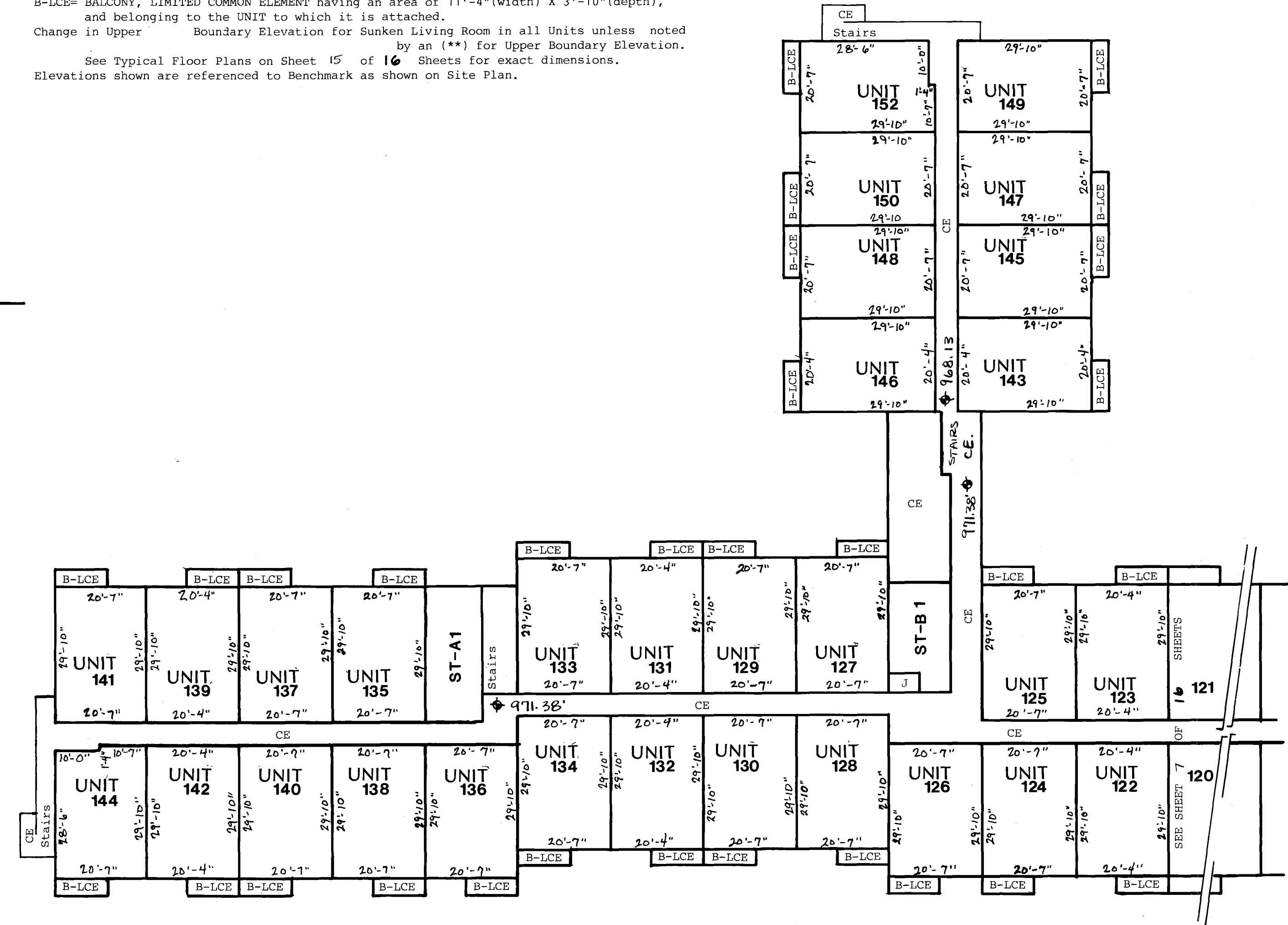
CONDOMINIUM NUMBER 27
BLACK FOREST CONDOMINIUM



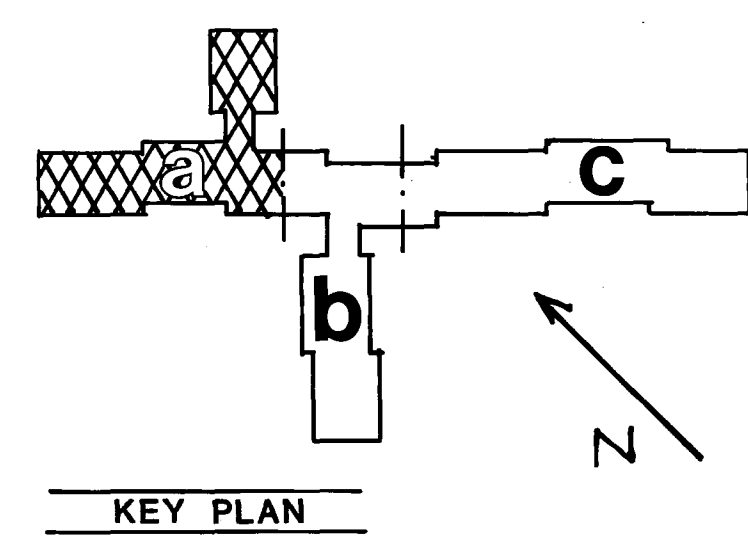
STORAGE ROOM-A1 STORAGE ROOM-B1



NOTES:
C.E.=COMMON ELEMENT
B-LCE= BALCONY, LIMITED COMMON ELEMENT having an area of 11'-4"(width) X 3'-10"(depth), and belonging to the UNIT to which it is attached.
Change in Upper Boundary Elevation for Sunken Living Room in all Units unless noted by an (**) for Upper Boundary Elevation.
See Typical Floor Plans on Sheet 15 of 16 Sheets for exact dimensions.
Elevations shown are referenced to Benchmark as shown on Site Plan.



BUILDING SECTION-A1
FTCH 7.92'

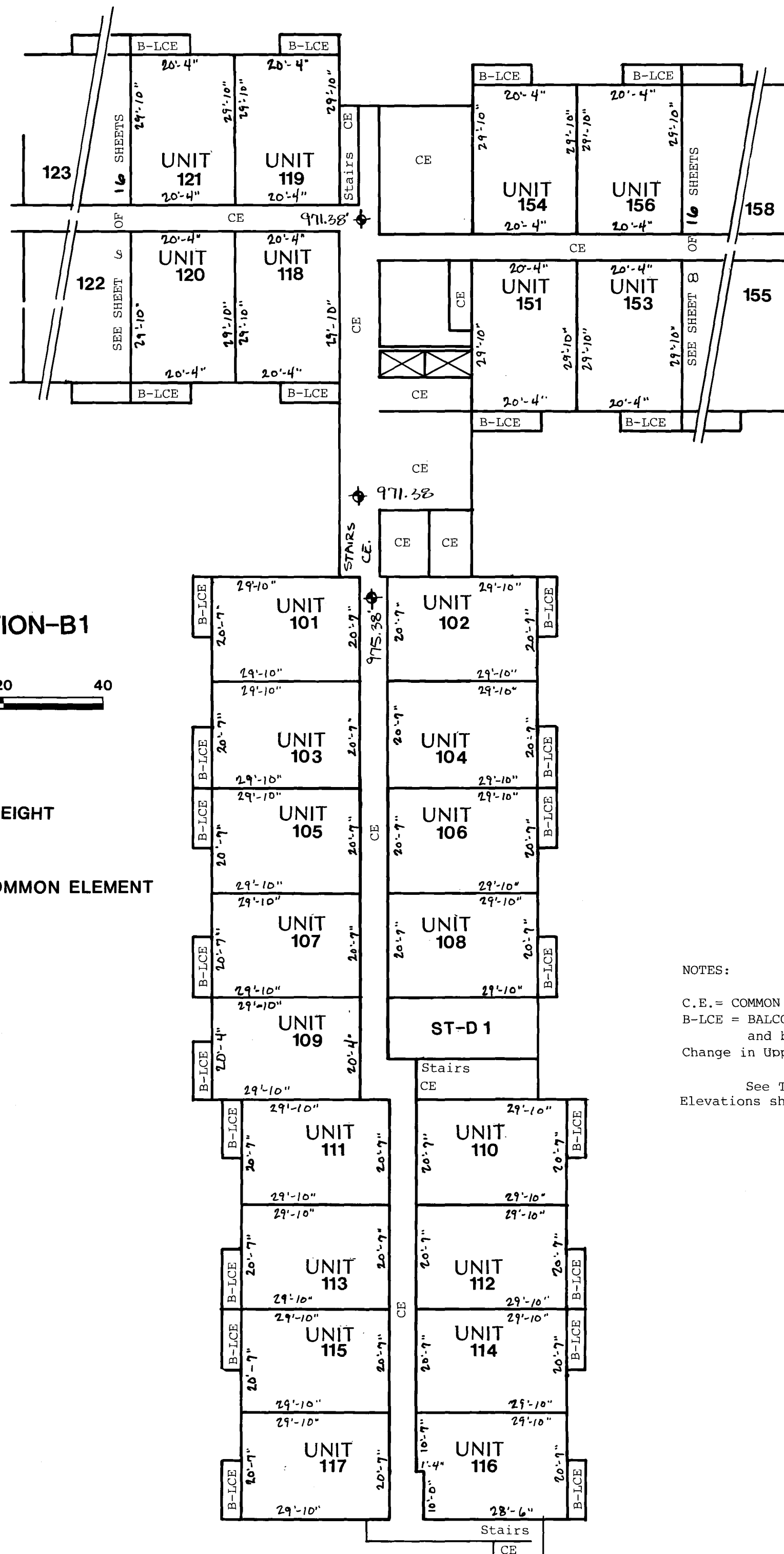


FTCH FLOOR TO CEILING HEIGHT
CE COMMON ELEMENT
B-LCE BALCONY LIMITED COMMON ELEMENT
ST STORAGE

Elevations shown are referenced to benchmark on site plan page 1 of 16.

FILE NO

CONDOMINIUM NUMBER 27
BLACK FOREST CONDOMINIUM



BUILDING SECTION-B1
FTCH 71.92'



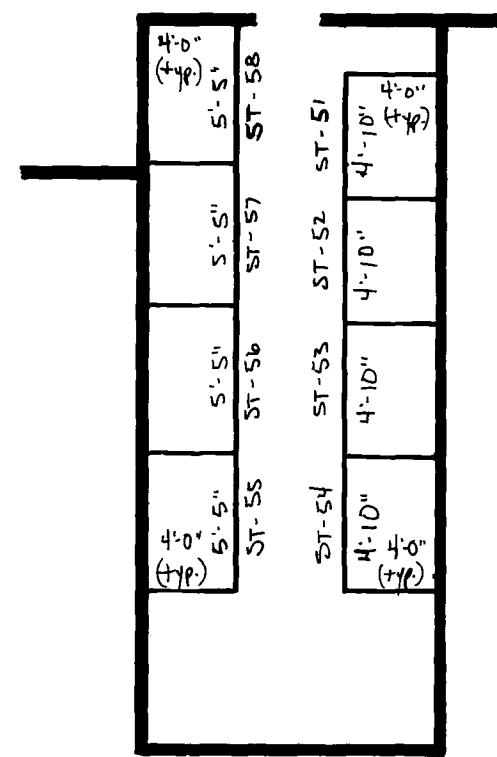
FTCH FLOOR TO CEILING HEIGHT
 CE COMMON ELEMENT
 B-LCE BALCONY LIMITED COMMON ELEMENT
 ST STORAGE

NOTES:

C.E. = COMMON ELEMENT
 B-LCE = BALCONY, LIMITED COMMON ELEMENT having an area of 11'-4" (width) X 3'-10" (depth), and belonging to the UNIT to which it is attached.
 Change in Upper Boundary Elevation for Sunken Living Room in all Units unless noted by an (*) for Upper Boundary Elevation.
 See Typical Floor Plans on Sheet 15 of 16 Sheets for exact dimensions.
 Elevations shown are referenced to Benchmark as shown on Site Plan.

Elevations shown are referenced to benchmark on site plan page 1 of 16.

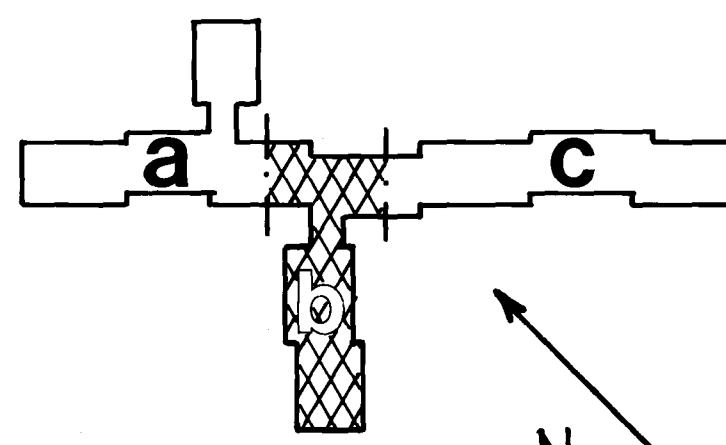
FILE NO



STORAGE ROOM-D1



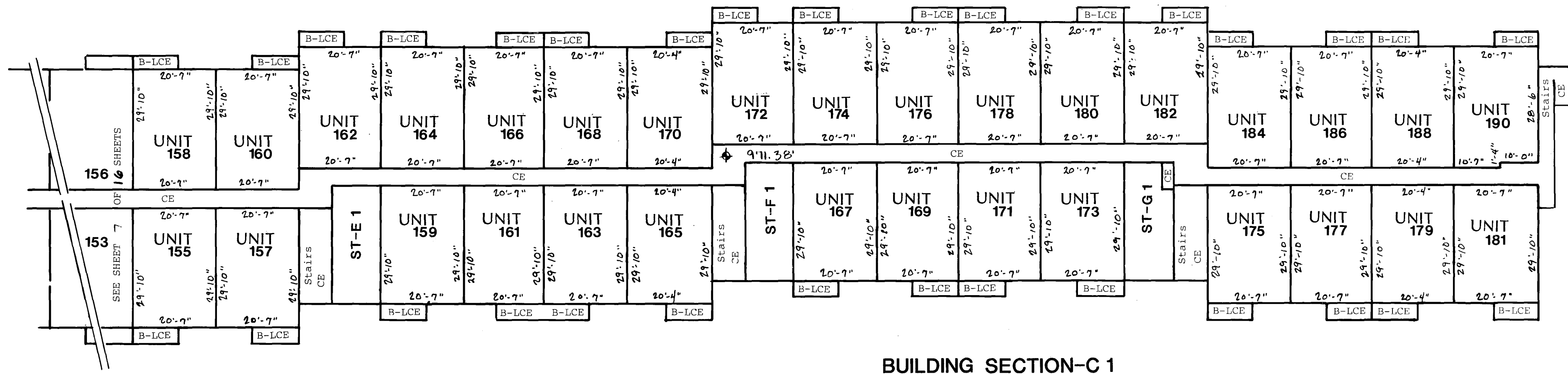
SCALE IN FEET
FTCH 71.92'



KEY PLAN

NOTES:

C.E.= COMMON ELEMENT
 B-LCE= BALCONY, LIMITED COMMON ELEMENT having an area of 11'-4"(width) X 3'-10"(depth),
 and belonging to the unit to which it is attached.
 Change in Upper Boundary Elevation for Sunken Living Room in all Units unless noted
 by an (**) for Upper Boundary Elevation.
 See Typical Floor Plans on Sheet 15 of 16 Sheets for exact dimensions
 Elevations shown are referenced to Benchmark as shown on Site Plan.

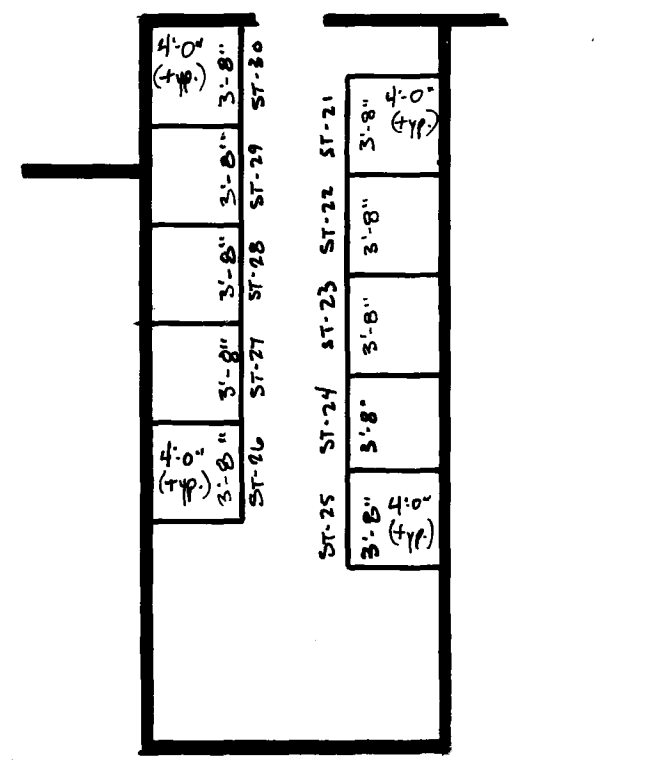
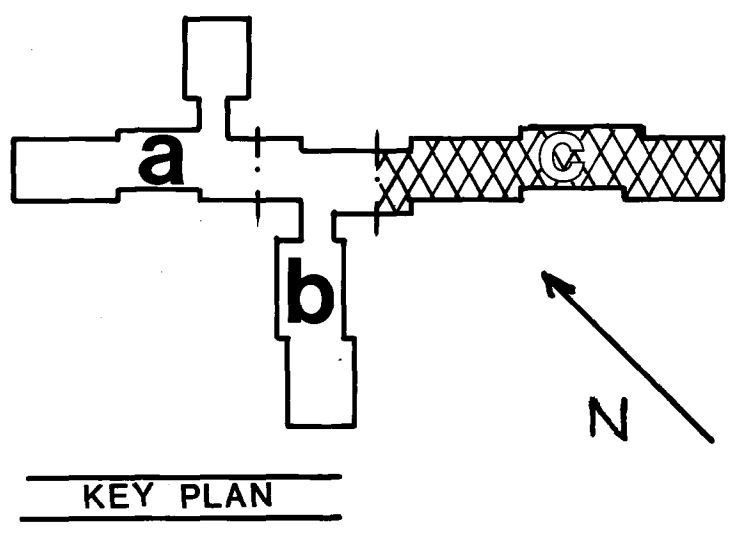


BUILDING SECTION-C 1
 FTCH '1.92'

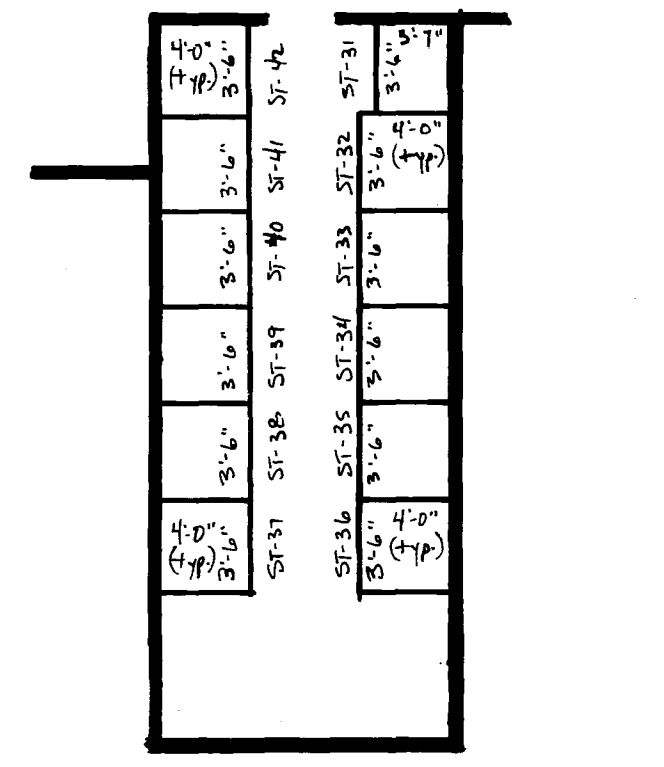
SCALE IN FEET

- FTCH FLOOR TO CEILING HEIGHT
- CE COMMON ELEMENT
- B-LCE BALCONY LIMITED COMMON ELEMENT
- ST STORAGE

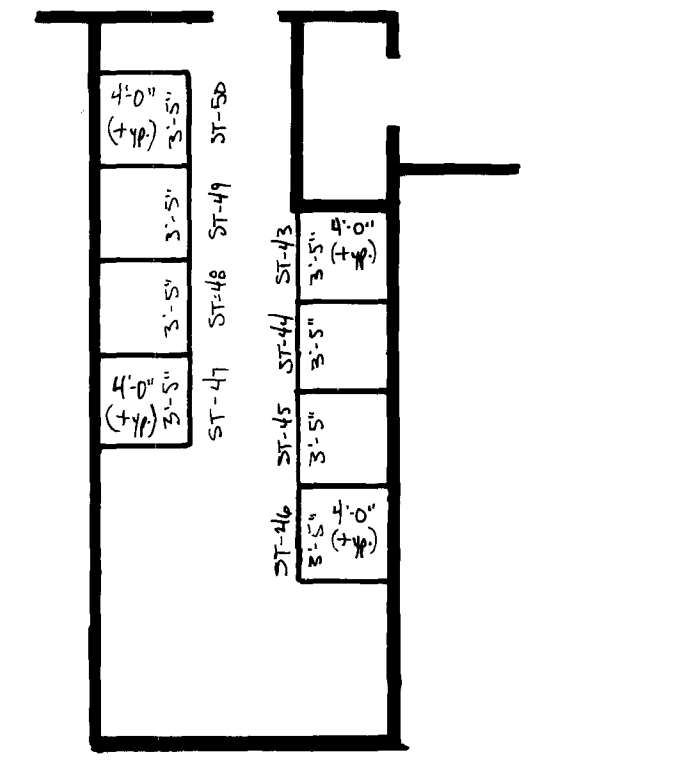
Elevations shown are referenced to benchmark on site plan page 1 of 16.



STORAGE ROOM-E 1
 SCALE IN FEET FTCH '1.91'

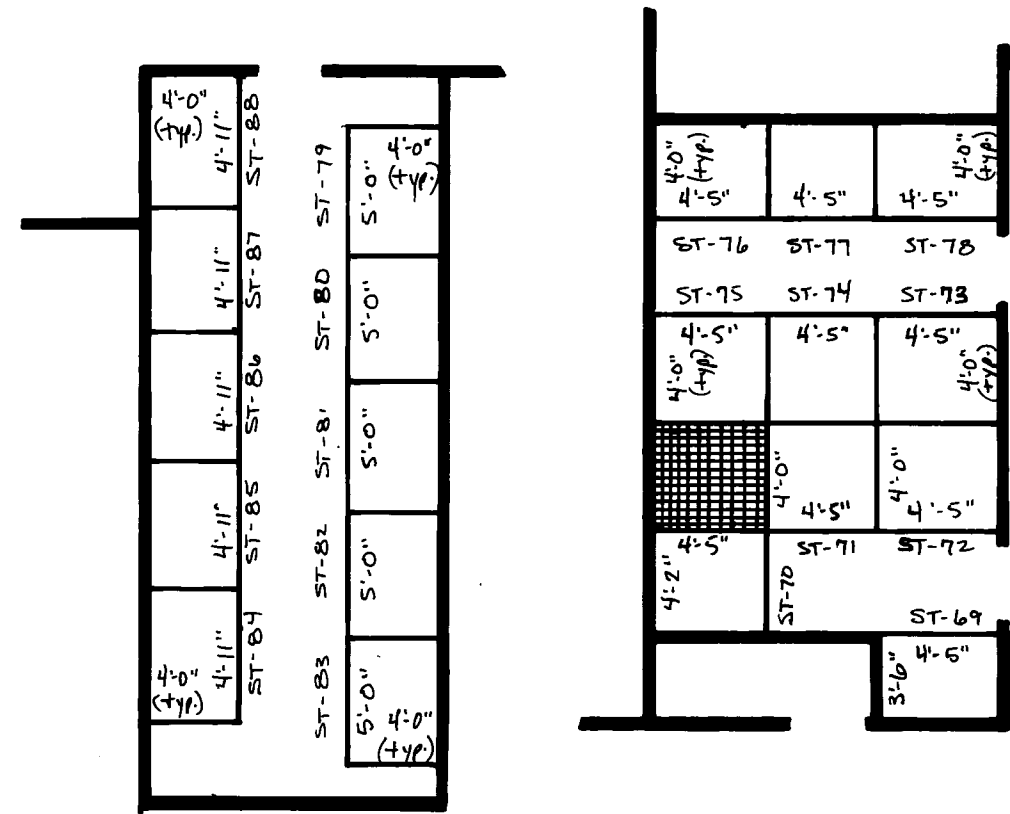


STORAGE ROOM-F 1
 SCALE IN FEET FTCH '1.91'

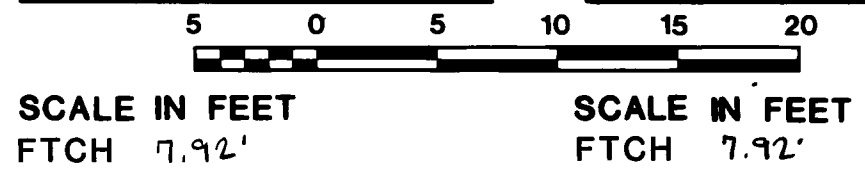


STORAGE ROOM-G 1
 SCALE IN FEET FTCH '1.92'

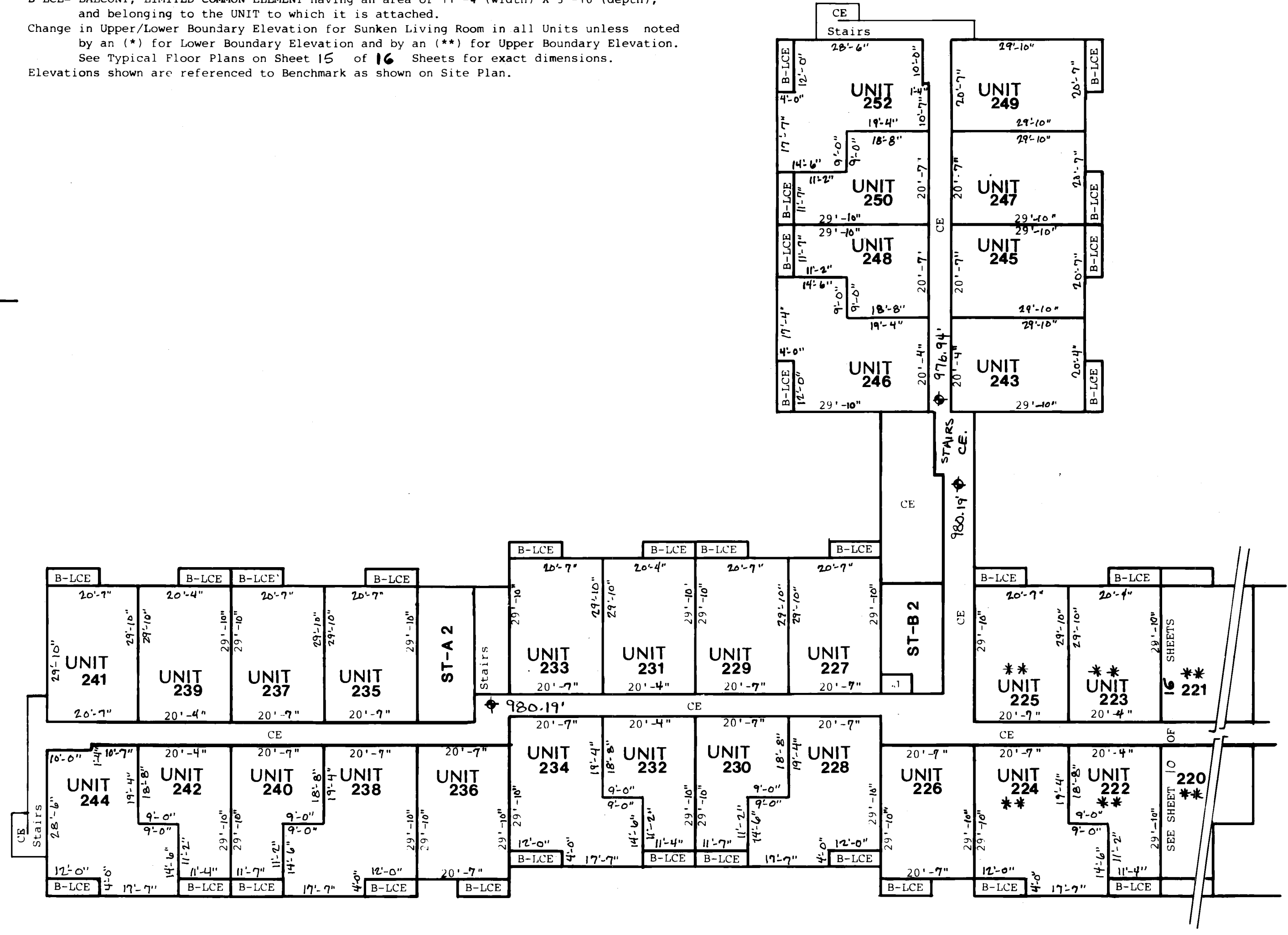
FILE NO OFFICIAL
CONDOMINIUM NUMBER 27
BLACK FOREST CONDOMINIUM



STORAGE ROOM-A2 STORAGE ROOM-B2



NOTES:
 C.E.=COMMON ELEMENT
 B-LCE= BALCONY, LIMITED COMMON ELEMENT having an area of 11'-4"(width) X 3'-10"(depth), and belonging to the UNIT to which it is attached.
 Change in Upper/Lower Boundary Elevation for Sunken Living Room in all Units unless noted by an (*) for Lower Boundary Elevation and by an (**) for Upper Boundary Elevation.
 See Typical Floor Plans on Sheet 15 of 16 Sheets for exact dimensions.
 Elevations shown are referenced to Benchmark as shown on Site Plan.



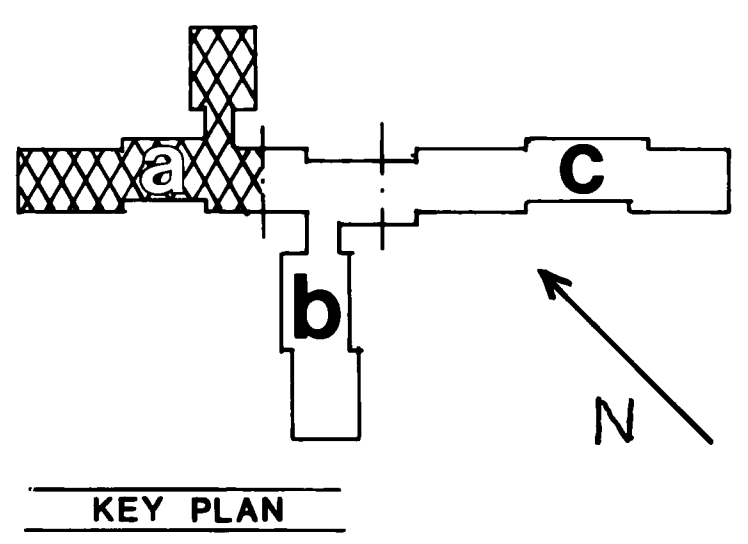
BUILDING SECTION-A2
 FTCH 7.92'



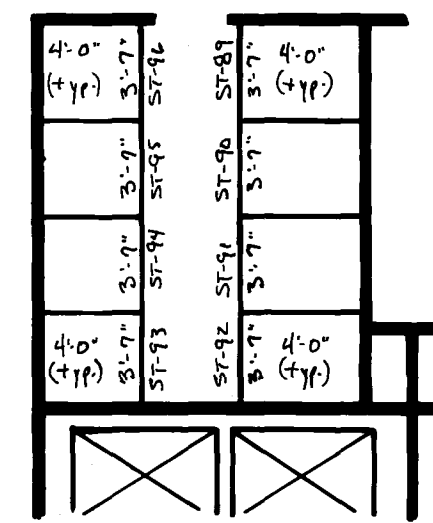
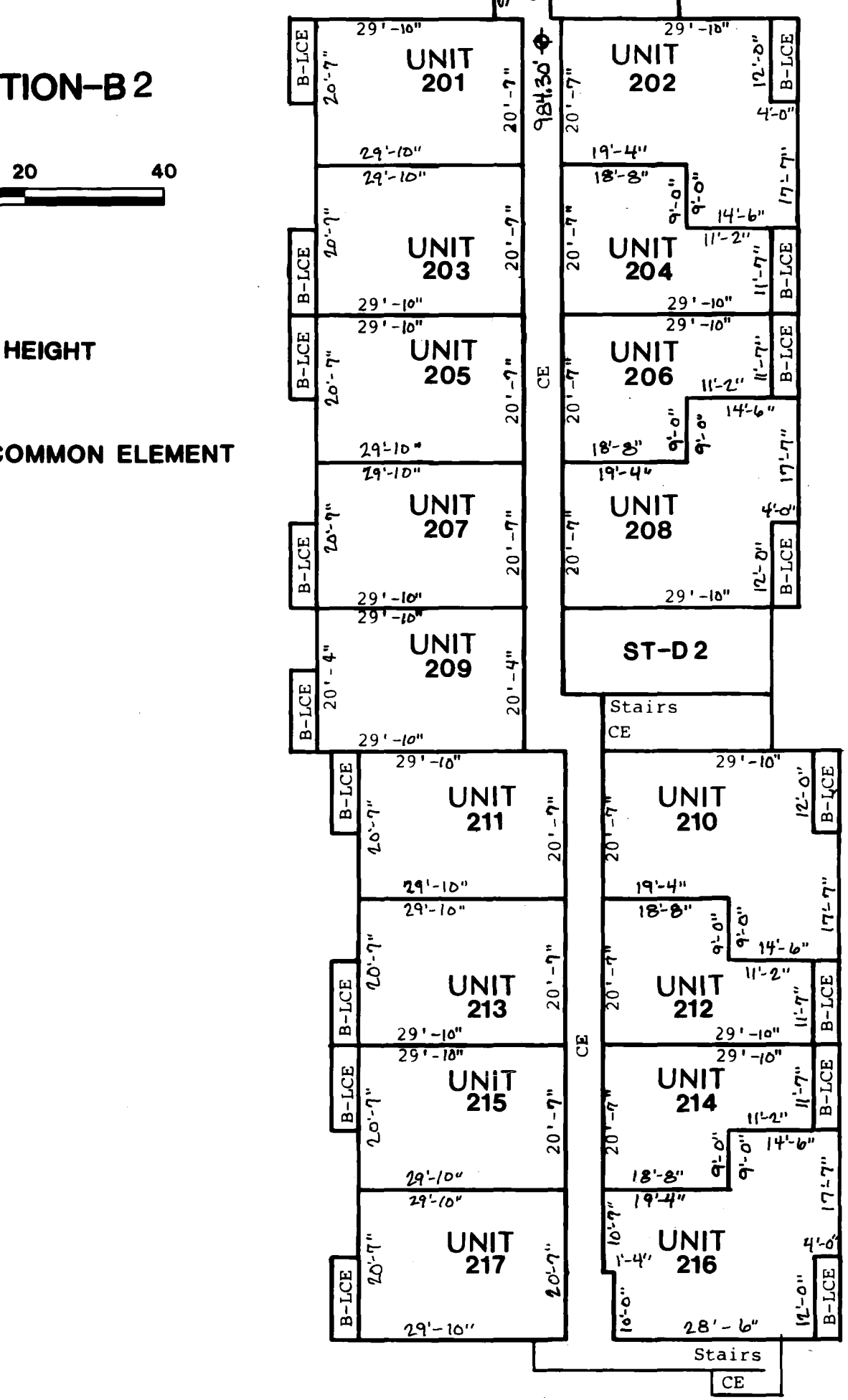
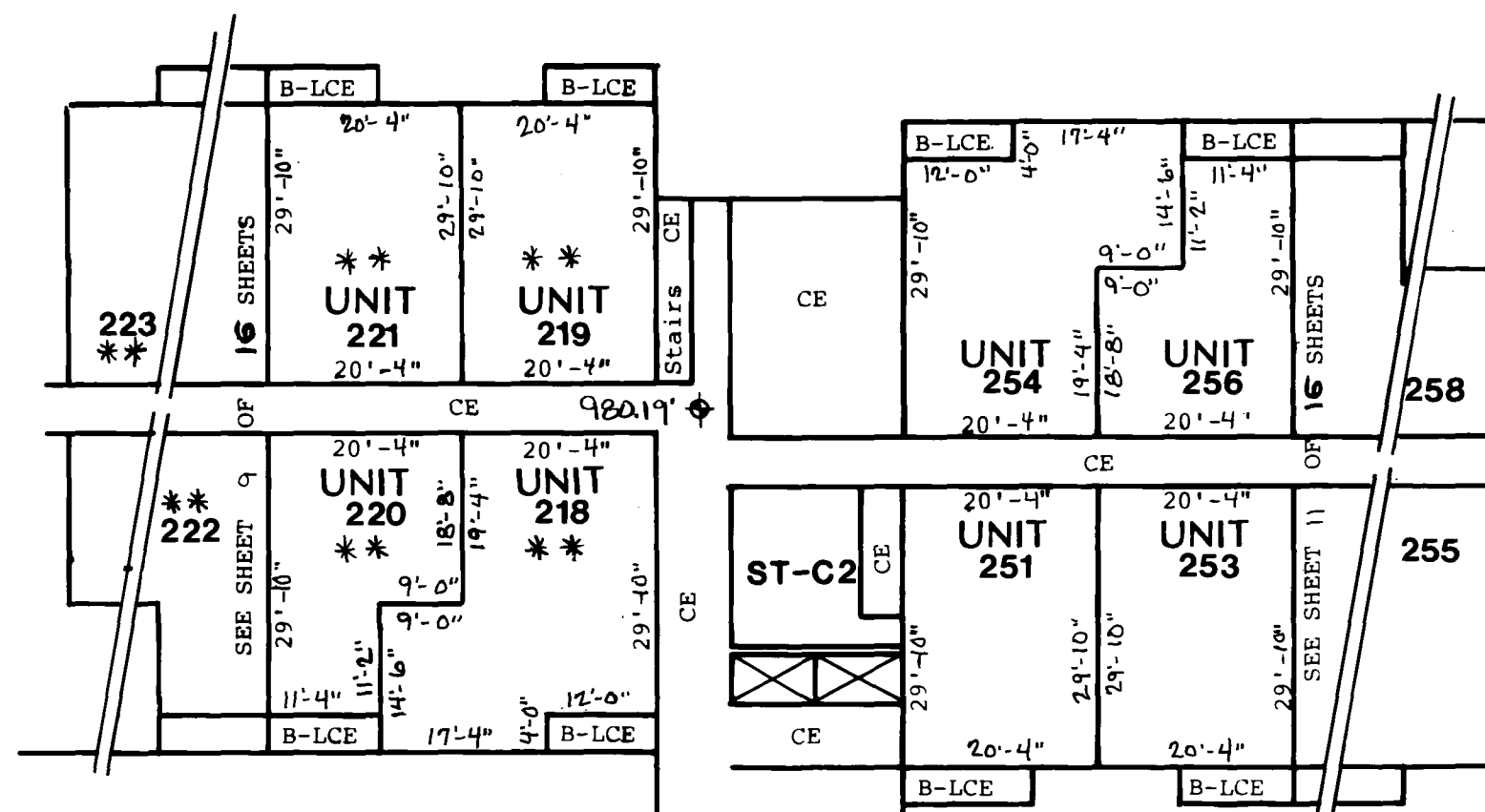
- FTCH FLOOR TO CEILING HEIGHT
- CE COMMON ELEMENT
- B-LCE BALCONY LIMITED COMMON ELEMENT
- ST STORAGE

Elevations shown are referenced to benchmark on site plan page 1 of 16.

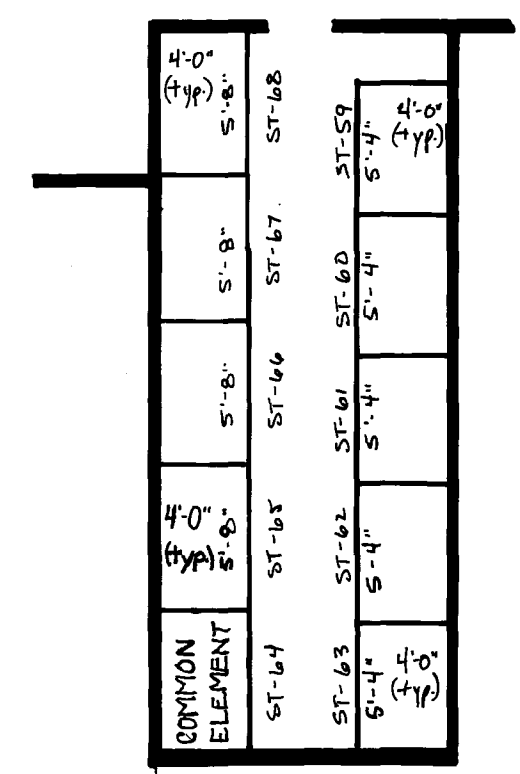
FILE NO



KEY PLAN



STORAGE ROOM-C 2
 SCALE IN FEET FTCH 7.92'

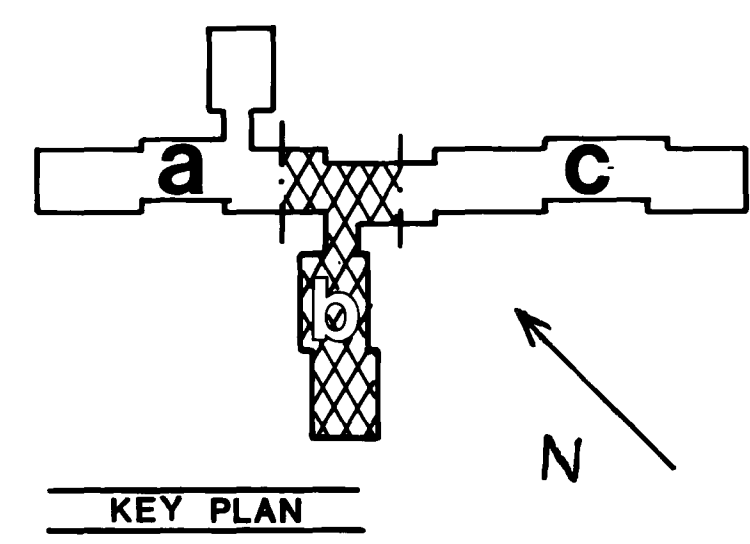


STORAGE ROOM-D 2
 SCALE IN FEET FTCH 7.92'

BUILDING SECTION-B2
 FTCH 7.92'

FTCH FLOOR TO CEILING HEIGHT
 CE COMMON ELEMENT
 B-LCE BALCONY LIMITED COMMON ELEMENT
 ST STORAGE

NOTES:
 C.E. = COMMON ELEMENT
 B-LCE = BALCONY, LIMITED COMMON ELEMENT having an area of 11'-4" (width) X 3'-10" (depth), and belonging to the UNIT to which it is attached.
 Change in Upper/Lower Boundary Elevation for Sunken Living Room in all Units unless noted by an (*) for Lower Boundary Elevation and by an (**) for Upper Boundary Elevation.
 See Typical Floor Plans on Sheet 15 of 16 Sheets for exact dimensions.
 Elevations shown are referenced to Benchmark as shown on Site Plan.

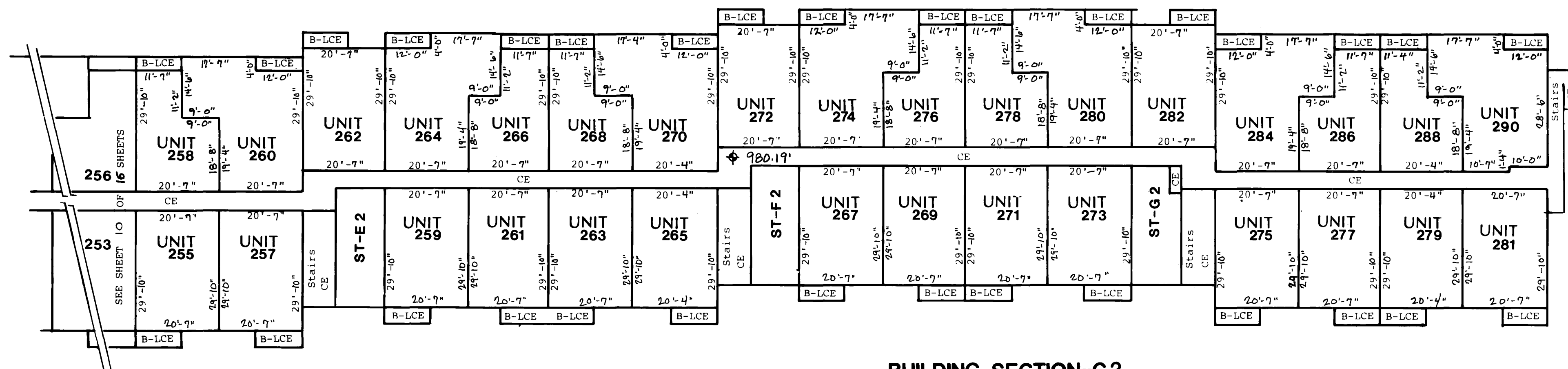


Elevations shown are referenced to benchmark on site plan page 1 of 16.

FILE NO

NOTES:

C.E.= COMMON ELEMENT
 B-LCE= BALCONY, LIMITED COMMON ELEMENT having an area of 11'-4"(width) X 3'-10"(depth),
 and belonging to the unit to which it is attached.
 Change in Upper/Lower Boundary Elevation for Sunken Living Room in all Units unless noted
 by an (*) for Lower Boundary Elevation and by an (**) for Upper Boundary Elevation.
 See Typical Floor Plans on Sheet 15 of 16 Sheets for exact dimensions
 Elevations shown are referenced to Benchmark as shown on Site Plan.

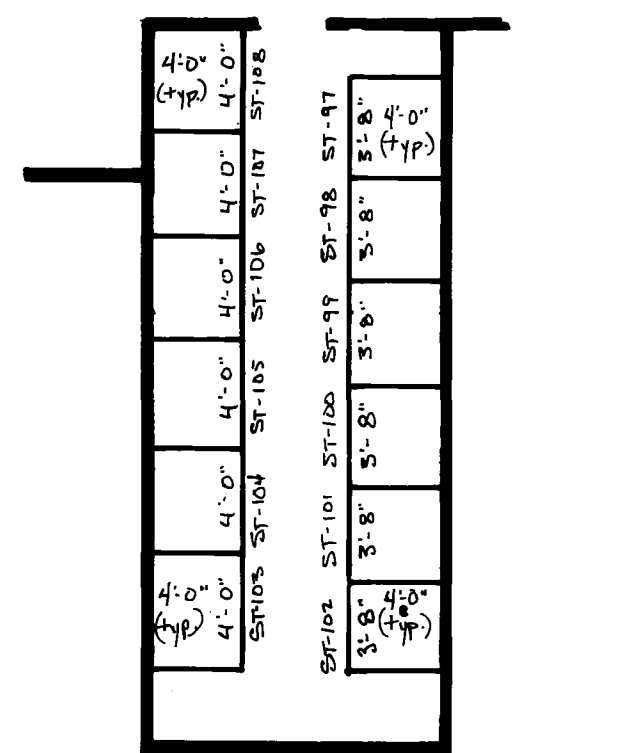
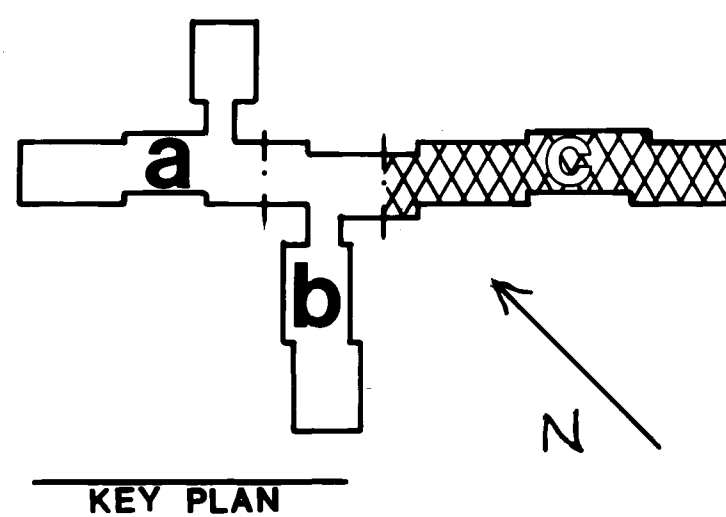


BUILDING SECTION-C2
 FTCH 7.92'

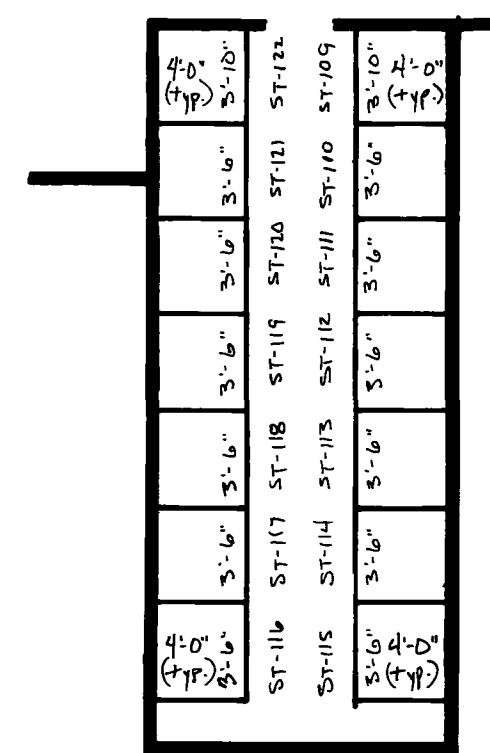
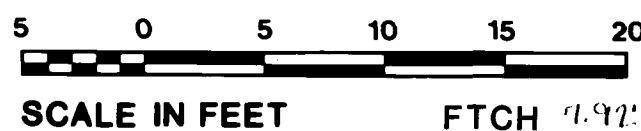


- FTCH FLOOR TO CEILING HEIGHT
- CE COMMON ELEMENT
- B-LCE BALCONY LIMITED COMMON ELEMENT
- ST STORAGE

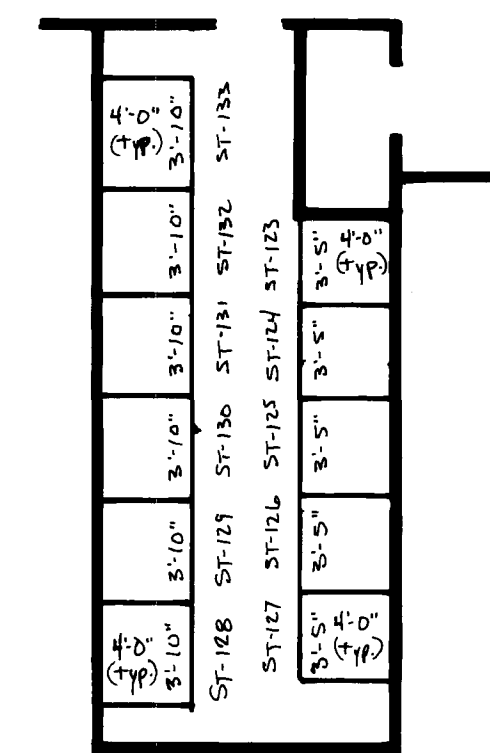
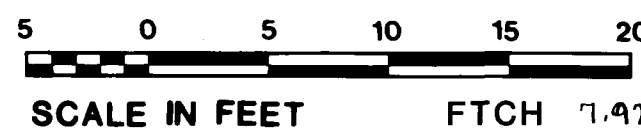
Elevations shown are referenced to benchmark on site plan page 1 of 16.



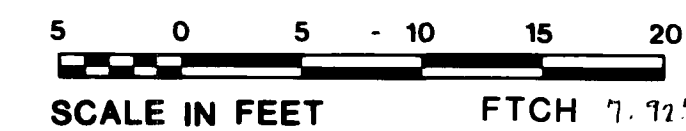
STORAGE ROOM-E 2

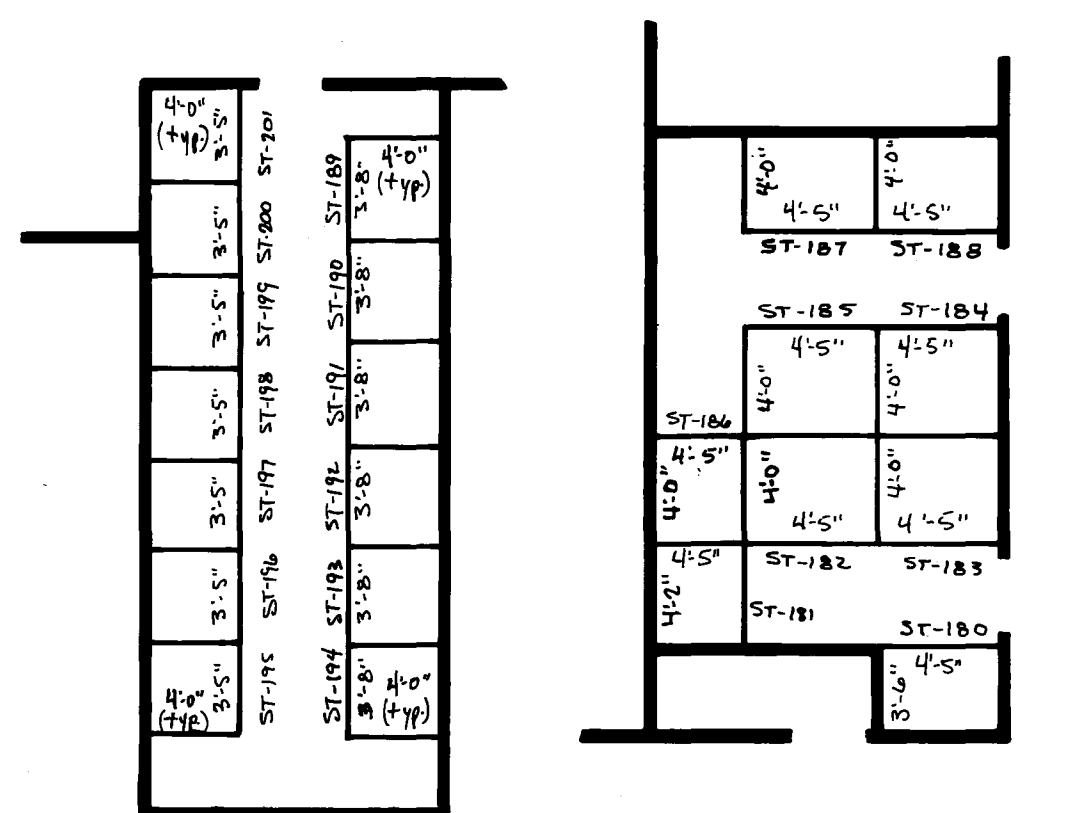


STORAGE ROOM-F 2

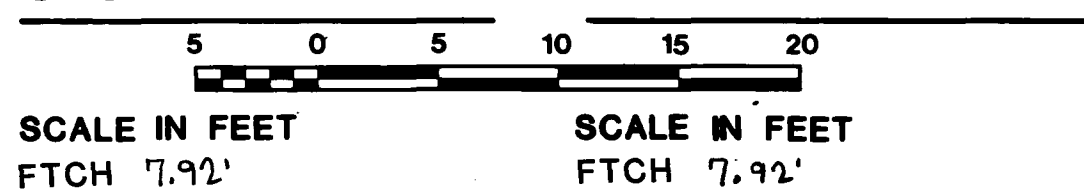


STORAGE ROOM-G 2

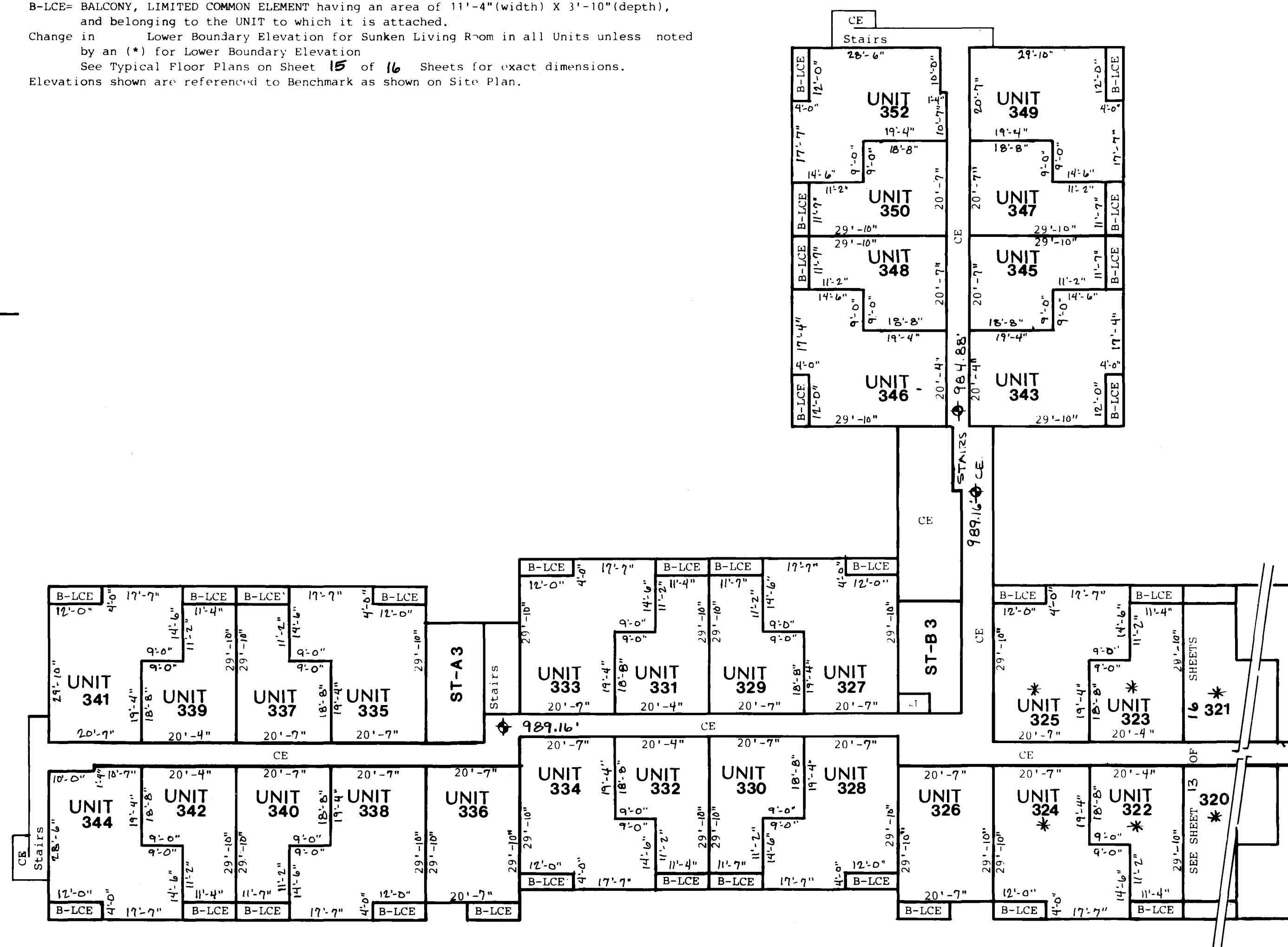




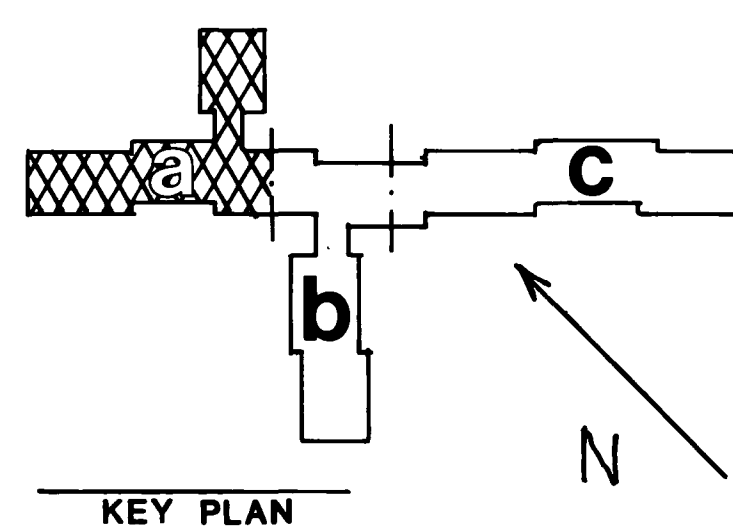
STORAGE ROOM-A3 STORAGE ROOM-B3



NOTES:
 C.E.=COMMON ELEMENT
 B-LCE= BALCONY, LIMITED COMMON ELEMENT having an area of 11'-4"(width) X 3'-10"(depth), and belonging to the UNIT to which it is attached.
 Change in Lower Boundary Elevation for Sunken Living Room in all Units unless noted by an (*) for Lower Boundary Elevation.
 See Typical Floor Plans on Sheet 15 of 16 Sheets for exact dimensions.
 Elevations shown are referenced to Benchmark as shown on Site Plan.



BUILDING SECTION-A3
 FTCH 7.92'

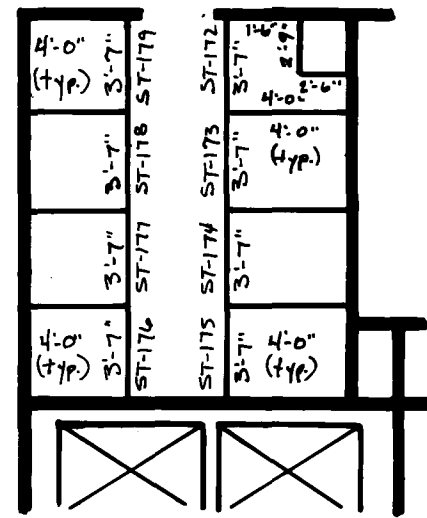


FTCH FLOOR TO CEILING HEIGHT
 CE COMMON ELEMENT
 B-LCE BALCONY LIMITED COMMON ELEMENT
 ST STORAGE

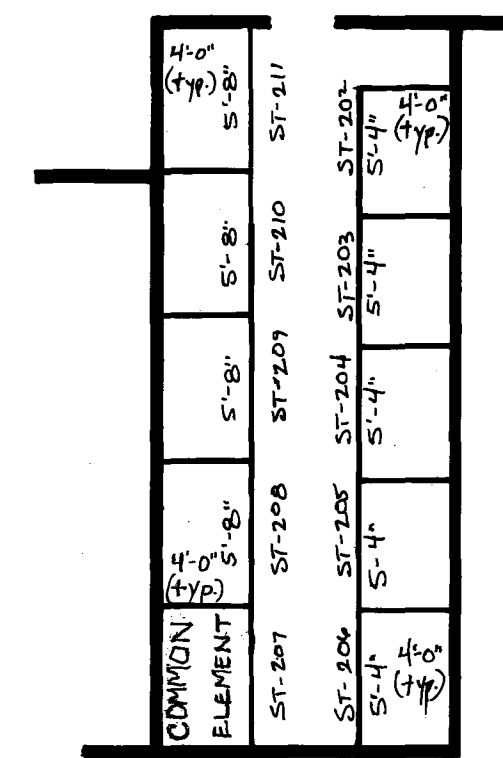
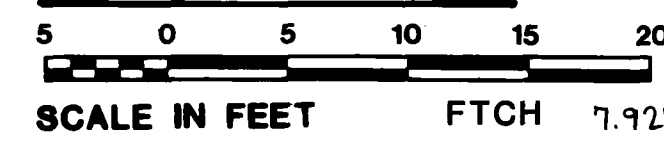
Elevations shown are referenced to benchmark on site plan page 1 of 16.

CONDOMINIUM NUMBER 27
BLACK FOREST CONDOMINIUM

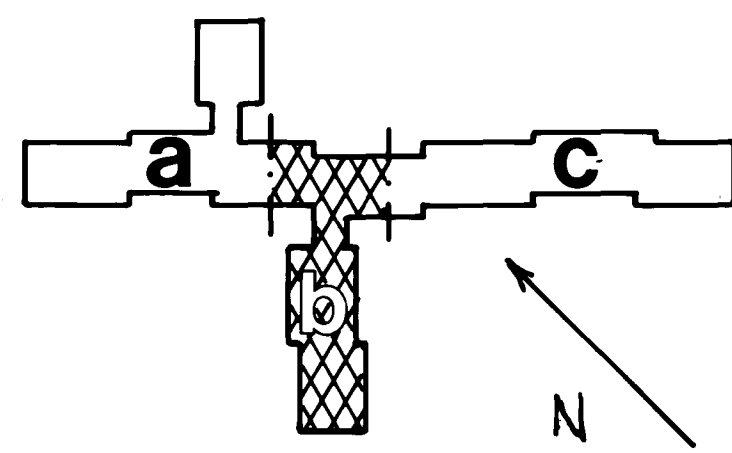
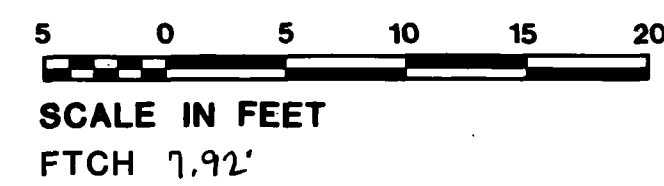
FILE NO



STORAGE ROOM-C 3



STORAGE ROOM-D 3

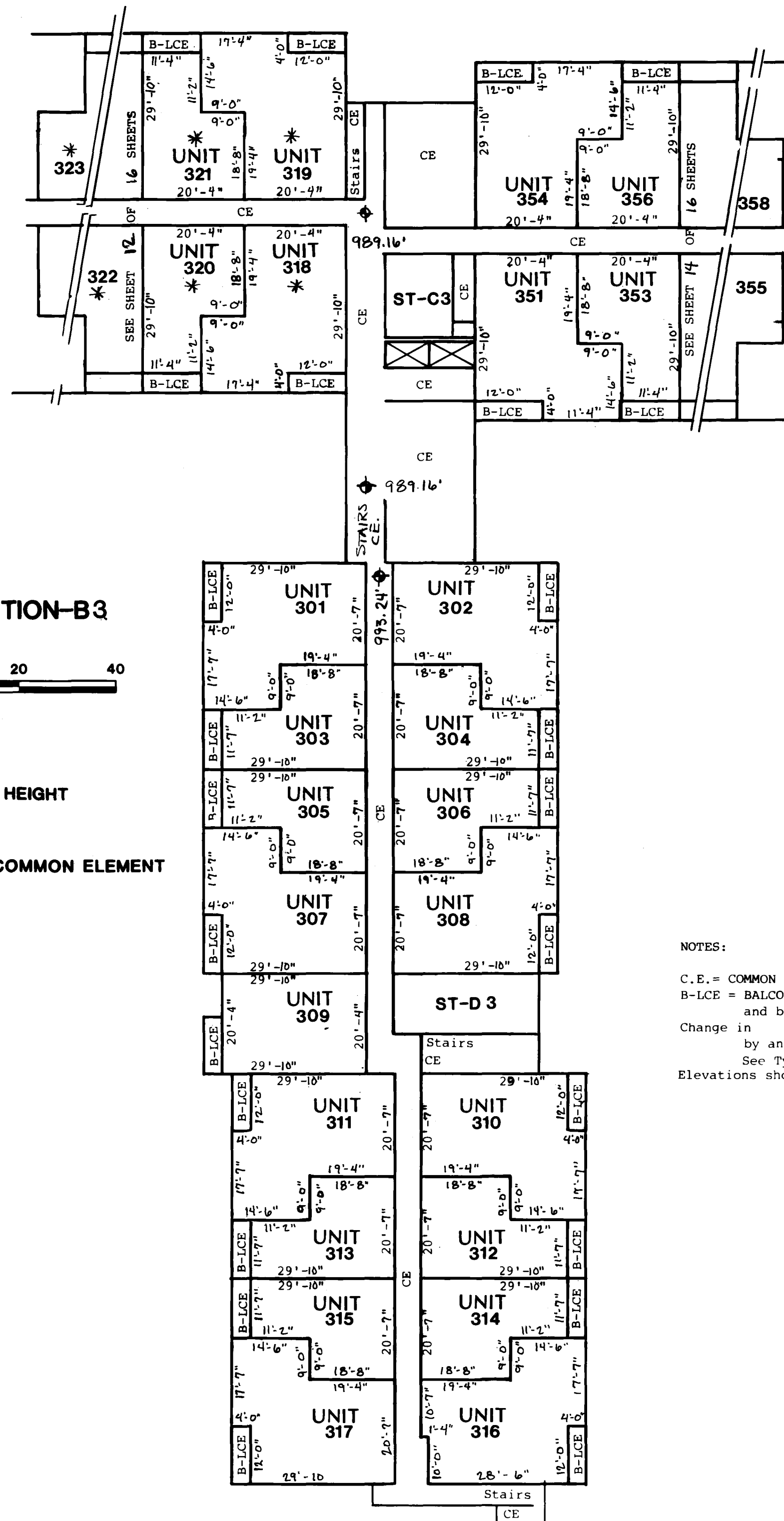


KEY PLAN

BUILDING SECTION-B3
FTCH 7.92'



FTCH FLOOR TO CEILING HEIGHT
CE COMMON ELEMENT
B-LCE BALCONY LIMITED COMMON ELEMENT
ST STORAGE

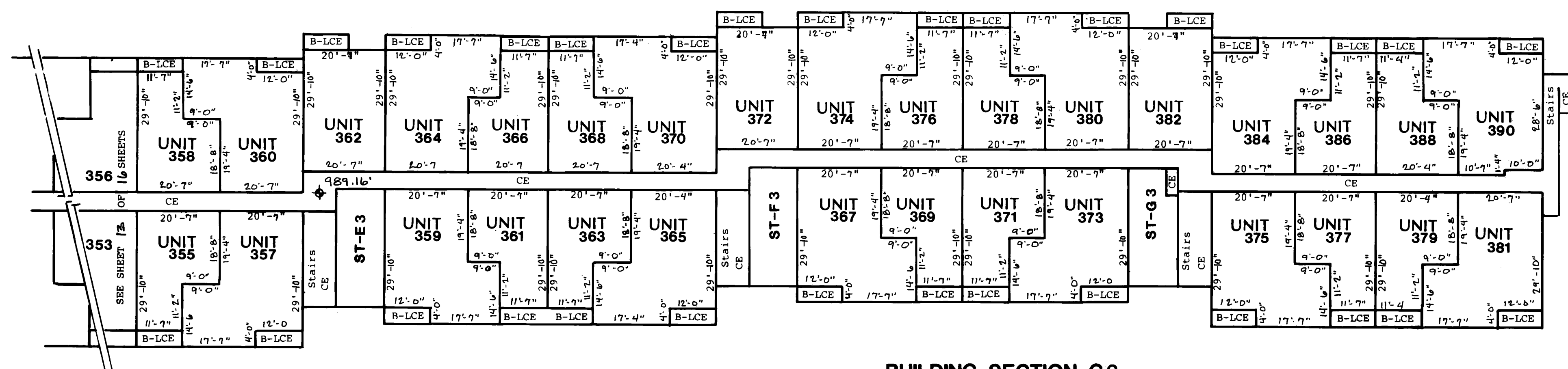


NOTES:

C.E. = COMMON ELEMENT
B-LCE = BALCONY, LIMITED COMMON ELEMENT having an area of 11'-4" (width) X 3'-10" (depth), and belonging to the UNIT to which it is attached.
Change in Lower Boundary Elevation for Sunken Living Room in all Units unless noted by an (★) for Lower Boundary Elevation.
See Typical Floor Plans on Sheet 15 of 16 Sheets for exact dimensions.
Elevations shown are referenced to Benchmark as shown on Site Plan.

Elevations shown are referenced to benchmark on site plan page 1 of 16.

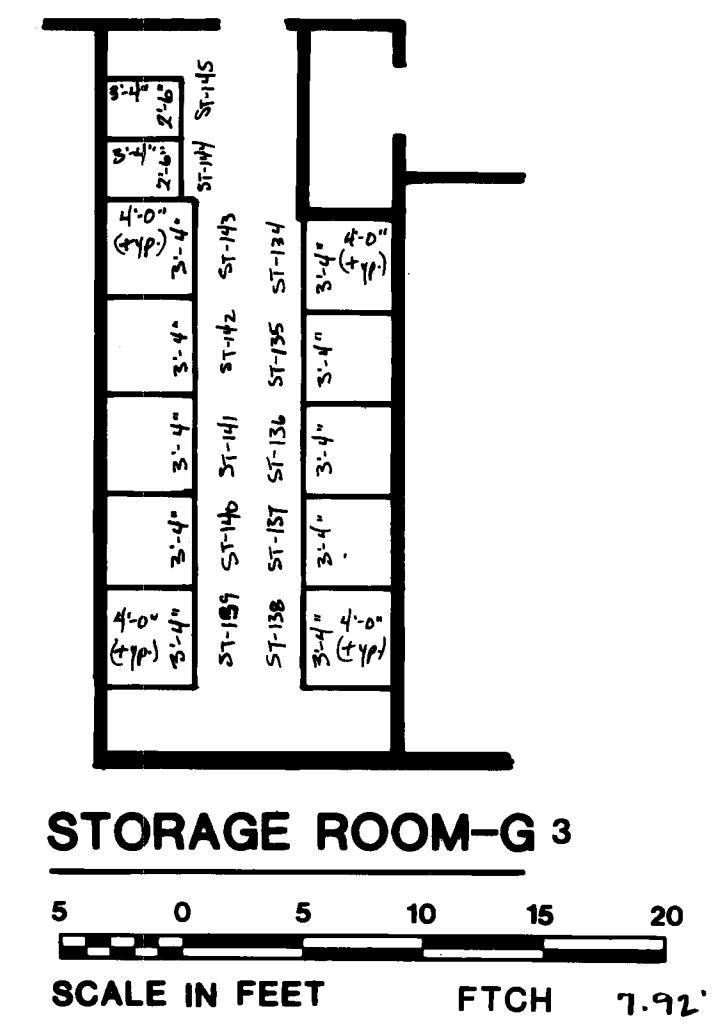
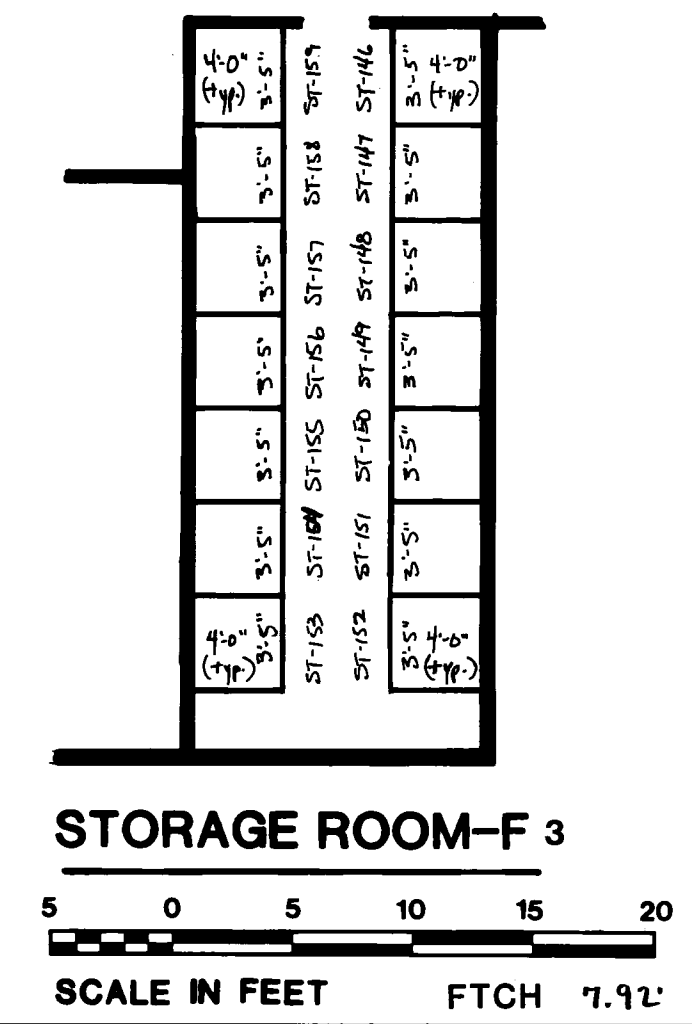
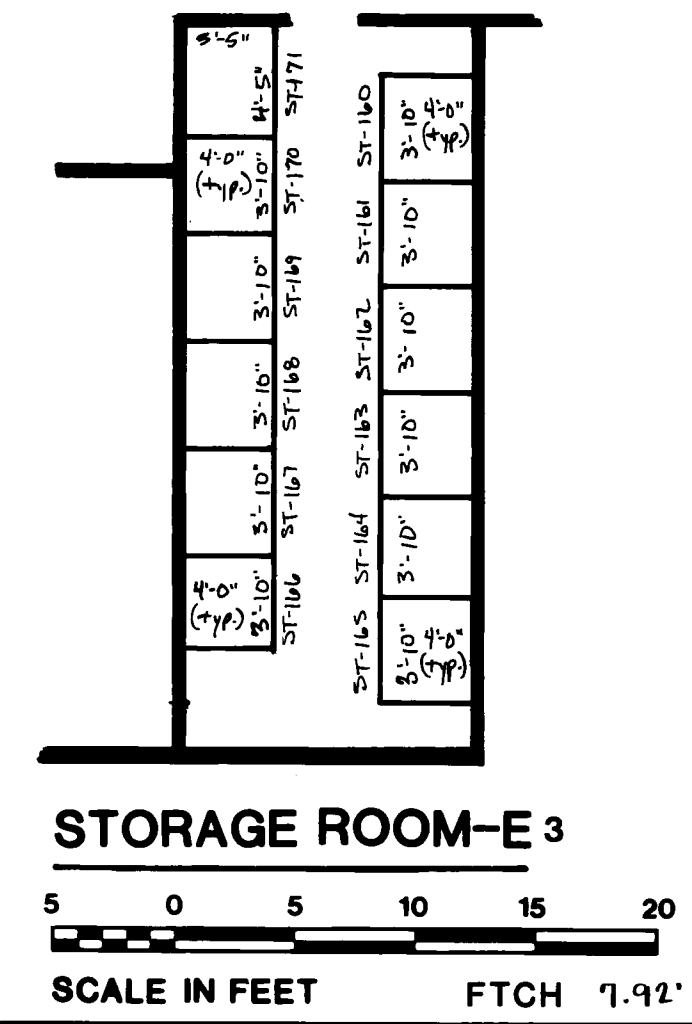
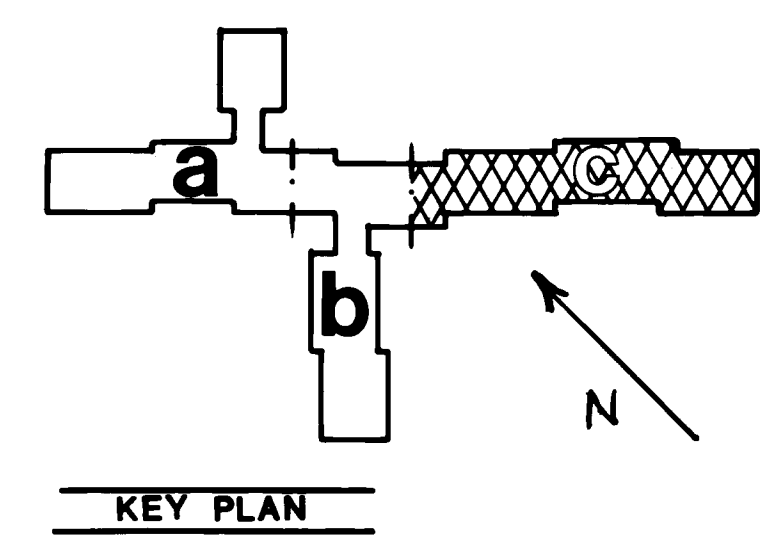
NOTES:
 C.E. = COMMON ELEMENT
 B-LCE = BALCONY, LIMITED COMMON ELEMENT having an area of 11'-4" (width) X 3'-10" (depth), and belonging to the unit to which it is attached.
 Change in Lower Boundary Elevation for Sunken Living Room in all Units unless noted by an (*) for Lower Boundary Elevation
 See Typical Floor Plans on Sheet 15 of 16 Sheets for exact dimensions
 Elevations shown are referenced to Benchmark as shown on Site Plan.



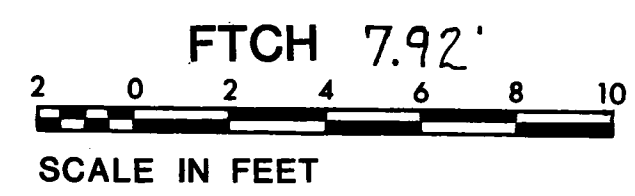
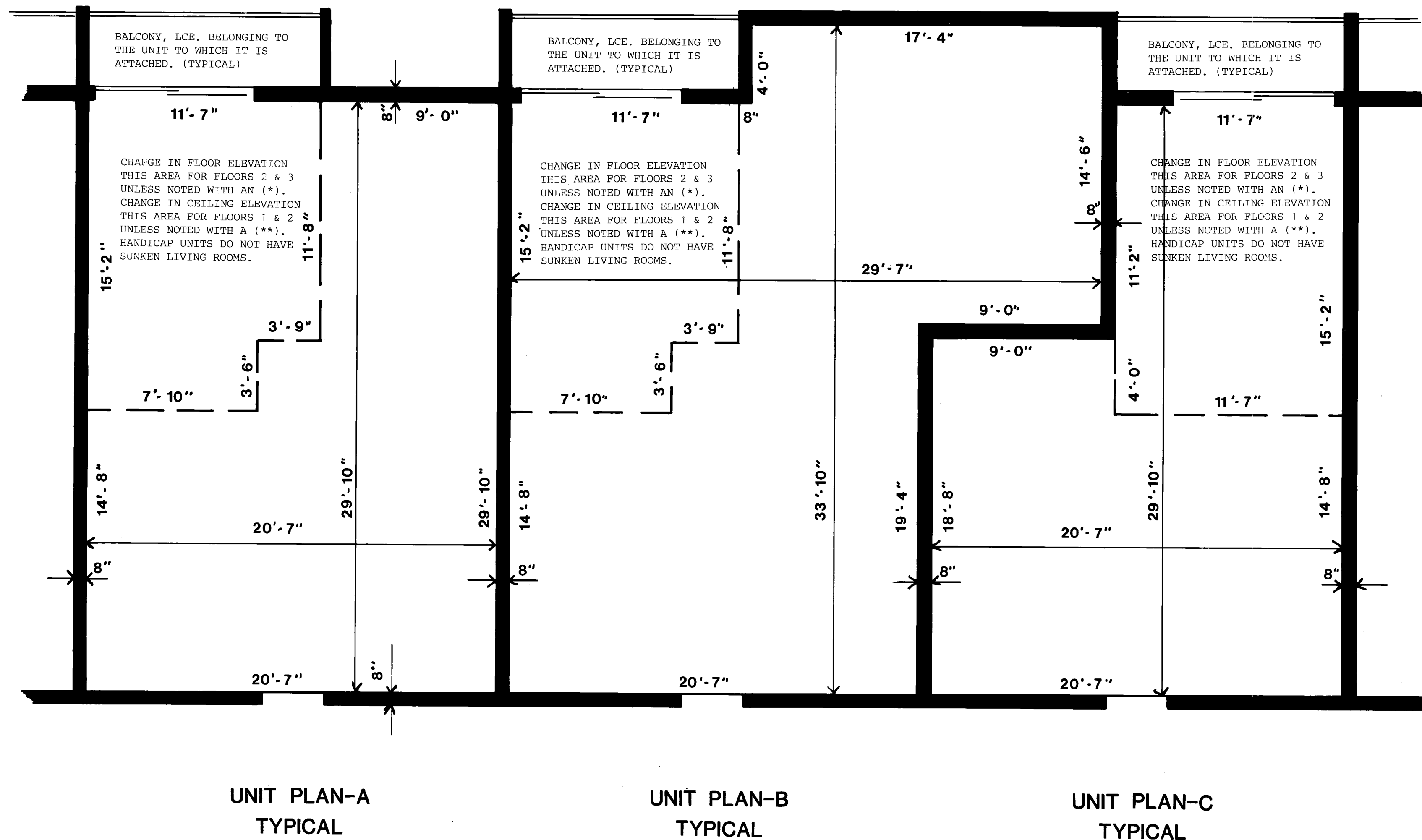
BUILDING SECTION-C3
 FTCH 7.92'
 20 0 20 40
 SCALE IN FEET

FTCH FLOOR TO CEILING HEIGHT
 CE COMMON ELEMENT
 B-LCE BALCONY LIMITED COMMON ELEMENT
 ST STORAGE

Elevations shown are referenced to benchmark on site plan page 1 of 16.

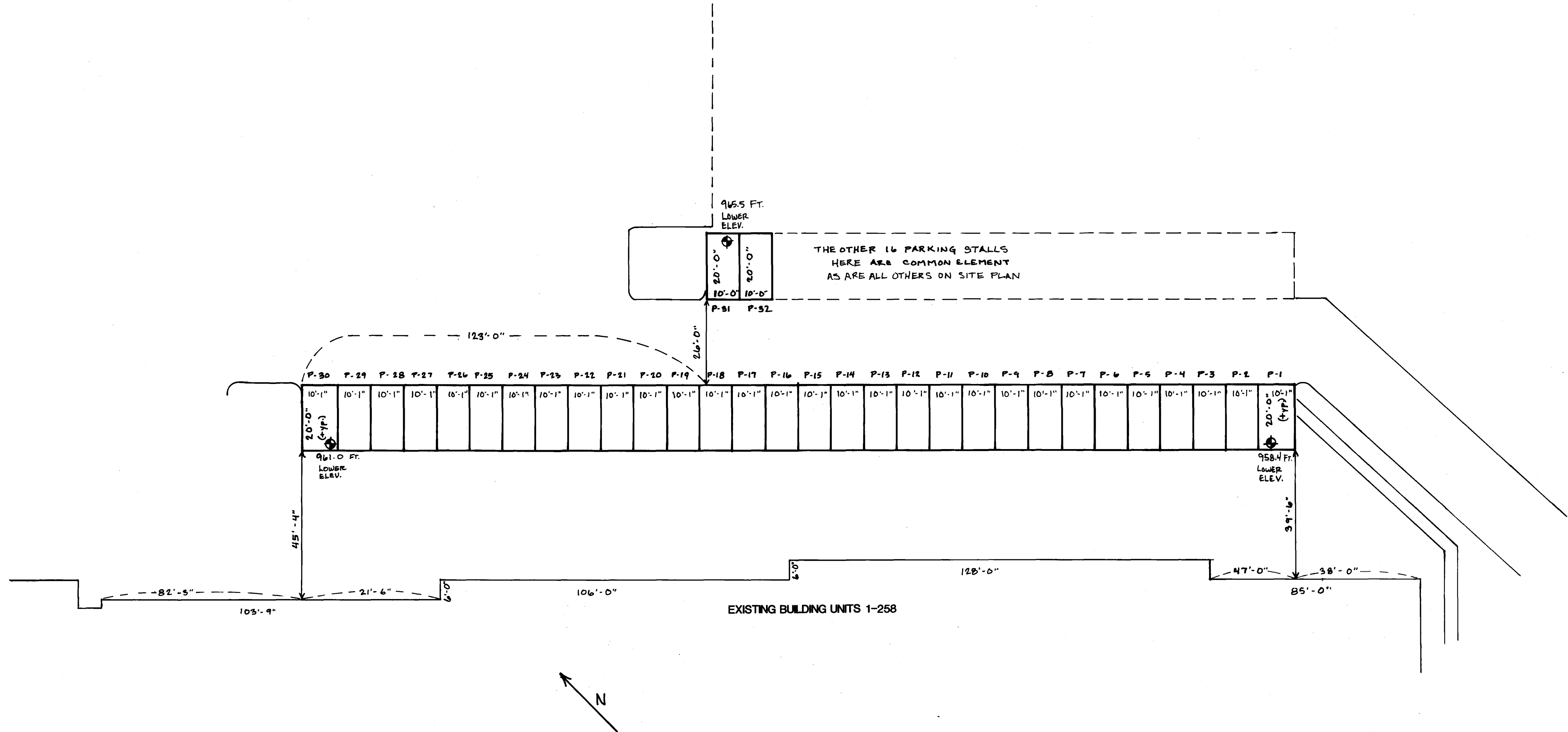


FILE NO



CONDOMINIUM NUMBER 27 BLACK FOREST CONDOMINIUM

FILE NO



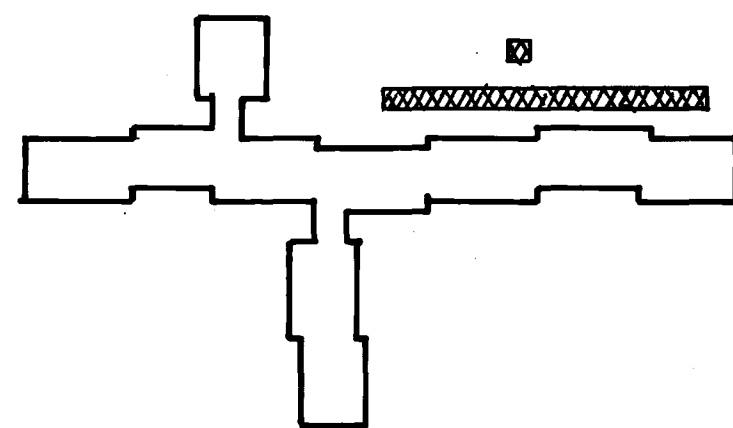
PARKING UNITS 1-32

LOWER TO UPPER ELEV. - 7.5'



SCALE IN FEET

Elevations shown are referenced to benchmark on site plan page 1 of 16.



KEY PLAN