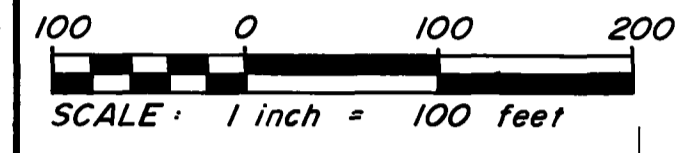
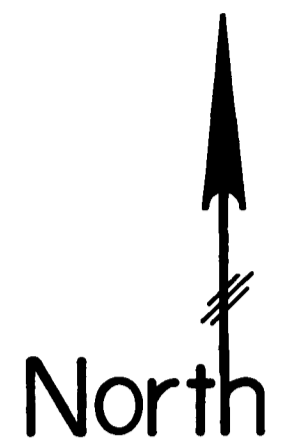


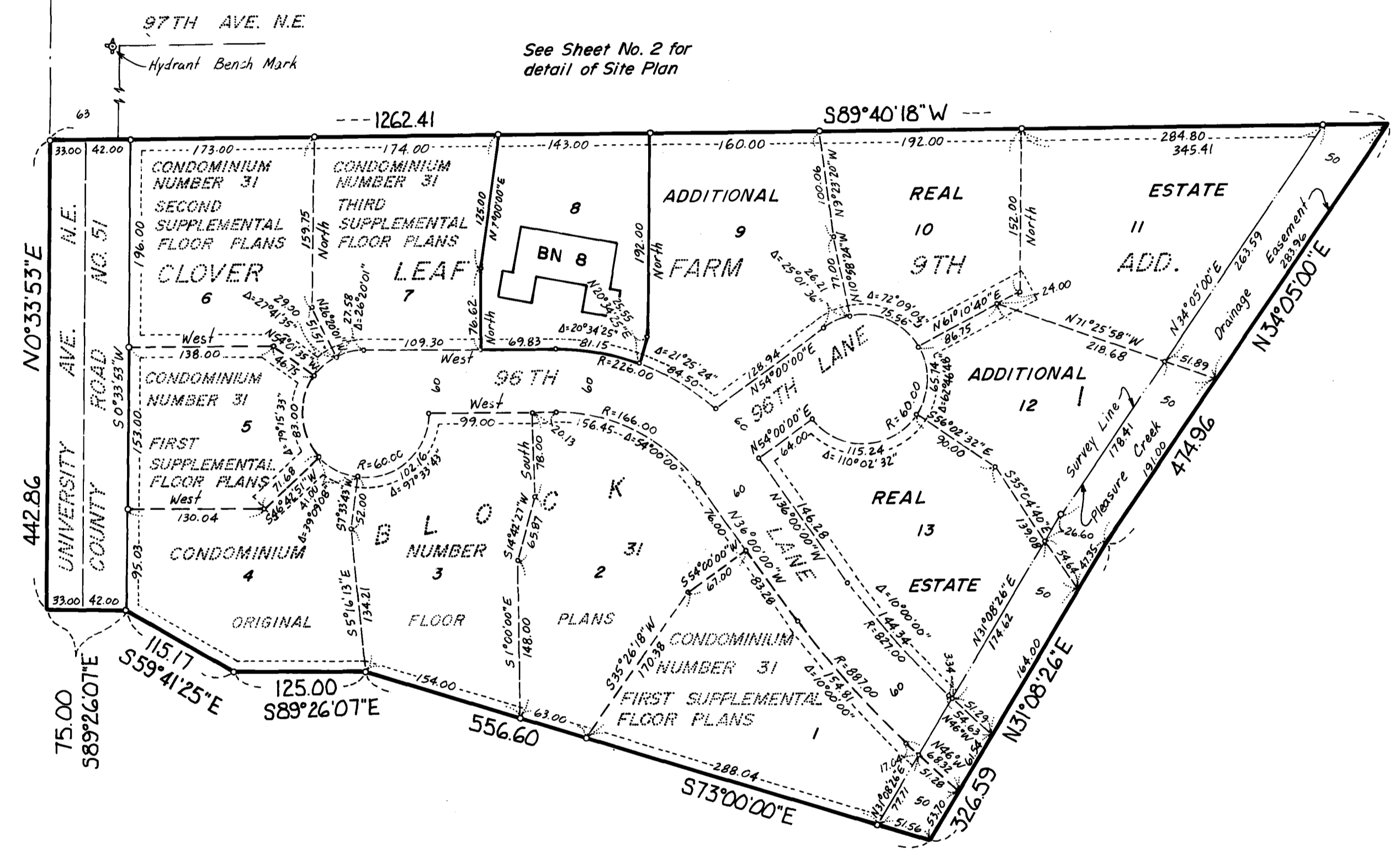
CONDOMINIUM NUMBER 31

CLOVER LEAF FARM CONDOMINIUMS FOURTH SUPPLEMENTAL FLOOR PLANS

THESE FLOOR PLANS HAVE BEEN RECORDED AS PART OF THE DECLARATION FILED AS DOCUMENT NO. 677878 ON THE 25TH DAY OF JUNE 1985, ANOKA COUNTY RECORDER



SITE PLAN



- LEGEND
- Denotes iron monument
 - BN Denotes Building Number
- Benchmark: Top nut hydrant at the southeast Quad. University Ave. N.E. and 97TH Ave. N.E. Elevation= 912.25 feet (N.G.V.D. 1929)

All units of measure are shown in feet and hundredths of a foot.
For the purposes of this plat, the west line of the Northwest Quarter of the Southwest Quarter of Section 30, Township 31, Range 23, bears North 0 degrees 33 minutes 53 seconds East.

"NO DELINQUENT TAXES AND TRANSFER ENTERED"
June 24 1985
Charles R. Hoffmann
Auditor, Anoka County
BY J.R. Kaminski
Deputy

I HEREBY CERTIFY THAT THE TAXES PAYABLE IN THE YEAR 85 ON THE LANDS DESCRIBED WITHIN ARE PAID.
Donald C. Bailey by Deputy
Anoka County Treasurer

The undersigned, being first duly sworn under oath, certifies and deposes that these FOURTH SUPPLEMENTAL FLOOR PLANS, CONDOMINIUM NUMBER 31, CLOVER LEAF FARM CONDOMINIUMS, being located upon:

Lot 8, Block 1, CLOVER LEAF FARM 9TH ADDITION, according to the plat on file and of record in the Office of the County Recorder, Anoka County, Minnesota.

fully and accurately depicts all information required by Minnesota Statutes Section 515A. 2-110.

Dated this 24th day of June 1985.

Richard H. Cherrier
Richard H. Cherrier, Registered Land Surveyor
Minnesota Registration Number 9064

State of Minnesota
County of Anoka

The foregoing instrument was acknowledged before me this 24th day of June 1985 by Richard H. Cherrier, a registered professional Land Surveyor.

MARILYN E. HEIKES
NOTARY PUBLIC - MINNESOTA
ANOKA COUNTY
My Commission Expires JUNE 02 1989

Marilyn E. Heikes
Notary Public, Anoka County, Minnesota
My commission expires June 2 1989

Harold M. Pierce, a registered professional ARCHITECT for the State of Minnesota, pursuant to Minnesota Statutes Section 515A. 2-101 (b) and (c) does hereby certify that all structural components and mechanical systems serving more than one unit of all buildings containing or comprising any units hereby created are substantially completed consistent with the FOURTH SUPPLEMENTAL FLOOR PLANS, CONDOMINIUM NUMBER 31, CLOVER LEAF FARM CONDOMINIUMS, and that all units are entirely completed consistent with said Floor Plans.

Dated this 19th day of JUNE 1985.

Harold M. Pierce
Harold M. Pierce Registered ARCHITECT
Minnesota Registration Number 10862

State of Minnesota
County of Anoka

The foregoing instrument was acknowledged before me this 19th day of June 1985 by Harold M. Pierce, a registered professional Architect.

MARILYN E. HEIKES
NOTARY PUBLIC - MINNESOTA
ANOKA COUNTY
My Commission Expires JUNE 02 1989

Marilyn E. Heikes
Notary Public, Anoka County, Minnesota
My commission expires June 2 1989

Checked and approved this 24th day of June 1985.

Robert W. Anderson
Anoka County Surveyor

This is a flexible condominium per Minnesota Statute 515A. Additional real estate consists of: Lots 9 thru 13, inclusive, Block 1, CLOVER LEAF FARM 9TH ADDITION, according to the plat on file and of record in the office of the County Recorder, Anoka County, Minnesota.

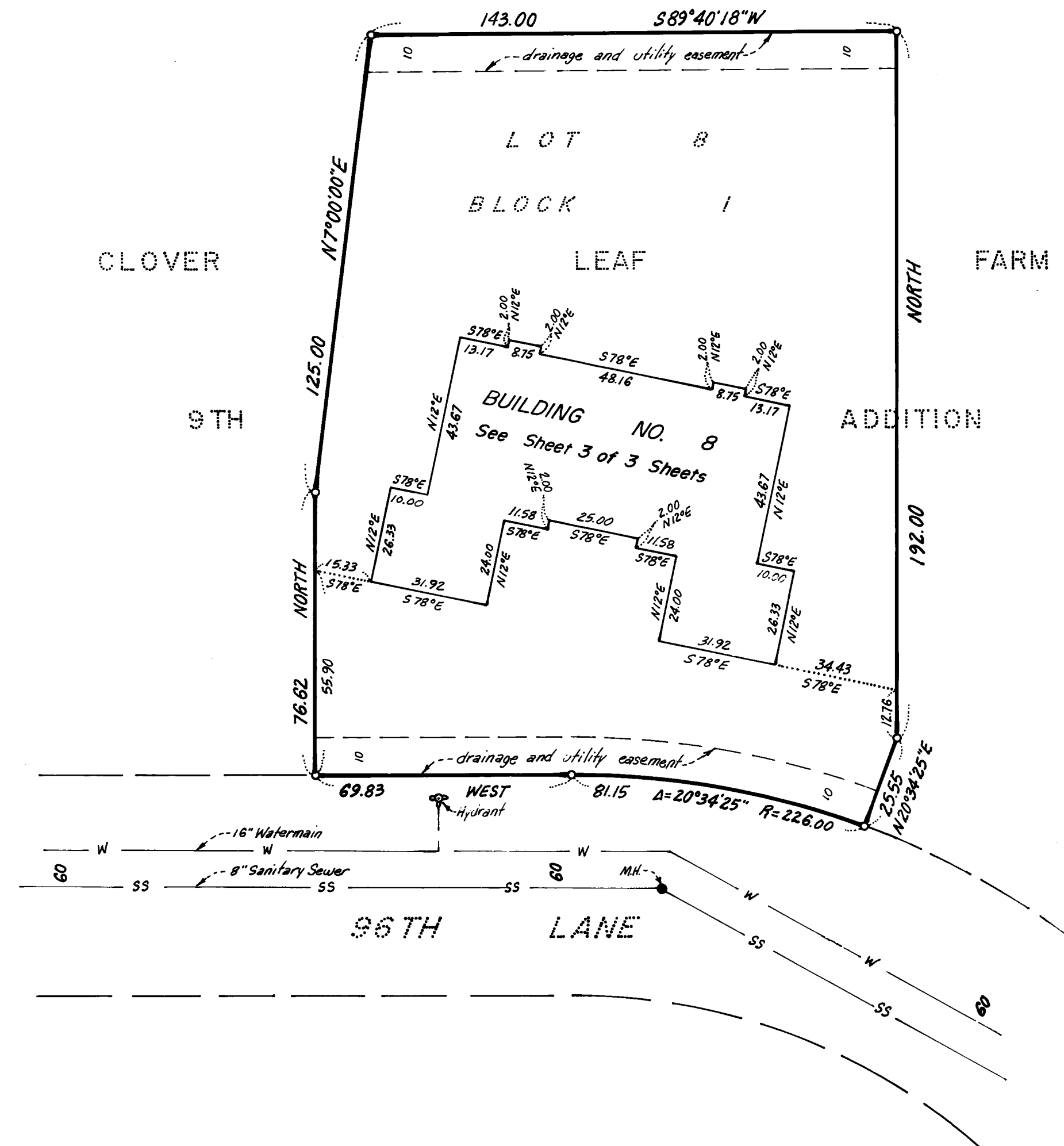
CHERRIER - WINTER & ASSOCIATES, INC.
REGISTERED PROFESSIONAL LAND SURVEYORS

677878
OFFICE OF COUNTY RECORDER
STATE OF MINNESOTA, COUNTY OF ANOKA
I hereby certify that the within instrument was filed in this office for record on the JUN 25 1985 A.D., 19 8 o'clock A.M., and was duly recorded in book 208 page 18
By Deputy
County Recorder

CONDOMINIUM NUMBER 31

CLOVER LEAF FARM CONDOMINIUMS
FOURTH SUPPLEMENTAL FLOOR PLANS

SITE PLAN DETAIL



LEGEND

- o Denotes iron monument
- MH Denotes Sanitary Sewer Manhole

All units of measure are shown in feet and hundredths of a foot.

For the purposes of this plat the west line of the NW 1/4 of the SW 1/4 of Sec. 30, T. 31, R. 23, bears North 0 degrees 33 minutes 53 seconds East.

CONDOMINIUM NUMBER 31

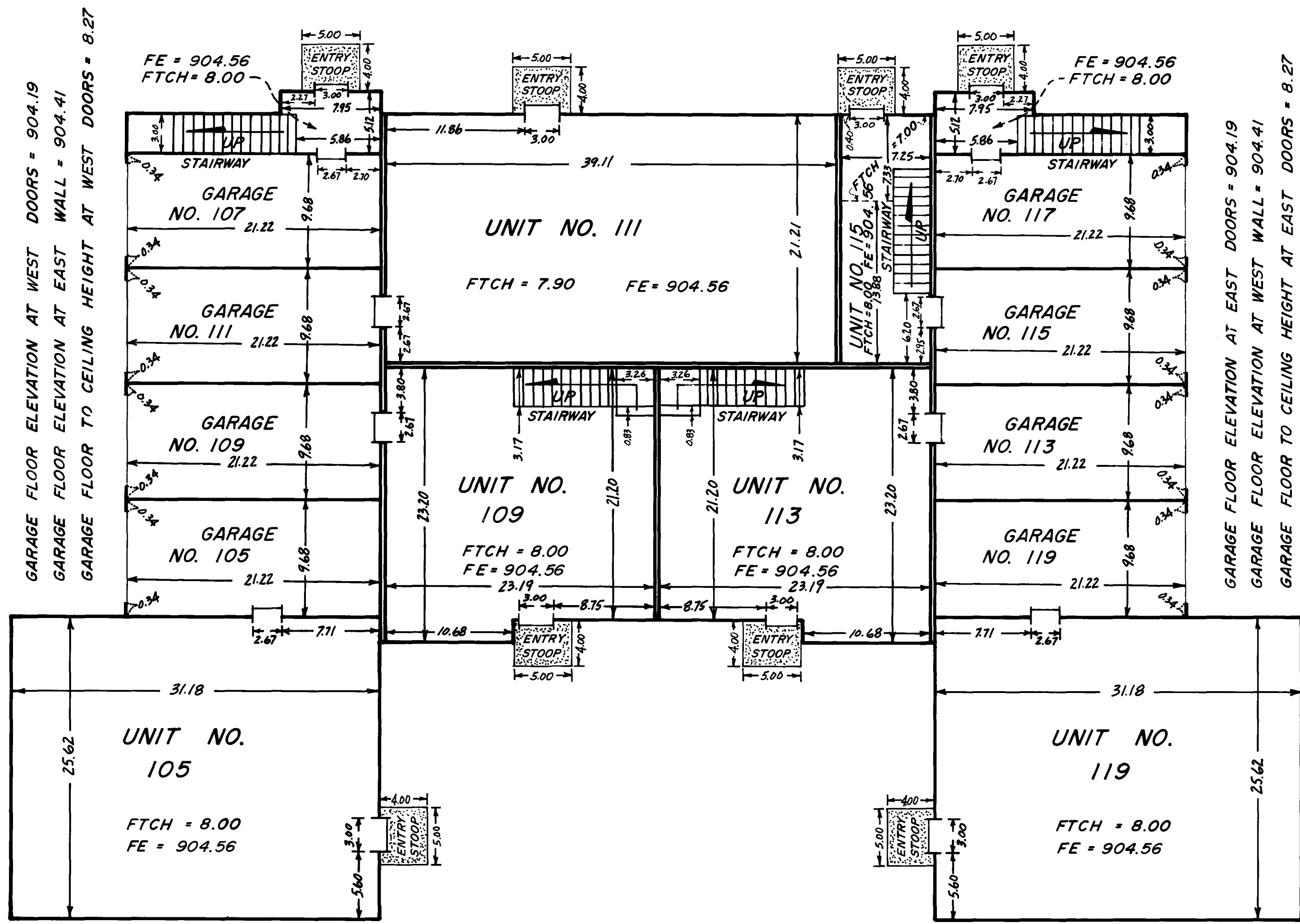
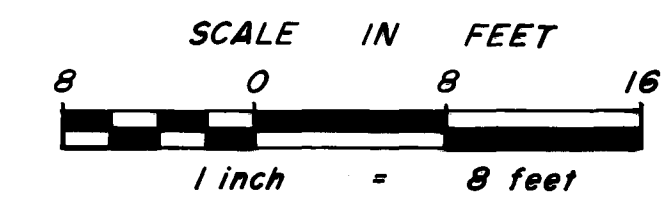
CLOVER LEAF FARM CONDOMINIUMS FOURTH SUPPLEMENTAL FLOOR PLANS

LEGEND

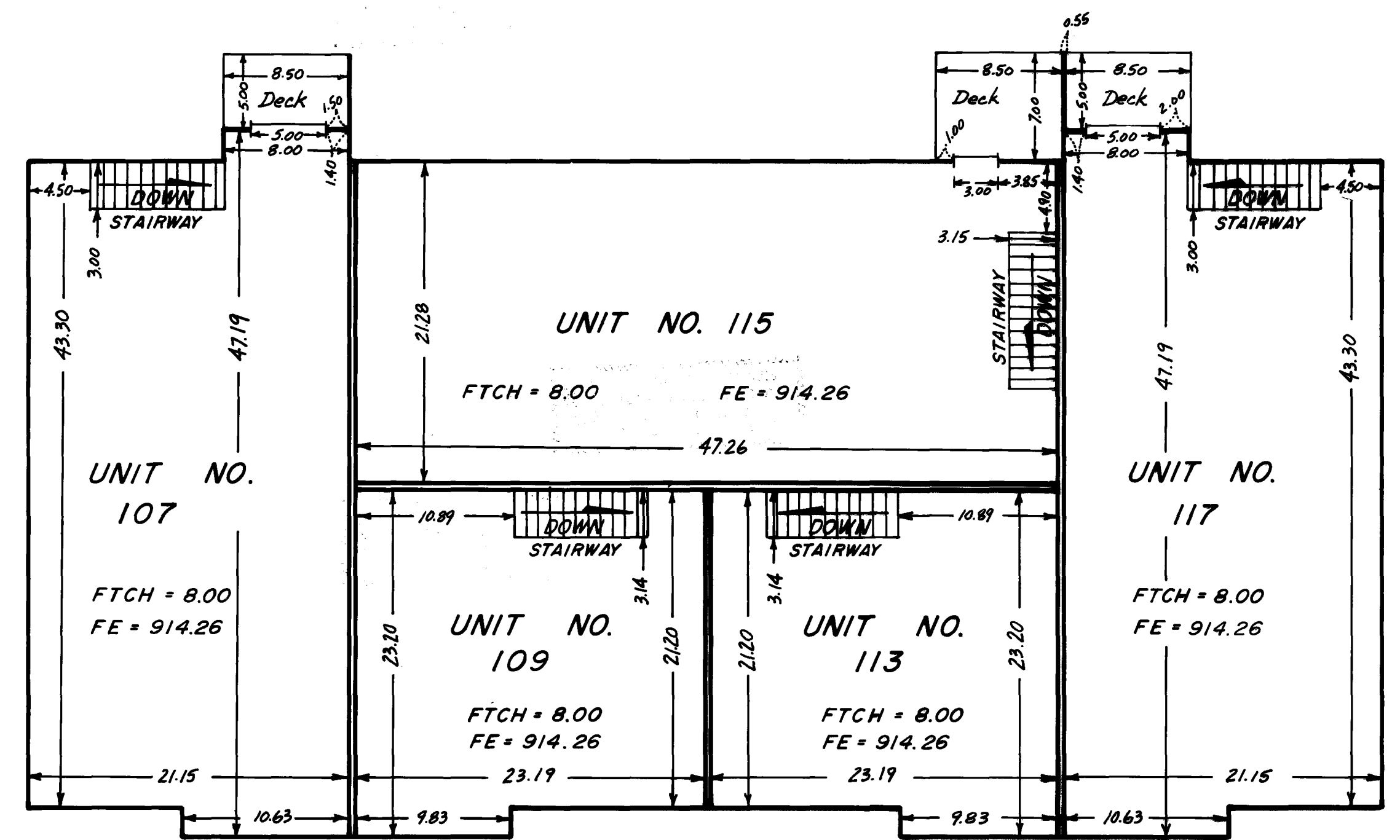
FTCH = Floor To Ceiling Height
 FE = Floor Elevation
 Elevations shown are referenced to a bench mark as denoted on sheet 1 of 3 sheets.
 All units of measure are shown in feet and hundredths of a foot.
 All garages, entry stoops, stairways, patios and decks are limited common elements.

FLOOR PLANS

BUILDING NUMBER 8



LOWER LEVEL



UPPER LEVEL

CHERRIER - WINTER & ASSOCIATES, INC.

REGISTERED PROFESSIONAL LAND SURVEYORS