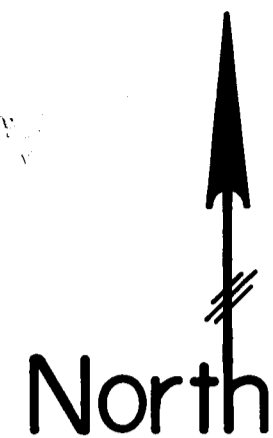


CONDOMINIUM NUMBER 31

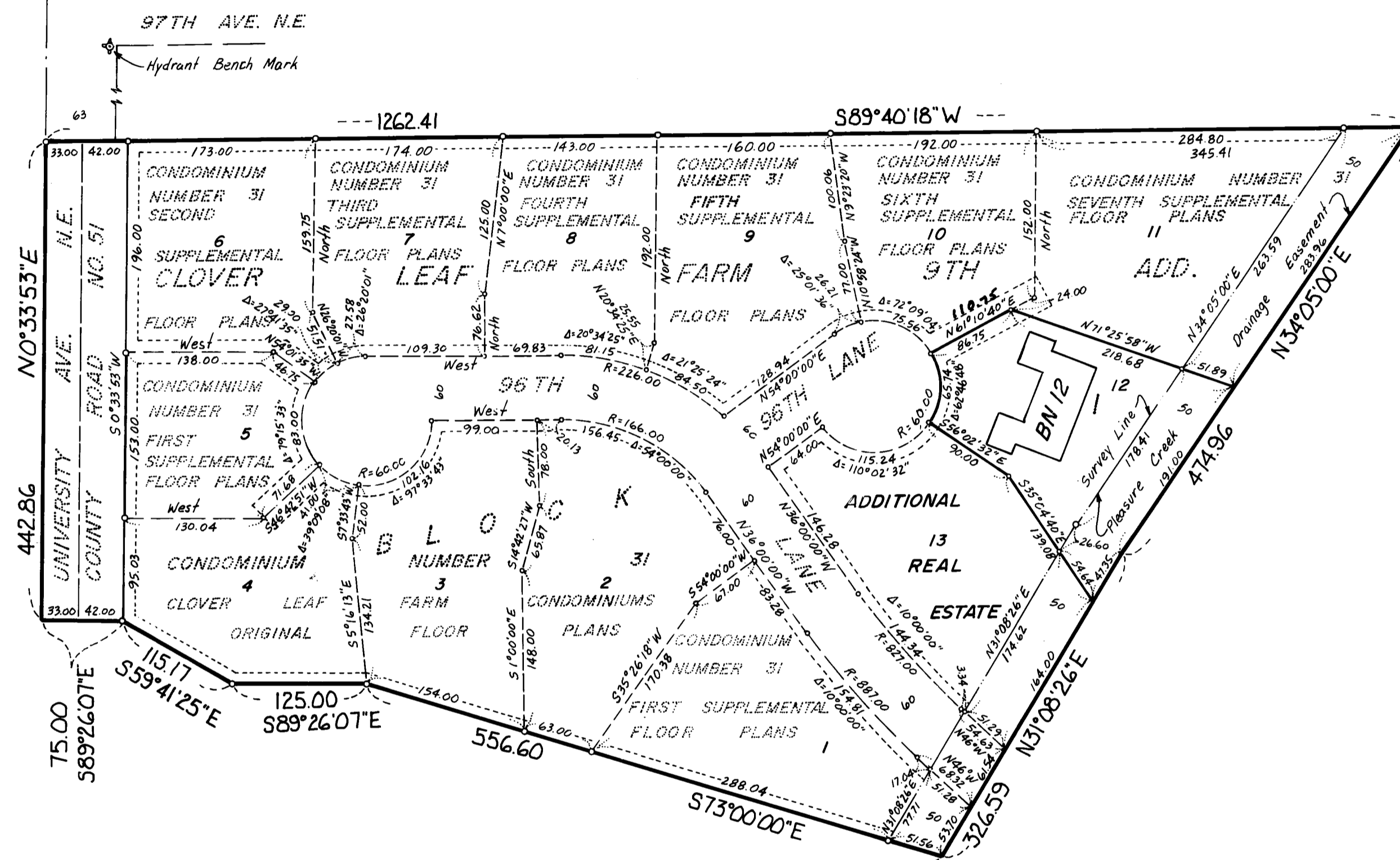
CLOVER LEAF FARM CONDOMINIUMS EIGHTH SUPPLEMENTAL FLOOR PLANS

THESE FLOOR PLANS HAVE BEEN RECORDED AS PART OF THE DECLARATION FILED AS DOCUMENT NO. 702996 ON THE 11 DAY OF MARCH 1986, ANOKA COUNTY RECORDER



100 0 100 200
SCALE: 1 inch = 100 feet

SITE PLAN



LEGEND

o Denotes iron monument

BN Denotes Building Number

Benchmark: Top nut hydrant at the southeast Quad. University Ave. N.E. and 97th Ave. N.E. Elevation= 912.25 feet (N.G.V.D. 1929)

All units of measure are shown in feet and hundredths of a foot.

For the purposes of this plat, the west line of the Northwest Quarter of the Southwest Quarter of Section 30, Township 31, Range 23, bears North 0 degrees 33 minutes 53 seconds East.

The undersigned, being first duly sworn under oath, certifies and deposes that these EIGHTH SUPPLEMENTAL FLOOR PLANS, CONDOMINIUM NUMBER 31, CLOVER LEAF FARM CONDOMINIUMS, being located upon:

Lot 12, Block 1, CLOVER LEAF FARM 9TH ADDITION, according to the plat on file and of record in the Office of the County Recorder, Anoka County, Minnesota.

fully and accurately depicts all information required by Minnesota Statutes Section 515A. 2-110.

Dated this 27th day of September 1985.

Richard H. Cherrier
Richard H. Cherrier, Registered Land Surveyor
Minnesota Registration Number 9064

State of Minnesota
County of Anoka

The foregoing instrument was acknowledged before me this 27th day of September 1985 by Richard H. Cherrier, a registered professional Land Surveyor.

PEGGY KENDALL
NOTARY PUBLIC - MINNESOTA
ANOKA COUNTY
My Commission Expires Jan. 21, 1991

Peggy Kendall
Notary Public, Anoka County, Minnesota
My commission expires Jan. 21, 1991

Harold M. Pierce, a registered professional Architect for the State of Minnesota, pursuant to Minnesota Statutes Section 515A. 2-101 (b) and (c) does hereby certify that all structural components and mechanical systems serving more than one unit of all buildings containing or comprising any units hereby created are substantially completed consistent with the EIGHTH SUPPLEMENTAL FLOOR PLANS, CONDOMINIUM NUMBER 31, CLOVER LEAF FARM CONDOMINIUMS, and that all units are entirely completed consistent with said Floor Plans.

Dated this 27th day of SEPTEMBER 1985.

Harold M. Pierce
Harold M. Pierce Registered Architect
Minnesota Registration Number 10862

State of Minnesota
County of Anoka

The foregoing instrument was acknowledged before me this 27th day of September 1985 by Harold M. Pierce, a registered professional Architect.

PEGGY KENDALL
NOTARY PUBLIC - MINNESOTA
ANOKA COUNTY
My Commission Expires Jan. 21, 1991

Peggy Kendall
Notary Public, Anoka County, Minnesota
My commission expires Jan. 21, 1991

Checked and approved this 10th day of March 1986.

Poland W. Anderson
Anoka County Surveyor

This is a flexible condominium per Minnesota Statute 515A. Additional real estate consists of: Lot 13, Block 1, CLOVER LEAF FARM 9TH ADDITION, according to the plat on file and of record in the office of the County Recorder, Anoka County, Minnesota.

"NO DELINQUENT TAXES AND TRANSFER ENTERED"

March 10 1986

Charles R. Peterson
Auditor, Anoka County

BY James M. Sawyer
Deputy

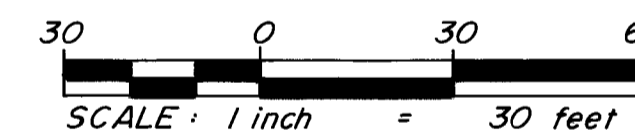
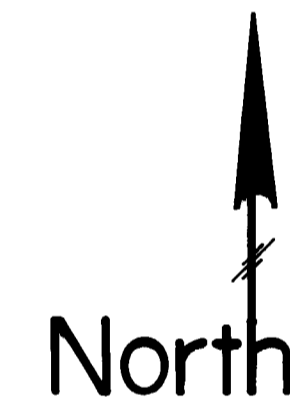
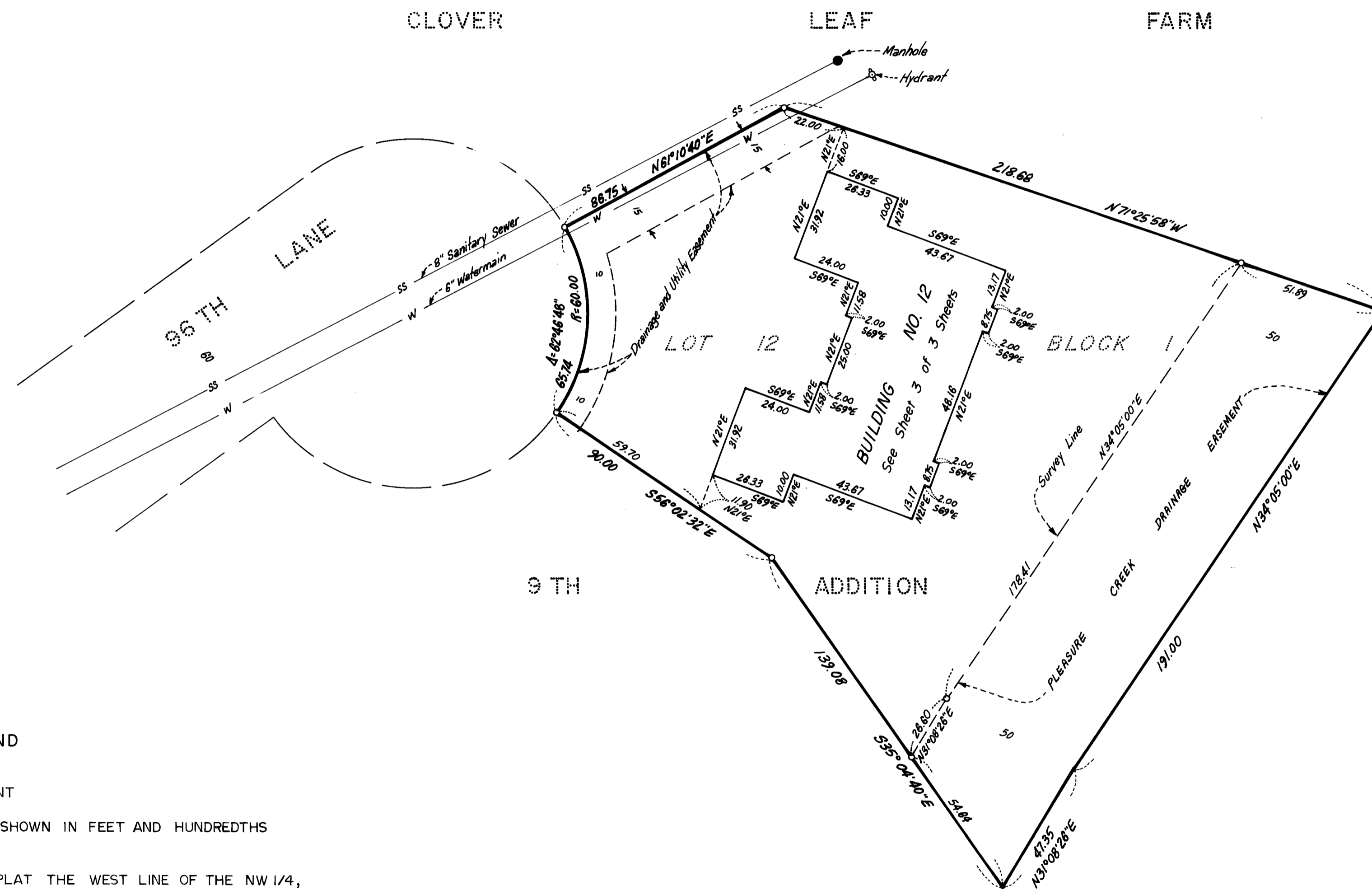
702996

CLERK OF COUNTY RECORDS
STATE OF MINNESOTA, COUNTY OF ANOKA
I hereby certify that the within instrument was filed in this office for record on the MAR 11 1986
4:30 o'clock P. M., and was duly recorded in Book 209 Condominiums Page 27
Paul J. Swanson
County Recorder

CONDOMINIUM NUMBER 31

CLOVER LEAF FARM CONDOMINIUMS EIGHTH SUPPLEMENTAL FLOOR PLANS

SITE PLAN DETAIL



LEGEND

- DENOTES IRON MONUMENT
- ALL UNITS OF MEASURE ARE SHOWN IN FEET AND HUNDREDTHS OF A FOOT.
- FOR THE PURPOSES OF THIS PLAT THE WEST LINE OF THE NW 1/4, SW 1/4 OF SEC. 30, T.31, R.23, IS ASSUMED TO BEAR N0°33'53"E

CONDOMINIUM NUMBER 31

CLOVER LEAF FARM CONDOMINIUMS
EIGHTH SUPPLEMENTAL FLOOR PLANS

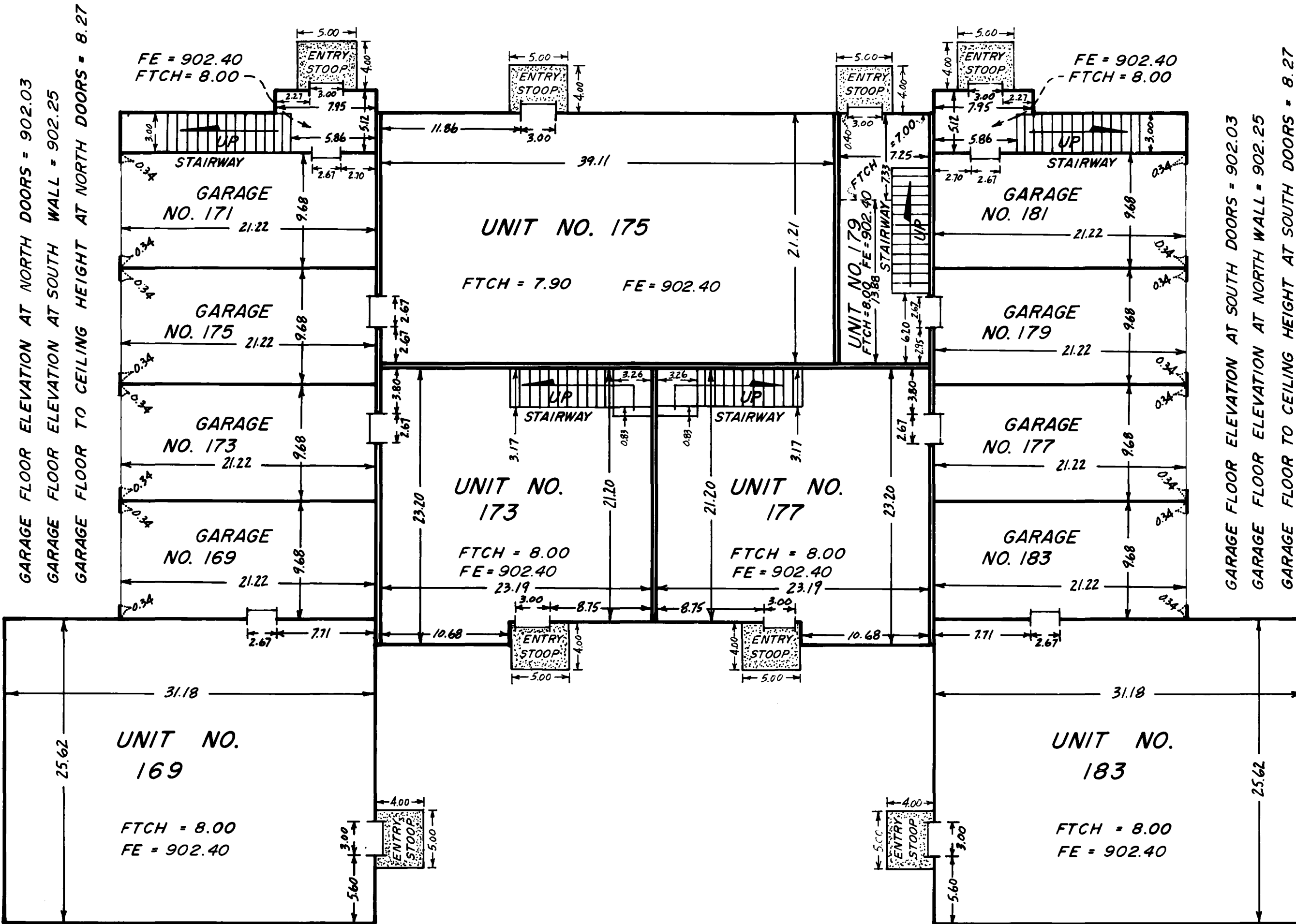
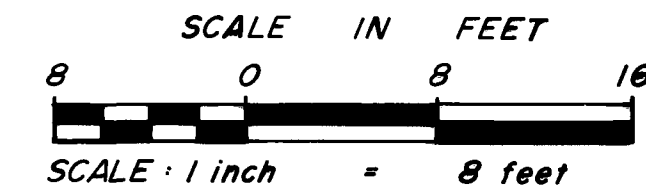


LEGEND

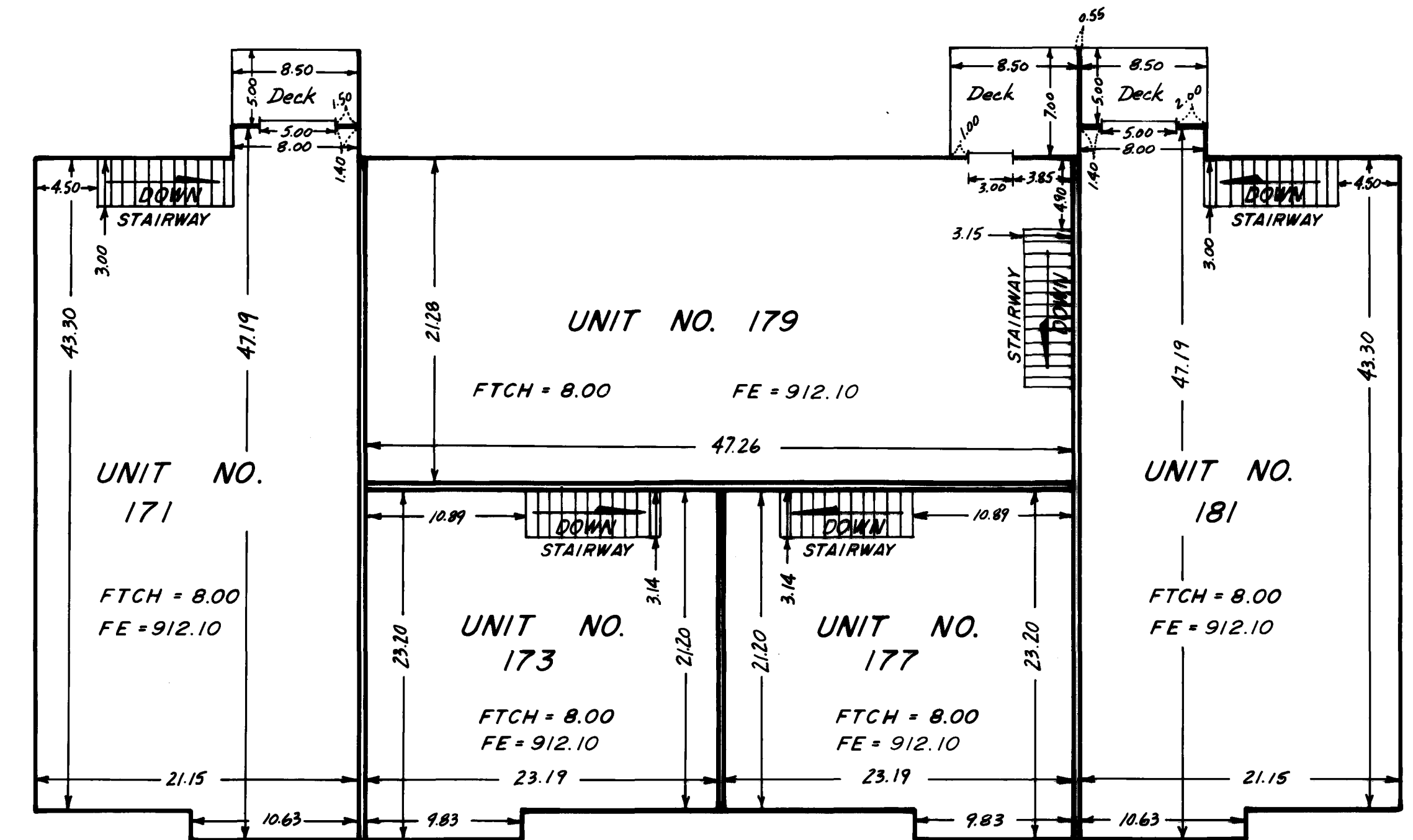
FTCH = Floor To Ceiling Height
FE = Floor Elevation
Elevations shown are referenced to a bench mark as denoted on sheet 1 of 3 sheets.
All units of measure are shown in feet and hundredths of a foot.
All garages, entry stoops, stairways, patios and decks are limited common elements.

FLOOR PLANS

BUILDING NUMBER 12



LOWER LEVEL



UPPER LEVEL

CHERRIER - WINTER & ASSOCIATES, INC.

REGISTERED PROFESSIONAL LAND SURVEYORS