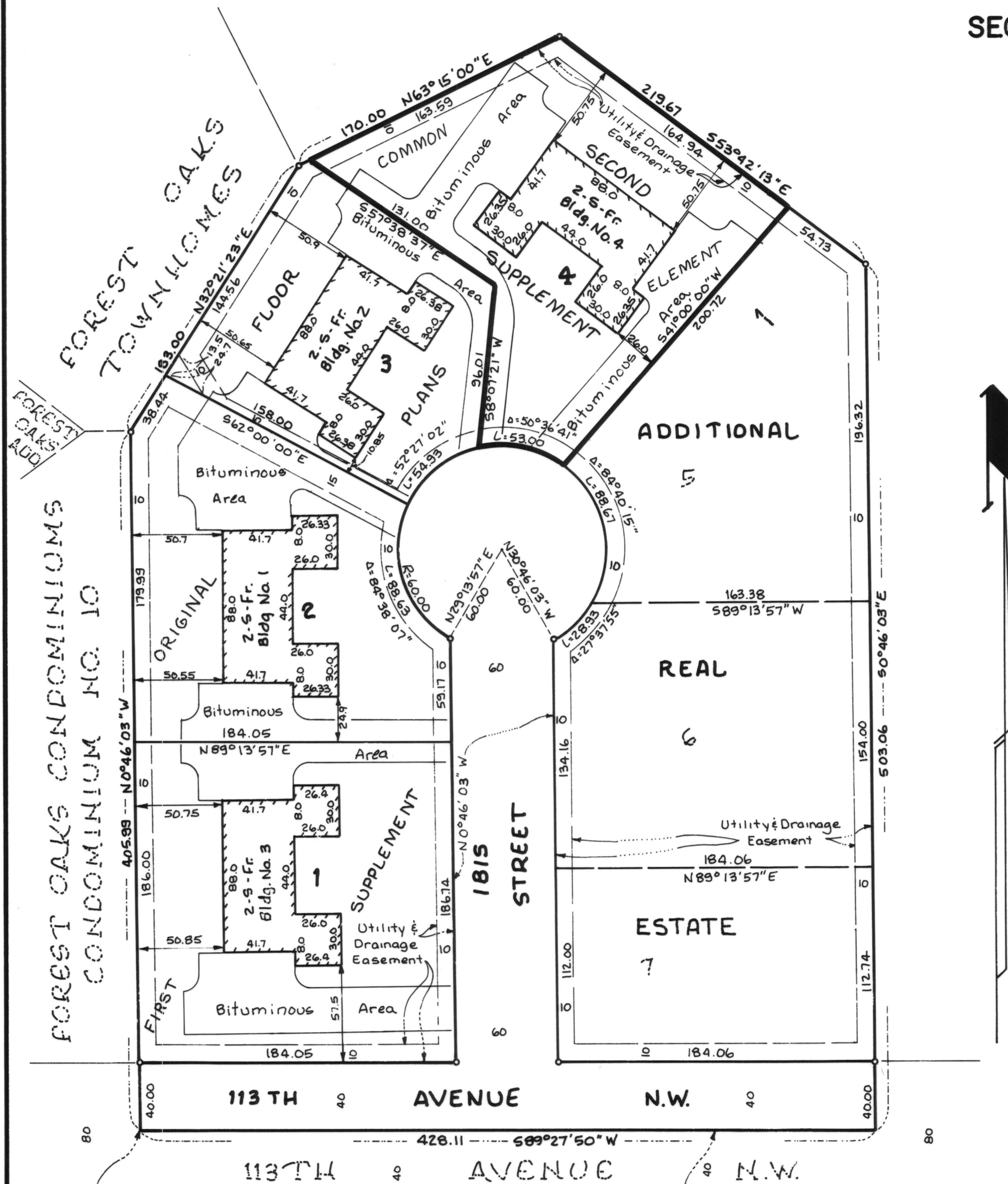


# CONDOMINIUM NUMBER 32 FOREST OAKS CARRIAGE HOMES II A CONDOMINIUM

## SECOND SUPPLEMENT SITE PLAN

**LOT SURVEYS COMPANY, INC.**  
LAND SURVEYORS



The undersigned, being first duly sworn under oath, certifies and deposes that these Second Supplemental Floor Plans of Condominium No. 32, Forest Oaks Carriage Homes II, a Condominium, being located upon

Lot 4, Block 1, Forest Oaks Carriage Homes

And the Additional Real Estate described as follows:

Lots 5, 6, and 7, Block 1, Forest Oaks Carriage Homes

fully and accurately depicts all information required by Minnesota Statutes Section 515A.2-110. Dated this 27<sup>TH</sup> day of SEPTEMBER 1984.

*Raymond A. Prasch*  
Raymond A. Prasch, Registered Land Surveyor  
Minnesota Registration No. 6743

State of Minnesota

County of Hennepin The foregoing instrument was acknowledged before me this 27<sup>TH</sup> day of SEPTEMBER 1984, by Raymond A. Prasch, a registered professional land surveyor.



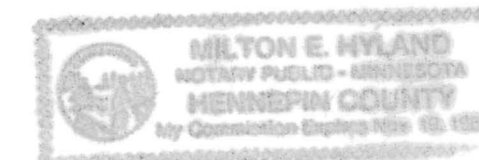
*Milton E. Hyland*  
Milton E. Hyland, Notary Public, Hennepin County, Minnesota  
My Commission Expires November 19, 1987

HAROLD M. PIERCE a registered professional ARCHITECT for the State of Minnesota pursuant to Minnesota Statutes Section 515A.2-101 (b) and (c) does hereby certify that all structural components and mechanical systems serving more than one unit of all buildings containing or comprising any units hereby created are substantially completed consistent with the Second Supplemental Floor Plans for Condominium No. 32, Forest Oaks Carriage Homes II, a Condominium, and that all the units are entirely completed consistent with said Floor Plans. Dated this 2<sup>ND</sup> day of OCTOBER 1984.

*Harold M. Pierce*  
Minnesota Registration No. 10862

State of Minnesota

County of HENNEPIN The foregoing instrument was acknowledged before me this 2<sup>ND</sup> day of OCTOBER 1984, by HAROLD M. PIERCE a registered professional ARCHITECT.



*Milton E. Hyland*  
Notary Public, HENN County, Minnesota  
My Commission Expires Nov. 19, 1987  
MILTON E. Hyland

Checked and approved this 2<sup>nd</sup> day of October 1984.

I HEREBY CERTIFY THAT THE TAXES PAYABLE IN THE YEAR 1984 ON THE LANDS DESCRIBED WITHIN ARE PAID  
*Donald C. Biechy*  
Anoka County Treasurer

"NO DELINQUENT TAXE AND TRANSFER ENTERED"

Oct 2 1984

*Charles R. Lofgren*  
Auditor, Anoka County

BY *F.R. Kammer*  
Deputy

*Roland W. Anderson*  
Anoka County Surveyor

655239  
OFFICE OF COUNTY RECORDS  
STATE OF MINNESOTA, COUNTY OF ANOKA  
I hereby certify that the within instrument was filed in this office for record on the OCT 2 1984 A.D., 1984.  
In book 2 of 6 page 6  
CONDOMINIUMS  
*T.D. Crandall*  
County Recorder  
By *J.C. Walderness*  
Deputy

SW corner of the SE 1/4 of the NE 1/4 Sec 15, T31, R24.

South line of the SE 1/4 of the NE 1/4 Sec 15



For the purposes of this plat the East line of FOREST OAKS CONDOMINIUM is assumed to bear N0°46'03"W

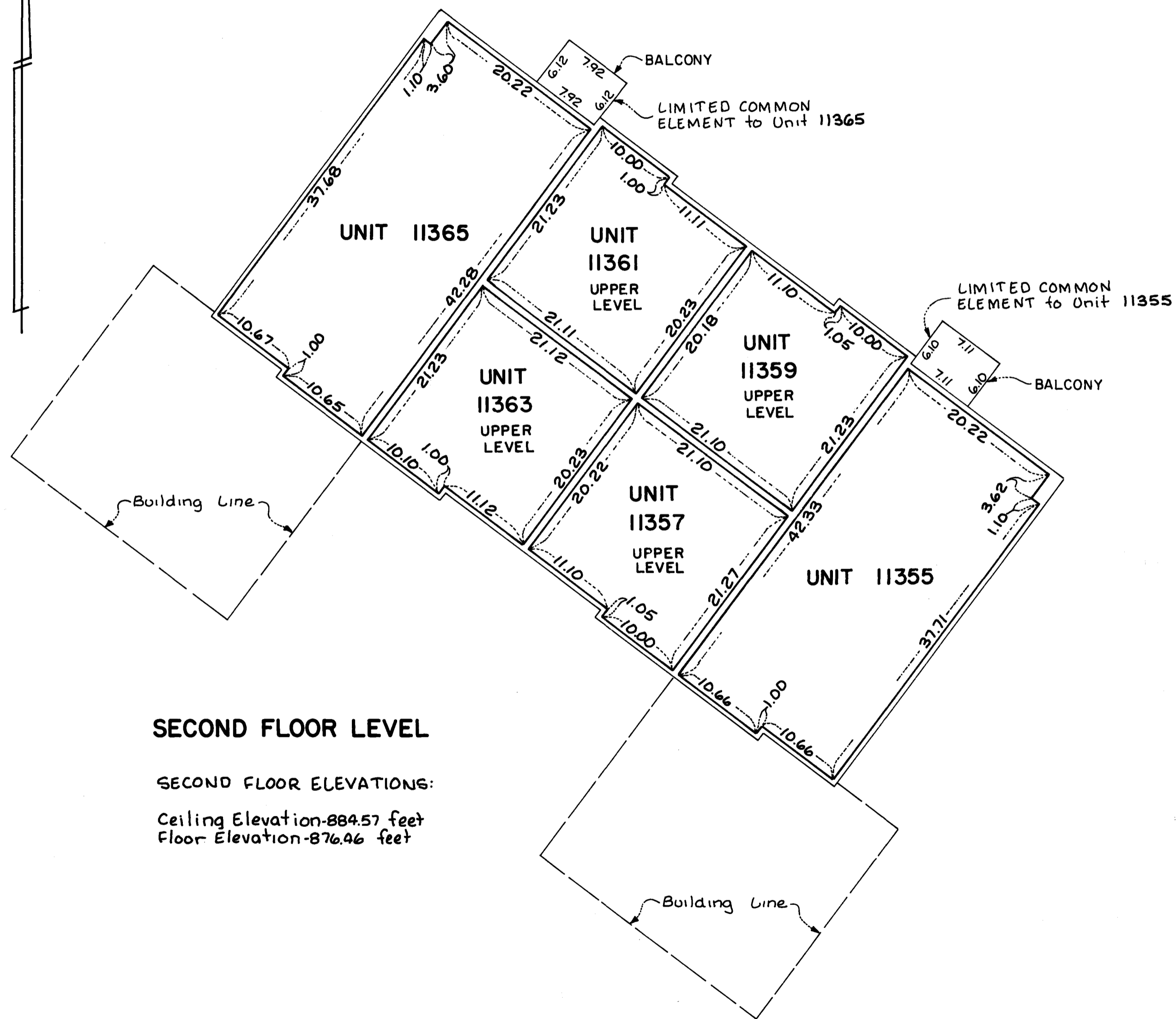
Benchmark: Top of Manhole 20 feet north of northwest corner Lot 2 Block 1 FOREST OAKS CARRIAGE HOMES Elev. = 866.33 (NGVD 1929)

o Denotes Iron Monument

# CONDOMINIUM NUMBER 32 FOREST OAKS CARRIAGE HOMES II A CONDOMINIUM

BUILDING NO. 4

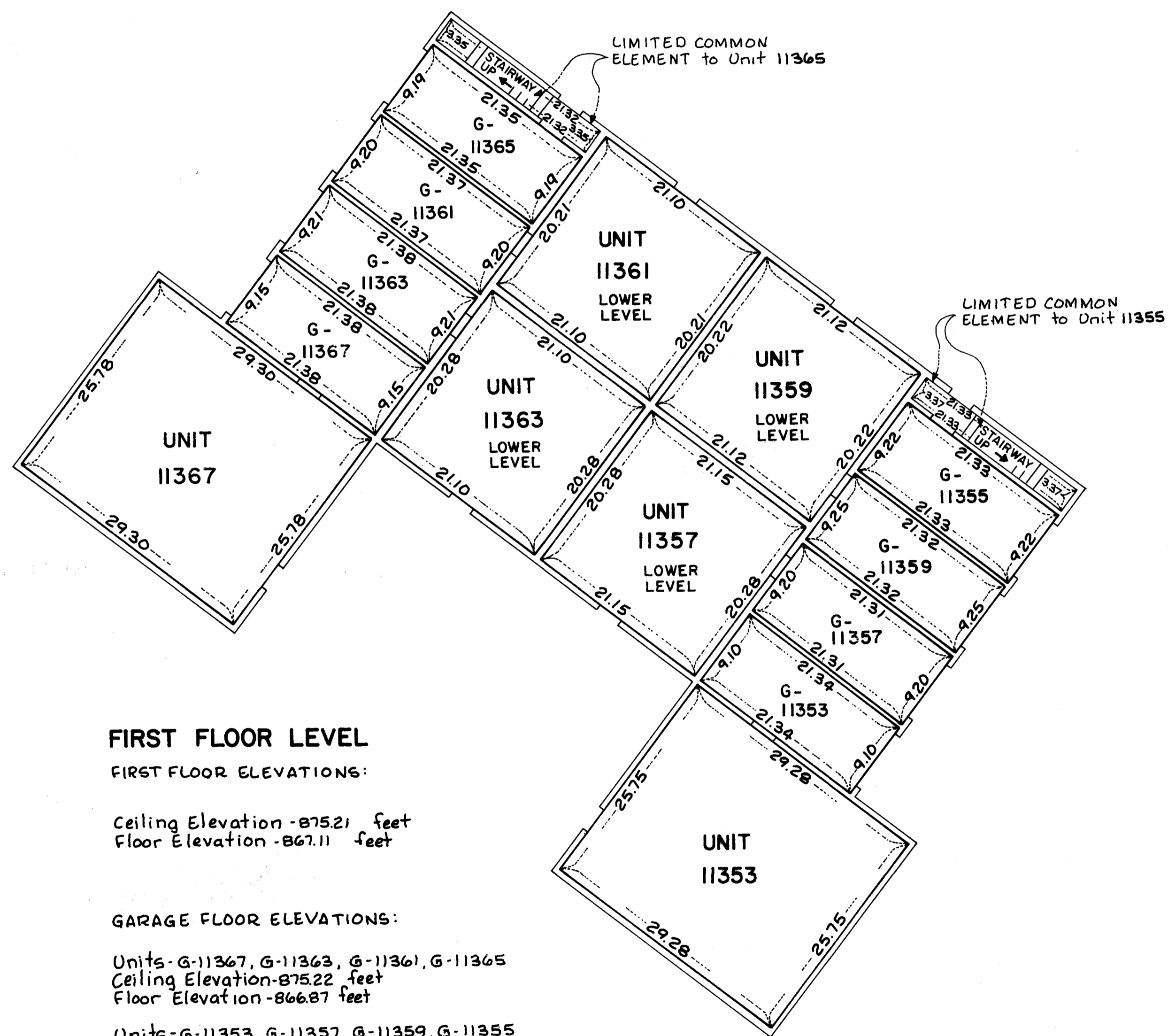
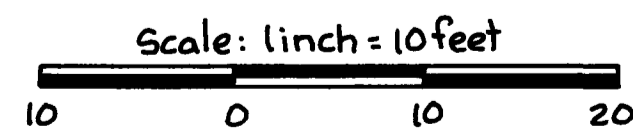
LOT SURVEYS COMPANY, INC.  
LAND SURVEYORS



### SECOND FLOOR LEVEL

#### SECOND FLOOR ELEVATIONS:

Ceiling Elevation - 884.57 feet  
Floor Elevation - 876.46 feet



### FIRST FLOOR LEVEL

#### FIRST FLOOR ELEVATIONS:

Ceiling Elevation - 875.21 feet  
Floor Elevation - 867.11 feet

#### GARAGE FLOOR ELEVATIONS:

Units - G-11367, G-11363, G-11361, G-11365  
Ceiling Elevation - 875.22 feet  
Floor Elevation - 866.87 feet

Units - G-11353, G-11357, G-11359, G-11355  
Ceiling Elevation - 875.22 feet  
Floor Elevation - 866.87 feet

Measurements shown are from inside stud wall to inside stud wall.

Elevations shown are referenced to a Benchmark shown on the Site Plan.