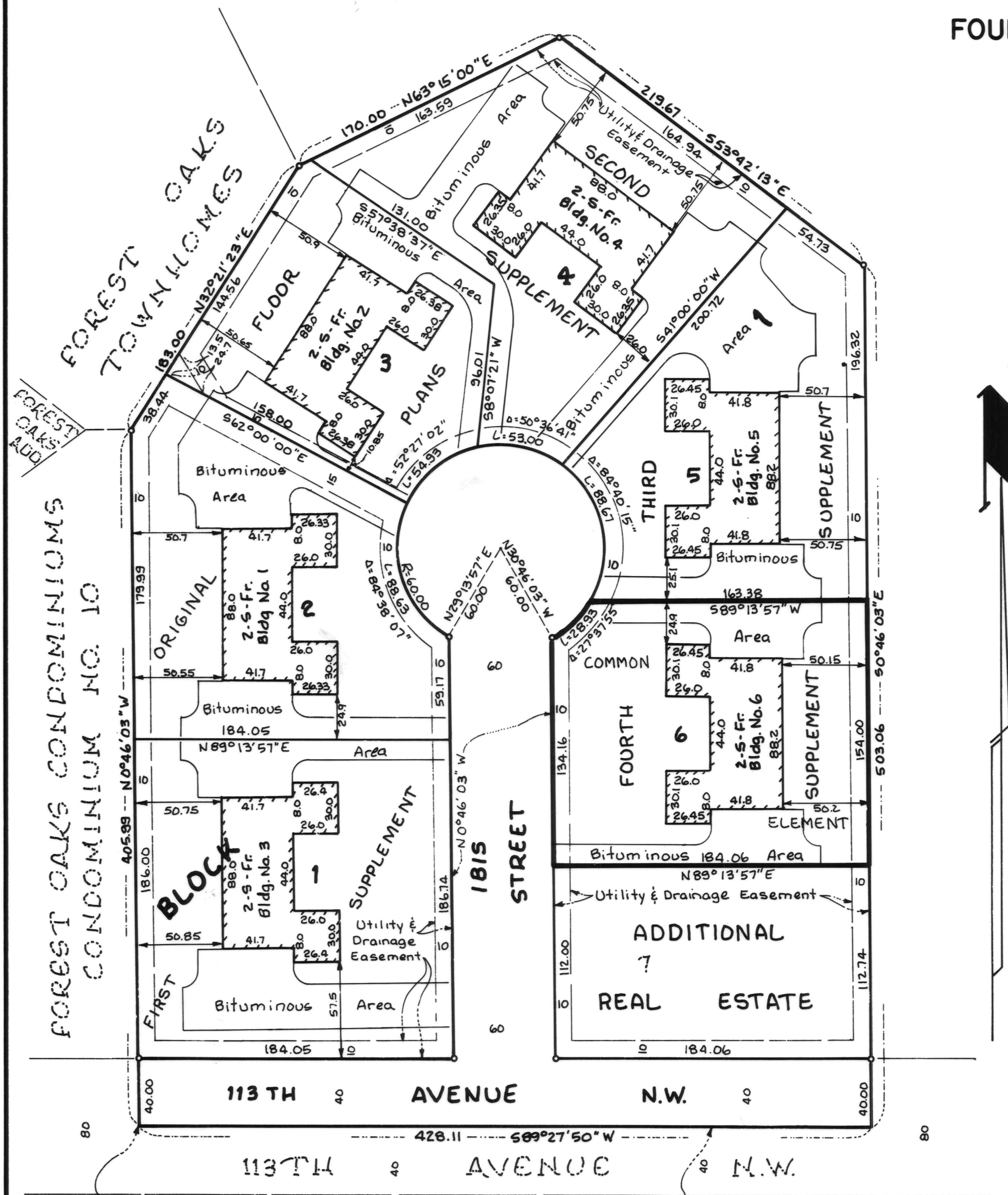


CONDOMINIUM NUMBER 32 FOREST OAKS CARRIAGE HOMES II A CONDOMINIUM

FOURTH SUPPLEMENT SITE PLAN

LOT SURVEYS COMPANY, INC.
LAND SURVEYORS

663795
OFFICE OF COUNTY ARCHIVAL
COUNTY OF ANOKA, COUNTY OF ANOKA
I hereby certify that the above instrument was filed in this office for record on the 22nd day of JAN 22 1985, A.D. 1985.
1:40
in Book 2 of page 8
CONDOMINIUMS
Fred J. Cendall
County Recorder
988 Hollerness
Duluth



The undersigned, being first duly sworn under oath, certifies and deposes that these Fourth Supplemental Floor Plans of Condominium No. 32, Forest Oaks Carriage Homes II, a Condominium, being located upon Lot 6, Block 1, Forest Oaks Carriage Homes And the Additional Real Estate described as follows: Lot 7, Block 1, Forest Oaks Carriage Homes fully and accurately depicts all information required by Minnesota Statutes Section 515A.2-110. Dated this 3RD day of JANUARY 1985.

Raymond A. Prasch
Raymond A. Prasch, Registered Land Surveyor
Minnesota Registration No. 6743

State of Minnesota
County of Hennepin The foregoing instrument was acknowledged before me this 3RD day of JANUARY 1985, by Raymond A. Prasch, a registered land surveyor.



Milton E. Hyland
Milton E. Hyland, Notary Public, Hennepin County, Minnesota
My Commission Expires November 19, 1987

HAROLD M. PIERCE a registered professional ARCHITECT for the State of Minnesota pursuant to Minnesota Statutes Section 515A.2-101 (b) and (c) does hereby certify that all structural components and mechanical systems serving more than one unit of all buildings containing or comprising any units hereby created are substantially completed consistent with the Fourth Supplemental Floor Plans for Condominium No. 32, Forest Oaks Carriage Homes II, a Condominium, and that all the units are entirely completed consistent with said Floor Plans. Dated this 17TH day of JANUARY 1985.

Harold M. Pierce
Minnesota Registration No. 10662

State of Minnesota
County of HENNEPIN The foregoing instrument was acknowledged before me this 17th day of JANUARY 1985, by HAROLD M. PIERCE a registered professional Architect



Milton E. Hyland
Notary Public, HENNEPIN County, Minnesota
My Commission Expires Nov. 19, 1987

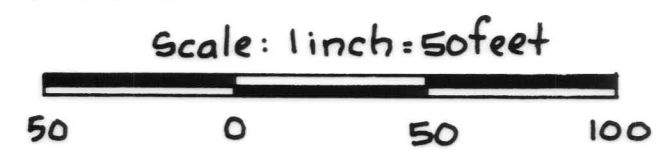
Checked and approved this 21st day of Jan 1985.

I HEREBY CERTIFY THAT THE TAXES PAYABLE IN THE YEAR 1985 ON THE LANDS DESCRIBED WITHIN ARE PAID
Donald C. Bailey, Jr.
Anoka County Treasurer

"NO DELINQUENT TAXES AND TRANSFER ENTERED"
JAN 21 1985
Charles R. Sabelko
Auditor, Anoka County
BY *Raymond W. Anderson*
Deputy

Roland W. Anderson
Anoka County Surveyor by deputy *Mark D. Beck*

SW corner of the SE 1/4 of the NE 1/4 Sec 15, T31, R24.
South line of the SE 1/4 of the NE 1/4 Sec 15



For the purposes of this plat the East line of FOREST OAKS CONDOMINIUM is assumed to bear N0°46'03"W

Benchmark: Top of Manhole 20 feet north of northwest corner Lot 2 Block 1 FOREST OAKS CARRIAGE HOMES Elev. = 866.33 (NGVD 1929)

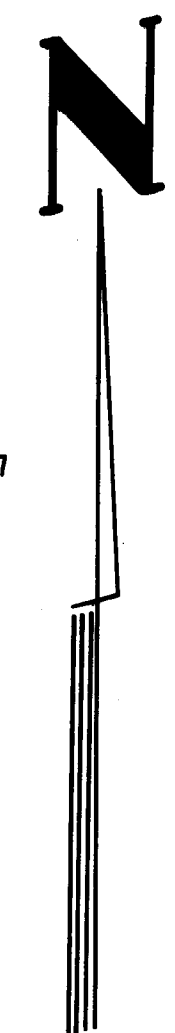
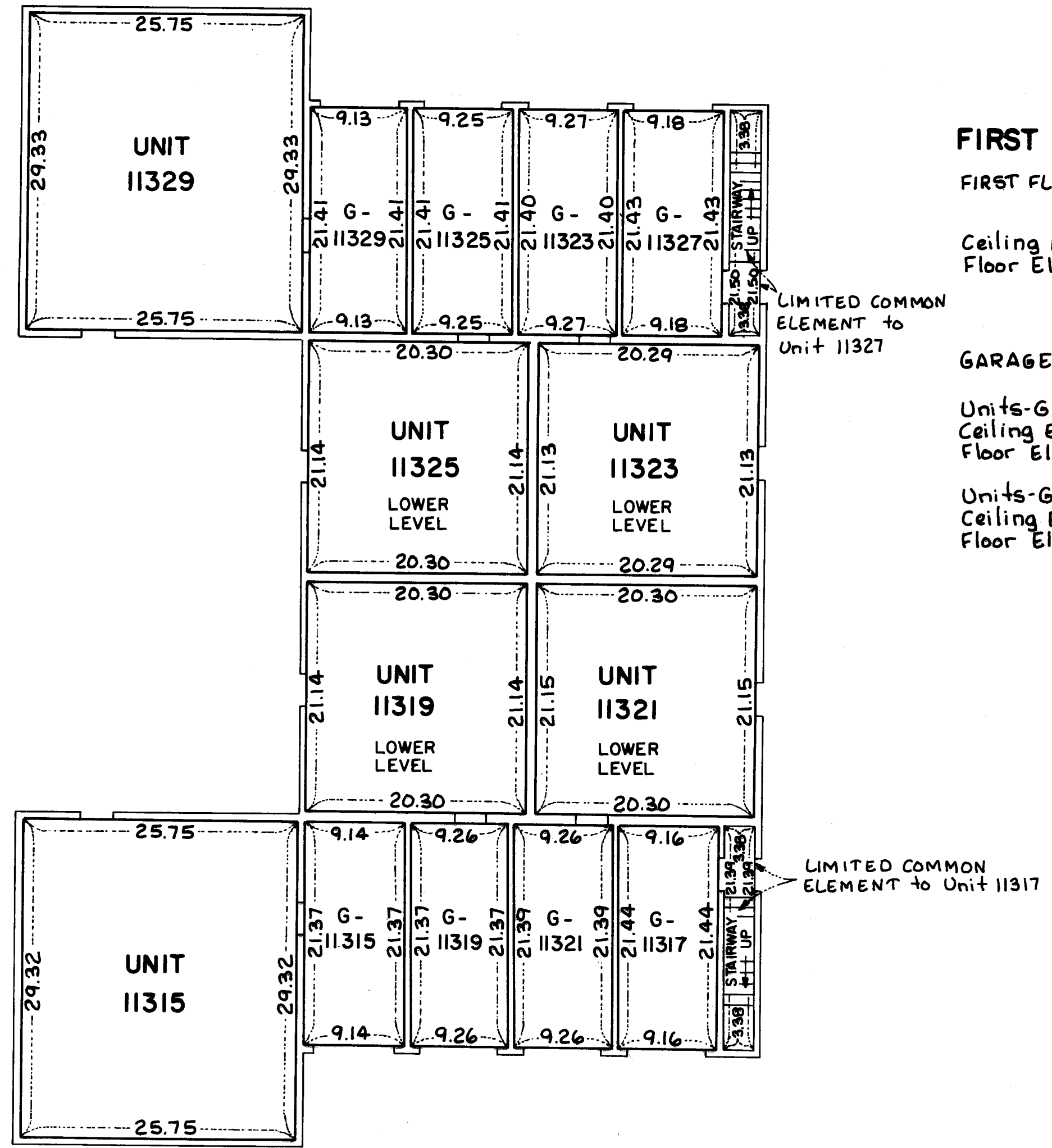
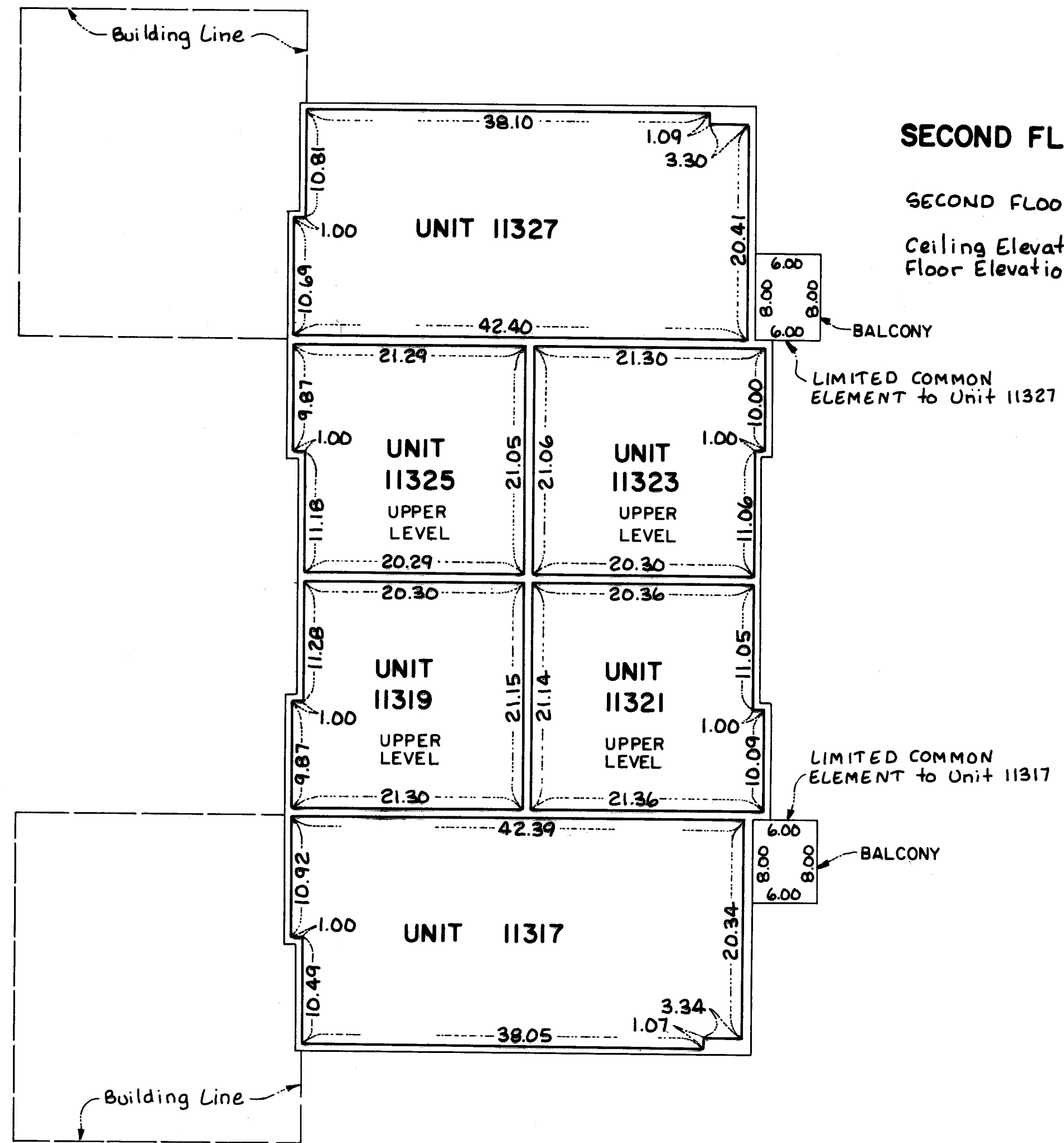
o Denotes Iron Monument

CONDOMINIUM NUMBER 32 FOREST OAKS CARRIAGE HOMES II A CONDOMINIUM

BUILDING NO. 6

LOT SURVEYS COMPANY, INC.
LAND SURVEYORS

FOURTH SUPPLEMENTAL FLOOR PLANS



Elevations shown are referenced to a Benchmark shown on the Site Plan.

Measurements shown are from inside stud wall to inside stud wall.

