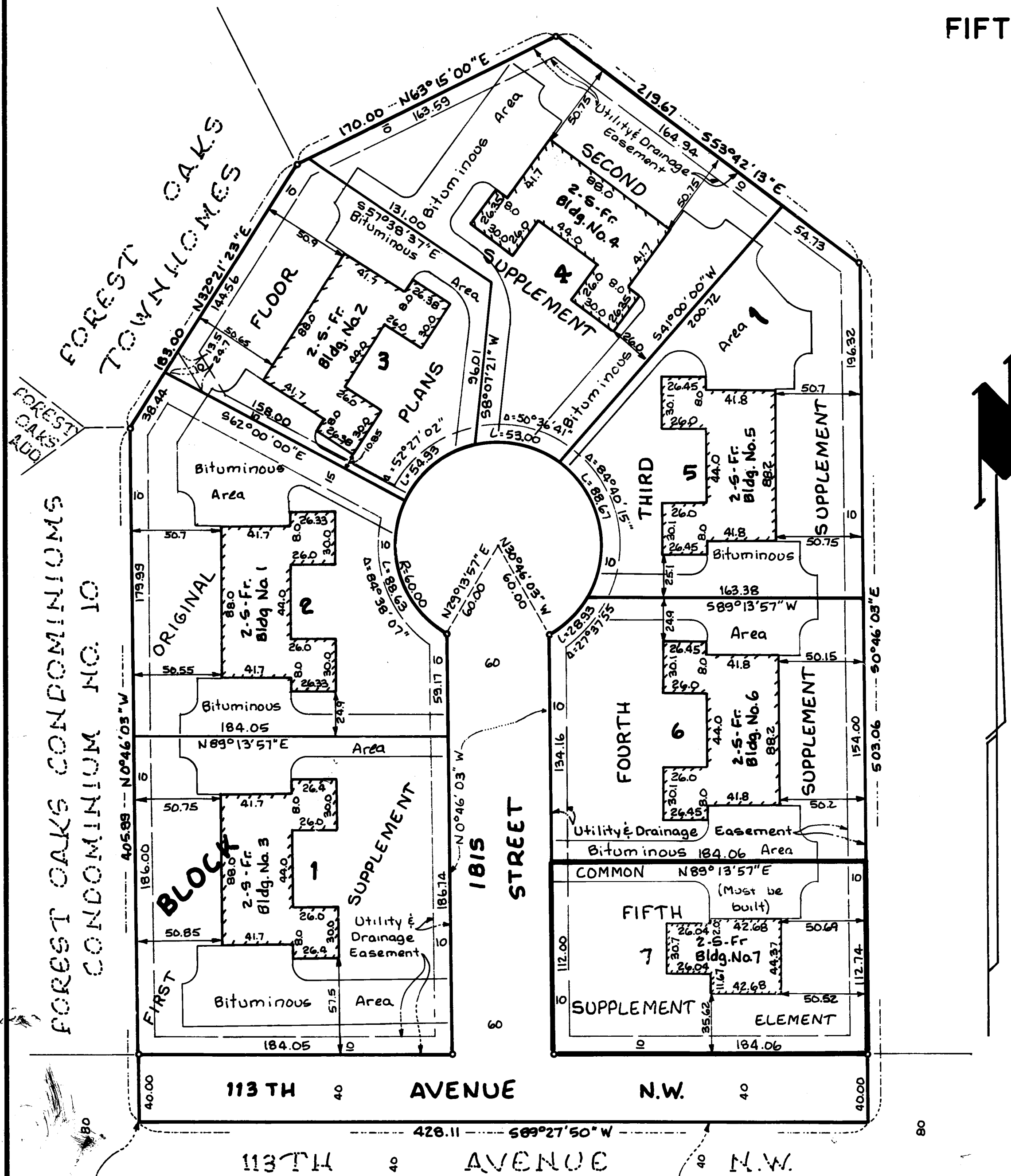


CONDOMINIUM NUMBER 32 FOREST OAKS CARRIAGE HOMES II A CONDOMINIUM

These Fifth Supplemental Floor Plans are part of the Declaration
filed or recorded as Document No. 670649 on this
day of APR 9 1985, 1985.

FIFTH SUPPLEMENT
SITE PLAN

LOT SURVEYS COMPANY, INC.
LAND SURVEYORS



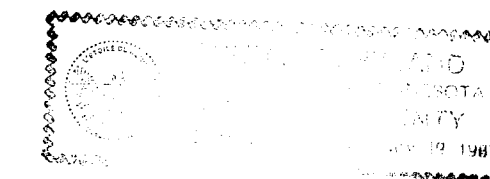
The undersigned, being first duly sworn under oath, certifies and deposes that these Fifth Supplemental Floor Plans of Condominium No. 32, Forest Oaks Carriage Homes II, a Condominium, being located upon

Lot 7, Block 1, Forest Oaks Carriage Homes

fully and accurately depicts all information required by Minnesota Statutes Section 515A.2-110. Dated this 5TH day of APRIL 1985.

Raymond A. Prasch
Raymond A. Prasch, Registered Land Surveyor
Minnesota Registration No. 6743

State of Minnesota
County of Hennepin The foregoing instrument was acknowledged before me this 5TH day of APRIL 1985, by Raymond A. Prasch, a registered land surveyor.



Milton E. Hyland
Milton E. Hyland, Notary Public, Hennepin County, Minnesota
My Commission Expires November 19, 1987

HAROLD M. PIERCE a registered professional ARCHITECT for the State of Minnesota pursuant to Minnesota Statutes Section 515A.2-101 (b) and (c) does hereby certify that all structural components and mechanical systems serving more than one unit of all buildings containing or comprising any units hereby created are substantially completed consistent with the Fifth Supplemental Floor Plans for Condominium No. 32, Forest Oaks Carriage Homes II, a Condominium, and that all the units are entirely completed consistent with said Floor Plans. Dated this 8TH day of APRIL 1985.

Harold M. Pierce
Minnesota Registration No. 10862

State of Minnesota
County of HENNEPIN The foregoing instrument was acknowledged before me this 8th day of April 1985, by HAROLD M. PIERCE a registered professional ARCHITECT.



Milton E. Hyland
Notary Public, HENN. County, Minnesota
My Commission Expires Nov. 19, 1987

Checked and approved this 8th day of April 1985.

"NO DELINQUENT TAXES AND TRANSFER ENTERED"

April 8 1985

Charles R. DeLeon
Auditor, Anoka County

By *Jonell M. Sawyer*
Deputy

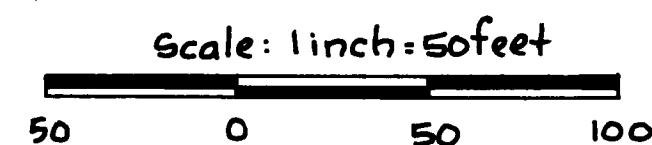
I HEREBY CERTIFY THAT THE TAXES PAYABLE IN THE YEAR 1985 ON THE LANDS DESCRIBED WITHIN ARE PAID
Donald C. Bailey
Anoka County Treasurer

Roland W. Andrus
Anoka County Surveyor

OFFICE OF COUNTY RECORDER
STATE OF MINNESOTA, COUNTY OF ANOKA
I hereby certify that the within instrument was filed in this office for record on the APR 9 1985 A.D., 1985 at 9 o'clock A.M., and was duly recorded in book 2 of page 14
W. J. Oundahl
County Recorder
By *W. J. Oundahl*

SW corner of the SE 1/4 of the NE 1/4 Sec 15, T31, R24.

South line of the SE 1/4 of the NE 1/4 Sec 15

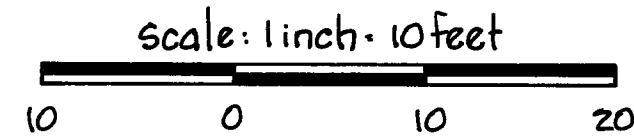


For the purposes of this plat the East line of FOREST OAKS CONDOMINIUM is assumed to bear N0°46'03"W

Benchmark: Top of Manhole 20 feet north of northwest corner Lot 2 Block 1 FOREST OAKS CARRIAGE HOMES Elev. = 866.33 (NGVD 1929)

o Denotes Iron Monument

CONDOMINIUM NUMBER 32 FOREST OAKS CARRIAGE HOMES II A CONDOMINIUM



BUILDING NO. 7

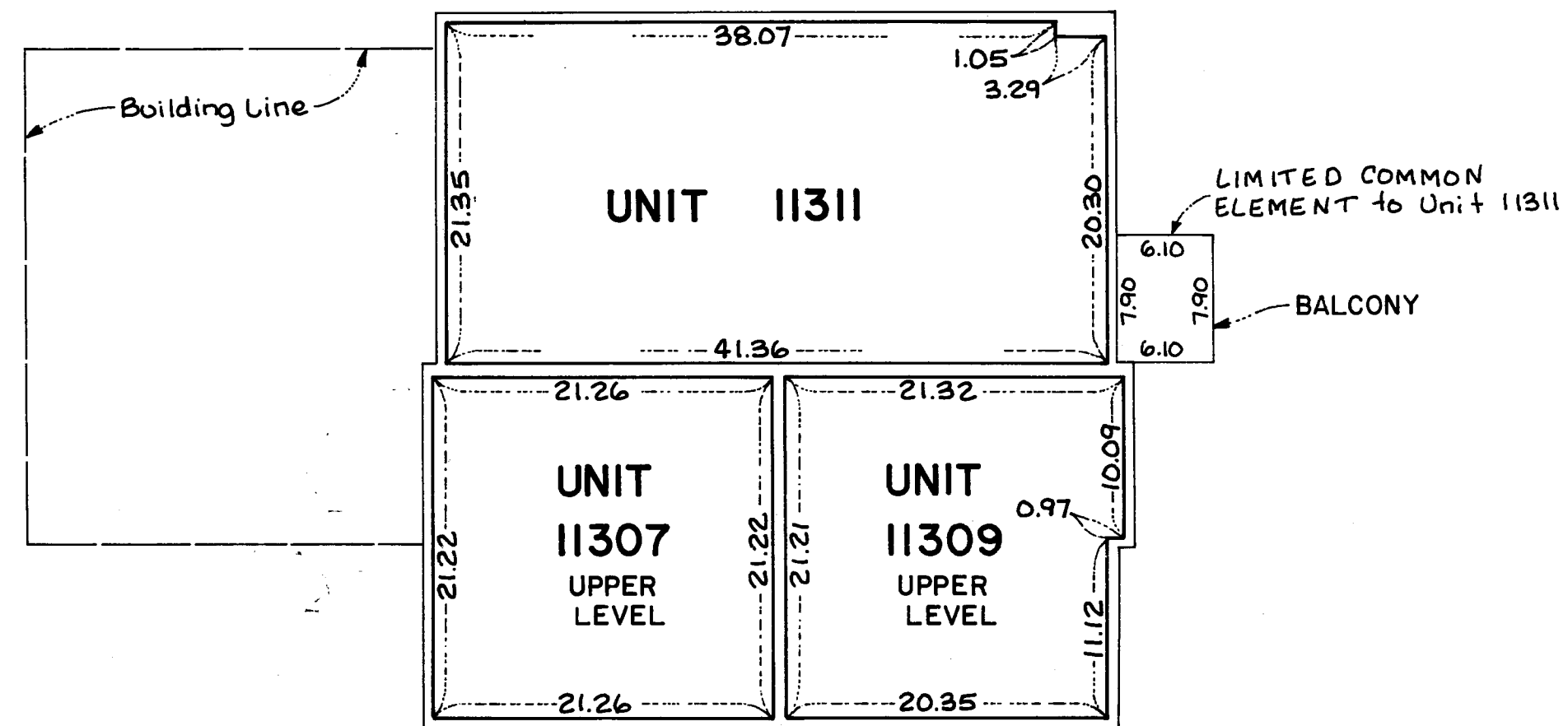
LOT SURVEYS COMPANY, INC.
LAND SURVEYORS

FIFTH SUPPLEMENTAL FLOOR PLANS

SECOND FLOOR LEVEL

SECOND FLOOR ELEVATIONS:

Ceiling Elevation - 882.86 Feet
Floor Elevation - 874.74 Feet



Measurements shown are from stud wall to stud wall.

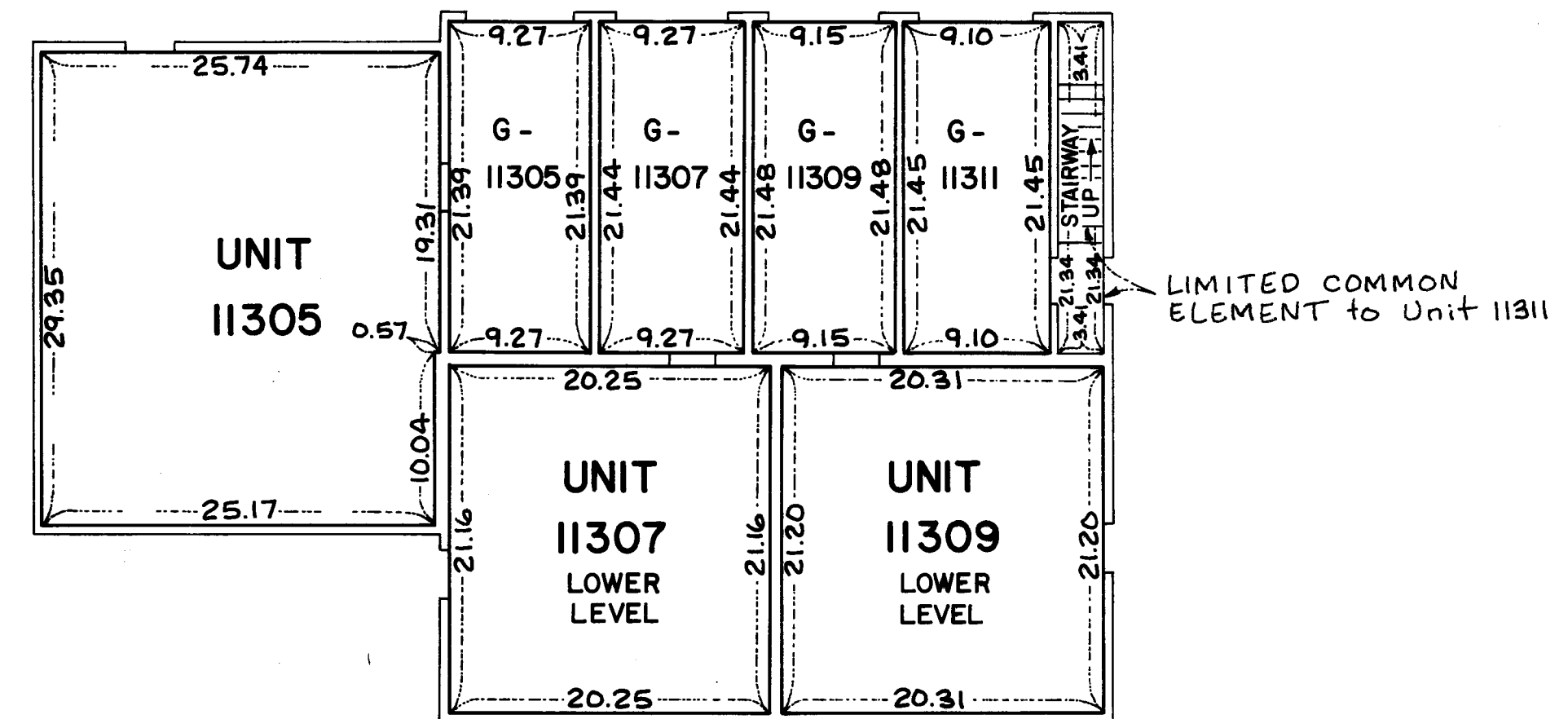
FIRST FLOOR LEVEL

FIRST FLOOR ELEVATIONS:

Ceiling Elevation - 873.52 Feet
Floor Elevation - 865.40 Feet

GARAGE FLOOR ELEVATIONS:

Units G-11305, G-11307, G-11309, G-11311
Ceiling Elevation - 873.44 Feet
Floor Elevation - 865.03 Feet



Elevations shown are referenced to a Benchmark shown on the Site Plan.

