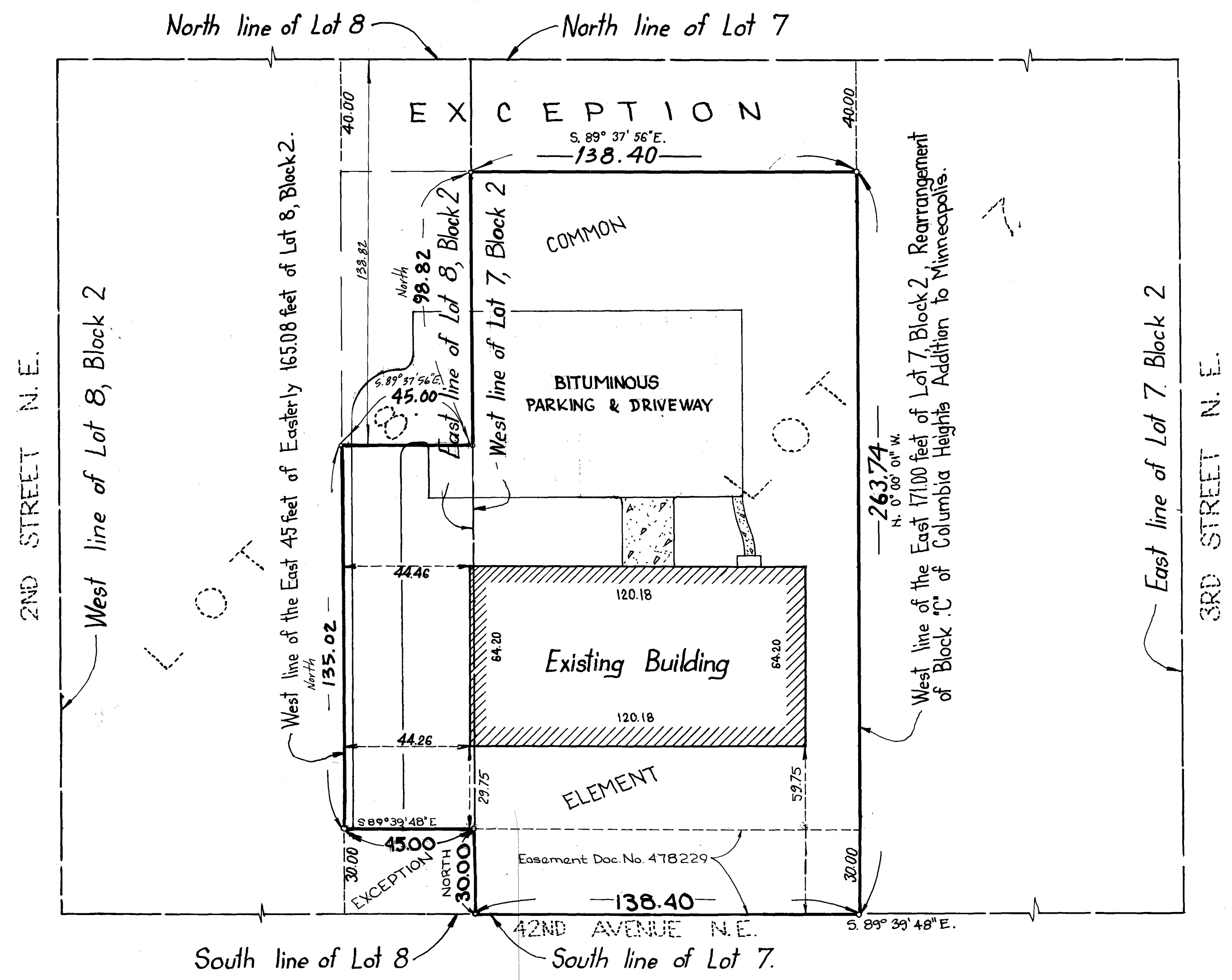
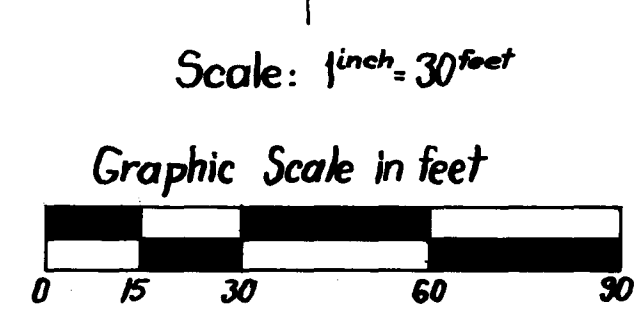


CONDOMINIUM NUMBER 33 GAUVETTE PARK CONDOMINIUM

These Floor Plans are part of the Declaration
filed as Document No. 152215
on the 10th day of June, 1986 A.D., 19



o Denotes iron monument.
For purposes of this Plat, the South line of Lot 7, Block 2 Rearrangement of Block C of Columbia Heights Annex to Minneapolis has an assumed bearing of S. 89° 39' 48" E.
Bench mark
Top of Hydrant at the Northeast corner of 42nd Avenue NE. and 2nd Street NE.
Elevation: 191.81 ; Columbia Heights City datum.



URBAN ENGINEERING INC.
ENGINEERS SURVEYORS PLANNERS
MAIN OFFICE: 571-6066
6875 HIGHWAY NO. 65 N.E.
MINNEAPOLIS MINNESOTA 55432

"NO DELINQUENT TAXES AND TRANSFER ENTERED"
July 1, 1986
Charles R. Hoffmann
Auditor, Anoka County
BY S. Culver
Deputy

The undersigned being duly sworn under oath, certifies and deposes that these floor plans of Condominium Number 33, GAUVETTE PARK CONDOMINIUM, being located upon:
That part of Lot 7, Block 2, "Rearrangement of Block C of Columbia Heights Annex to Minneapolis, "lying West of the East 171 feet of said lot and south of the North 40 feet of said lot, and
The East 45 feet of that part of the Easterly 165.08 feet of Lot Eight (8), Block Two (2), "Rearrangement of Block C of Columbia Heights Annex to Minneapolis" lying South of the Northerly 138.82 feet except the Southerly 30 feet thereof for street purposes

fully and accurately depict all information required by Minnesota Statutes Section 515A.2-110. Dated this 10th day of June, 1986.
Howard W. Rogers, Registered Land Surveyor
Minnesota Reg. No. 16945

STATE OF MINNESOTA)
COUNTY OF ANOKA)
The foregoing instrument was acknowledged before me this 10th day of June, 1986 by Howard W. Rogers, a Registered Land Surveyor.
Linda R. Vogel
Notary Public, Anoka County, Minn.
My Commission Expires 6/6/91

ELDON D. MORRISON a Registered Professional Architect for the State of Minnesota, pursuant to Minnesota Statutes Section 515A.2-101 (c) does hereby certify that all units are entirely completed consistent with the floor plans for Condominium Number 33, GAUVETTE PARK CONDOMINIUM. Dated this 10th day of June, 1986.
S. Culver
Registered Architect
Minnesota Reg. No. 7913

STATE OF MINNESOTA
COUNTY OF ANOKA
The foregoing instrument was acknowledged before me this 10th day of June, 1986, by ELDON D. MORRISON, a Registered Professional Architect.
Elizabeth A. Klatt
Notary Public, Anoka County, Mn.
My Commission Expires 12-14-89

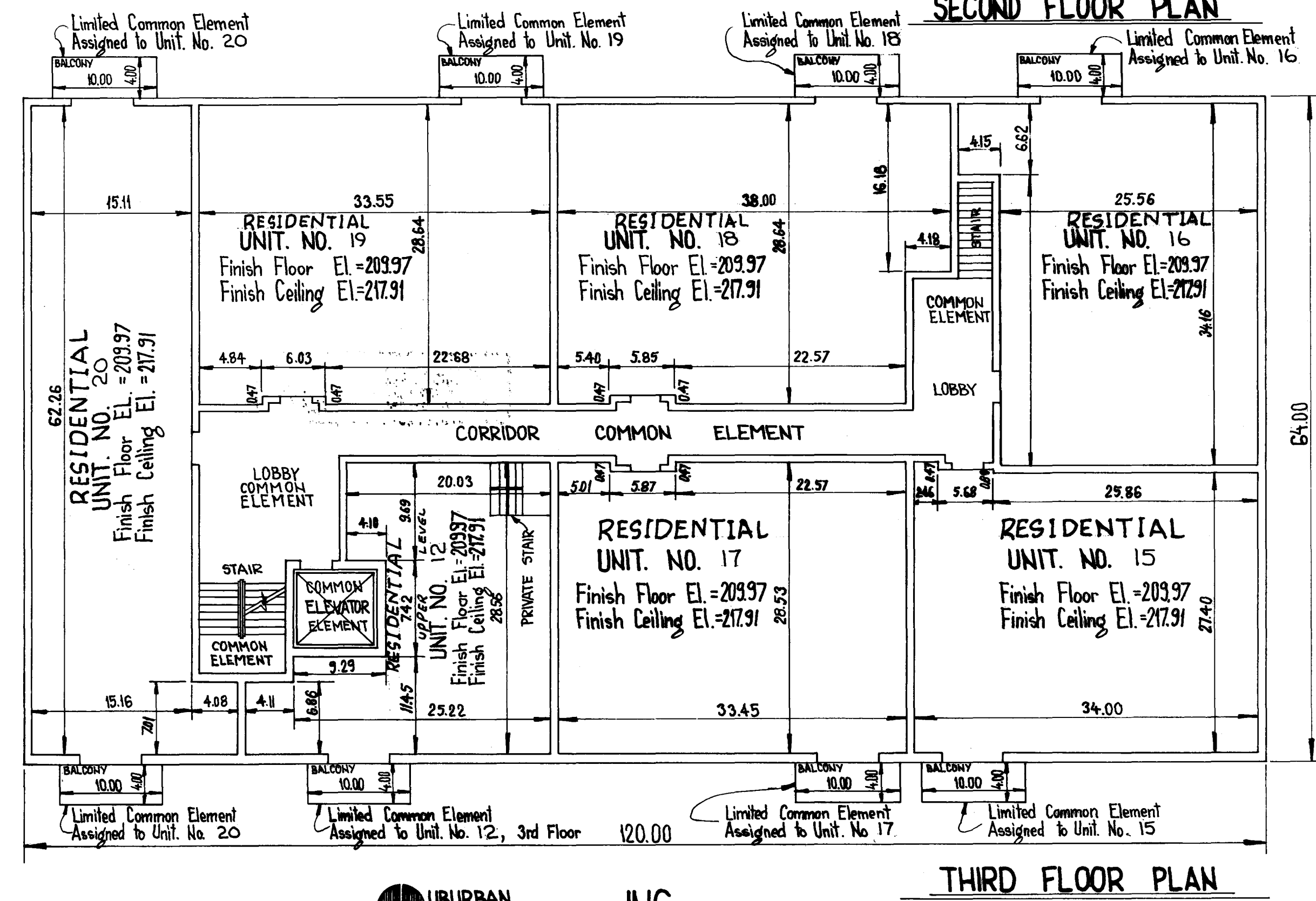
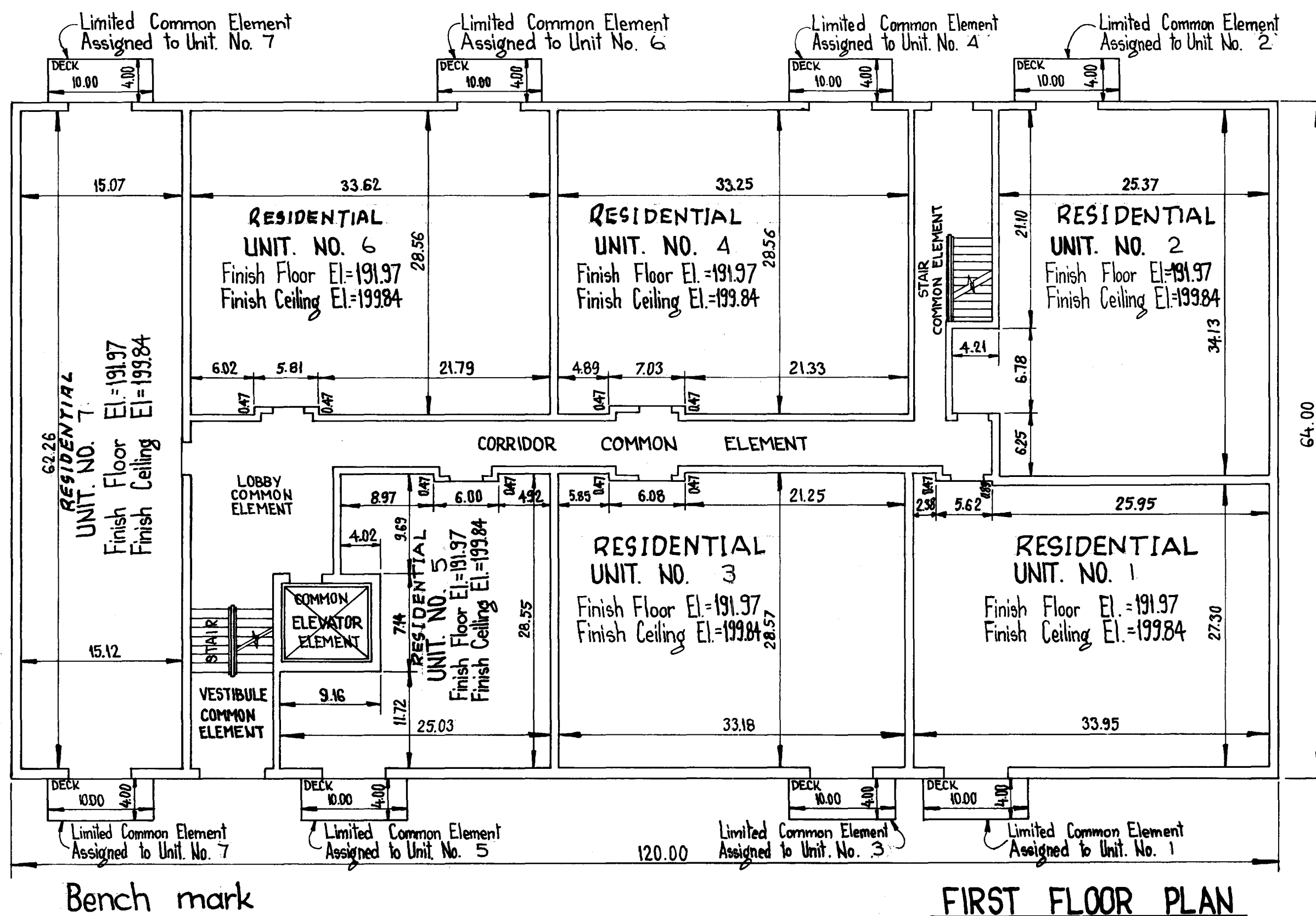
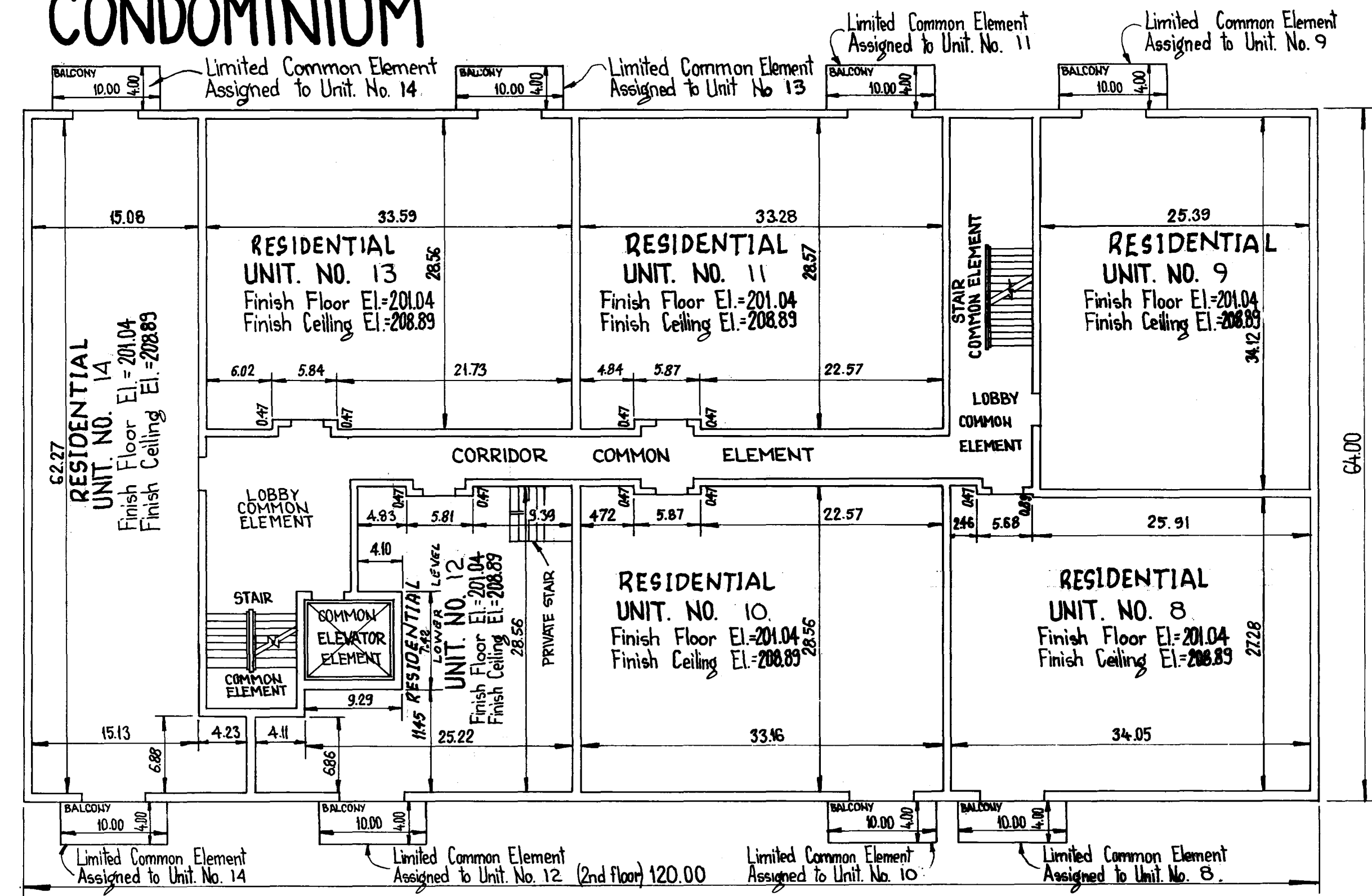
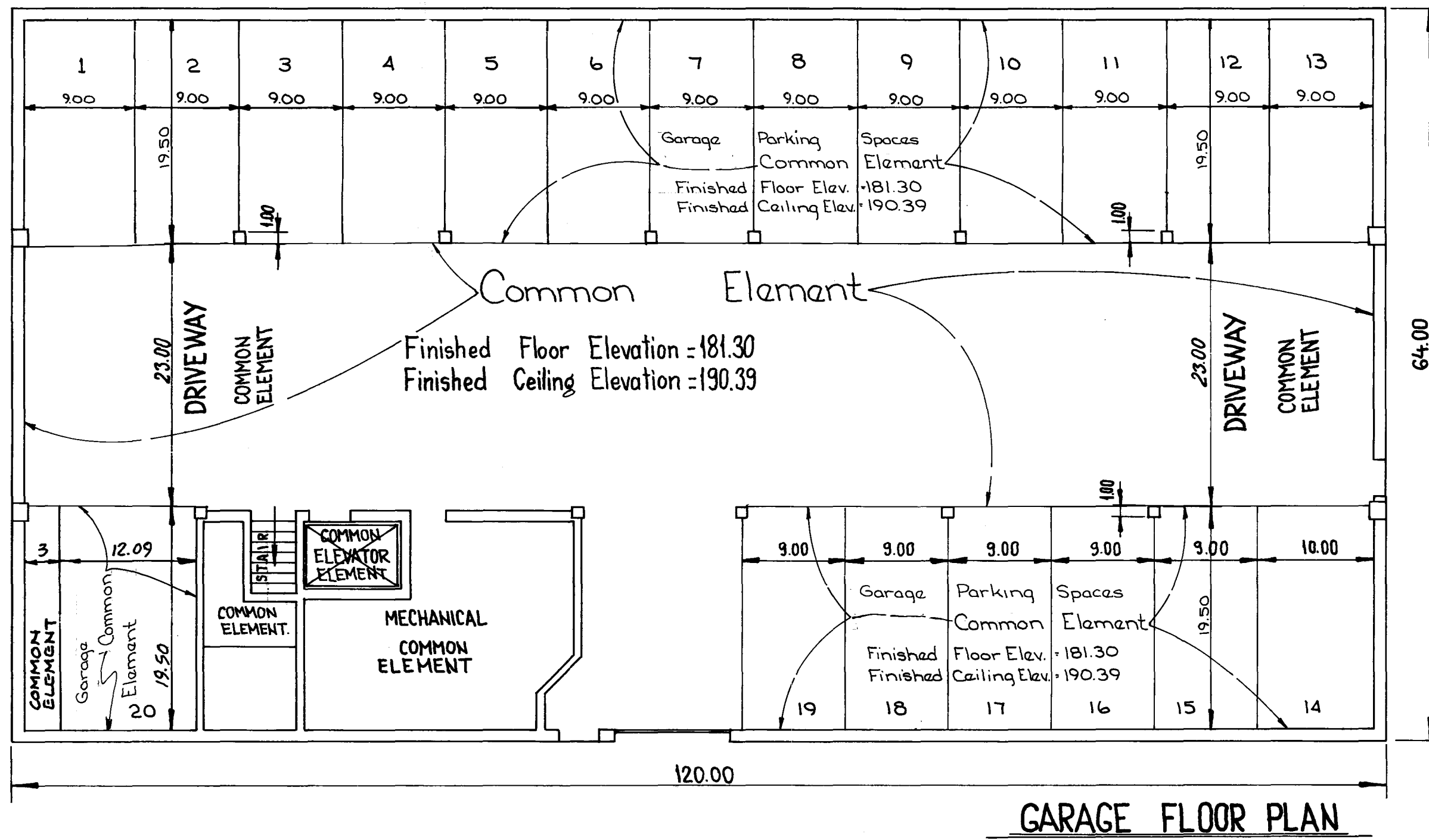
ELDON D. MORRISON, a Registered Professional Architect for the State of Minnesota, pursuant to Minnesota Statutes Section 515A.2-101 (b) does hereby certify that all structural components and mechanical systems serving more than one unit of the building containing or comprising any units hereby created are substantially completed consistent with the floor plans for Condominium No 33 GAUVETTE PARK CONDOMINIUM. Dated this 10th day of June, 1986.
S. Culver
Registered Architect
Minnesota Reg. No. 7913

STATE OF MINNESOTA
COUNTY OF ANOKA
The foregoing instrument was acknowledged before me this 10th day of June, 1986, by ELDON D. MORRISON, a Registered Professional Architect.
Elizabeth A. Klatt
Notary Public, Anoka County, Mn.
My Commission Expires 12-14-89

Checked and approved this 24th day of June, 1986.
Roland W. Anderson
Anoka County Surveyor

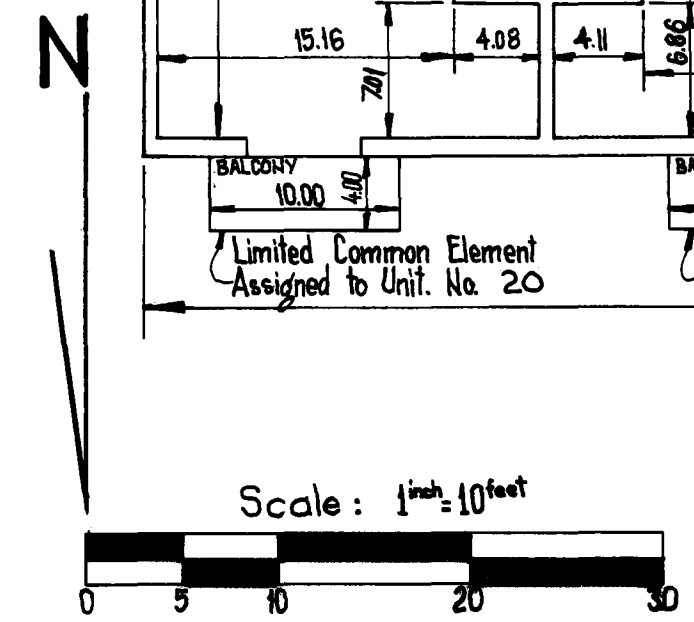
152215
Office of REGISTRAR OF TITLES
STATE OF MINNESOTA
COUNTY OF ANOKA
I hereby certify that the within instrument was filed in this office on the 10th day of JUL 1 1986 at 11:25 o'clock A.M.
Deborah J. Anderson, Registrar of Titles
By: James J. Anderson
DEPUTY REGISTRAR OF TITLES

CONDOMINIUM NUMBER 33 GAUVETTE PARK CONDOMINIUM



Bench mark
Top of hydrant at the Northeast corner
of 42nd Avenue NE. and 2nd Street NE
Elevation: 191.81, Columbia Heights City datum.

NOTE:
Measurements shown are from inside finished wall to inside finished wall.



URBAN ENGINEERING INC.
ENGINEERS SURVEYORS PLANNERS

MAIL OFFICE 571-6066
6875 HIGHWAY NO. 95 N.E.
MINNEAPOLIS, MINNESOTA 55432