

CONDOMINIUM NUMBER 35

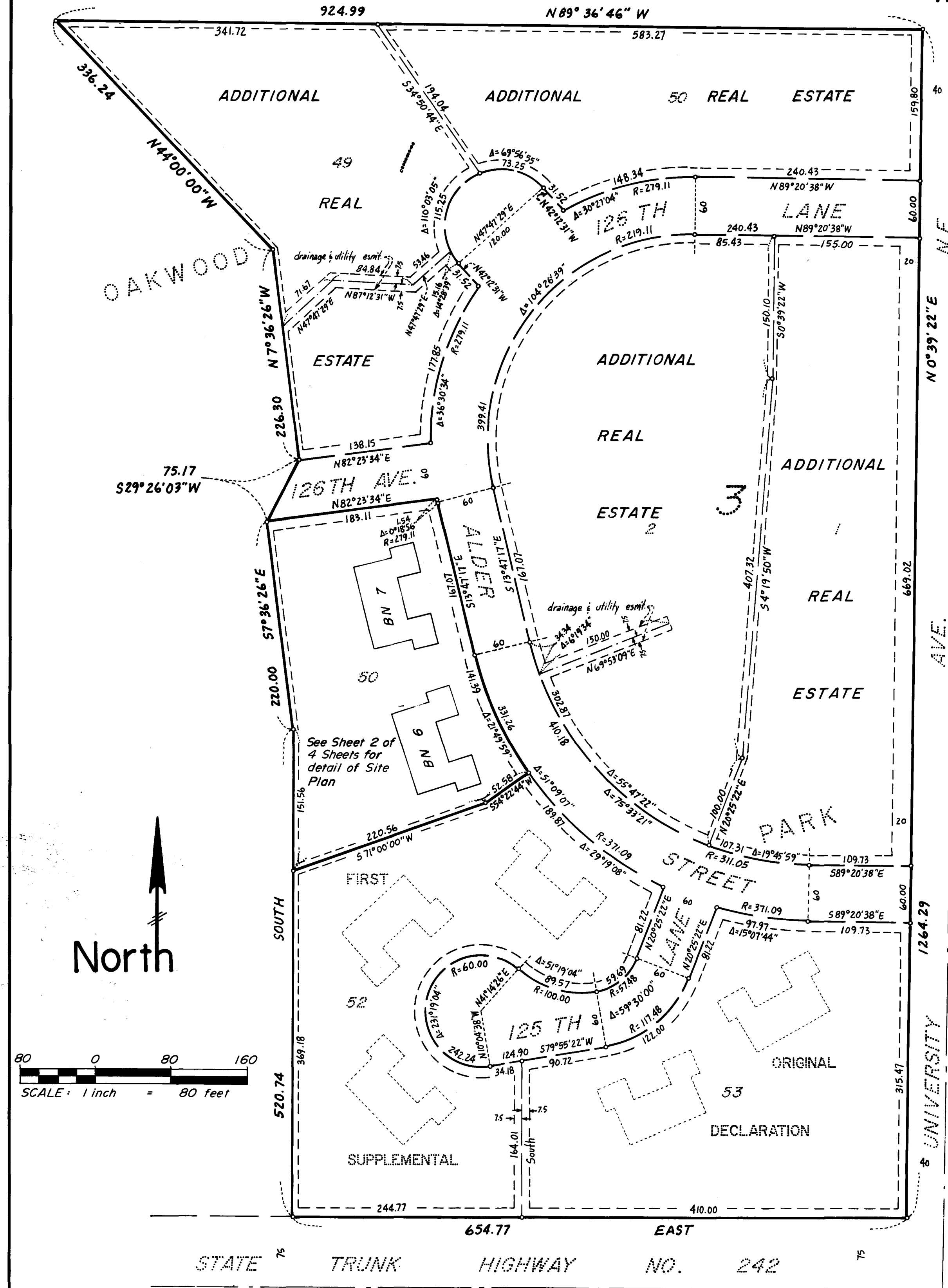
OAKWOOD PARK CONDOMINIUM

A CONDOMINIUM

SECOND SUPPLEMENTAL SITE PLAN

SECOND SUPPLEMENTAL CONDOMINIUM PLAT

THESE FLOOR PLANS HAVE BEEN RECORDED AS PART OF THE DECLARATION FILED AS DOCUMENT NO. 783942 ON THE 20th DAY OF October 1987, ANOKA COUNTY RECORDER



The undersigned, being first duly sworn under oath, certifies and deposes that this SECOND SUPPLEMENTAL CONDOMINIUM PLAT of CONDOMINIUM NUMBER 35, OAKWOOD PARK CONDOMINIUM, being located upon:

Lot 50, Block 2, OAKWOOD PARK, according to the plat on file and of record in the office of the County Recorder, Anoka County, Minnesota.

fully and accurately depicts all information required by Minnesota Statutes Section 515A. 2-110. Dated this 6th day of October 1987.

Richard H. Cherrier
Richard H. Cherrier, Registered Land Surveyor
Minnesota Registration Number 9064

State of Minnesota,
County of Hennepin

The foregoing instrument was acknowledged before me this 6th day of October 1987 by Richard H. Cherrier, a registered professional land surveyor.

WILLIAM J. CHERRIER
NOTARY PUBLIC - MINNESOTA
HENNEPIN COUNTY
My Commission Expires Dec. 8, 1992

William J. Cherrier
Notary Public, Hennepin County, Minnesota
My commission expires December 8, 1992

HAROLD M. PIERCE, a registered professional ARCHITECT for the State of Minnesota pursuant to Minnesota Statutes Section 515A. 2-101 (b) and (c) does hereby certify that all structural components and mechanical systems serving more than one unit of all buildings containing or comprising any units hereby created are substantially completed consistent with the SECOND SUPPLEMENTAL CONDOMINIUM PLAT, CONDOMINIUM NUMBER 35, OAKWOOD PARK CONDOMINIUM, and that all the units are entirely completed consistent with said CONDOMINIUM PLAT

Dated this 20th day of OCTOBER 1987.

Harold M. Pierce
HAROLD M. PIERCE Registered ARCHITECT
Minnesota Registration Number 10862

State of Minnesota,
County of Hennepin

The foregoing instrument was acknowledged before me this 20th day of October 1987 by Harold M. Pierce, a registered professional Architect.

FERN M. SINGLETON
NOTARY PUBLIC - MINNESOTA
ANOKA COUNTY
My Commission Expires 5-14-93

Fern M. Singleton
Notary Public, Anoka County Minnesota
My commission expires 5-14-93

Checked and approved this 20th day of Oct 1987.

Murf D. Anker
Anoka County Surveyor

This is a flexible condominium per Minnesota Statute 515A. Additional real estate consists of: Lots 49 and 50, Block 1; and Lots 1 and 2, Block 3; all in OAKWOOD PARK, according to the plat on file and of record in the office of the County Recorder, Anoka County, Minnesota.

"NO DELINQUENT TAXES AND TRANSFER ENTLRED"

October 21, 1987
Charles R. Schifano
Auditor, Anoka County
By Donell M. Sawyer
Deputy

LEGEND

- o Denotes iron monument
- BN Denotes Building Number
- All units of measure are shown in feet and hundredths of a foot.
- Benchmark: Top of Minnesota Highway Dept. brass cap monument No. 0212M at the northeast quad, S.T.H. No. 242 and University Ave. N.E. Elevation = 900.22 feet (N.G.V.D. 1929)
- For the purposes of this plat, the east line of the SE 1/4, SE 1/4, Sec. 1, T.31, R. 24 bears N0°39'22"E

CHERRIER - WINTER & ASSOCIATES, INC.

REGISTERED PROFESSIONAL LAND SURVEYORS

783942
OFFICE OF COUNTY RECORDER
STATE OF MINNESOTA, COUNTY OF ANOKA
I hereby certify that the within instrument was filed in this office for record on the Oct 20 A.D., 1987 at 4:30 o'clock P.M., and was duly recorded in book 3 of Condos page 23
Ted J. Omdahl
County Recorder
By Doree Kay Ege
Deputy

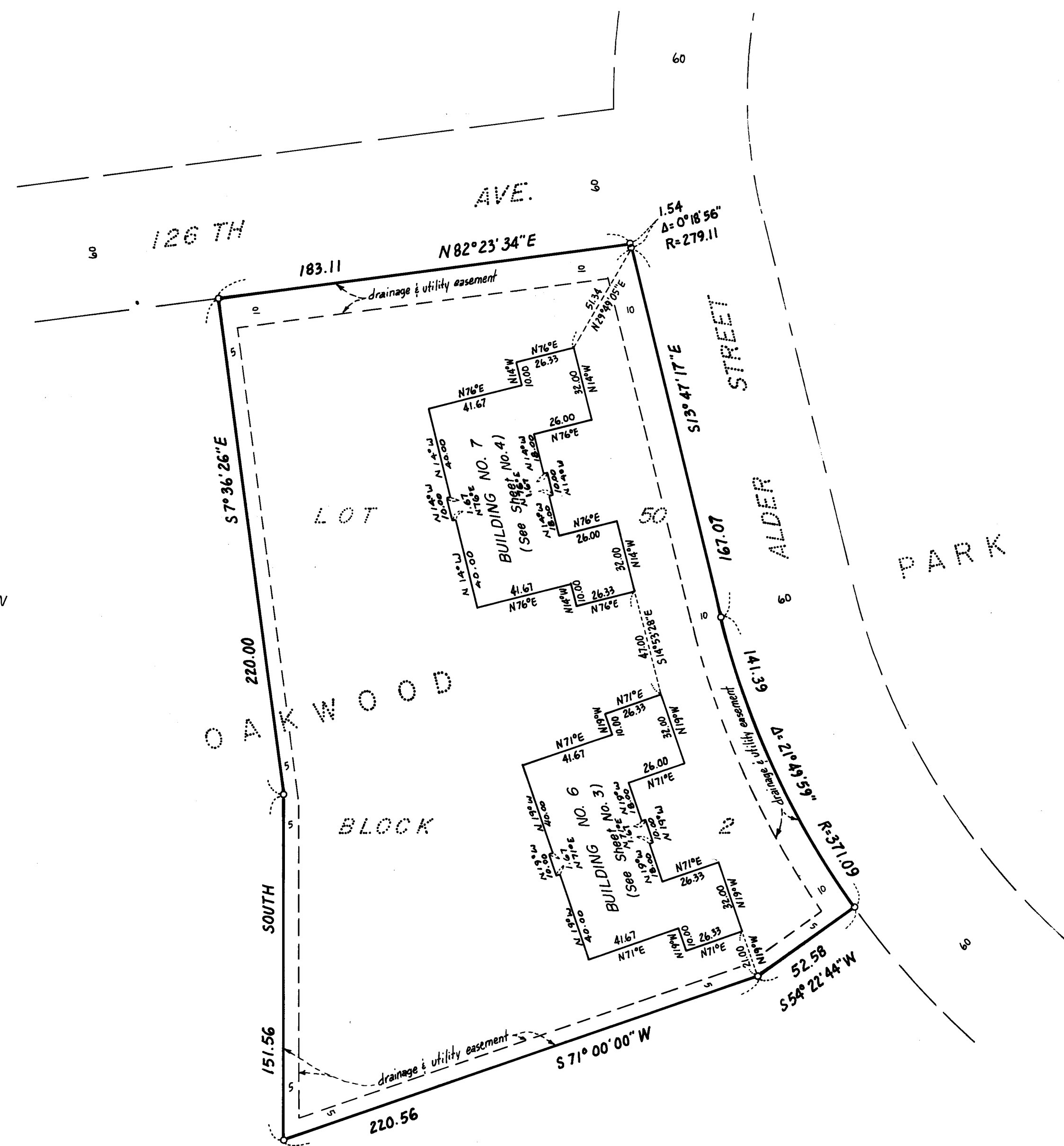
CONDOMINIUM NUMBER 35

OAKWOOD PARK CONDOMINIUM

A CONDOMINIUM

SECOND SUPPLEMENTAL CONDOMINIUM PLAT

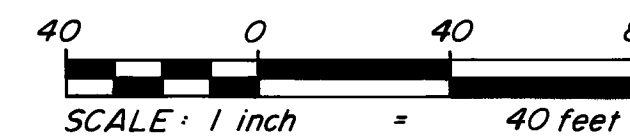
SECOND SUPPLEMENTAL SITE PLAN DETAIL



LEGEND

○ DENOTES IRON MONUMENT

ALL UNITS OF MEASURE ARE SHOWN IN FEET AND HUNDREDTHS OF A FOOT.



CHERRIER - WINTER & ASSOCIATES, INC.

REGISTERED PROFESSIONAL LAND SURVEYORS

CONDOMINIUM NUMBER 35

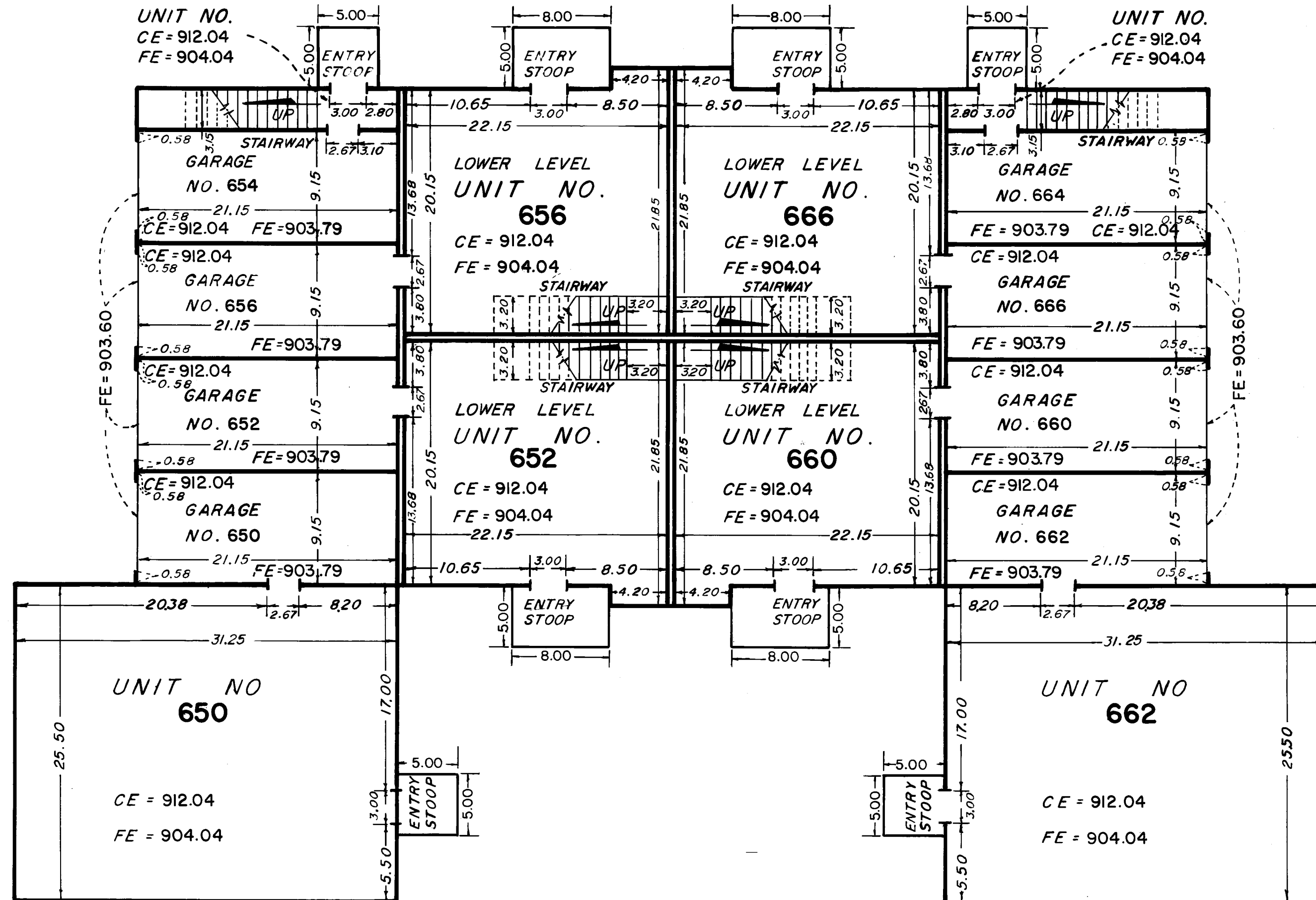
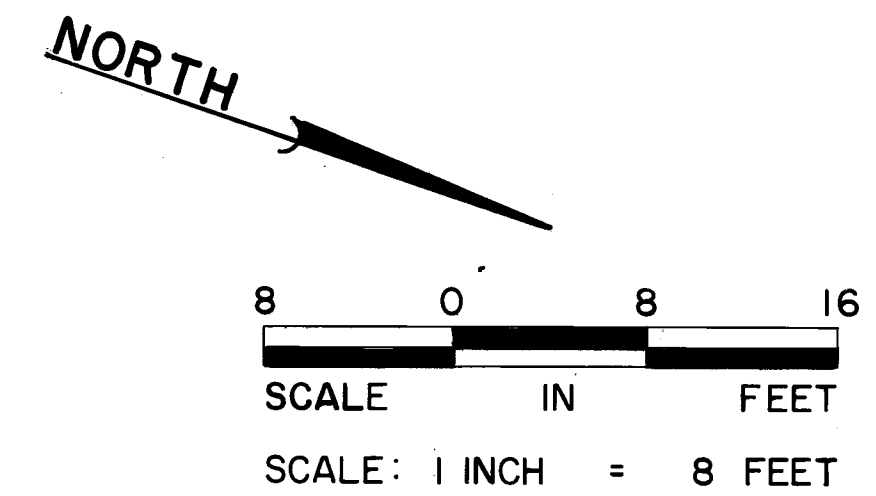
OAKWOOD PARK CONDOMINIUM
A CONDOMINIUM

SECOND SUPPLEMENTAL CONDOMINIUM PLAT

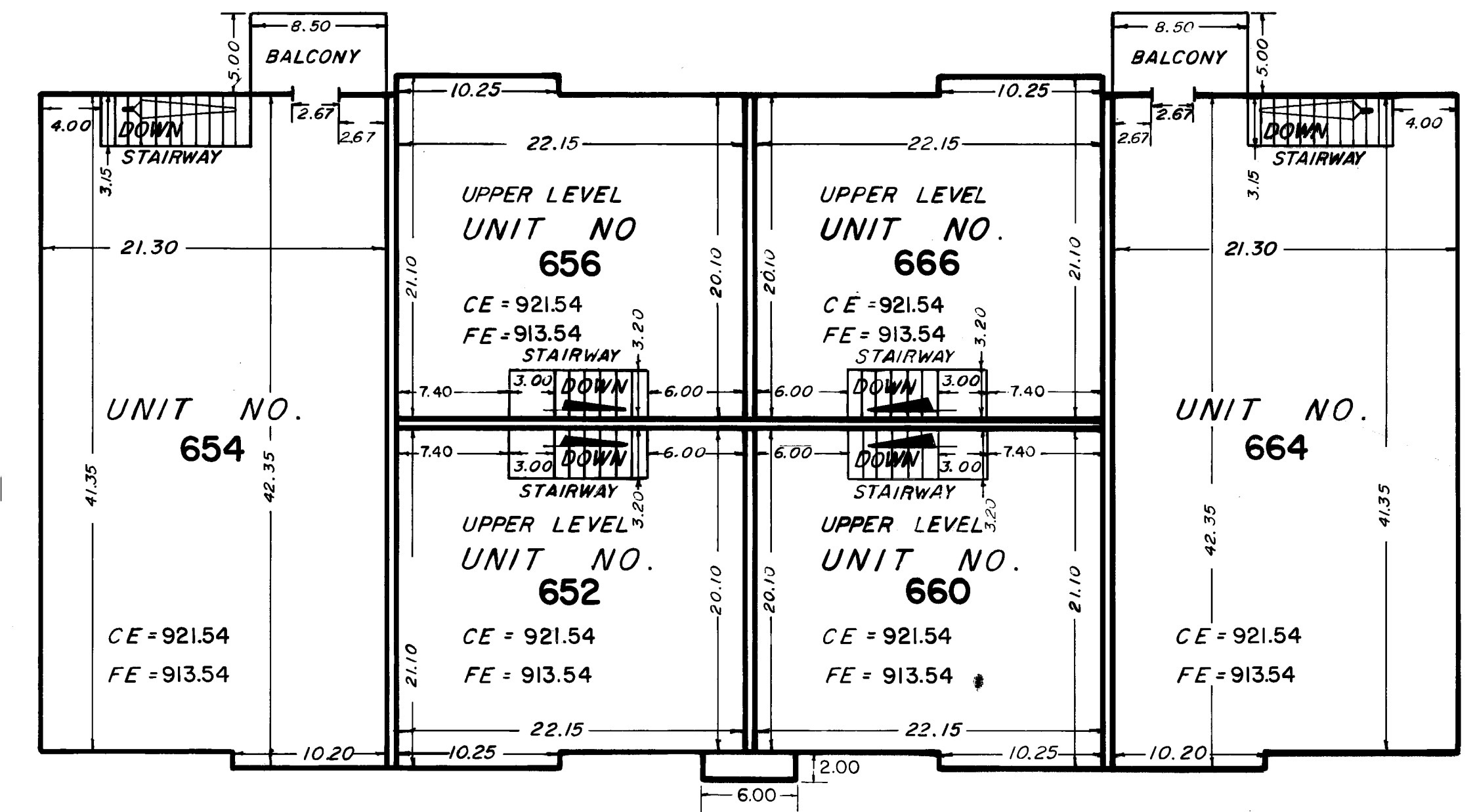
BUILDING NUMBER 6

LEGEND

CE = Ceiling Elevation
 FE = Floor Elevation
 Elevations shown are referenced to a bench mark as noted on sheet
 All units of measure are shown in feet and hundredths of a foot
 All attached garages are Limited Common Elements
 All entry stoops and balconies are Limited Common Elements assigned to the unit they are adjacent to unless otherwise noted.
 All measurements are from inside stud wall to inside stud wall.



LOWER LEVEL



UPPER LEVEL

CHERRIER-WINTER & ASSOCIATES, INC.

REGISTERED PROFESSIONAL LAND SURVEYORS

CONDOMINIUM - NUMBER 35

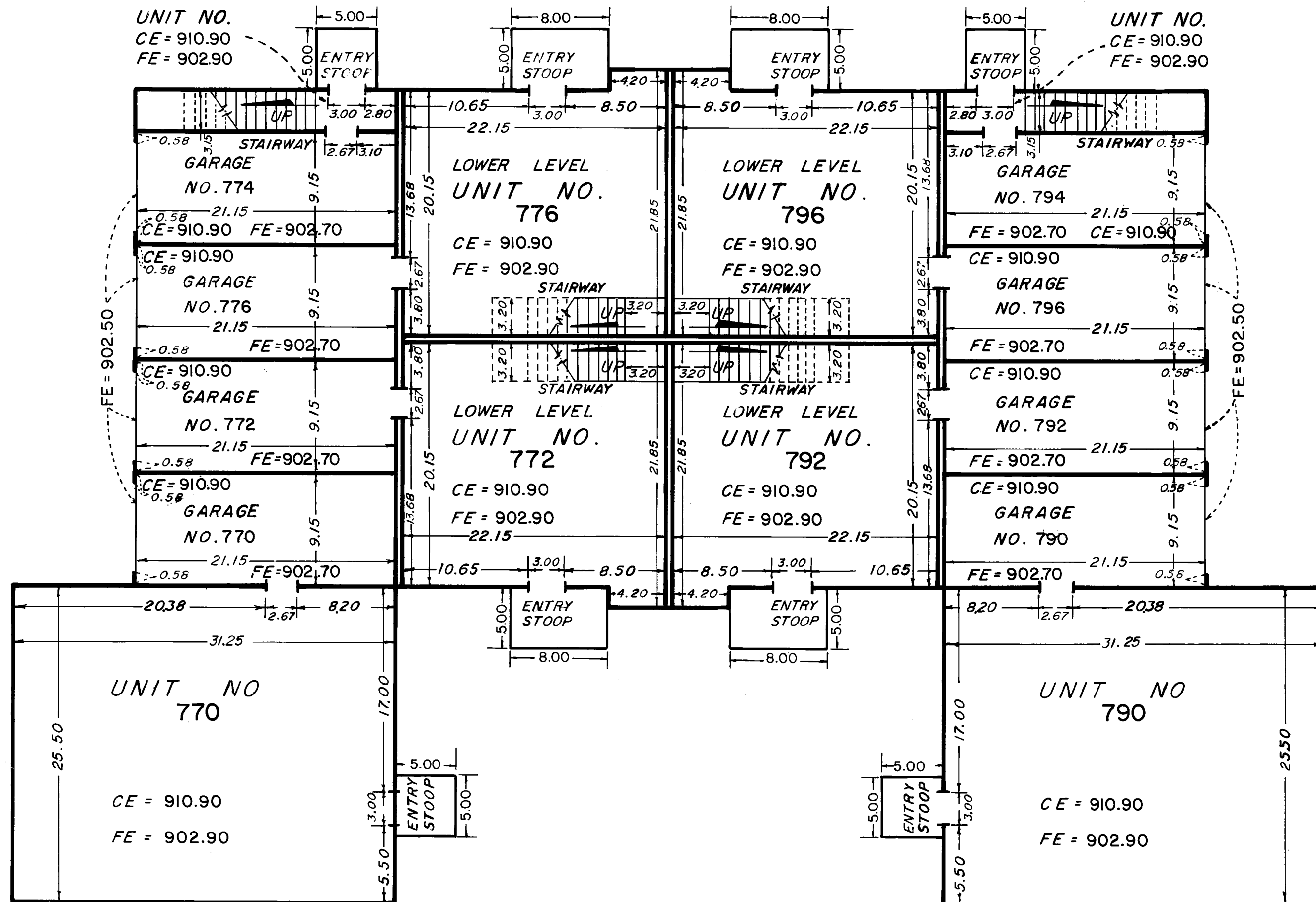
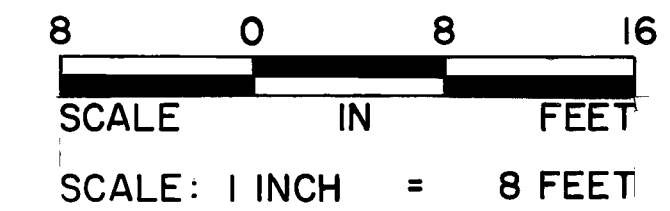
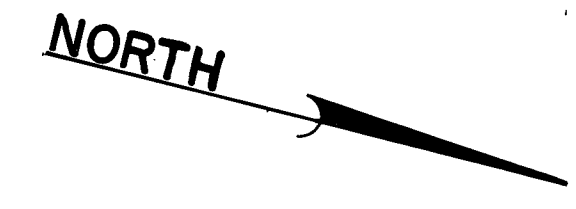
OAKWOOD PARK CONDOMINIUM
A CONDOMINIUM

SECOND SUPPLEMENTAL CONDOMINIUM PLAT

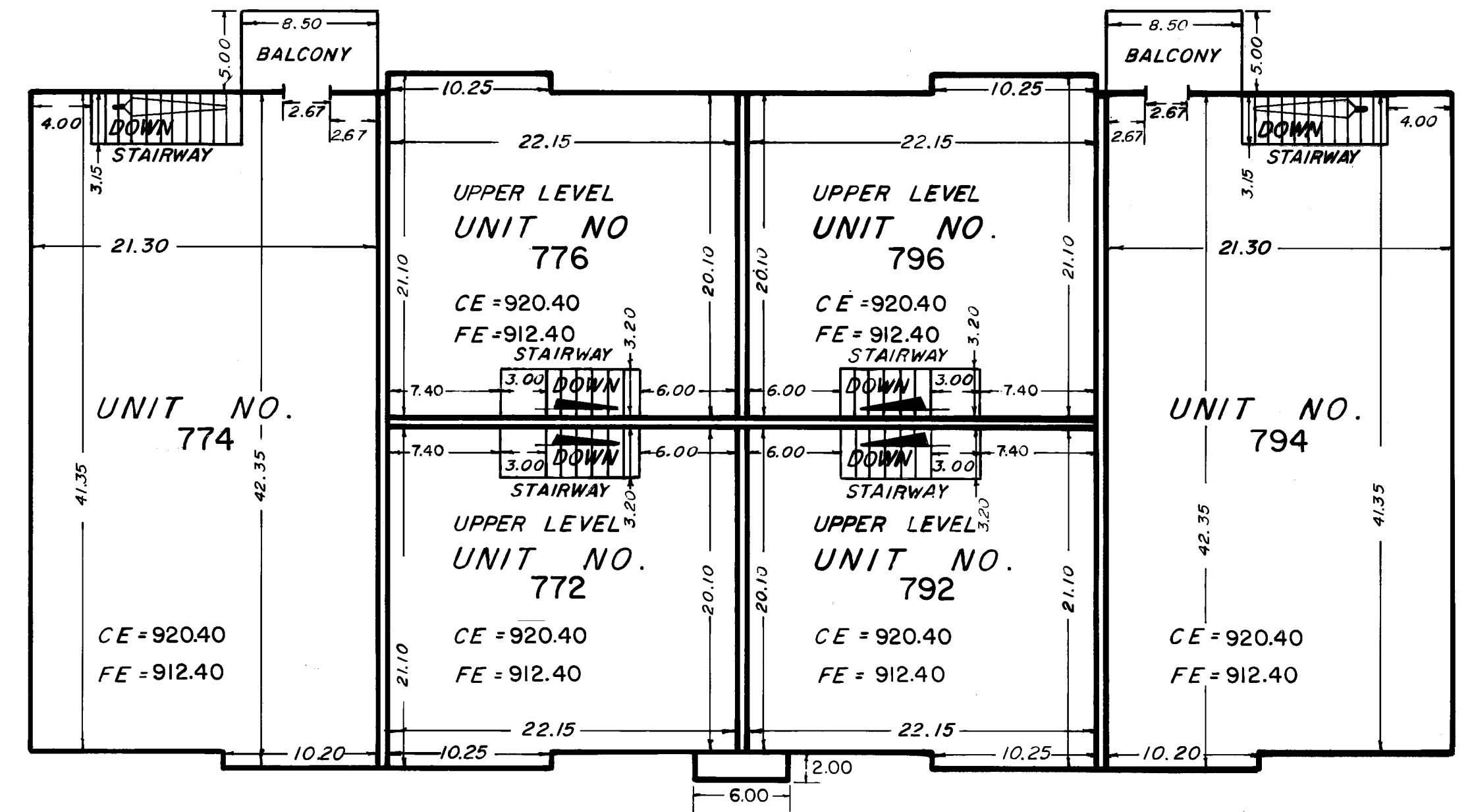
BUILDING NUMBER 7

LEGEND

CE = Ceiling Elevation
 FE = Floor Elevation
 Elevations shown are referenced to a bench mark as noted on sheet
 All units of measure are shown in feet and hundredths of a foot
 All attached garages are Limited Common Elements
 All entry stoops and balconies are Limited Common Elements assigned to the unit they are adjacent to unless otherwise noted.
 All measurements are from inside stud wall to inside stud wall.



LOWER LEVEL



UPPER LEVEL

CHERRIER-WINTER & ASSOCIATES, INC.

REGISTERED PROFESSIONAL LAND SURVEYORS