

These Third Supplemental Floor Plans are part of the Declaration filed or recorded as Document No. 722518 on this 22nd day of August 1986.

# CONDOMINIUM NUMBER 36 UNIVERSITY HEIGHTS ONE CONDOMINIUM

## THIRD SUPPLEMENTAL FLOOR PLANS

LOT SURVEYS COMPANY, INC.  
LAND SURVEYORS

The undersigned, being first duly sworn under oath, certifies and deposes that these Third Supplemental Floor Plans of CONDOMINIUM NUMBER 36, UNIVERSITY HEIGHTS, ONE CONDOMINIUM, being located upon

Lots 2 and 2A, Block 1, UNIVERSITY HEIGHTS ADDITION, according to the plat thereof on file and of record in the office of the County Recorder in and for Anoka County, Minnesota.

This is a flexible condominium Per Minnesota Statutes Section 515A the additional real estate described as follows:

Lots 1 and 1A, Block 1, and Lots 1, 1A, 2, 2A, 3, 4 and 5, Block 2, UNIVERSITY HEIGHTS ADDITION, according to the plat thereof on file and of record in the office of the County Recorder in and for Anoka County, Minnesota.

fully and accurately depicts all information required by Minnesota Statutes Section 515A. 2-110. Dated this 12<sup>TH</sup> day of AUGUST, 1986.

Raymond A. Prasch

Raymond A. Prasch, Registered Land Surveyor  
Minnesota Registration No. 6743

State of Minnesota

County of Hennepin The foregoing instrument was acknowledged before me this 12<sup>TH</sup> day of AUGUST, 1986, by Raymond A. Prasch, a registered professional land surveyor.



Milton E. Hyland

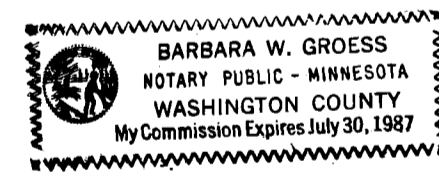
Milton E. Hyland, Notary Public, Hennepin County, Minn.  
My Commission Expires November 19, 1987

Donald J. Baker, a registered professional Architect for the State of Minnesota pursuant to Minnesota Statutes Section 515A. 2-101 (b) and (c) does hereby certify that all structural components and mechanical systems serving more than one unit of all buildings containing or comprising any units hereby created are substantially completed consistent with the Third Supplemental Floor Plans for CONDOMINIUM NUMBER 36, UNIVERSITY HEIGHTS, ONE CONDOMINIUM, and that all the units are entirely completed consistent with said Floor Plans. Dated this 19 day of August, 1986.

Donald J. Baker, Registered Architect  
Minnesota Registration No. 4861

State of Minnesota

County of Anoka The foregoing instrument was acknowledged before me this 19 day of August, 1986, by Donald J. Baker a registered professional Architect.



Barbara W. Gross

Notary Public, Washington County, Minnesota  
My Commission Expires July 30, 1987

Checked and approved this 22nd day of August, 1986.

Robert W. Anderson  
Anoka County Surveyor

722518

"NO DELINQUENT TAXES  
AND TRANSFER ENTERED"

August 22 19 86

Charles P. LeFebvre  
Auditor, Anoka County

By Donell M. Sawyer  
Deputy

OFFICE OF COUNTY RECORDER  
STATE OF MINNESOTA, COUNTY OF ANOKA

I hereby certify that the within instrument was filed in this office for record on the AUG 22 1986 A.D., 19

10:15 o'clock A.M., and was duly recorded in book 3 of Condo's page B

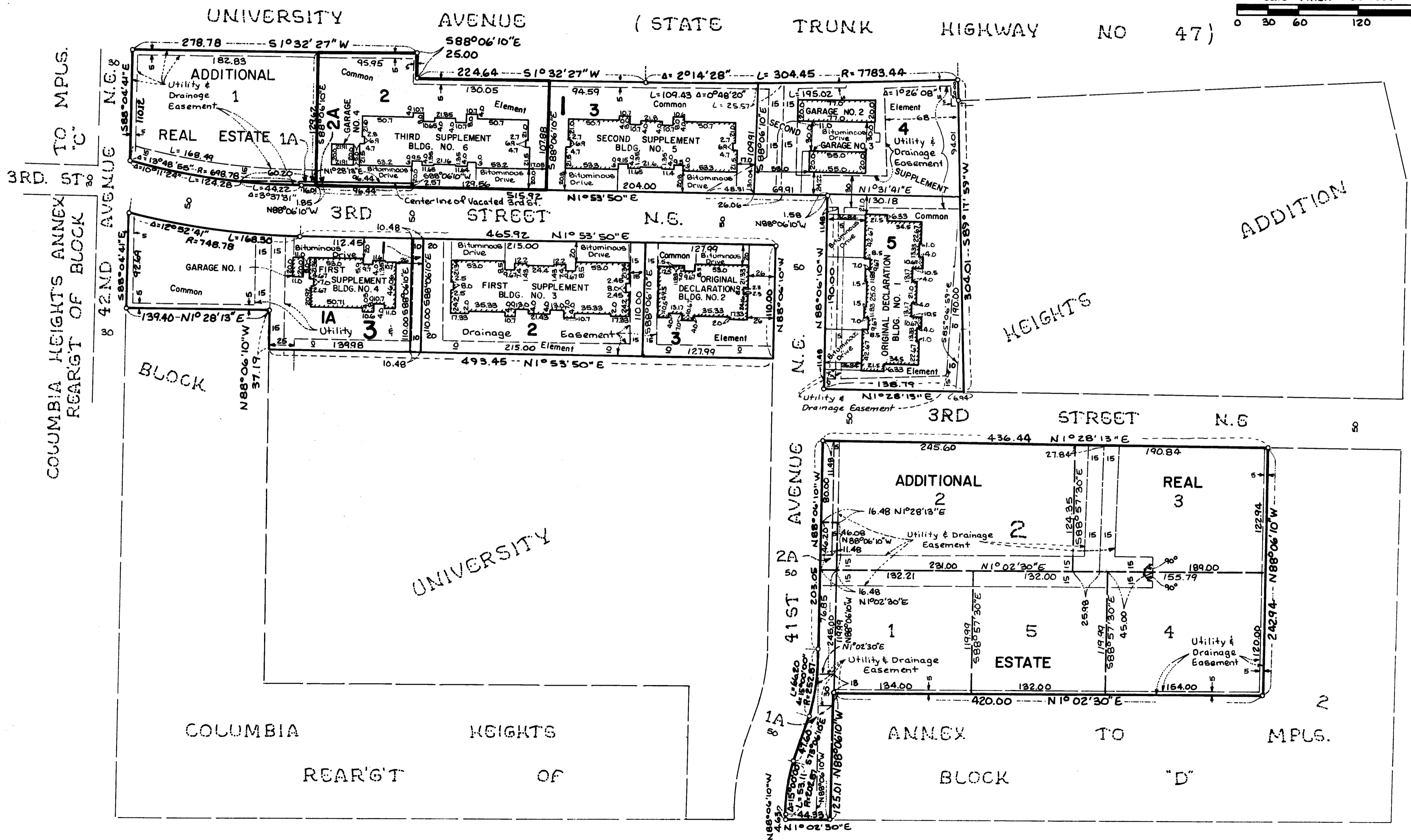
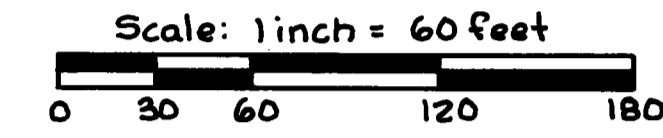
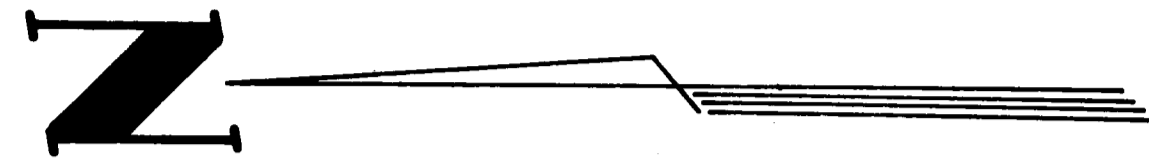
By Redmond  
County Recorder

By Debra Kay Ege  
Deputy

# CONDOMINIUM NUMBER 36 UNIVERSITY HEIGHTS ONE CONDOMINIUM

LOT SURVEYS COMPANY, INC.  
LAND SURVEYORS

THIRD SUPPLEMENTAL FLOOR PLANS  
SITE PLAN



o Denotes Iron Monument

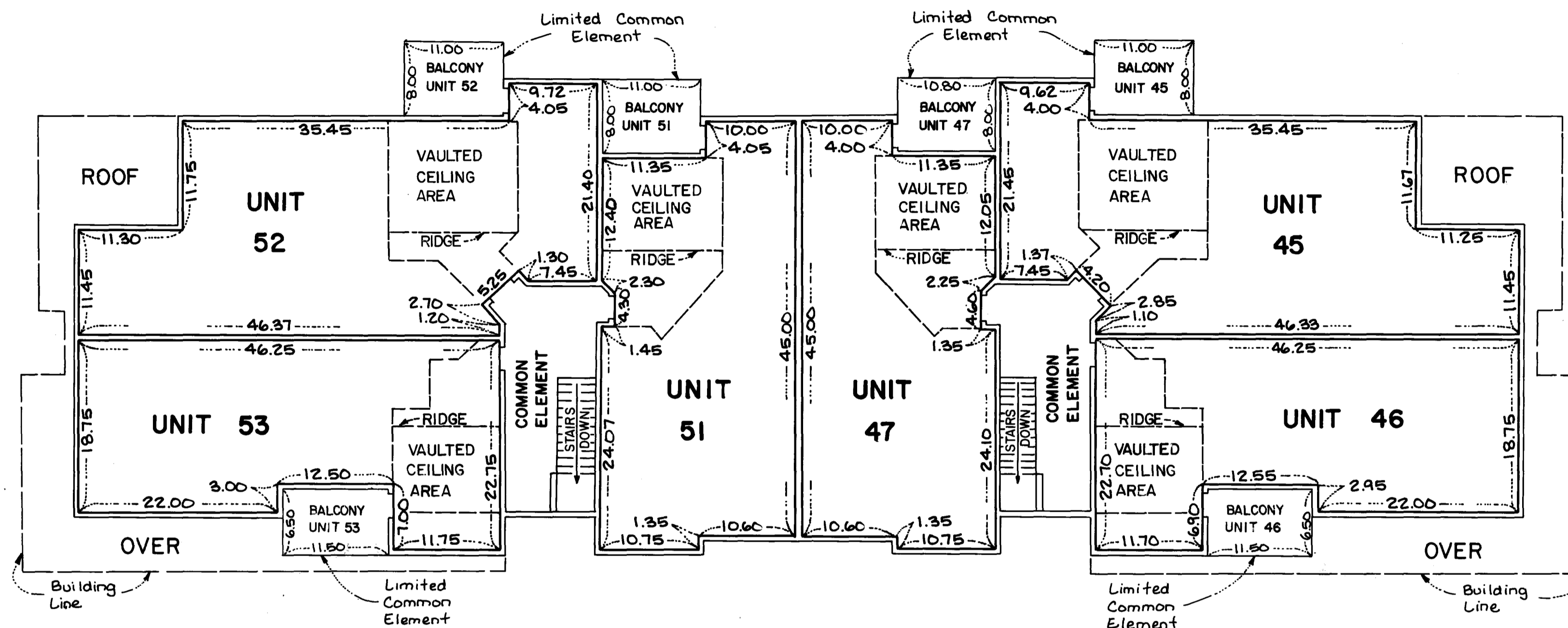
Benchmark: Top Note Hydrant S.W. corner 2nd St. N.E. and 41st Ave. N.E., Elev. = 197.73 (Columbia Heights Datum)

COLUMBIA HEIGHTS

ANNEX TO MPLS.

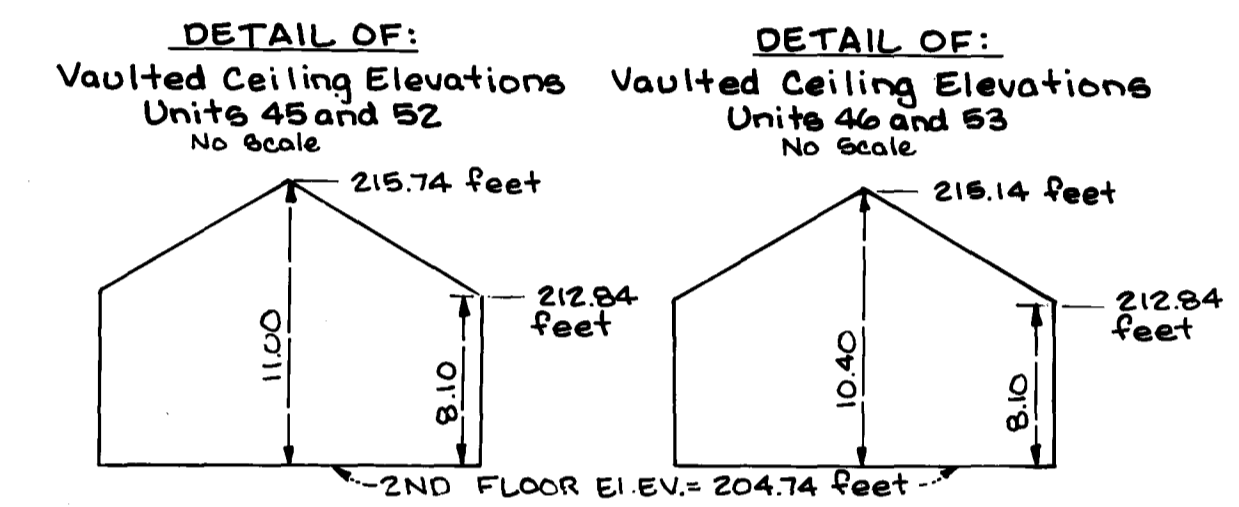
# CONDOMINIUM NUMBER 36 UNIVERSITY HEIGHTS ONE CONDOMINIUM

## THIRD SUPPLEMENTAL FLOOR PLANS

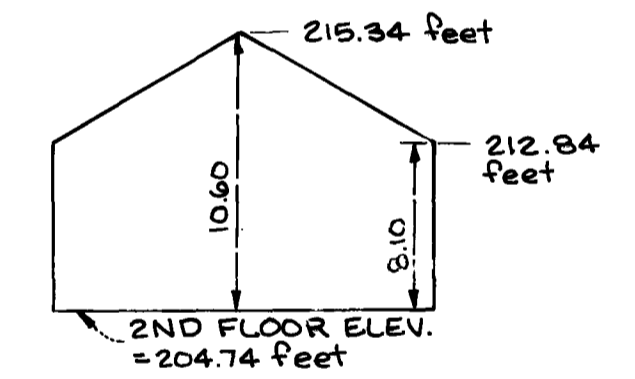


### SECOND FLOOR LEVEL

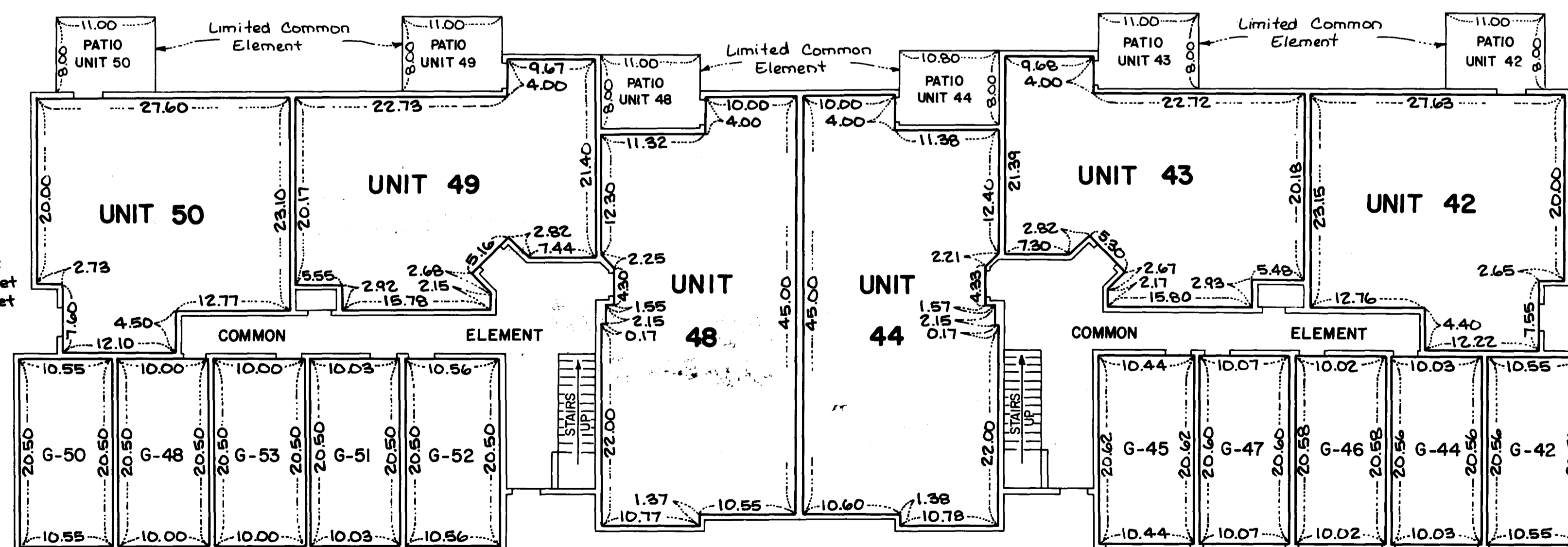
SECOND FLOOR ELEVATIONS:  
 Ceiling Elevation = 212.84 feet  
 Floor Elevation = 204.74 feet



DETAIL OF:  
 Vaulted Ceiling Elevations  
 Units 47 and 51  
 No Scale



### BUILDING NO. 6

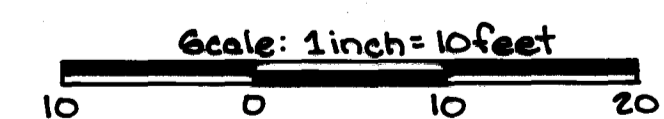
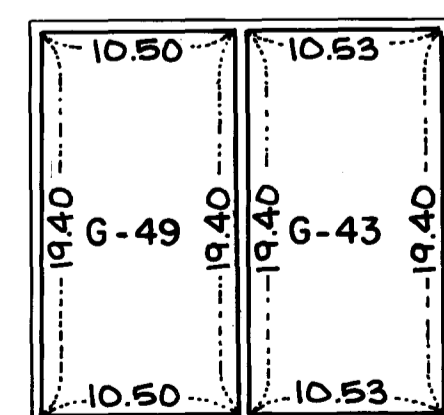


### FIRST FLOOR LEVEL

FIRST FLOOR ELEVATIONS:  
 Ceiling Elevation = 202.99 feet  
 Floor Elevation = 194.89 feet

GARAGE UNIT ELEVATIONS:  
 UNITS G-48, G-50, G-51, G-52, G-53  
 Ceiling Elevation = 202.99 feet  
 Floor Elevation = 194.46 feet  
 UNITS G-42, G-44, G-45, G-46, G-47  
 Ceiling Elevation = 202.99 feet  
 Floor Elevation = 194.46 feet

GARAGE NO. 4  
 GARAGE FLOOR ELEVATIONS:  
 Ceiling Elevation = 202.66 feet  
 Floor Elevation = 194.38 feet



Elevations shown are referenced to a benchmark shown on the Site Plan.

Measurements shown are from inside stud wall to inside stud wall.

LOT SURVEYS COMPANY, INC.  
 LAND SURVEYORS