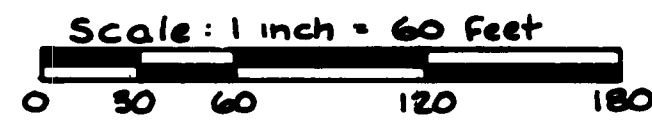


CONDOMINIUM NUMBER 37 CREEK MEADOWS CARRIAGE HOMES A CONDOMINIUM

These Seventh Supplemental Floor Plans are part of the Declaration filed or recorded as Document No. 153564 on this 12th day of August, 1986.

LOT SURVEYS COMPANY, INC.
LAND SURVEYORS

SITE PLAN

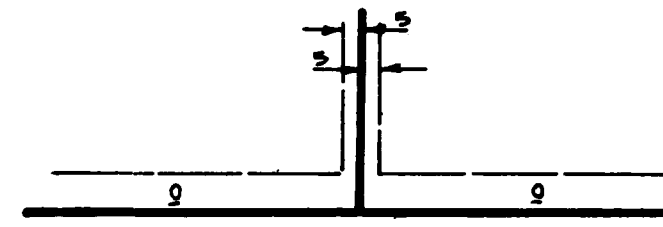


For the purpose of this plat the West Line of the SW 1/4, Section 14, T31, R24, is assumed to bear N1° 22' 36" W.

o Denotes Iron Monument

SEVENTH SUPPLEMENTAL CONDOMINIUM PLAT (FLOOR PLANS)

Utility & Drainage Easements are shown thus:



Being 5 feet in width and adjoining lot lines, unless otherwise indicated, and 10 feet in width and adjoining right-of-way lines, as shown on the plat.

The undersigned, being first duly sworn under oath, certifies and deposes that these Seventh Supplemental Floor Plans of Condominium No. 37, CREEK MEADOWS CARRIAGE HOMES, A CONDOMINIUM, being located upon

Lot 3, Block 1, CREEK MEADOWS
and the Additional Real Estate described as follows:

Lot 4, Block 1, CREEK MEADOWS

fully and accurately depicts all information required by Minnesota Statutes Section 515A. 2-110. Dated this 4th day of AUGUST, 1986.

Raymond A. Prasch

Raymond A. Prasch, Registered Land Surveyor
Minnesota Registration No. 6743

State of Minnesota

County of Hennepin The foregoing instrument was acknowledged before me this 4th day of AUGUST, 1986, by Raymond A. Prasch, a registered professional land surveyor.



Milton E. Hyland

Milton E. Hyland, Notary Public, Hennepin County, Minnesota
My Commission Expires November 19, 1987

NORMAN WELLS, a registered professional ARCHITECT for the State of Minnesota pursuant to Minnesota Statutes Section 515A. 2-101 (b) and (c) does hereby certify that all structural components and mechanical systems serving more than one unit of all buildings containing or comprising any units hereby created are substantially completed consistent with the Seventh Supplemental Floor Plans for Condominium No. 37 CREEK MEADOWS CARRIAGE HOMES, A CONDOMINIUM, and that all the units are entirely completed consistent with said Floor Plans. Dated this 4th day of AUGUST, 1986.

Norman Wells

Minnesota Registration No. 11782

State of Minnesota

County of HENN The foregoing instrument was acknowledged before me this 4th day of AUGUST, 1986, by NORMAN WELLS, a registered professional ARCHITECT.

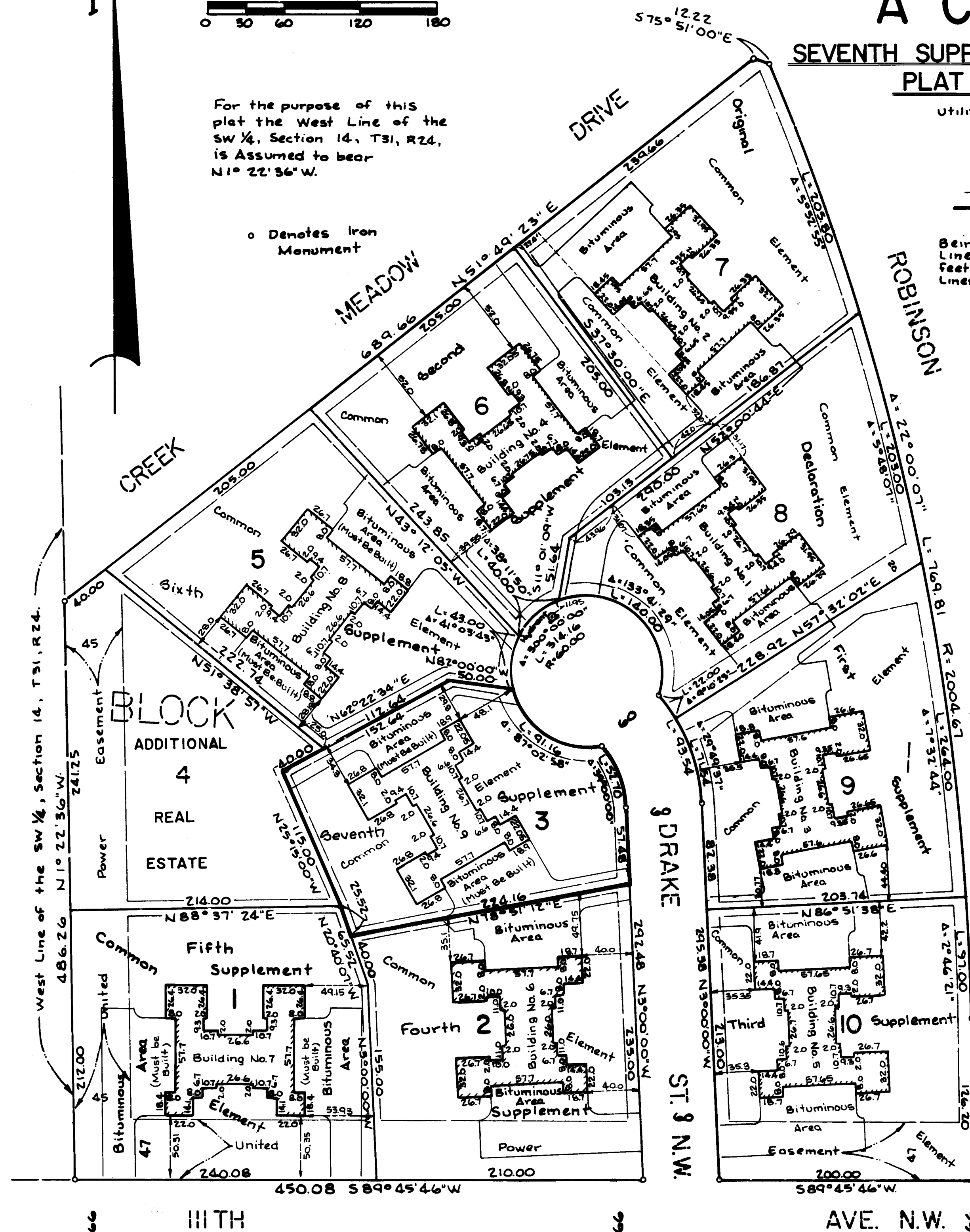


Judith N. Payton

Notary Public, HENN County, Minnesota
My Commission Expires July 28, 1991

Checked and approved this 5th day of AUGUST, 1986.

Roland W. Anderson
Anoka County Surveyor



Benchmark:
Top of Hydrant 11.95 feet South of
SE Corner Lot 6, Block 1, Creek Meadows
Elevation - 862.60 feet N.G.V.D. 1929

"NO DELINQUENT TAXES
AND TRANSFER ENTERED"

August 12, 1986
Charles R. DeFolore
Auditor, Anoka County

BY *Spull M. Sawyer*
Deputy

Office of REGISTRAR OF TITLES
STATE OF MINNESOTA
COUNTY OF ANOKA
I hereby certify that the within instrument was filed in this office on the 12th day of AUGUST, A.D. 1986, at 4:05 o'clock P.M.
J. J. Dondell
By *K. Anderson*
DEPUTY REGISTRAR OF TITLES

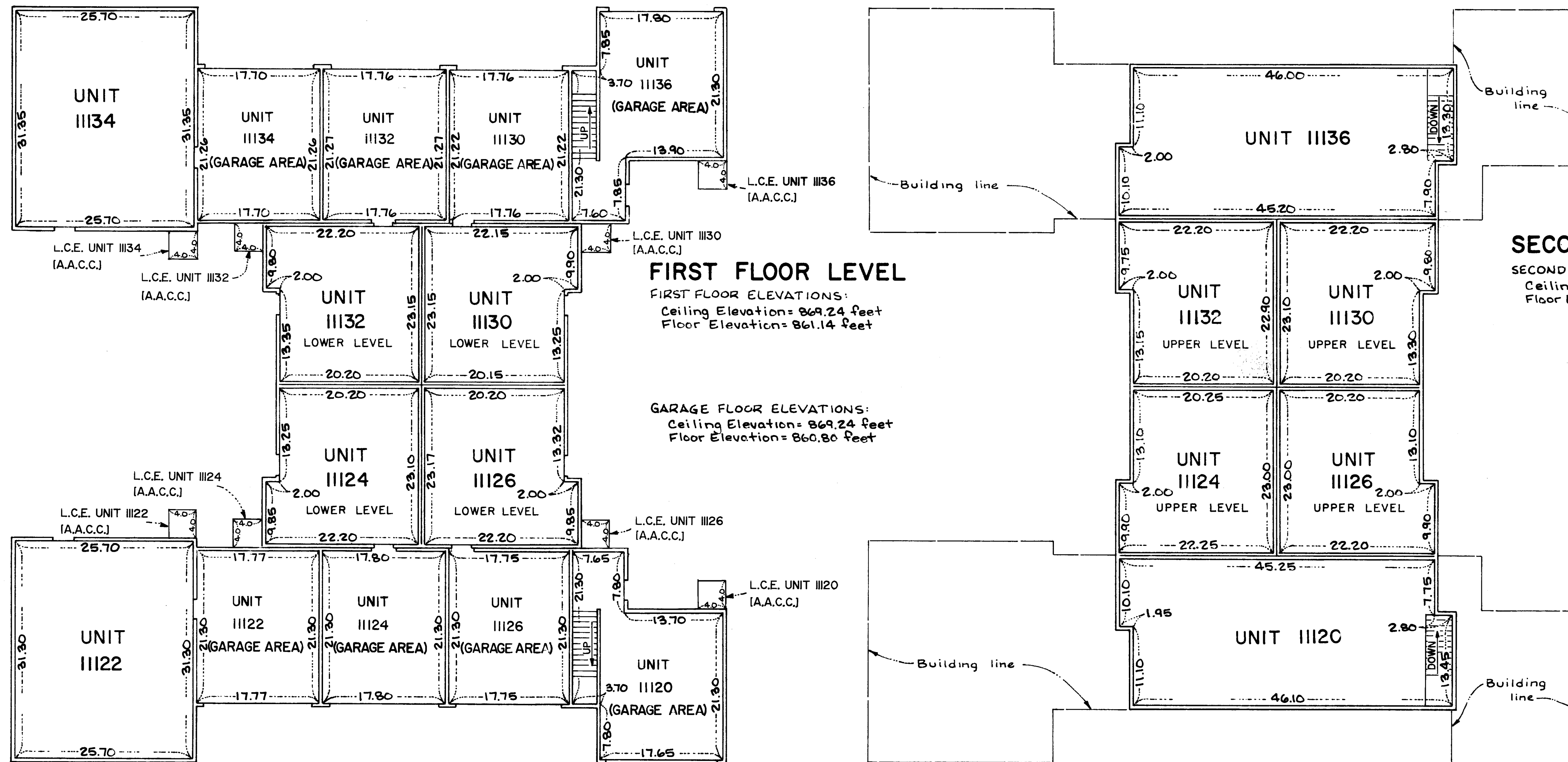
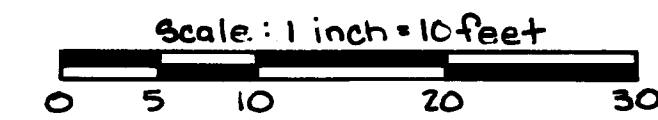
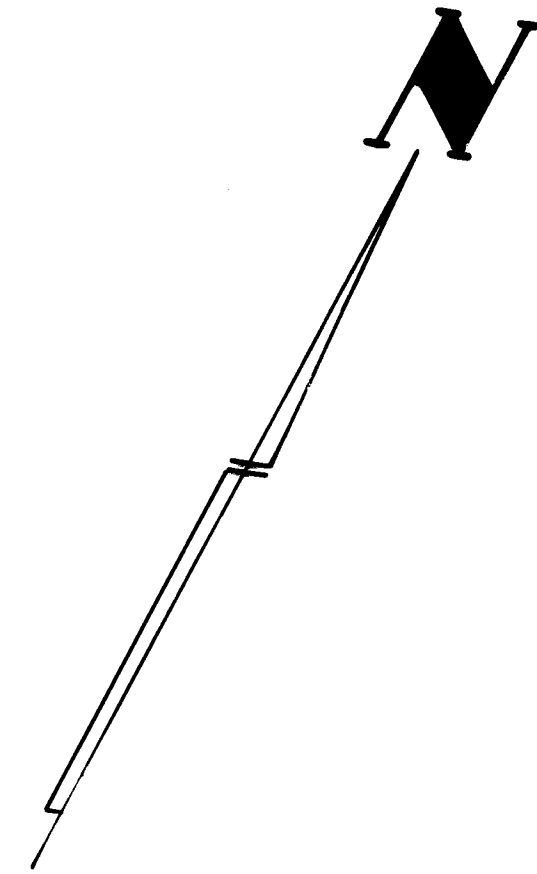
153564

CONDOMINIUM NUMBER 37 CREEK MEADOWS CARRIAGE HOMES A CONDOMINIUM

SEVENTH SUPPLEMENTAL CONDOMINIUM PLAT
(FLOOR PLANS)

BUILDING NO. 9

LOT SURVEYS COMPANY, INC.
LAND SURVEYORS



Measurements shown are from inside stud wall to inside stud wall.

L.C.E. Denotes Limited Common Element
A.A.C.C. Denotes Area for Air Conditioner Compressor

Elevations shown are referenced to a Benchmark shown on the site plan.