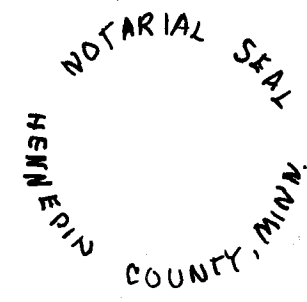


The undersigned, being first duly sworn under oath, certifies and deposes that within the set of floor plans of RAD Condominium I consisting of 2 pages numbered consecutively 1 through 2 fully and accurately depicts the layout, location, condominium numbers, & dimensions of condominiums as built, required by M.S.A. 515.2-110. It also represents an accurate copy of portions of plans of the Building as filed with and approved by the City Of Blaine, Minnesota 55434

Dewayne C. Olson
Dewayne C. Olson
Minn. Reg. No. 6537

Subscribed and sworn to before, a Notary Public this 23rd day of July, 1980, State of Minnesota, County of Hennepin. Notary Public Hennepin County, Minnesota. My Commission expires July 17, 1986

Rogn W. Nelson

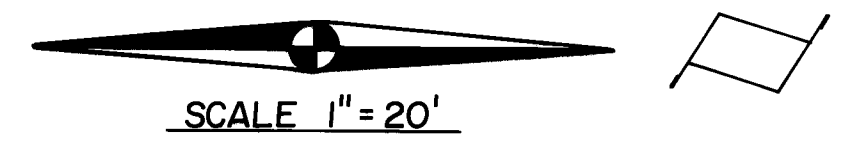


FOR EXACT DISTANCE TO RADISSON ROAD CHECK WITH, LEROY H. WINNER & ASSOC. INC., LAND SURVEYORS 8729 CENTRAL AVENUE N.E. BLAINE, MINN. 55434 PHONE: 784-0210

APARTMENT OWNERSHIP NO. 4 RAD CONDOMINIUM I

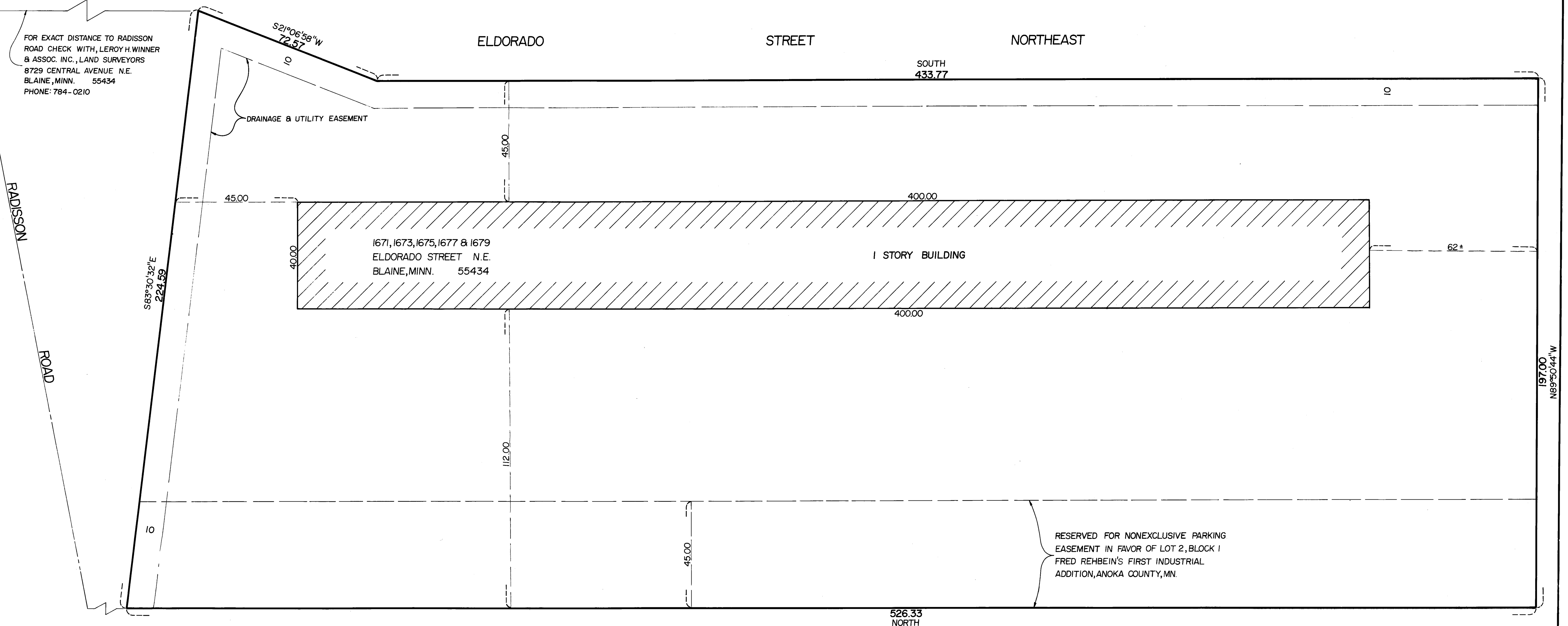
COUNTY RECORDER, ANOKA COUNTY, MINNESOTA
I hereby certify that the within Floor Plans of Apartment Ownership Number 4 was recorded in this office this 29 day of July 1980 A.D. at 3:35 o'clock P.M. in Book 1 of Apartment Ownership at Page 2
Ted J. Omdahl, County Recorder by *P. L. Hollermeier*, Deputy.

DOC. NO. 552994
APARTMENT OWNERSHIP DECLARATION
DOC. NO. 552993
FILING DATE JULY 29, 1980



DESCRIPTION

LOT 1, BLOCK 1, FRED REHBEIN'S FIRST INDUSTRIAL ADDITION, ANOKA COUNTY, MINNESOTA.
SUBJECT TO A DRAINAGE AND UTILITY EASEMENT OVER THE SOUTHERLY AND EASTERLY 10 FEET THEREOF.



RESERVED FOR NONEXCLUSIVE PARKING EASEMENT IN FAVOR OF LOT 2, BLOCK 1 FRED REHBEIN'S FIRST INDUSTRIAL ADDITION, ANOKA COUNTY, MN.

APR 19 02 JUL 29 80 75.00 A.

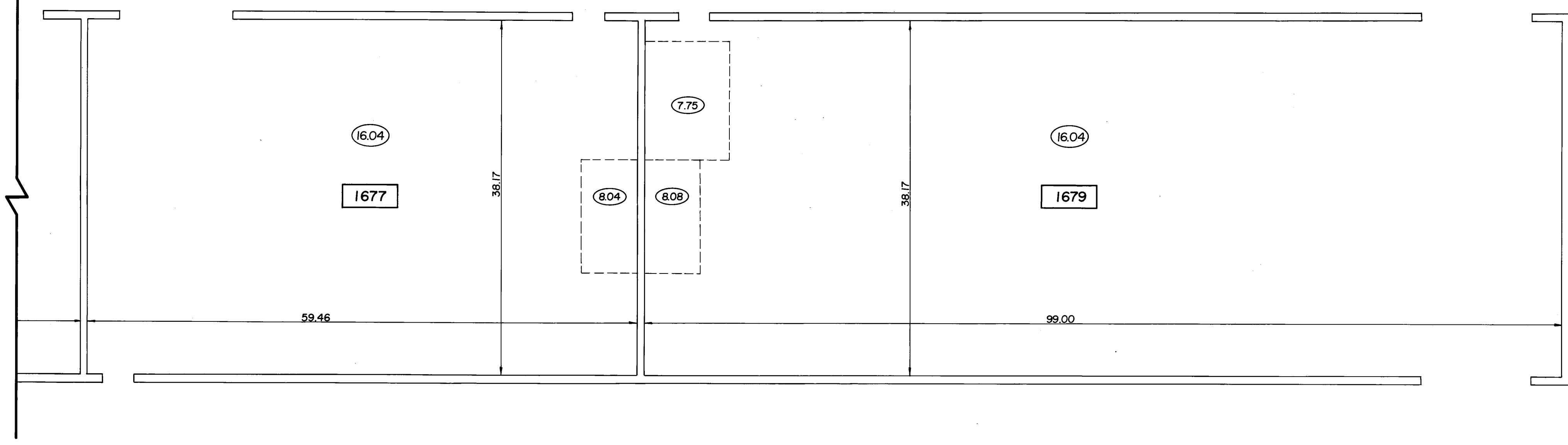
DEWAYNE C. OLSON
CONSULTING ENGINEERS INC.
1611 HIGHWAY 10 N.E.
MPLS., MN. 55432
Tel. (612) 780-1540

I HEREBY CERTIFY THAT THIS PLAN WAS PREPARED BY ME, OR UNDER MY DIRECT SUPERVISION, AND THAT I AM A DULY REGISTERED PROFESSIONAL ENGINEER UNDER THE LAWS OF THE STATE OF MINNESOTA.
DATE 7/23/80 REG. NO. 6537
Dewayne C. Olson

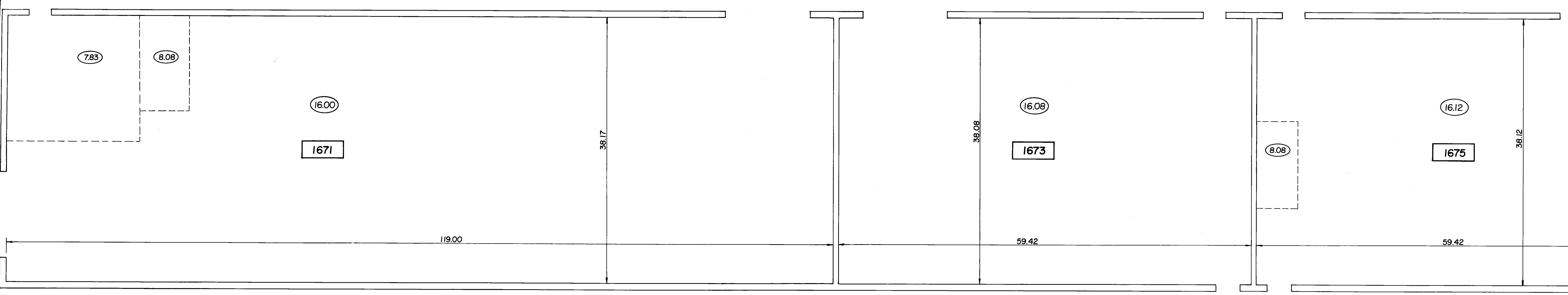
SHEET 1 OF 2 SHEETS

APARTMENT OWNERSHIP NO. 4 RAD CONDOMINIUM I

MATCH LINE



MATCH LINE



FLOOR PLAN
SCALE - 1/8" = 1'-0"

(16.04) Denotes ceiling height, dashed line denotes change in clg. hght.
[1675] Denotes condominium number.

DEWAYNE C. OLSON
CONSULTING ENGINEERS INC.
1611 HIGHWAY 10 N.E.
MPLS., MN. 55432
Tel. (612) 780-1540

I HEREBY CERTIFY THAT THIS PLAN WAS PREPARED BY ME, OR UNDER MY DIRECT SUPERVISION, AND THAT I AM A DULY REGISTERED PROFESSIONAL ENGINEER UNDER THE LAWS OF THE STATE OF MINNESOTA.
DATE 7/23/80 REG. NO. 6537
Dewayne C. Olson

SHEET
2
OF
2
SHEETS