

# CONDOMINIUM NUMBER 49 TRALEE CONDOMINIUMS

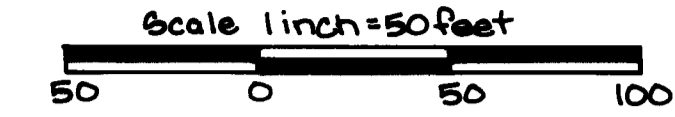
This Condominium Plat is part of the Declaration filed or recorded as Document No. 802742 on this 8<sup>th</sup> day of April, 1988.

**LOT SURVEYS COMPANY, INC.**  
LAND SURVEYORS

## CONDOMINIUM PLAT

### SITE PLAN

TRACT B



o Denotes Iron Monument  
Utility & Drainage Easements per plat of Tralee Terrace Addition

The undersigned, being first duly sworn under oath certifies and deposes that this Condominium Plat of the Condominium No. 49, TRALEE CONDOMINIUMS, being located upon

Lot 1, Block 1, TRALEE TERRACE ADDITION  
Outlot C TRALEE TERRACE ADDITION

and the Additional Real Estate is described as follows:

Lots 2, 3, 4, 5, 6, 7, 8 and 9, Block 1, TRALEE TERRACE ADDITION

fully and accurately depicts all information required by Minnesota Statutes Section 515A. 2-110.

Dated this 29<sup>th</sup> day of MARCH, 1988.

*Raymond A. Prasch*  
Raymond A. Prasch, Registered Land Surveyor  
Minnesota Registration No. 6743

State of Minnesota) s.s.  
County of Hennepin) The foregoing instrument was acknowledged before me this 29<sup>th</sup> day of MARCH, 1988,  
by Raymond A. Prasch, a registered professional land surveyor.

*Milton E. Hyland*  
MILTON E. HYLAND  
NOTARY PUBLIC—MINNESOTA  
HENNEPIN COUNTY  
My Commission Expires 11-18-93

Donald J. Baker, a registered professional ARCHITECT for the State of Minnesota pursuant to Minnesota Statutes Section 515A. 2-101 (b) and (c) does hereby certify that all structural components and mechanical systems serving more than one unit of all buildings containing or comprising any units hereby created are substantially completed consistent with the Condominium Plat of Condominium No. 49, TRALEE CONDOMINIUMS, and that all units are entirely completed consistent with said Condominium Plat.

Dated this 4<sup>th</sup> day of APRIL, 1988.

*Donald J. Baker*  
Minnesota Registration No. 9861

State of Minnesota) s.s.  
County of Washington) The foregoing instrument was acknowledged before me this 4<sup>th</sup> day of April, 1988, by  
Donald J. Baker, a registered professional Architect

*Ann Marie Paipal*  
ANN MARIE PAIPAL  
NOTARY PUBLIC—MINNESOTA  
WASHINGTON COUNTY  
My Commission Expires 6-3-93

*Ann Marie Paipal*  
Notary Public, Washington County, Minnesota  
My Commission Expires 6-3-93

Checked and approved this 7<sup>th</sup> day of APRIL, 1988.

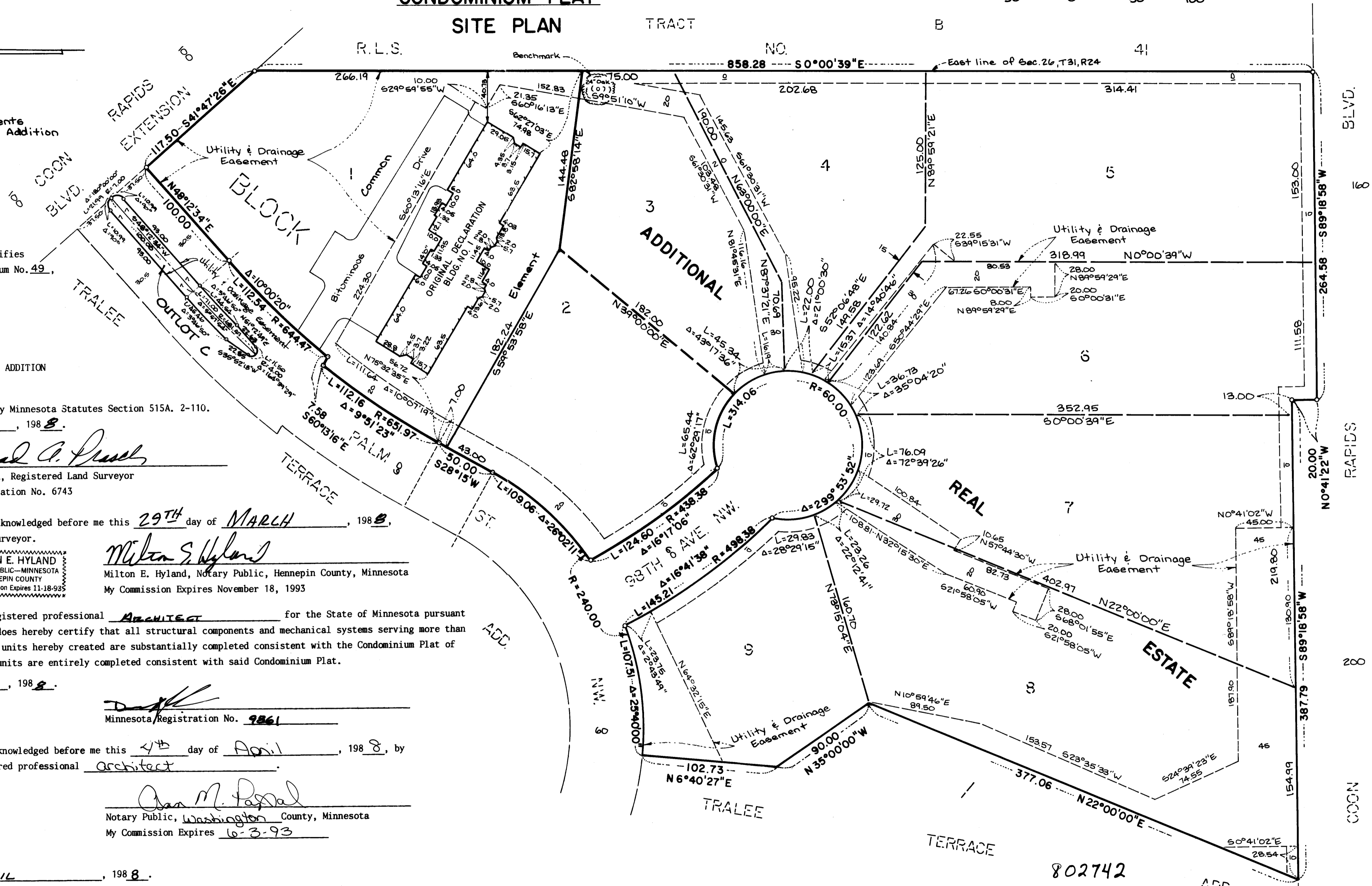
*Merlyn D. Anderson*  
MERLYN D. ANDERSON  
Anoka County Surveyor  
by *Larry D. Aboni*  
deputy

"NO DELINQUENT TAXES AND TRANSFER ENTRIES"  
*April 8th 1988*  
*Charles R. Campbell*  
Recorder, Anoka County  
*Deanna Schultz*  
deputy

Benchmark: Spike in west face of 24" Oak 20 feet southwest of the northeast corner of Lot 3, Block 1 Tralee Terrace Add Elev. = 874.00 feet (N.G.V.D 1929 adj.)

For the purposes of this plat the East line of Sec. 26, T31, R24 is assumed to bear S0°00'39"E

802742  
OFFICE OF COUNTY RECORDER  
STATE OF MINNESOTA, COUNTY OF ANOKA  
I hereby certify that the within instrument was filed in this office for record on the APR 8 1988 A.D., 19  
9 o'clock A.M., and was duly recorded in book 308 Condos page 28  
*Ted J. Oundell*  
County Recorder  
By *Sue Kay Eye*

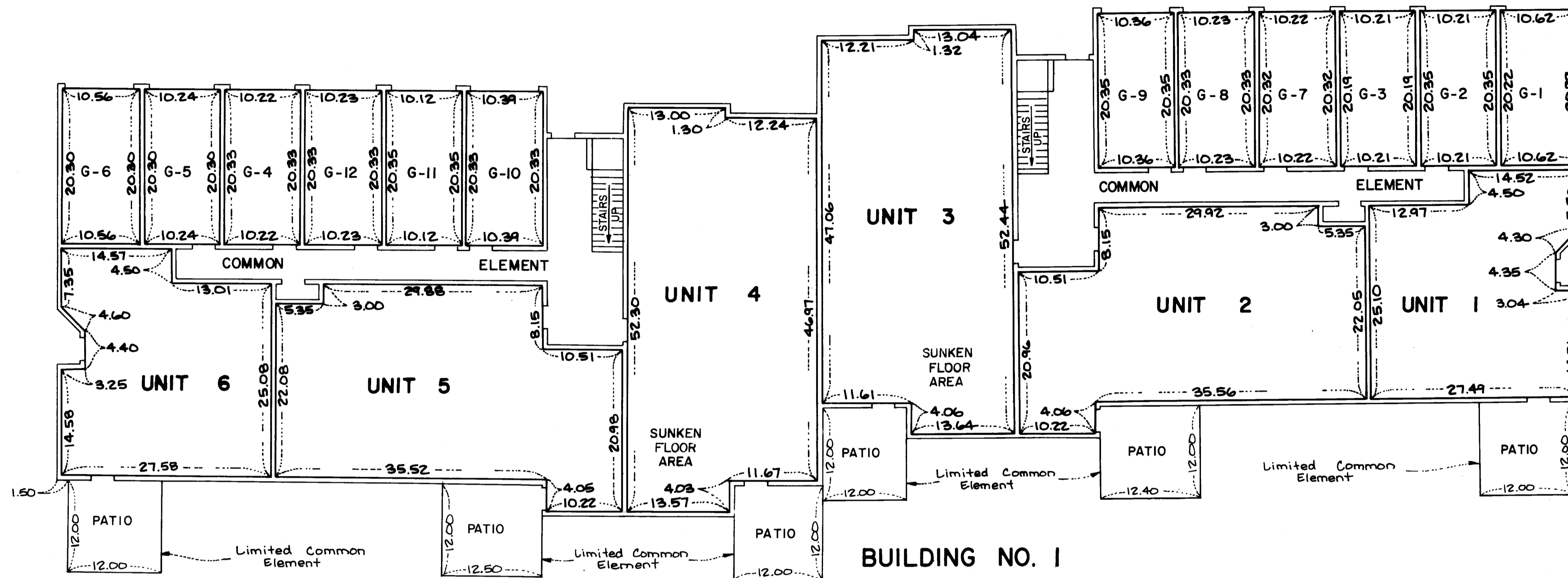
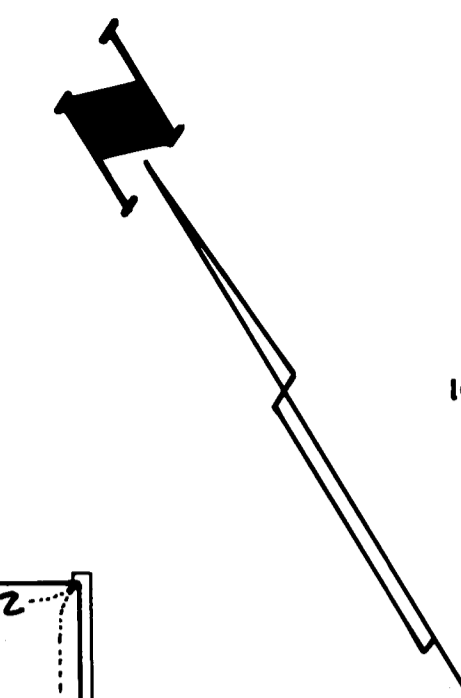
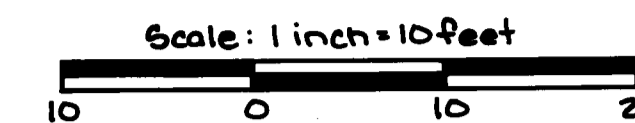


# CONDOMINIUM NUMBER 49 TRALEE CONDOMINIUMS

LOT SURVEYS COMPANY, INC.  
LAND SURVEYORS

CONDOMINIUM PLAT

FLOOR PLANS

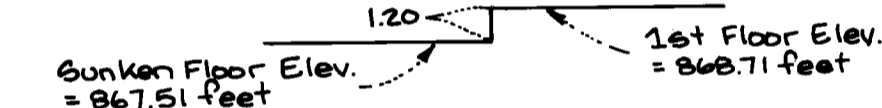


### FIRST FLOOR LEVEL

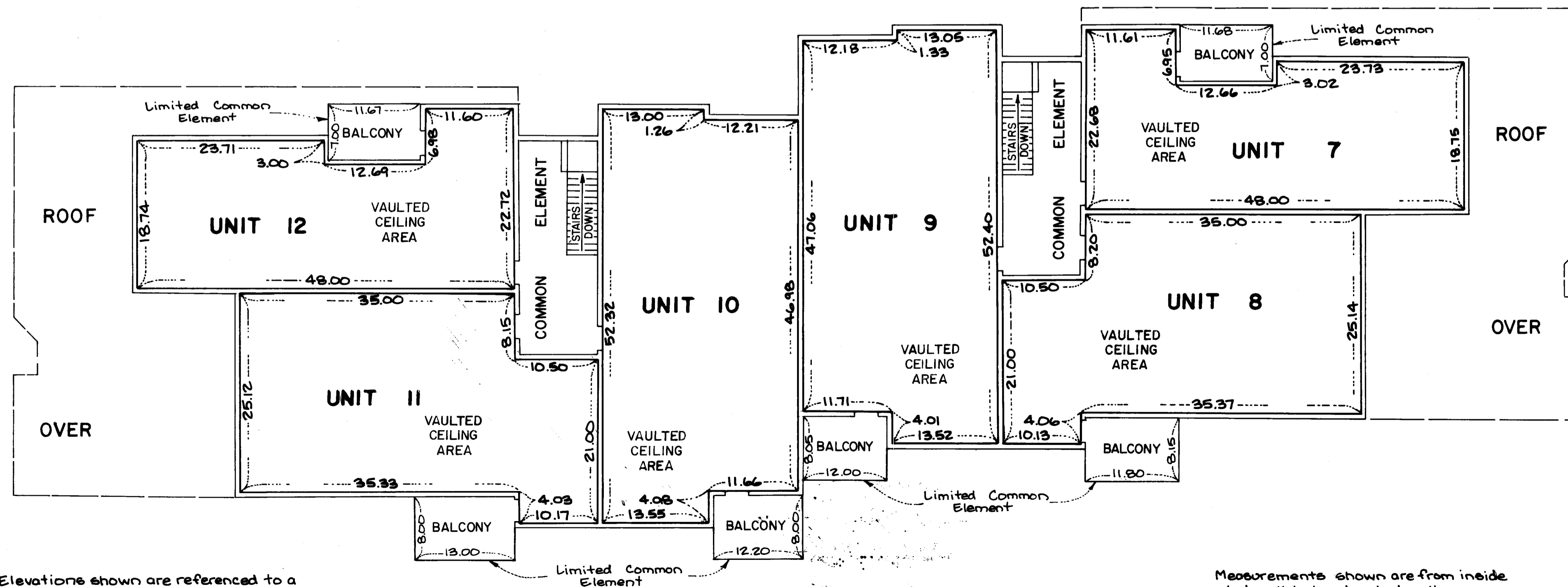
FIRST FLOOR ELEVATIONS:  
Ceiling Elevation = 876.81 feet  
Floor Elevation = 868.71 feet

GARAGE FLOOR ELEVATIONS:  
Units G-1, G-2, G-3, G-7, G-8 & G-9  
Ceiling Elevation = 876.81 feet  
Floor Elevation = 868.76 feet  
Units G-4, G-5, G-6, G-10, G-11 & G-12  
Ceiling Elevation = 876.81 feet  
Floor Elevation = 868.36 feet

Detail of:  
Sunken Floor Elevations  
Units 3 and 4  
No Scale



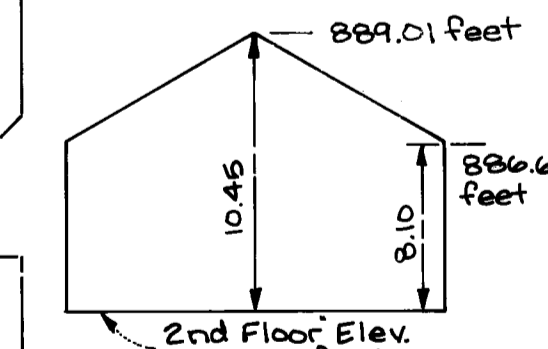
### BUILDING NO. 1



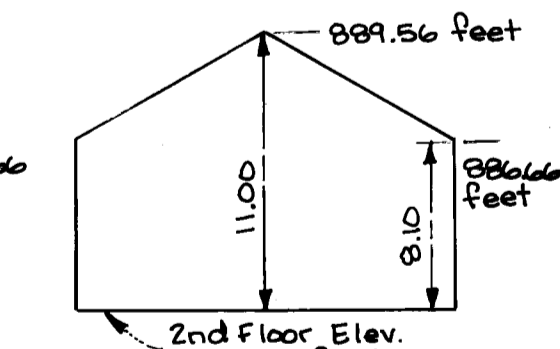
### SECOND FLOOR LEVEL

SECOND FLOOR ELEVATIONS:  
Ceiling Elevation = 886.66 feet  
Floor Elevation = 878.56 feet

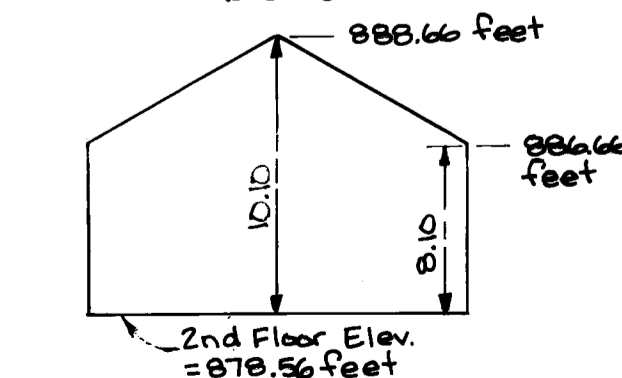
Detail of:  
Vaulted Ceiling Elevations  
Units 8 & 11  
No Scale



Detail of:  
Vaulted Ceiling Elevations  
Unit 7 & 12  
No Scale



Detail of:  
Vaulted Ceiling Elevations  
Units 9 & 10  
No Scale



Elevations shown are referenced to a benchmark shown on the Site Plan.

Measurements shown are from inside stud wall to inside stud wall.