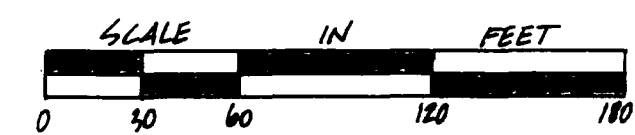
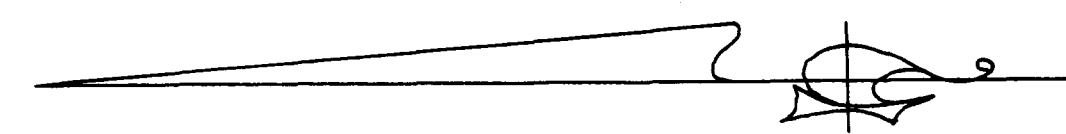


CONDOMINIUM NUMBER 52 SHENANDOAH VILLAS OF COON RAPIDS, A CONDOMINIUM SITE PLAN

This Condominium plat is part of the Declaration filed as Document number 193257 on the 26th day of January, 1990.



Scale: 1 inch = 60 feet

- denotes found monument
- denotes 1/2 inch by 14 inch iron pipe set and marked with R.L.S. number 14891, unless otherwise noted.

Benchmark:
Top Nat Hydrant E. side of C.S.A.H. No. 9 150 feet ± S. of 131st Ln. NW. elevation - 876.13 feet N.G.V.D. 1929.

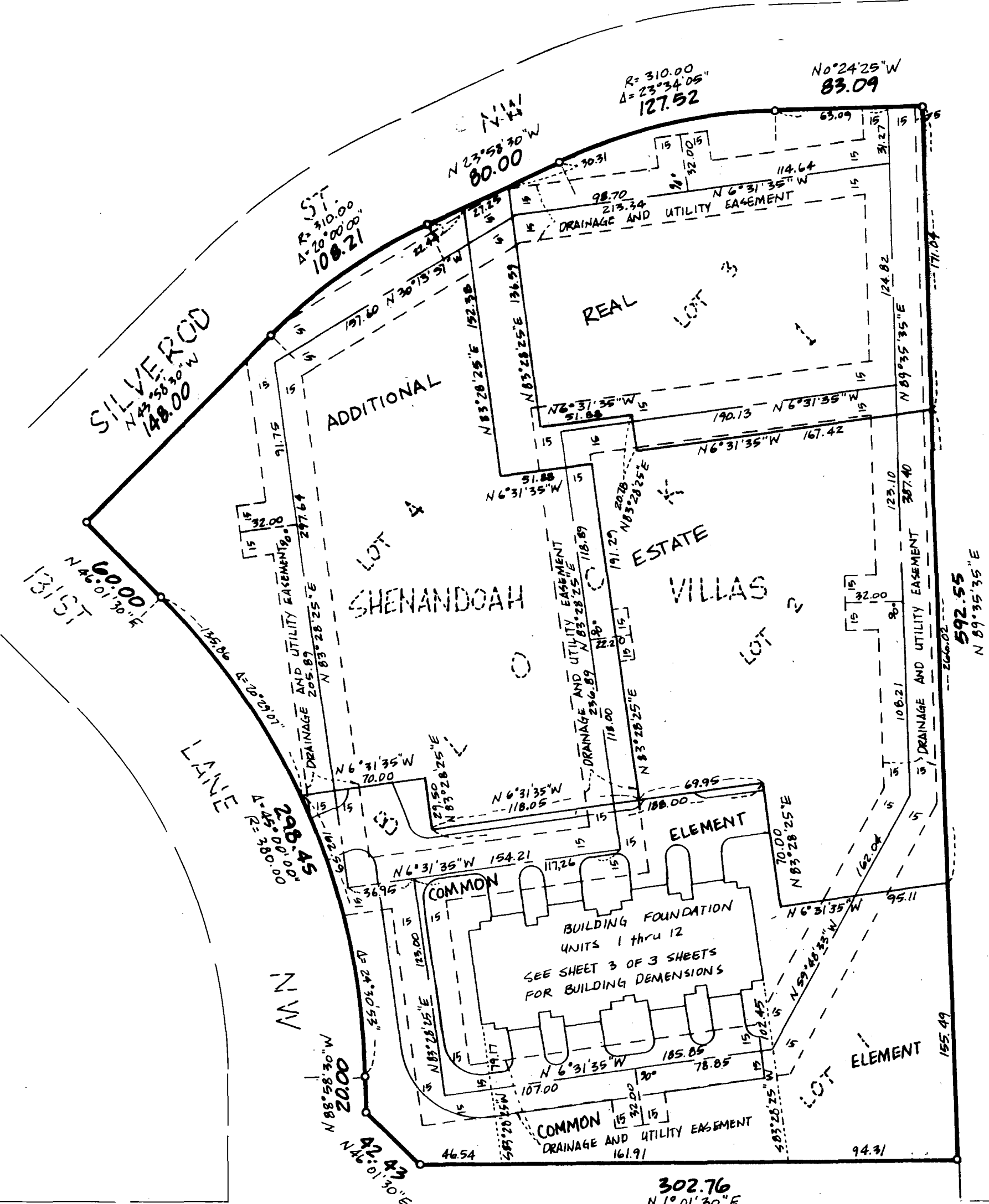
The West line of the NE 1/4 is assumed to bear S. 1°01'30"W.

193257

Office of REGISTRAR OF TITLES
STATE OF MINNESOTA
COUNTY OF ANOKA

I hereby certify that the above instrument was filed in the office on the 26th day of January, 1990, 3:00 o'clock P.M.

By Katherine A. Dols
REGISTRAR OF TITLES



ROUND LAKE BOULEVARD
(C.S.A.H. NO. 9) PARCEL 1

ANOKA COUNTY HIGHWAY RIGHT-OF-WAY
PLAT NO. 10

I Robert B. Sikich being first duly sworn under oath certify and depose that this Condominium Plat of CONDOMINIUM NUMBER 52, SHENANDOAH VILLAS, A CONDOMINIUM being located upon

- Lot 1, Block 1, SHENANDOAH VILLAS
- and the Additional Real Estate described as follows:
- Lots 2, 3, and 4, Block 1, SHENANDOAH VILLAS

fully and accurately depicts all information required by Minnesota Statutes, Section 515 A. 2-110, as amended.

Dated this 12th day of December, 19 89.

Robert B. Sikich
Robert B. Sikich, Land Surveyor
Minnesota Registration No. 14891

STATE OF MINNESOTA
COUNTY OF DAKOTA ss.

The foregoing instrument was acknowledged before me this 12th day of December, 19 89, by Robert B. Sikich, a Registered Professional Land Surveyor.

KATHERINE A. DOLS
NOTARY PUBLIC, MINNESOTA
HENNEPIN COUNTY
My Commission Expires April 29, 1991

Katherine A. Dols
Notary Public, Hennepin County, Minnesota
My Commission Expires 4-29-91

I, Timothy Whitten a Registered Professional Architect for the State of Minnesota pursuant to Minnesota Statutes, Section 515 A. 2-101 (b), do hereby certify that all structural components and mechanical systems serving more than one unit of all buildings containing or comprising any units here by created, are substantially completed consistent with this Condominium Plat, CONDOMINIUM NUMBER 52, SHENANDOAH VILLAS, A CONDOMINIUM, OF COON RAPIDS,

Dated this 13th day of December, 19 89.

Timothy Whitten
Registered Professional Architect
Minnesota Registration No. 10261

STATE OF MINNESOTA
COUNTY OF HENNEPIN ss.

The foregoing instrument was acknowledged before me this 13th day of December, 19 89, by Timothy Whitten, a Registered Professional Architect.

KATHERINE A. DOLS
NOTARY PUBLIC, MINNESOTA
HENNEPIN COUNTY
My Commission Expires April 29, 1991

Katherine A. Dols
Notary Public, Hennepin County, Minnesota
My Commission Expires 4-29-91

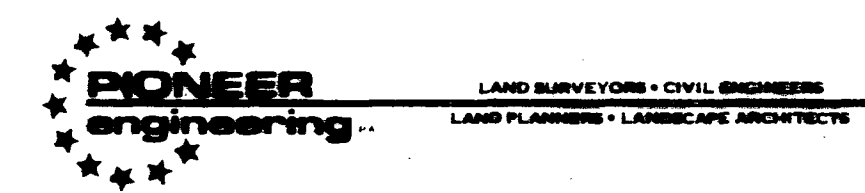
Checked and approved this 14th day of Dec., 19 89.

Mark D. Decker
Anoka County Surveyor

"NO DELINQUENT TAXES AND TRANSFER ENTLRED"

January 26th 1990
Charles R. Leeburn
Auditor, Anoka County

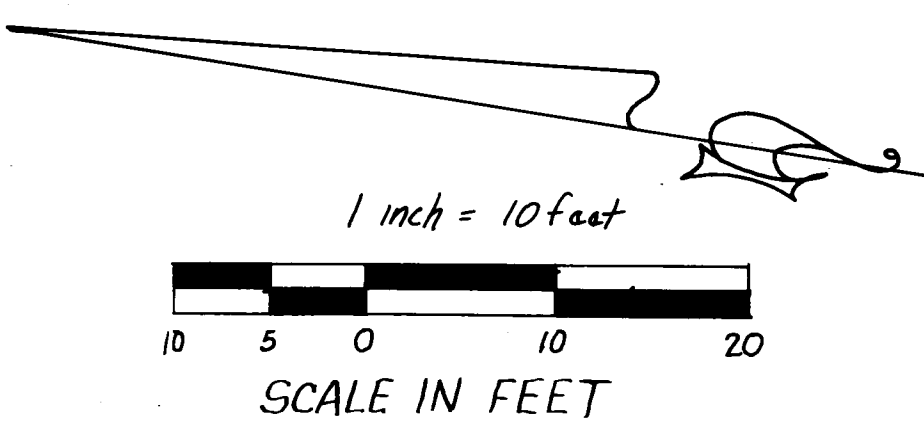
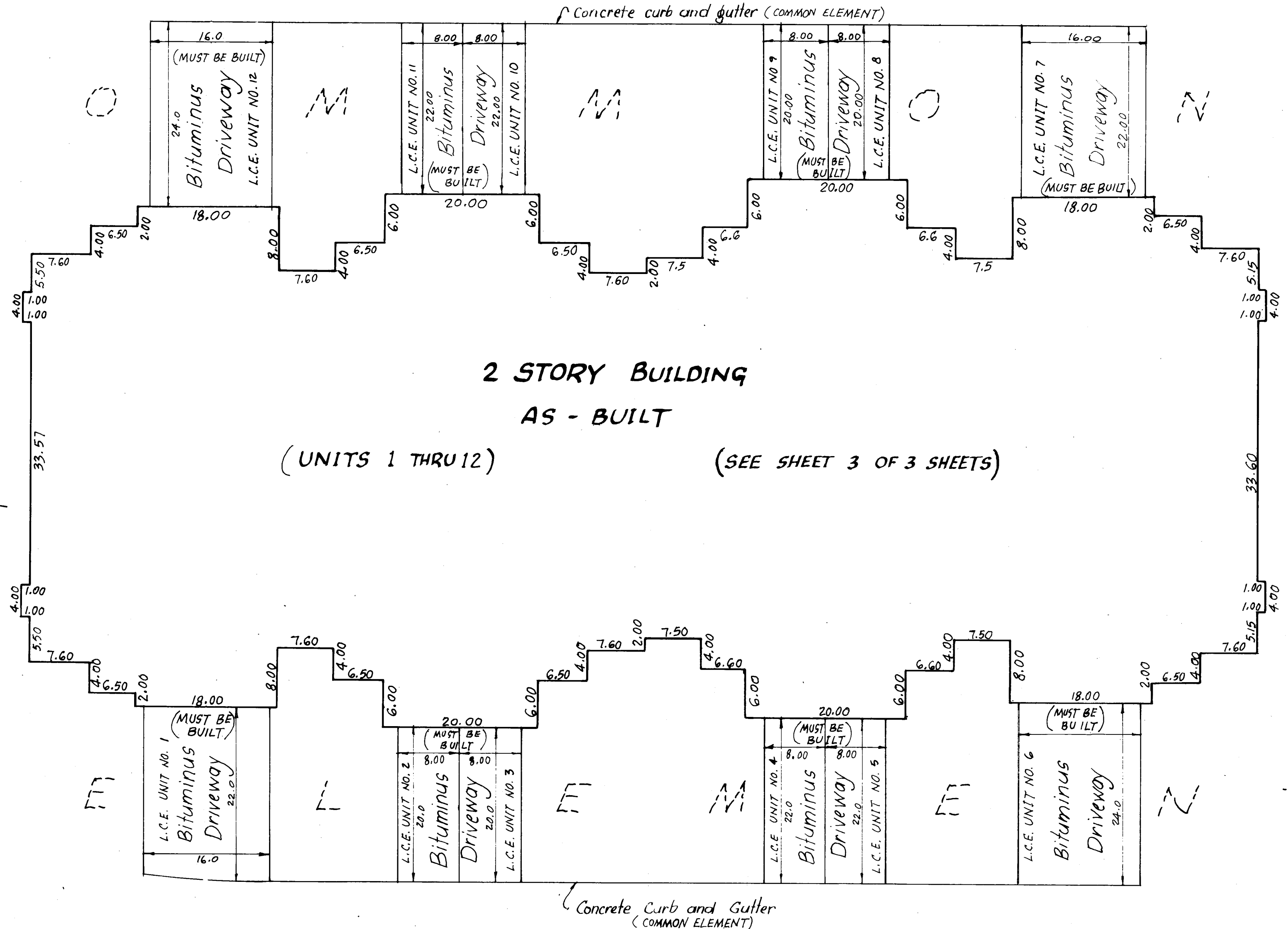
BY Deputy
Deputy



CONDOMINIUM NUMBER 52

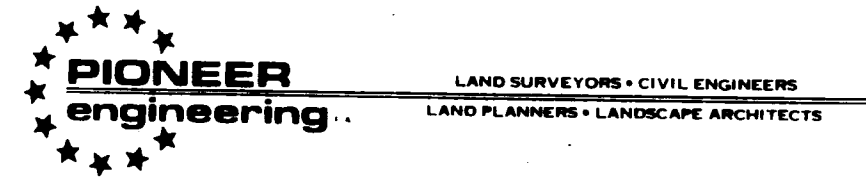
SHENANDOAH VILLAS OF COON RAPIDS, A CONDOMINIUM

SITE PLAN DETAIL



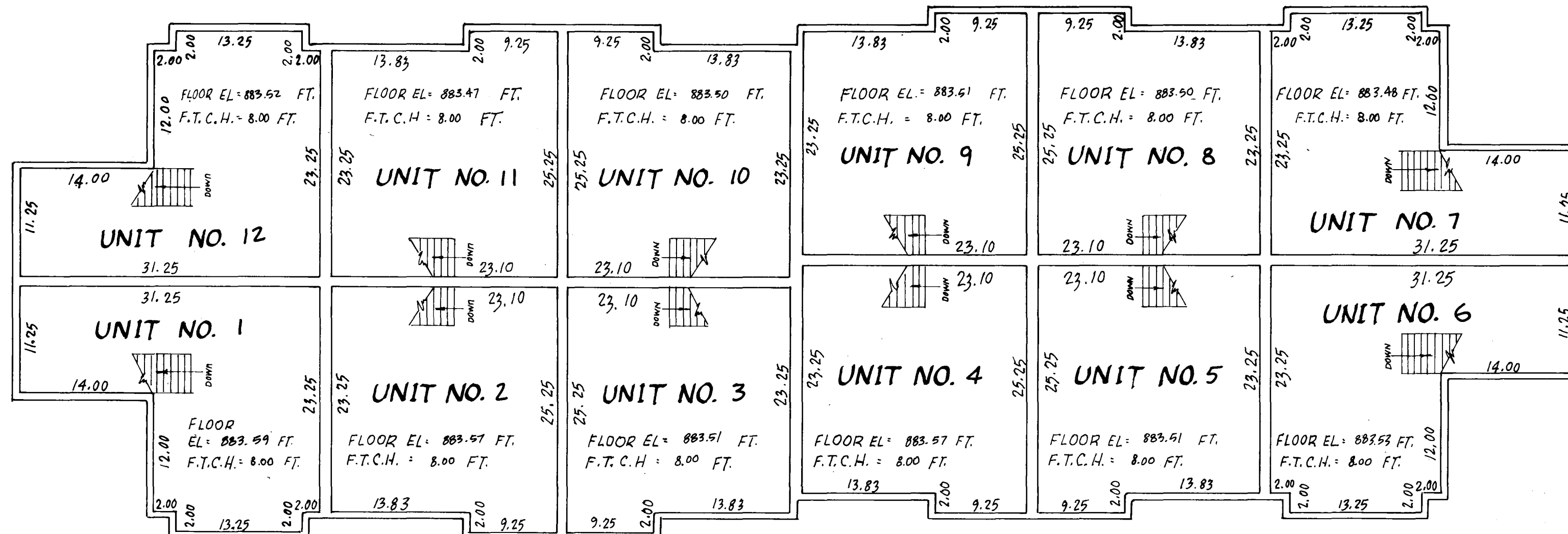
Blacktop Surfaces and curb and gutter are as built

Driveways must be built



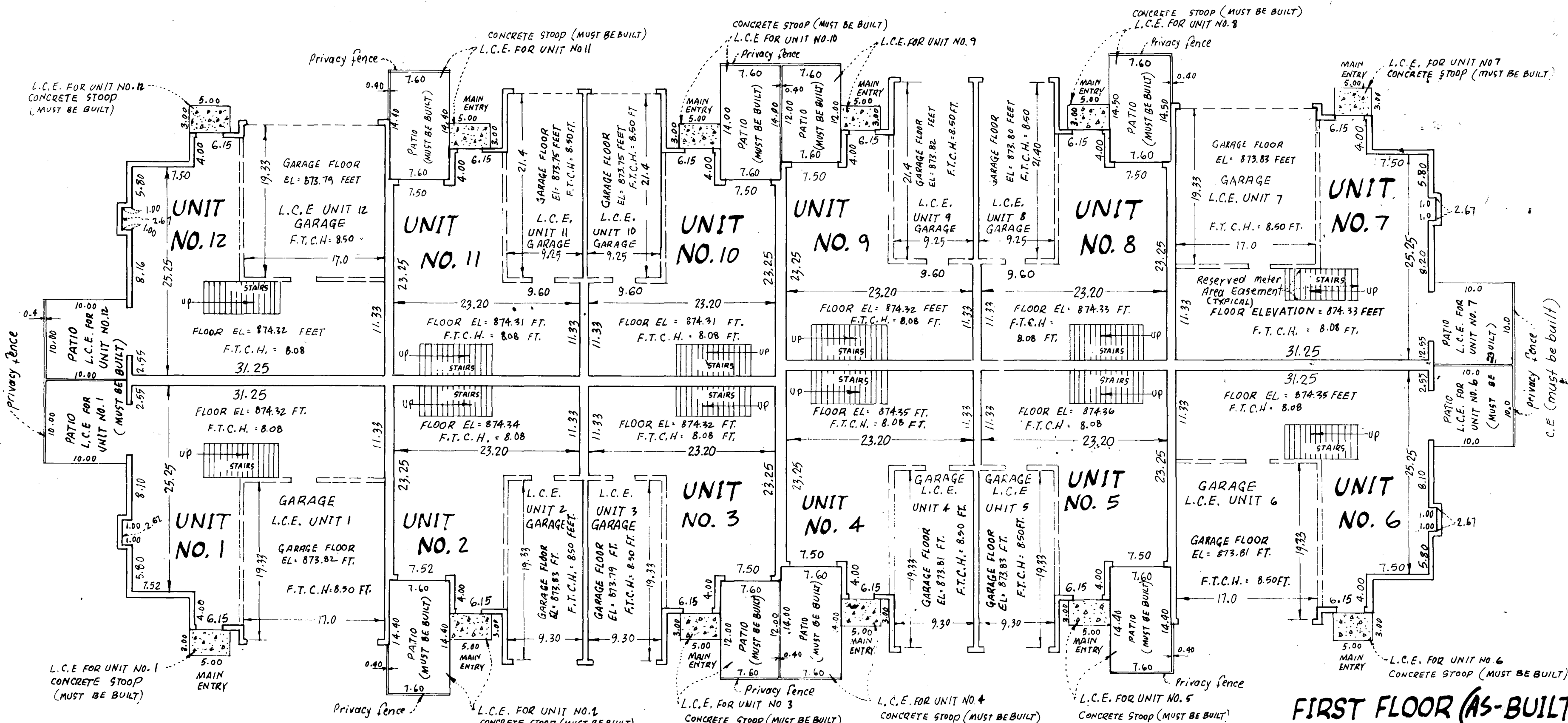
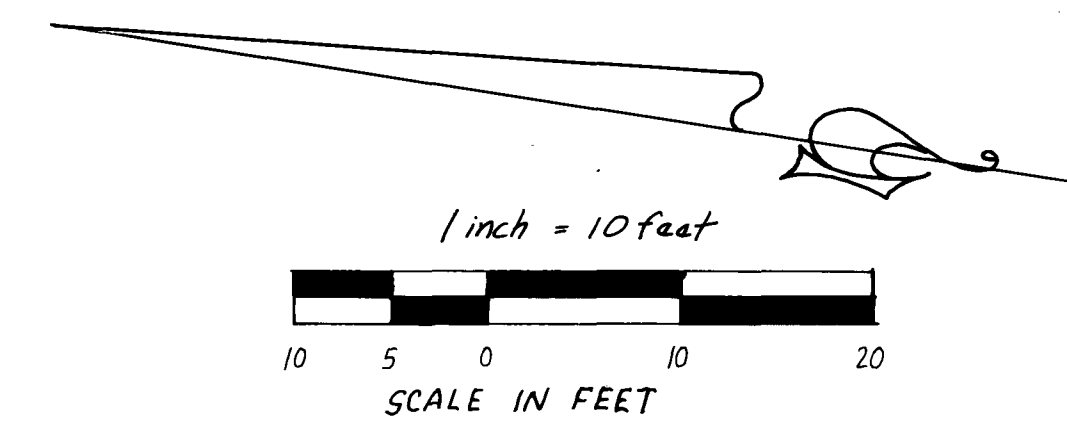
CONDOMINIUM NUMBER 52 SHENANDOAH VILLAS OF COON RAPIDS, A CONDOMINIUM FLOOR PLANS

BUILDING ON LOT 1, BLOCK 1 AS-BUILT



SECOND FLOOR (AS-BUILT)

UNIT NO.	UPPER LEVEL	LOWER LEVEL	GARAGE	TOTAL
UNIT NO. 1	585.0 sq. ft.	571.3 sq. ft.	328.6 sq. ft.	1484.9 sq. ft.
UNIT NO. 2	555.0 sq. ft.	450.15 sq. ft.	198.0 sq. ft.	1203.2 sq. ft.
UNIT NO. 3	555.0 sq. ft.	450.15 sq. ft.	198.0 sq. ft.	1203.2 sq. ft.
UNIT NO. 4	555.0 sq. ft.	450.15 sq. ft.	198.0 sq. ft.	1203.2 sq. ft.
UNIT NO. 5	555.0 sq. ft.	450.15 sq. ft.	198.0 sq. ft.	1203.2 sq. ft.
UNIT NO. 6	585.0 sq. ft.	571.3 sq. ft.	328.6 sq. ft.	1484.9 sq. ft.
UNIT NO. 7	585.0 sq. ft.	571.3 sq. ft.	328.6 sq. ft.	1484.9 sq. ft.
UNIT NO. 8	555.0 sq. ft.	450.15 sq. ft.	198.0 sq. ft.	1203.2 sq. ft.
UNIT NO. 9	555.0 sq. ft.	450.15 sq. ft.	198.0 sq. ft.	1203.2 sq. ft.
UNIT NO. 10	555.0 sq. ft.	450.15 sq. ft.	198.0 sq. ft.	1203.2 sq. ft.
UNIT NO. 11	555.0 sq. ft.	450.15 sq. ft.	198.0 sq. ft.	1203.2 sq. ft.
UNIT NO. 12	585.0 sq. ft.	571.3 sq. ft.	328.6 sq. ft.	1484.9 sq. ft.



FIRST FLOOR (AS-BUILT)

Interior Dimensions shown are measured to inside of sheetrock wall.
 C.E. Denotes Common Element
 F.T.C.H Denotes Floor To Ceiling Height
 L.C.E Denotes Limited Common Element

Elevations are referred to Benchmark as noted on site plan and are shown in feet and hundredths of a foot.

All privacy fences are Common Element and must be built

An easement on over and in the void under the stairway of each unit is designated as Reserved Meter Area Easement, as shown on Unit No. 7

