

# DAHLMEIER ACRES

ANOKA COUNTY, MINNESOTA

5735

Office of REGISTRAR OF TITLES  
STATE OF MINNESOTA  
COUNTY OF ANOKA  
I hereby certify that the within instrument  
was filed in this office on the 13 day of  
July A. D. 1948, at 1.0 o'clock P.M.  
Eva B. ... Registrar of Titles  
DEPUTY REGISTRAR OF TITLES

CARTWRIGHT & OLSON  
LAND SURVEYORS

KNOW ALL MEN BY THESE PRESENTS: That we, Stanley W. Dahlmeier and Frances A. Dahlmeier, his wife, owners and proprietors of the following described property, situate in the County of Anoka, State of Minnesota, to-wit: Lots 7 and 8, A Subdivision of the Northeast Quarter (N.E. 1/4) of Section Two (2), Township Thirty (30), Range Twenty-four (24), have caused the same to be surveyed and platted as DAHLMEIER ACRES, and do hereby donate and dedicate to the public, for public use forever, the Streets and Avenue as shown on the annexed plat. In witness whereof we have hereunto set our hands and seals on this 4th day of June 1948 A.D. in the presence of

B. P. Olson } As to S.W.D. Stanley W. Dahlmeier  
K. E. Merick }  
B. P. Olson } As to F.A.D. Frances A. Dahlmeier  
K. E. Merick }

STATE OF MINNESOTA } s.s.  
COUNTY OF ANOKA }  
On this 4th day of June 1948 A.D. before me, a Notary Public within and for said County and State personally appeared Stanley W. Dahlmeier and Frances A. Dahlmeier, his wife, to me personally known to be the persons described in and who executed the foregoing instrument and they affirm and acknowledge that they executed the same as their own free act and deed.

C. T. Olson  
Notary Public, Anoka County, Minnesota  
My Commission Expires Jan. 4, 1950.

I hereby certify that I have surveyed and platted the land described in the dedication on this sheet as DAHLMEIER ACRES; that this plat is a correct representation of said survey; that all distances are correctly shown on said plat in figures denoting feet and decimals of a foot; that the monuments for the guidance of future surveys have been correctly placed in the ground as shown on said plat; that the topography of the land is correctly shown on said plat; that the outside boundaries of the land are correctly designated as shown on said plat; and that there are no wet lands or public highways to be designated on said plat other than are shown thereon.

Francis Cartwright  
Registered Land Surveyor

STATE OF MINNESOTA } s.s.  
COUNTY OF HENNEPIN }  
Above certificate subscribed and sworn to before me, a Notary Public within and for said County and State on this 7th day of June 1948 A.D.

Henry W. Lauderdale  
Notary Public, Hennepin County, Minnesota  
My Commission Expires Aug. 14, 1949.

This plat was approved and accepted by the Honorable Board of County Commissioners of the County of Anoka, State of Minnesota, at a regular meeting held this 12th day of July 1948 A.D.

H. S. Stack  
Chairman, Board of County Commissioners  
Anoka County, Minnesota

E. G. Carlson  
County Auditor, Anoka County, Minnesota

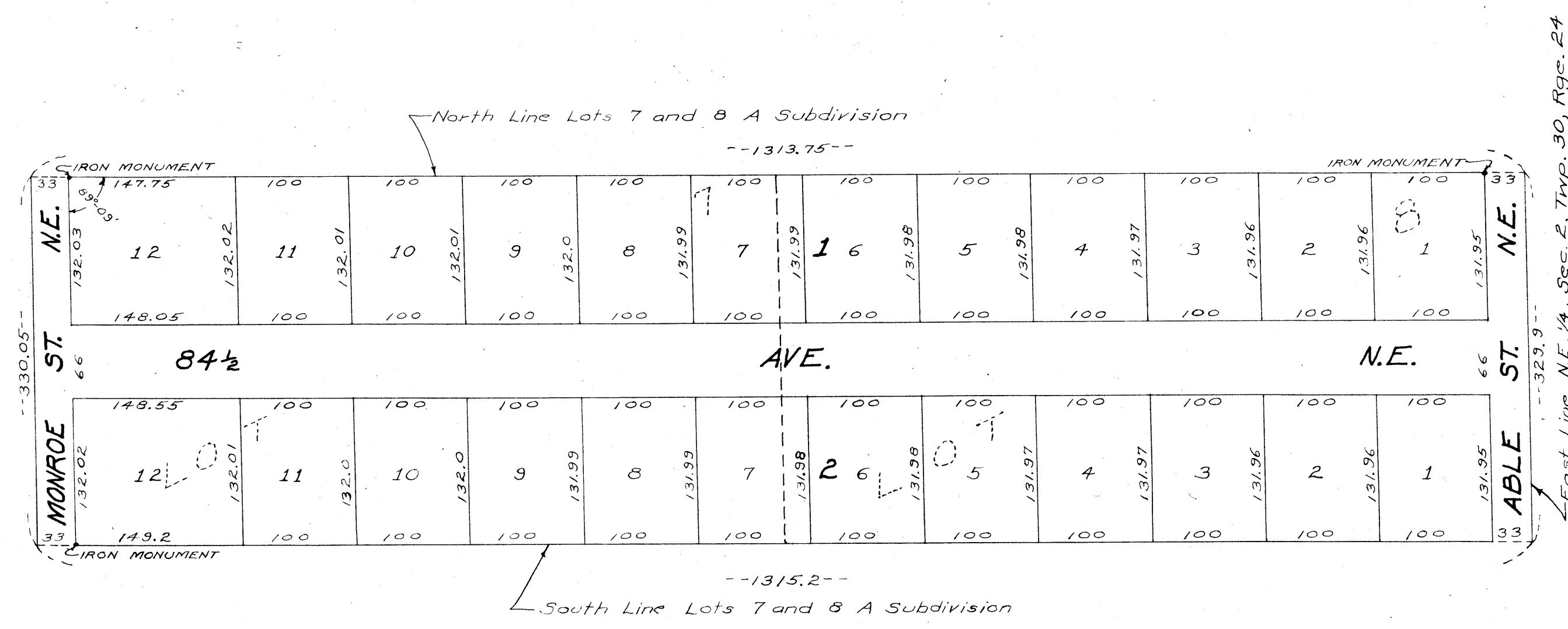
By J. Skinner Deputy

This plat was approved as to form and execution on this 10th day of July 1948 A.D.

Walter D. Bowser  
County Attorney, Anoka County, Minnesota

TAXES PAID  
This 13th day of July 1948  
E. G. Carlson  
Auditor, Anoka County, Minn.  
J. Skinner Deputy

I hereby certify that taxes for the year 1947  
on the lands described within are paid  
Walter D. Bowser  
County Treasurer  
By E. G. Carlson, Deputy



East Line N.E. 1/4, Sec. 2, Twp. 30, Rge. 24

SCALE: 1"=100'