

# DEACON'S POND 3RD ADDITION

KNOW ALL PERSONS BY THESE PRESENTS: That TJB Development Company, a Minnesota corporation, owner of the following described property:

Outlot A & B, DEACON'S POND 2ND ADDITION, Anoka County, Minnesota.

AND

Outlot C, DEACON'S POND, Anoka County, Minnesota.

Has caused the same to be surveyed and platted as DEACON'S POND 3RD ADDITION and does hereby dedicate to the public for public use the drainage and utility easements as shown on this plat.

In witness whereof said TJB Development Company, a Minnesota corporation, has caused these presents to be signed by its proper officer this 19<sup>th</sup> day of Sept 2013.

TJB DEVELOPMENT COMPANY  
[Signature]  
Thomas J. Budzynski, President

STATE OF MINNESOTA  
COUNTY OF Anoka

This instrument was acknowledged before me this 19<sup>th</sup> day of September, 2013, by Thomas J. Budzynski, President of TJB Development Company, a Minnesota corporation, on behalf of the corporation.

[Signature]  
Arlyn R. Kittelson  
Notary Public, Anoka, County, Minnesota  
My Commission Expires 1-31-2015

I Joshua P. Schneider do hereby certify that this plat was prepared by me or under my direct supervision; that I am a duly Licensed Land Surveyor in the State of Minnesota; that this plat is a correct representation of the boundary survey; that all mathematical data and labels are correctly designated on this plat; that all monuments depicted on this plat have been, or will be correctly set within one year; that all water boundaries and wet lands, as defined in Minnesota Statutes, Section 505.01, Subd. 3, as of the date of this certificate are shown and labeled on this plat, and all public ways are shown and labeled on this plat.

Dated this 19<sup>th</sup> day of September, 2013.

[Signature]  
Joshua P. Schneider, Licensed Land Surveyor  
Minnesota License Number 44655

STATE OF MINNESOTA  
COUNTY OF Anoka

This instrument was acknowledged before me this 19<sup>th</sup> day of September, 2013 by Joshua P. Schneider.

[Signature]  
Arlyn R. Kittelson  
Notary Public, Anoka, County, Minnesota  
My Commission Expires 1-31-2015

CITY COUNCIL, CITY OF BLAINE, MINNESOTA

This plat of DEACON'S POND 3RD ADDITION was approved and accepted by the City Council of the City of Blaine, Minnesota at a regular meeting thereof held this 11<sup>th</sup> day of July, 2013, and said plat is in compliance with the provisions of Minnesota Statutes, Section 505.03 Subd. 2.

CITY COUNCIL, CITY OF BLAINE, MINNESOTA

By: [Signature] Mayor

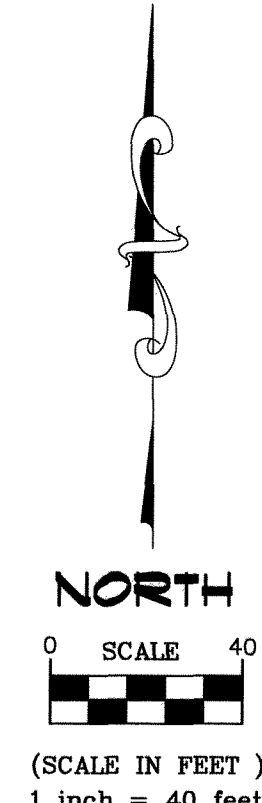
By: [Signature] Clerk

COUNTY SURVEYOR

I hereby certify that in accordance with Minnesota Statutes, Section 505.021, Subd. 11, this plat has been reviewed and approved this 25<sup>th</sup> day of SEPTEMBER 2013.

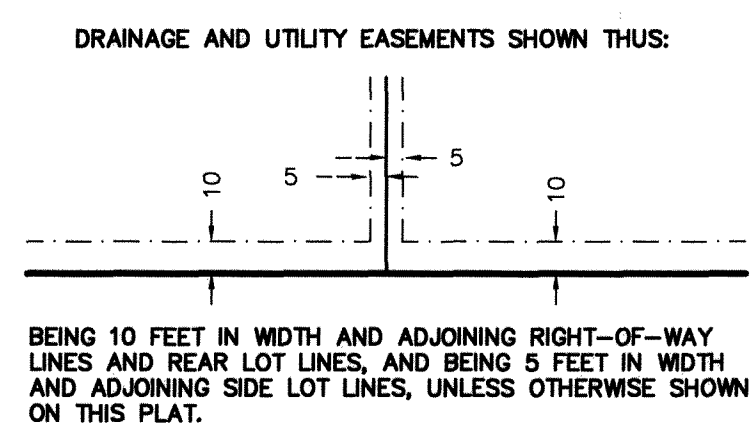
[Signature]  
Larry D. Holm  
Anoka County Surveyor

519126.001  
Office of RECORDER/REGISTRAR  
OF TITLES  
STATE OF MINNESOTA COUNTY OF ANOKA  
I hereby certify that the within instrument was filed in  
this office for record on the 25<sup>th</sup> day of  
Sept 2013 at 11:14 o'clock A.M.  
and was duly recorded in book 21 TORN'S  
Page 50  
[Signature]  
Jonell M. Sawyer  
Recorder/Registrar of Titles  
By: [Signature]  
J.M. Dischinger  
Deputy

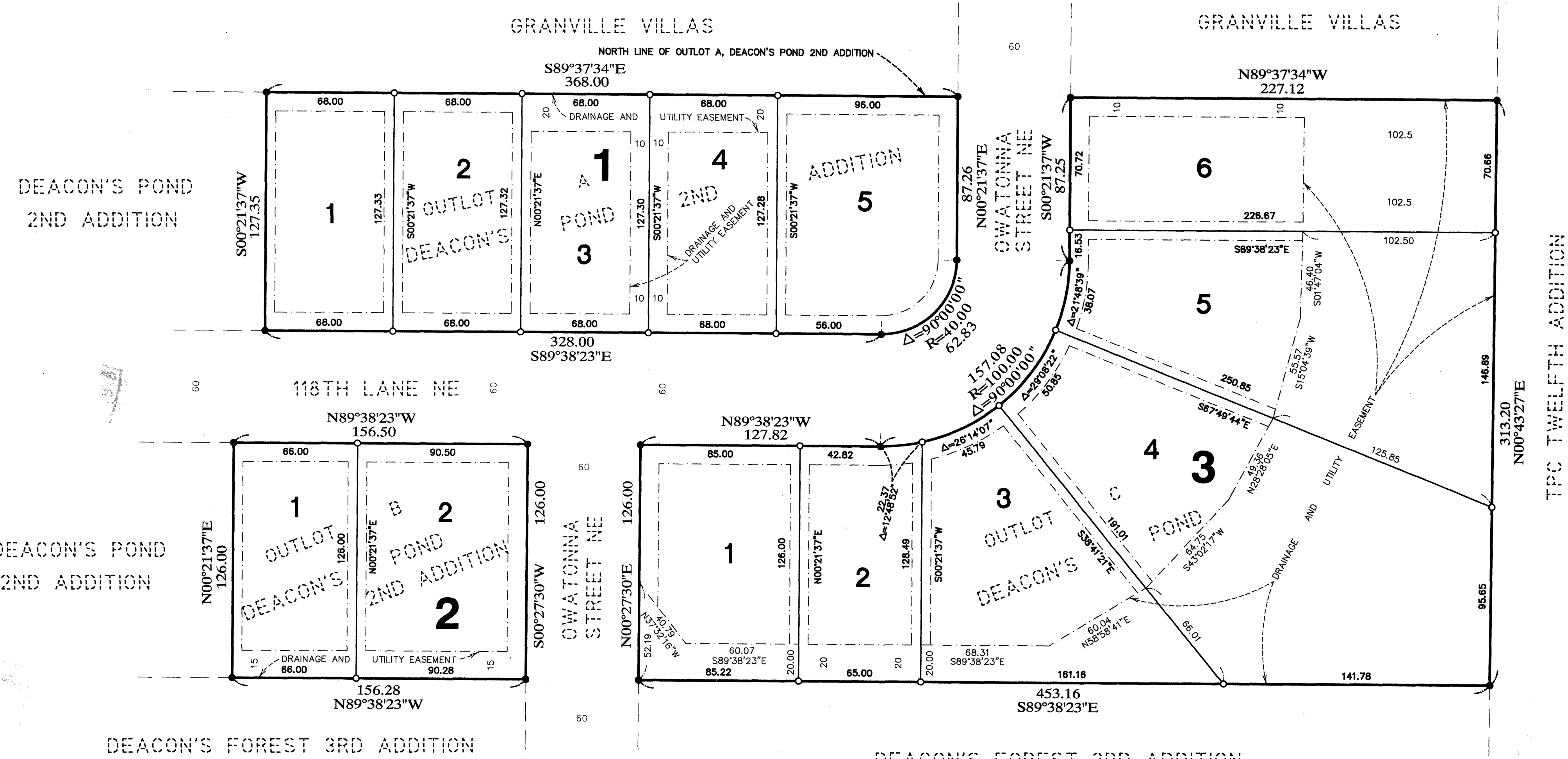


FOR THE PURPOSES OF THIS PLAT, THE NORTH LINE OF OUTLOT A, DEACON'S POND 2ND ADDITION, ANOKA COUNTY, MINNESOTA, IS ASSUMED TO BEAR S89°37'34"E.

I HEREBY CERTIFY THAT THE CURRENT AND DELINQUENT TAXES ON THE LANDS DESCRIBED WITHIN ARE PAID AND THE TRANSFER IS ENTERED  
Sept 13, 2013  
[Signature]  
Jonell M. Sawyer  
PROPERTY TAX ADMINISTRATOR  
BY: [Signature]  
J.M. Dischinger  
DEPUTY



BEING 10 FEET IN WIDTH AND ADJOINING RIGHT-OF-WAY LINES AND REAR LOT LINES, AND BEING 5 FEET IN WIDTH AND ADJOINING SIDE LOT LINES, UNLESS OTHERWISE SHOWN ON THIS PLAT.



● DENOTES FOUND MONUMENT.  
○ DENOTES 1/2 INCH IRON PIPE MARKED BY LICENSE NO. 44655.  
ALL MONUMENT REQUIRED BY MINNESOTA STATUTE WILL BE SET WITHIN ONE YEAR OF THE RECORDING DATE OF THIS PLAT, AND SHALL BE EVIDENCED BY A 1/2" INCH BY 14 INCH IRON PIPE MARKED BY RLS 44655.