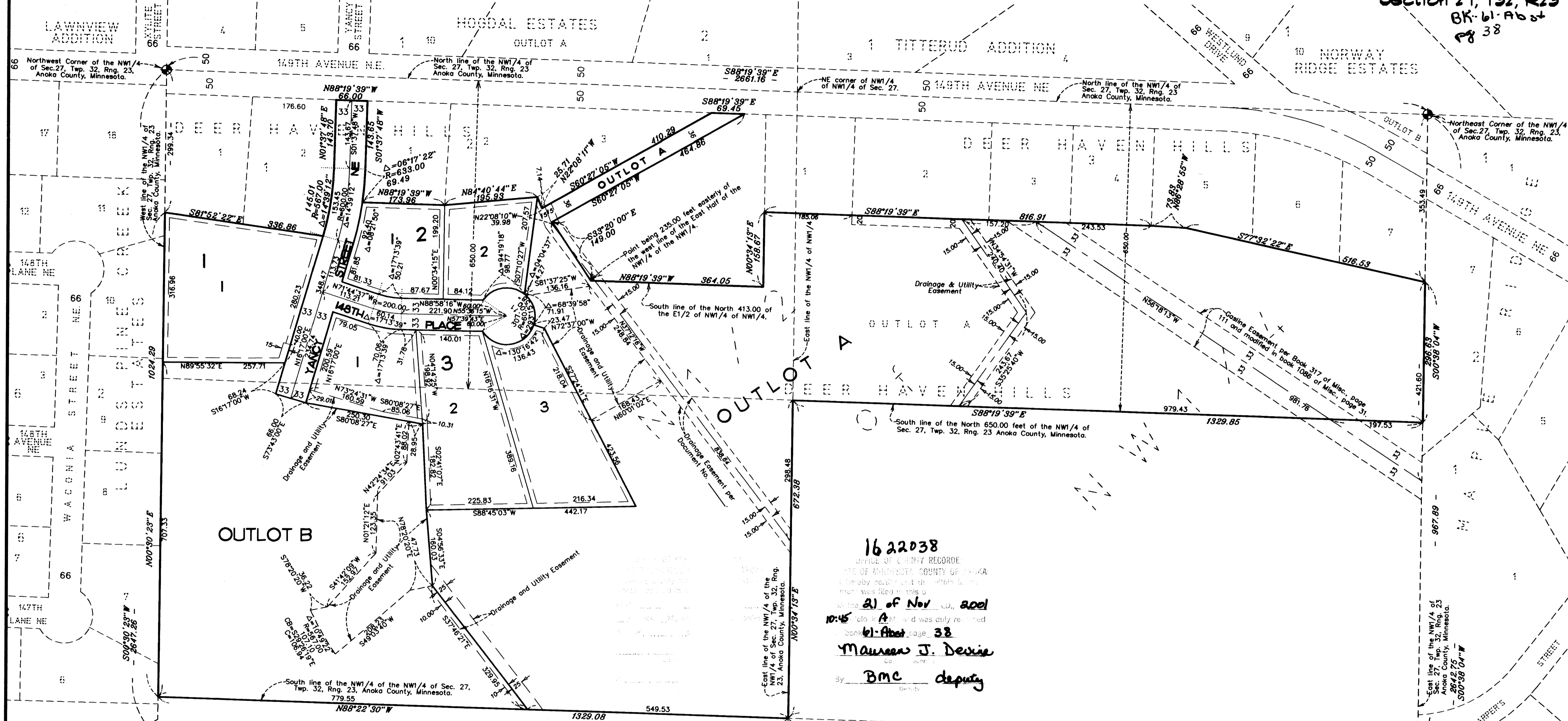


OFFICIAL PLAT DEER HAVEN HILLS SECOND ADDITION

City of Ham Lake
County of Anoka
Section 27, T32, R23
BK-61-A0 st
pg 38



1622038
OFFICE OF COUNTY RECORDER
STATE OF MINNESOTA, COUNTY OF ANOKA
I hereby certify that the following plat was filed in this office
on the 21st day of Nov 2001
at 10:45 A.M. and was duly recorded
in book 61-A0 page 38
Maurice J. Desie
By BMC deputy

KNOW ALL MEN BY THESE PRESENTS: That 2715 Incorporated, a Minnesota Corporation, owner of the following described property situated in the State of Minnesota, County of Anoka, to wit:

That part of the Northwest Quarter of the Northwest Quarter of Section 27, Township 32, Range 23, Anoka County, Minnesota, lying southerly of the North 650.00 feet thereof, and
and
Outlot A, DEER HAVEN HILLS, Anoka County, Minnesota, according to the recorded plat thereof.

Has caused the same to be surveyed and plotted as DEER HAVEN HILLS SECOND ADDITION and does hereby dedicate to the public for public use forever the street, place and drainage and utility easements as shown on this plat.

In witness whereof said 2715 Incorporated, a Minnesota corporation, has caused these presents to be signed by its proper officers this 19th day of July 2001.
2715 Incorporated
Gary A. Steen, President
Ann M. Steen, Secretary

STATE OF MINNESOTA
COUNTY OF ANOKA
The foregoing instrument was acknowledged before me this 19th day of July 2001, by Gary A. Steen, President and Ann M. Steen, Secretary of 2715 Incorporated, a Minnesota corporation on behalf of the corporation.

Gary A. Steen
Gary A. Steen, President
Ann M. Steen
Ann M. Steen, Secretary
L. Culver
L. Culver, Notary Public
My Commission Expires 1-31-2005

I hereby certify that I have surveyed and plotted the property described on this plat as DEER HAVEN HILLS SECOND ADDITION; that this plat is a correct representation of said survey; that all distances are correctly shown on the plat in feet and hundredths of a foot; that all monuments will be correctly placed in the ground as shown; that the outside boundary lines are correctly designated on said plat and that there are no wet lands as defined in Minnesota Statutes, Sec. 505.02 Subd. 1 or public highways to be designated other than as shown on said plat.

Ernest G. Rud
Ernest G. Rud, Land Surveyor
Minnesota Registration No. 9808

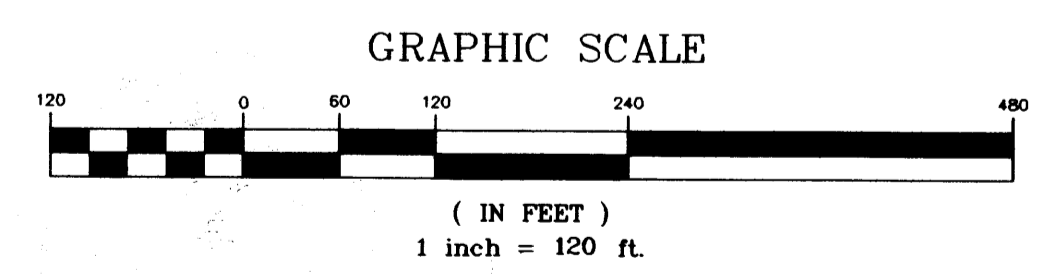
STATE OF MINNESOTA
COUNTY OF ANOKA
The foregoing Surveyor's Certificate was acknowledged before me this 10th day of July 2001, by Ernest G. Rud, Land Surveyor.

Cathleen R. Bruno
Cathleen R. Bruno, Notary Public
My Commission Expires January 31, 2005

This plat of DEER HAVEN HILLS SECOND ADDITION was approved by the City Council of Ham Lake, Minnesota at a regular meeting thereof held this 2nd day of July 2001, and if applicable, the written comments and recommendations of the Commissioner of Transportation and the County Highway Engineer have been received by the City or the prescribed 30 day period has elapsed without receipt of such comments and recommendations, as provided by Minnesota Statutes, Section 505.03, Subd. 2.

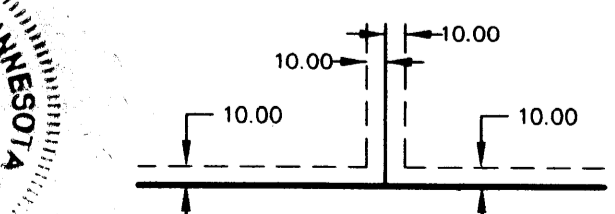
By *Larry D. Holler* Mayor
By *Claris A. Niska* Clerk
This plat has been checked and approved this 21st day of November 2001.

Larry D. Holler
Larry D. Holler, Anoka County Surveyor
Receipt No. 2001111385 \$ 335.00



For the purposes of this plat the North line of the Northwest Quarter of Section 27, Twp. 32, Rng. 23, Anoka County, Minnesota is assumed to have a bearing of S88°19'39"E.

DRAINAGE AND UTILITY EASEMENTS ARE SHOWN THUS:



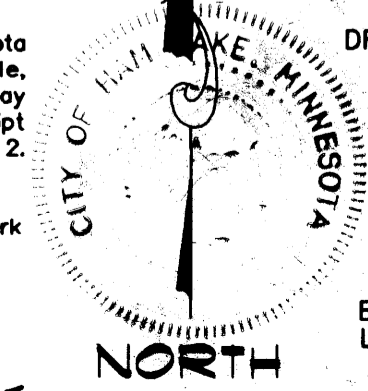
BEING 10 FEET IN WIDTH AND ADJOINING ALL LOT LINES UNLESS OTHERWISE SHOWN ON THIS PLAT.

Denotes Anoka County Monument
Denotes 1/2" Found Iron Monument

All monuments required by Minnesota Statute, and not shown on this plat, will be set within one year of the recording date of this plat, and shall be evidenced by a 1/2 inch by 18 inch iron pipe marked by RLS 9808.

THAT THE CURRENT AND...
Nov 21, 2001
L. Culver

DAWNETTE M. SHIMMER
NOTARY PUBLIC-MINNESOTA
MY COMMISSION EXPIRES 1-31-2005



E.G. RUD & SONS, INC.
LAND SURVEYORS