

# DEER HAVEN HILLS SEVENTH ADDITION

I HEREBY CERTIFY THAT THE CURRENT AND DELINQUENT TAXES ON THE LANDS DESCRIBED WITHIN ARE PAID AND THE TRANSFER IS ENTERED November 6, 2013  
*Janell M Sawyer*  
 PROPERTY TAX ADMINISTRATOR  
 BY *J. Patterson*  
 DEPUTY

City of Ham Lake  
 County of Anoka  
 Sec. 27, T32, R23  
 Book 76 Abstract Page 46

KNOW ALL PERSONS BY THESE PRESENTS: That 2715, Inc., a Minnesota corporation, owner of the following described property:

Outlot C, DEER HAVEN HILLS FOURTH ADDITION, Anoka County, Minnesota.

Has caused the same to be surveyed and platted as DEER HAVEN HILLS SEVENTH ADDITION and does hereby dedicate to the public for public use the public ways and the drainage and utility easements as shown by this plat.

In witness whereof said 2715, Inc., a Minnesota corporation, owner, has caused these presents to be signed by Gary A. Steen, as President and Ann M. Steen, as Secretary this 29 day of October, 2013.

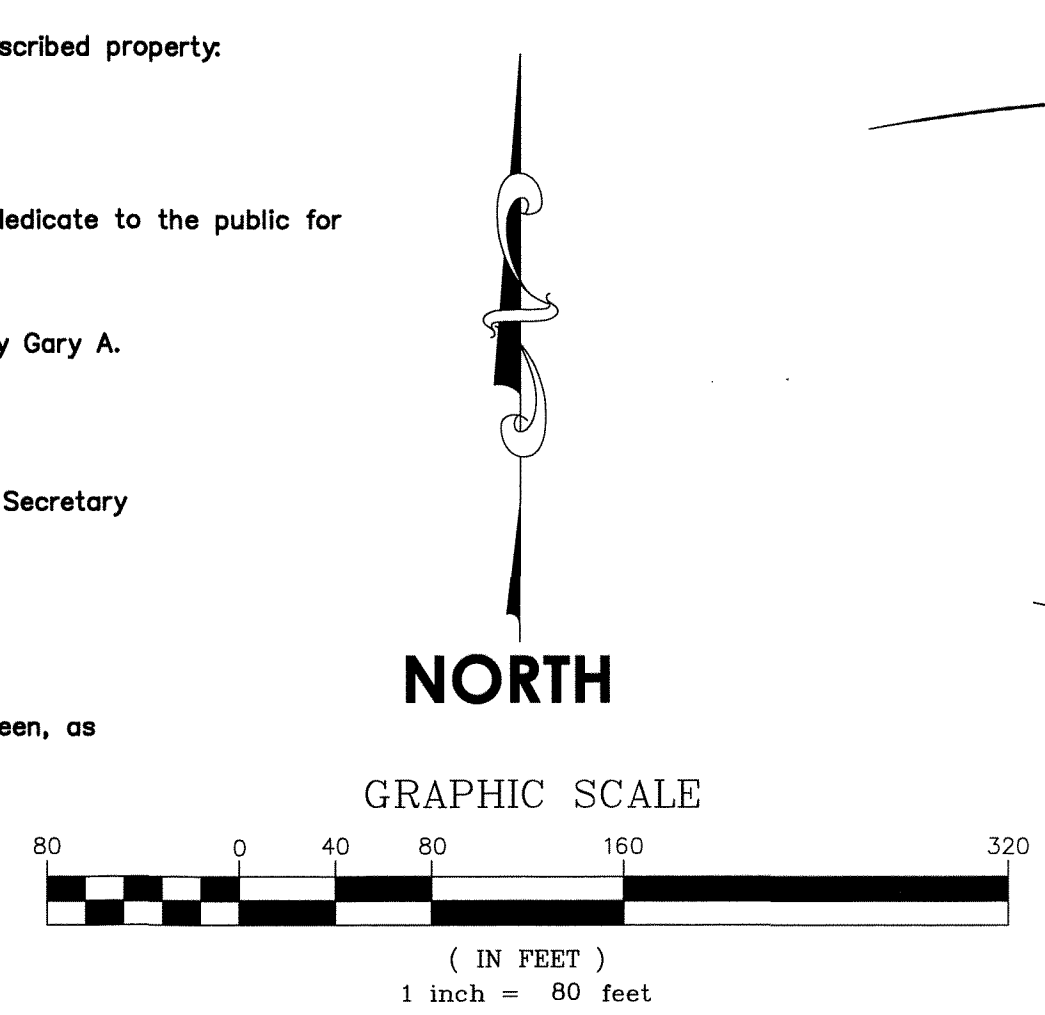
2715 INC.

*Gary A. Steen*, as President  
 Gary A. Steen  
*Ann M. Steen*, as Secretary  
 Ann M. Steen

STATE OF MINNESOTA  
 COUNTY OF Anoka

This instrument was acknowledged before me this 29 day of October, 2013 by Gary A. Steen, as President and Ann M. Steen, as Secretary of 2715, Inc., a Minnesota corporation.

*Nicole A. Johnson*  
 Nicole A. Johnson  
 Notary Public, Anoka County, Minnesota  
 My Commission Expires Jan 31, 2015



I Jason E. Rud do hereby certify that this plat was prepared by me or under my direct supervision; that I am a duly Licensed Land Surveyor in the State of Minnesota; that this plat is a correct representation of the boundary survey; that all mathematical data and labels are correctly designated on this plat; that all monuments depicted on this plat have been, or will be correctly set within one year; that all water boundaries and wet lands, as defined in Minnesota Statutes, Section 505.01, Subd. 3, as of the date of this certificate are shown and labeled on this plat; and all public ways are shown and labeled on this plat.

Dated this 15 day of October, 2013.

*Jason E. Rud*  
 Jason E. Rud, Licensed Land Surveyor  
 Minnesota License No. 41578

STATE OF MINNESOTA  
 COUNTY OF Anoka

This instrument was acknowledged before me this 15 day of October, 2013 by Jason E. Rud.

*Nicole A. Johnson*  
 Nicole A. Johnson  
 Notary Public, Anoka County, Minnesota  
 My Commission Expires Jan 31, 2015

2072493.002  
 Office of RECORDER/REGISTRAR  
 OF TITLES  
 STATE OF MINNESOTA COUNTY OF ANOKA  
 I hereby certify that the within instrument was filed in this office for record on the 15 day of November, 2013 at 14:55 o'clock P.M. and was duly recorded in book 76 page 46 Abstract  
*Janell M Sawyer*  
 Recorder/Registrar of Titles  
 By *Jap*  
 Deputy

City Council, City of Ham Lake, Minnesota

This plat of DEER HAVEN HILLS SEVENTH ADDITION was approved and accepted by the City Council of the City of Ham Lake, Minnesota at a regular meeting thereof held this 3rd day of September, 2013, and said plat is in compliance with the provisions of Minnesota Statutes, Section 505.03, Subd. 2.

City Council, City of Ham Lake, Minnesota

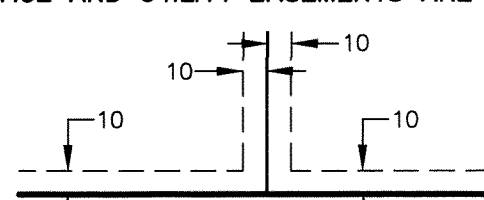
By *Michael J. Vukobratovic* Mayor  
 By *Demetrius* Clerk

County Surveyor

I hereby certify that in accordance with Minnesota Statutes, Section 505.021, Subd. 11, this plat has been reviewed and approved this 6 day of November, 2013.

*Larry D. Holum*  
 Larry D. Holum  
 Anoka County Surveyor

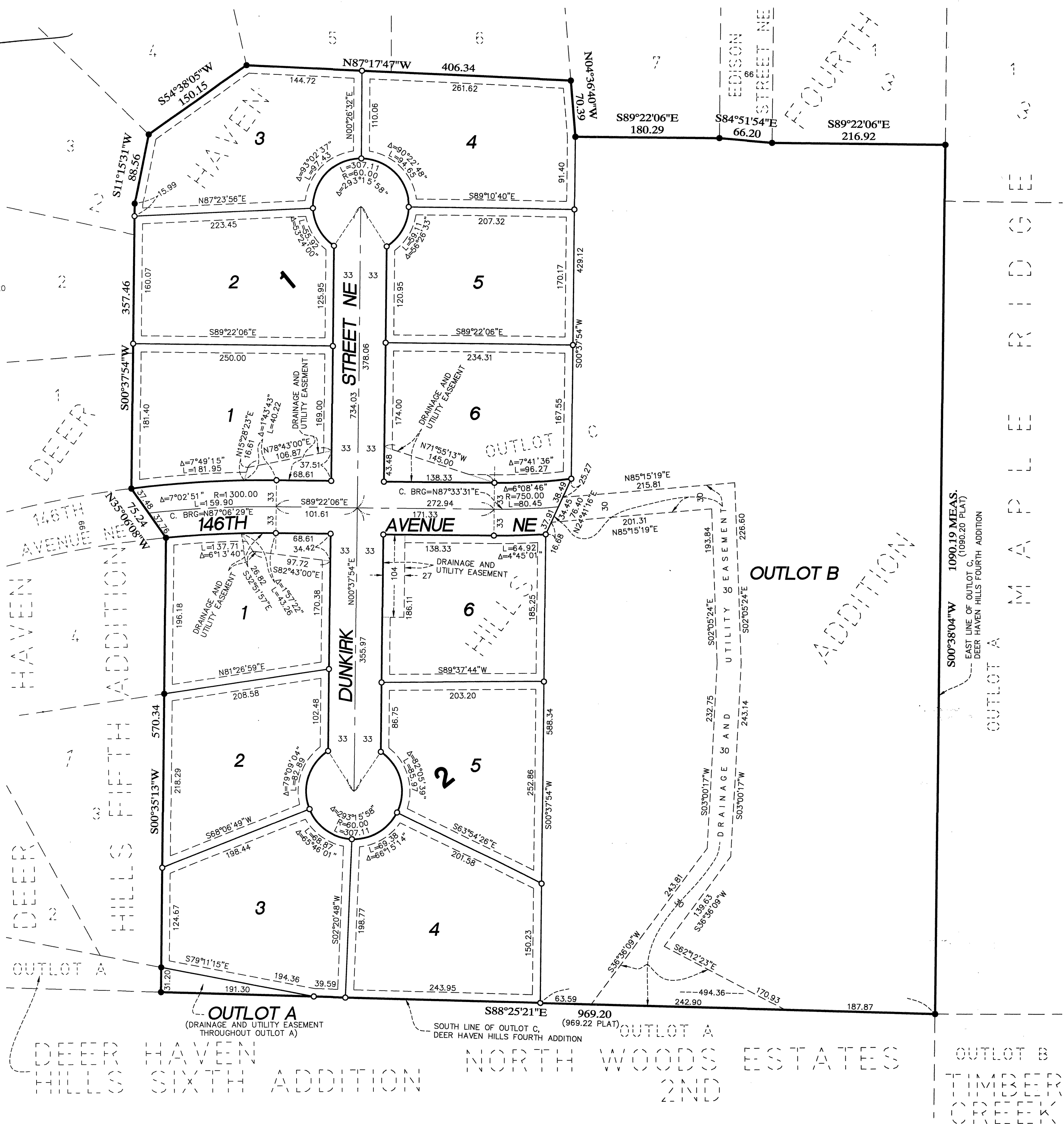
DRAINAGE AND UTILITY EASEMENTS ARE SHOWN THUS:



BEING 10 FEET IN WIDTH AND ADJOINING ALL LOT LINES UNLESS OTHERWISE SHOWN ON THIS PLAT.

- DENOTES FOUND IRON MONUMENT MARKED BY RLS NO. 41578.
- DENOTES SET 1/2 INCH BY 14 INCH IRON PIPE MARKED BY RLS NO. 41578.
- (XXX.XX PLAT) DENOTES DIMENSION SHOWN ON THE PLAT OF DEER HAVEN HILLS FOURTH ADDITION.

FOR THE PURPOSES OF THIS PLAT THE EAST LINE OF OUTLOT C, DEER HAVEN HILLS FOURTH ADDITION IS ASSUMED TO HAVE A BEARING OF SOUTH 00 DEGREES 38 MINUTES 04 SECONDS WEST.



1090.19 MEAS.  
 EAST LINE OF OUTLOT C,  
 DEER HAVEN HILLS FOURTH ADDITION

OUTLOT B  
 TIMBER  
 CREEK

\$56.00