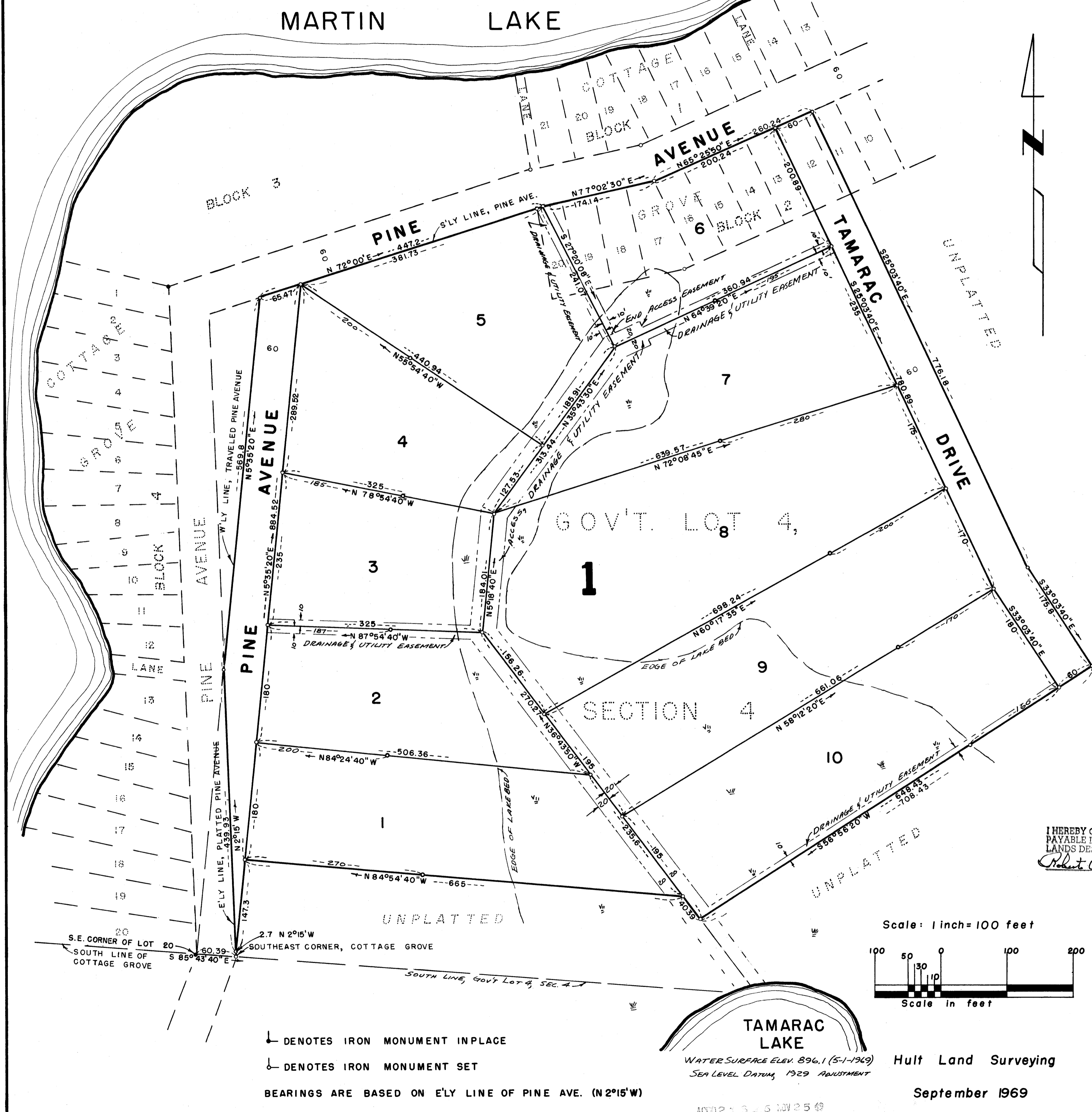


# DEER RUN

LINWOOD TWP., ANOKA CO., MINNESOTA  
PART OF GOV'T LOT 4, SEC. 4, T 33 N, R 22 W  
AND INCLUDING PART OF BLOCK 2, COTTAGE GROVE



THIS IS TO CERTIFY that Curtis Lendt and Ruby M. Lendt, husband and wife, owners of the following described property situated in Linwood Township, Anoka County, Minnesota:

That part of Government Lot 4 of Section 4, Township 33 North, Range 22 West, and including Lots 12 through 20 inclusive and part of Lot 11, Block 2 of the recorded plat of COTTAGE GROVE, all in Anoka County, Minnesota, described as follows:

Commencing at the southeast corner of Lot 20, Block 4 of the recorded plat of Cottage Grove, Anoka County, Minnesota; thence South 85 degrees 43 minutes 40 seconds East, assumed bearing, along the south line of Cottage Grove, a distance of 60.39 feet to the Southeast corner of Cottage Grove; thence North 2 degrees 15 minutes West, along the easterly line of Pine Avenue as dedicated in said plat, a distance of 2.7 feet to the point of beginning; thence continuing North 2 degrees 15 minutes West along said easterly street line, a distance of 439.93 feet to the point of intersection with the westerly line of Pine Avenue as constructed and traveled; thence North 5 degrees 35 minutes 20 seconds East, along said westerly line of Pine Avenue as traveled, a distance of 569.8 feet to the point of intersection thereof with the southerly line of platted Pine Avenue; thence northeasterly, along said southerly line of Pine Avenue on the following described courses; North 72 degrees 00 minutes East, a distance of 447.2 feet; thence North 77 degrees 02 minutes 30 seconds East, a distance of 174.14 feet; thence North 65 degrees 25 minutes 50 seconds East, a distance of 260.24 feet; thence South 25 degrees 03 minutes 40 seconds East, leaving the southerly line of platted Pine Avenue, a distance of 776.18 feet; thence South 33 degrees 03 minutes 40 seconds East, a distance of 175.8 feet; thence South 56 degrees 56 minutes 20 seconds West, a distance of 708.43 feet; thence North 36 degrees 43 minutes 50 seconds West, a distance of 40.39 feet; thence North 84 degrees 54 minutes 40 seconds West, a distance of 665 feet; thence South 5 degrees 35 minutes 20 seconds West, a distance of 147.3 feet to the point of beginning, containing 25.6 acres, more or less.

HEREBY CERTIFY that they have caused the same to be surveyed and platted as DEER RUN, and do hereby donate and dedicate to the public for public use forever, Pine Avenue, Tamarac Drive, and the utility, drainage and/or access easements as shown on the plat.

IN WITNESS WHEREOF: We have hereunto set our hands and seal this 2nd day of October, 1969.

Signed: Curtis Lendt In the presence of:  
Curtis Lendt  
Ruby M. Lendt Ruby M. Lendt  
W. M. Miner witness  
Arno J. Shoguit witness



STATE OF MINNESOTA }  
COUNTY OF Chisago } SS On this 2nd day of Oct., 1969, before me, a Notary Public within and for said county and state, personally appeared Curtis Lendt and Ruby M. Lendt, to me known to be the persons described herein and who executed the foregoing instrument and acknowledge that they executed the same as their own free act and deed.

Arno J. Shoguit (Vernon Shoguit)  
Notary Public, Chisago County, Minnesota  
My Commission Expires Feb. 16, 1975

I, Don C. Hult, hereby certify that I have surveyed and platted the land described in the dedication on this sheet as DEER RUN; that this plat is a correct representation of said survey; that all courses, distances, and bearings are correctly shown on the plat; that the outside boundaries are correctly designated; that the monuments for the guidance of future surveys have been correctly placed in the ground at all lot corners; and that there are no wet lands, easements or public highways to be designated on the plat other than as shown thereon.

Don C. Hult  
Don C. Hult, Minnesota Registered Land Surveyor  
Registration No. 6617

STATE OF MINNESOTA }  
COUNTY OF Chisago } SS

The above certificate subscribed and sworn to before me, a Notary Public, within and for said County and State on this 2nd day of OCTOBER, 1969.

Don E. Hansen  
Notary Public, Chisago County, Minnesota  
My Commission expires Dec. 7, 1972

The annexed plat of DEER RUN was approved by the Town Board of the Township of Linwood at a meeting held this 27th day of Sept., 1969.

Frank Gabrielick Chairman of Town Board  
Arno J. Shoguit Clerk of Town Board

Checked and approved this 14th day of October, 1969

Ronald W. Anderson  
Anoka County Surveyor

Recommended for approval this 14th day of Oct., 1969.

E. J. Lundheim  
Anoka County Highway Engineer

This plat was approved as to form and execution on this 2nd day of Nov, 1969.

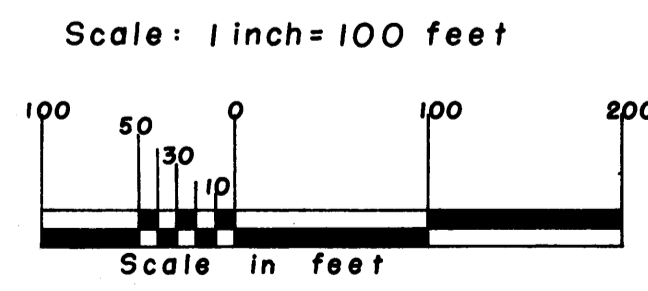
Robert W. Johnson  
Anoka County Attorney

This plat was approved and accepted by the Board of County Commissioners of the County of Anoka, State of Minnesota, at a meeting held this 1st day of October, 1969.

Ray Peterson Chairman  
Kenneth W. Campbell County Auditor

I HEREBY CERTIFY THAT THE TAXES PAYABLE IN THE YEAR 1969 ON THE LANDS DESCRIBED WITHIN ARE PAID  
Robert W. Johnson  
Anoka County Treasurer

TAXES PAID  
This 25 day of Nov 1969  
Kenneth W. Campbell  
Auditor, Anoka County, Minn.  
By Harold J. ... Deputy



329802

OFFICE OF REGISTER OF DEEDS  
STATE OF MINNESOTA, COUNTY OF ANOKA } SS

I hereby certify that the within instrument was filed in this office for record on the 25th day of Nov, A.D., 1969, at 4:40 o'clock P.M., and was duly recorded in book 4 of Platte page 12.

Ted J. Orndahl  
Register of Deeds  
By Margaret Russell Deputy

TAMARAC LAKE  
WATER SURFACE ELEV. 896.1 (5-1-1969)  
SEA LEVEL DATUM, 1929 ADJUSTMENT

Hult Land Surveying  
September 1969

⊥ DENOTES IRON MONUMENT IN PLACE  
⊙ DENOTES IRON MONUMENT SET  
BEARINGS ARE BASED ON E'LY LINE OF PINE AVE. (N 2°15'W)