

DIEHL ACRES

Book 77 of Abstract Page 3
CITY OF RAMSEY
COUNTY OF ANOKA
SEC. 2 & 3, T. 32, R. 25

KNOW ALL PERSONS BY THESE PRESENTS: That Samuel W. Diehl and Andrea L. Diehl, husband and wife, owners of the following described property:

Lot 4, Block 1, VALLEY VIEW ACRES, Anoka County, Minnesota.

Have caused the same to be surveyed and platted as DIEHL ACRES and do hereby dedicate to the public for public use the drainage and utility easements as created by this plat. Also dedicating to the County of Anoka the right of access onto County Road No. 63 as shown on this plat.

In witness whereof said Samuel W. Diehl and Andrea L. Diehl, husband and wife, have hereunto set their hands this 20th day of DEC., 2013.

Samuel W. Diehl
Samuel W. Diehl
Andrea L. Diehl
Andrea L. Diehl

STATE OF MINNESOTA
COUNTY OF ANOKA

This instrument was acknowledged before me on Dec. 30, 2013, by Samuel W. Diehl and Andrea L. Diehl, husband and wife.

Tim M. Gladhill
TIM M. GLADHILL
Notary Public, ANOKA County, Minnesota
My commission expires JAN. 31, 2019

I Charles E. Webb Jr. do hereby certify that this plat was prepared by me or under my direct supervision; that I am a duly Licensed Land Surveyor in the State of Minnesota; that this plat is a correct representation of the boundary survey; that all mathematical data and labels are correctly designated on this plat; that all monuments depicted on this plat have been, or will be correctly set within one year; that all water boundaries and wet lands, as defined in Minnesota Statutes, Section 505.01, Subd. 3, as of the date of this certificate are shown and labeled on this plat; and all public ways are shown and labeled on this plat.

Charles E. Webb Jr.
Charles E. Webb Jr., Licensed Land Surveyor
Minnesota License Number 41226

STATE OF MINNESOTA
COUNTY OF WRIGHT

This instrument was acknowledged before me on Dec. 27, 2013, by Charles E. Webb Jr.,

Heidi L. Wurm
Heidi L. Wurm
Notary Public, Wright County, Minnesota
My commission expires Jan. 31, 2018

CITY COUNCIL, CITY OF RAMSEY, MINNESOTA

This plat of DIEHL ACRES was approved and accepted by the City Council of the City of Ramsey, Minnesota at a regular meeting thereof held this 26 day of NOVEMBER, 2013, and said plat is in compliance with the provisions of Minnesota Statutes, Section 505.03, Subd. 2.

CITY COUNCIL, CITY OF RAMSEY, MINNESOTA
Saul St. Mayor
Ann M. Whitley Clerk

COUNTY SURVEYOR

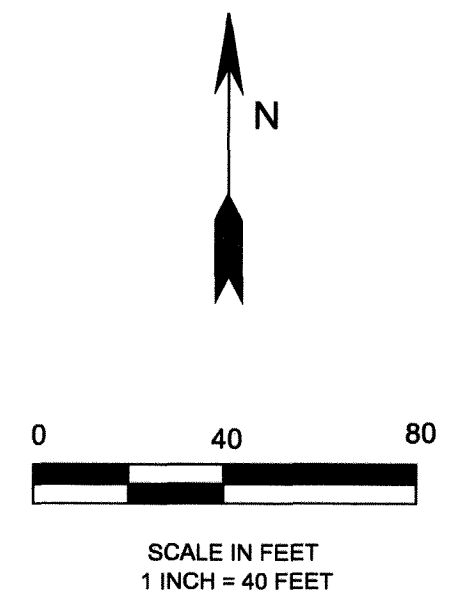
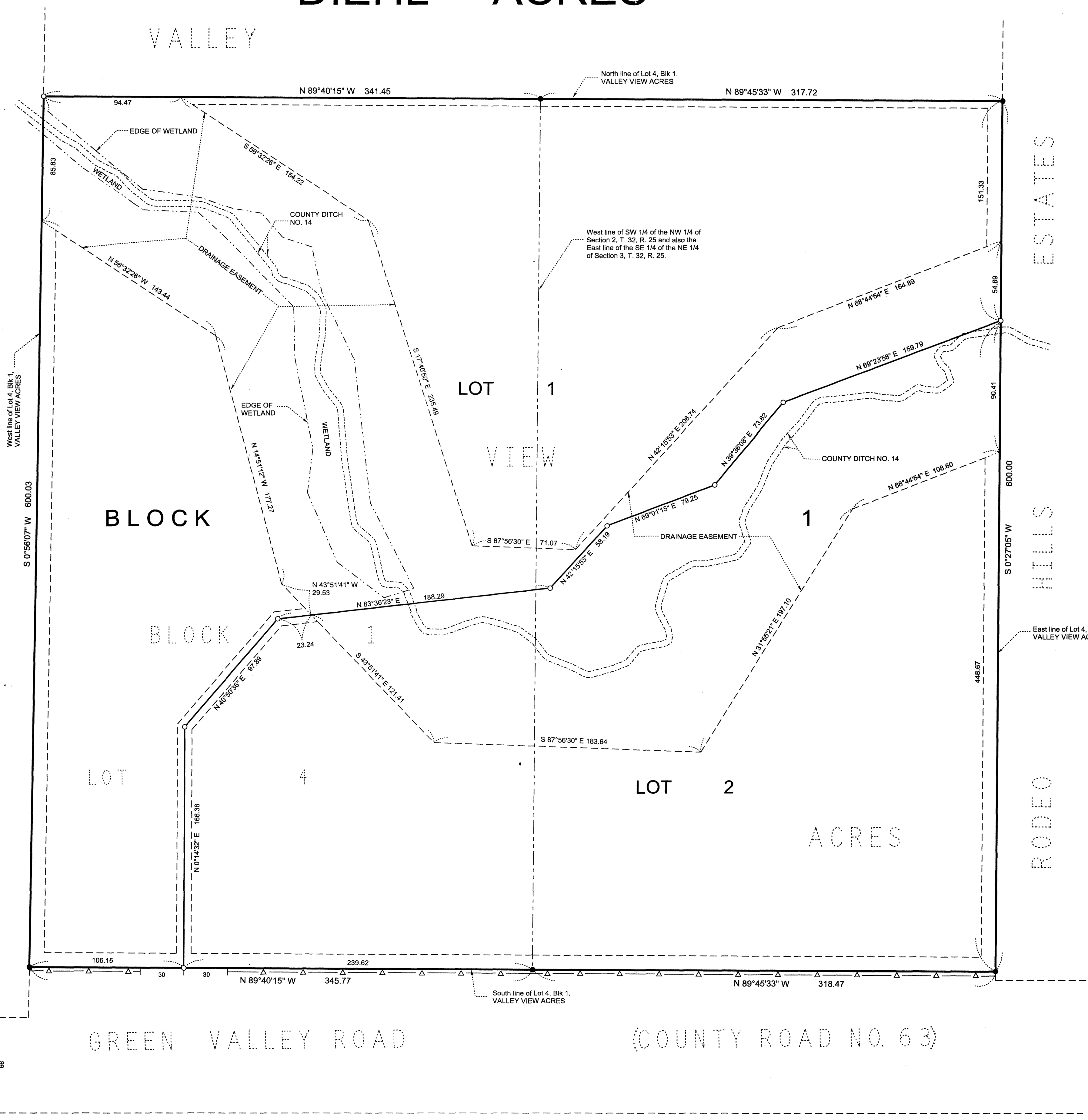
I hereby certify that in accordance with Minnesota Statutes, Section 505.021, Subd. 11, this plat has been reviewed and approved this 31st day of DECEMBER, 2013.

2075441.001
Larry D. Holdm.
Larry D. Holdm, Anoka County Surveyor

Office of RECORDER/REGISTRAR
OF TITLES
STATE OF MINNESOTA COUNTY OF ANOKA

I hereby certify that the within instrument was filed in this office for record on the 31st day of December, 2013 at 11:37 o'clock A.M. and was duly recorded in book 77 page 3
Jonell M. Sawyer
Jonell M. Sawyer
Recorder/Registrar of Titles

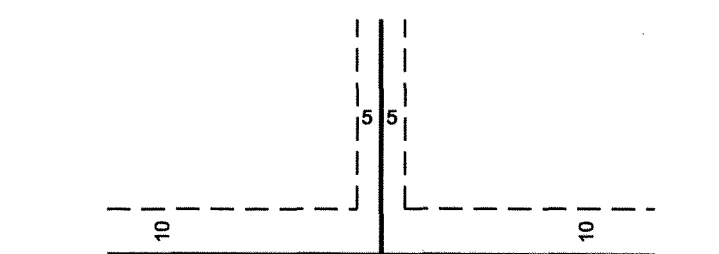
By *Jap*
Deputy



FOR THE PURPOSES OF THIS PLAT, THE EAST LINE OF VALLEY VIEW ACRES IS ASSUMED TO HAVE A BEARING OF SOUTH 0 DEGREES 27 MINUTES 05 SECONDS WEST

- DENOTES IRON PIPE MONUMENT FOUND
- DENOTES 1/2 INCH BY 14 INCH IRON PIPE MONUMENT SET AND MARKED MINNESOTA LICENSE NO. 41226
- △— DENOTES RIGHT OF ACCESS DEDICATED TO THE COUNTY OF ANOKA
- - - - DENOTES EDGE OF WETLAND DELINEATED BY SVOBODA ECOLOGICAL RESOURCES, DATED OCTOBER 17, 2013

DRAINAGE AND UTILITY EASEMENTS ARE SHOWN THUS:



BEING 5 FEET IN WIDTH AND ADJOINING SIDE AND REAR LOT LINES, ALSO BEING 10 FEET IN WIDTH AND ADJOINING RIGHT-OF-WAY LINES, UNLESS OTHERWISE SHOWN ON THIS PLAT.

I HEREBY CERTIFY THAT THE CURRENT AND DELINQUENT TAXES ON THE LANDS DESCRIBED WITHIN ARE PAID AND THE TRANSFER IS ENTERED December 31, 2013
Jonell M. Sawyer
PROPERTY TAX ADMINISTRATOR
BY *Hattison*
DEPUTY

WEBB SURVEYING, LLC
PROFESSIONAL LAND SURVEYORS

\$56.00