

DONNA FARMS

KNOW ALL PERSONS BY THESE PRESENTS: That Donna Farms, LLC, a Minnesota limited liability company, owner of the following described property:

Outlot B, RIVERSTONE SOUTH, according to the recorded plat thereof, Anoka County, Minnesota.

Has caused the same to be surveyed and platted as DONNA FARMS and does hereby dedicate to the public for public use the drainage and utility easements as shown on this plat.

In witness whereof said Donna Farms, LLC, a Minnesota limited liability company, has caused these presents to be signed by its proper officer this 26 day of September, 2024

DONNA FARMS, LLC

Steven M. Jung
Steven M. Jung, President

STATE OF Minnesota
COUNTY OF Anoka

This instrument was acknowledged before me on September 26, 2024 by Steven M. Jung, President of Donna Farms, LLC, a Minnesota limited liability company, on behalf of the company.

Nicole M. Blas (Signed)
Nicole M. Blas (Printed)
Notary Public, Anoka County, Minnesota
My commission expires January 31, 2027

I Jason E. Rud do hereby certify that this plat was prepared by me or under my direct supervision; that I am a duly Licensed Land Surveyor in the State of Minnesota; that this plat is a correct representation of the boundary survey; that all mathematical data and labels are correctly designated on this plat; that all monuments depicted on this plat have been, or will be correctly set within one year; that all water boundaries and wet lands, as defined in Minnesota Statutes, Section 505.01, Subd. 3, as of the date of this certificate are shown and labeled on this plat; and all public ways are shown and labeled on this plat.

Dated this 25th day of SEPTEMBER, 2024.

Jason E. Rud
Jason E. Rud, Licensed Land Surveyor
Minnesota License No. 41578

STATE OF Minnesota
COUNTY OF Anoka

This instrument was acknowledged before me on September 25th, 2024 by Jason E. Rud.

Lahe Mack (Signed)
Lahe Mack (Printed)
Notary Public, Anoka County, Minnesota
My commission expires January 31, 2027

CITY COUNCIL, CITY OF RAMSEY, MINNESOTA

This plat of DONNA FARMS was approved and accepted by the City Council of the City of Ramsey, Minnesota at a regular meeting thereof held this 24th day of SEPTEMBER, 2024 and said plat is in compliance with the provisions of Minnesota Statutes, Section 505.03, Subd. 2.

CITY COUNCIL, CITY OF RAMSEY, MINNESOTA

By: Mark Elgen, Mayor

By: Kathleen, Clerk

COUNTY SURVEYOR

I hereby certify that in accordance with Minnesota Statutes, Section 505.021, Subd. 11, this plat has been reviewed and approved this 15th day of October, 2024

By: David M. Ziegler
David M. Ziegler
Anoka County Surveyor

COUNTY AUDITOR/TREASURER

Pursuant to Minnesota Statutes, Section 505.021, Subd. 9, taxes payable in the year 2024 on the land hereinbefore described have been paid. Also, pursuant to Minnesota Statutes, Section 272.12, there are no delinquent taxes and transfer entered this 15 day of October, 2024

Pamela J. LeBlanc
Property Tax Administrator

By: D. Stefan, Deputy

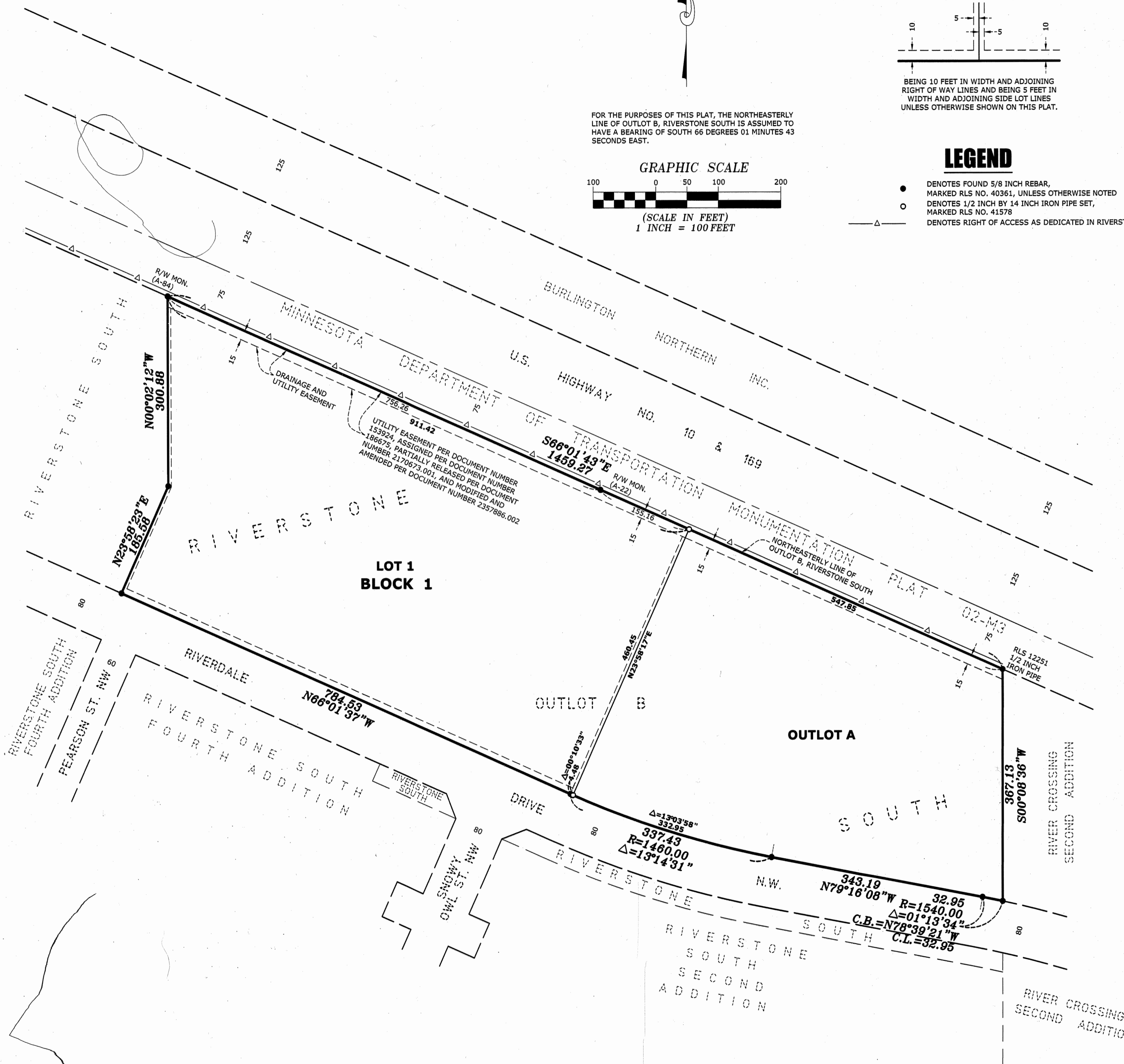
COUNTY RECORDER/REGISTRAR OF TITLES

County of Anoka, State of Minnesota

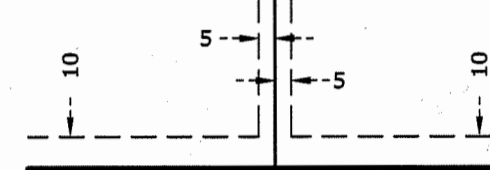
I hereby certify that this plat of DONNA FARMS was filed in the office of the County Recorder/Registrar of Titles for public record on this 15 day of October, 2024 at 10:35 o'clock A.M. and was duly recorded as Document Number 2424367.001

Pamela J. LeBlanc
County Recorder/Registrar of Titles

By: D. Stefan, Deputy

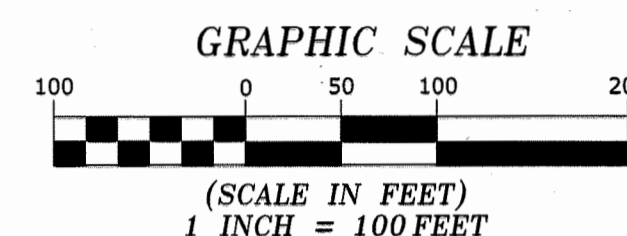


DRAINAGE AND UTILITY EASEMENTS ARE SHOWN THUS: (NOT TO SCALE)



BEING 10 FEET IN WIDTH AND ADJOINING RIGHT OF WAY LINES AND BEING 5 FEET IN WIDTH AND ADJOINING SIDE LOT LINES UNLESS OTHERWISE SHOWN ON THIS PLAT.

FOR THE PURPOSES OF THIS PLAT, THE NORTHEASTERLY LINE OF OUTLOT B, RIVERSTONE SOUTH IS ASSUMED TO HAVE A BEARING OF SOUTH 66 DEGREES 01 MINUTES 43 SECONDS EAST.



LEGEND

- DENOTES FOUND 5/8 INCH REBAR, MARKED RLS NO. 40361, UNLESS OTHERWISE NOTED
- DENOTES 1/2 INCH BY 14 INCH IRON PIPE SET, MARKED RLS NO. 41578
- △ DENOTES RIGHT OF ACCESS AS DEDICATED IN RIVERSTONE SOUTH

\$56