

KNOW ALL MEN BY THESE PRESENTS: that Land E Properties, Inc., a Minnesota Corporation, owners and proprietors of the following described property situate in the State of Minnesota and County of Anoka, to-wit: All that part of the West 1/2 of the SE 1/4 of Section 18 - Township 31, Range 23, lying East of Donnay's Oak Park 10th, and do hereby donate and dedicate to the public for public use forever the Streets, Avenues, Lane and Outlots as shown on the annexed plat, subject to the Utility and Drainage Easements as shown on the annexed plat. In witness whereof said Land E Properties, Inc. has caused these presents to be signed by its proper officers and its Corporate Seal to be hereunto affixed this 23 day of August A.D. 1962.

In Presence of
 Roland W. Waller, Notary Public, Hennepin County, Minnesota.
 Arthur C. Kutschka, Jr., Secretary of Land E Properties, Inc.
 L. A. Donnay, President of Land E Properties, Inc.
 Geraldine D. Donnay, Secretary of Land E Properties, Inc.

We hereby certify that the Village Council of the Village of Blaine, Anoka County, Minnesota, duly accepted and approved the annexed plat of DONNAY'S OAK PARK 11th at a regular meeting thereof held this 24th day of August A.D. 1962.

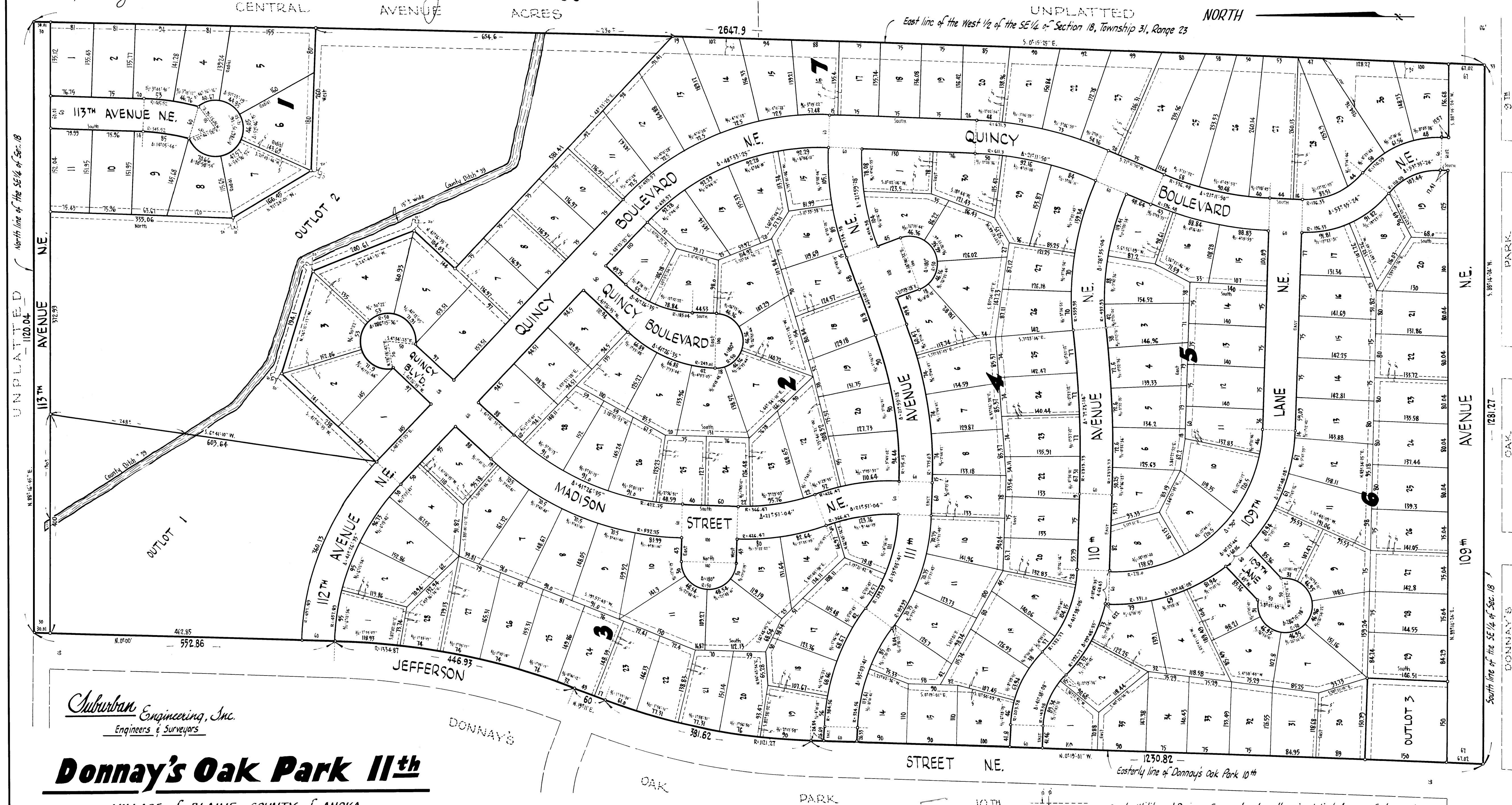
On this 23 day of August A.D. 1962, before me, a Notary Public, within and for said County, an State, personally appeared L.A. Donnay and Geraldine D. Donnay, to me personally known, who being by me duly sworn, did say that they are the President and Secretary, respectively of Land E Properties, Inc., the corporation named in the foregoing instrument, that the seal affixed to said instrument is the corporate seal of said corporation, and that said instrument was signed and sealed in behalf of said corporation by authority of its Board of Directors and said L.A. Donnay and Geraldine D. Donnay acknowledged said instrument to be the free act and deed of said corporation.

I hereby certify that I have surveyed and plotted the land described in the dedication on this plat as DONNAY'S OAK PARK 11th, that this plat is a correct representation of said survey, that all distances are correctly shown on the plat in figures denoting feet and decimals of a foot; that the monuments for the guidance of future surveys have been correctly placed in the ground as shown on the annexed plat; that the outside boundaries of the land are correctly designated on said plat, and that there are no met lands or public highways to be designated on said plat other than as shown thereon.

VILLAGE of BLAINE, ANOKA COUNTY, MINNESOTA
 Checked and approved by me, this 17th day of September A.D. 1962.
 by Fred Bernsten Mayor
 by Jerome A. Hoff Clerk

Notary Public, Hennepin County, Minnesota.
 My Commission Expires April 3, 1969.
 ROLLAND W. WALLER

OFFICE OF REGISTER OF DEEDS
 STATE OF MINNESOTA, COUNTY OF ANOKA
 TAXES PAID
 I HEREBY CERTIFY THAT TAXES FOR THE YEAR 1961 ON THE LANDS DESCRIBED WITHIN ARE PAID
 This 18th day of August 1962
 I hereby certify that the within instrument was filed in this office for record on SEP 19 1962 at 11 o'clock A.M., and was duly recorded in Plat Book 27 of Plate page 41
 Carl J. Peterson, County Treasurer
 Helene Skinner, Register of Deeds
 My Commission Expires July 19, 1967



Suburban Engineering, Inc.
 Engineers & Surveyors
Donnay's Oak Park 11th
 VILLAGE of BLAINE, COUNTY of ANOKA

Denotes Iron Monument Bearings are assumed
 Denotes Utility and Drainage Easement, unless other wise indicated
 Scale 1"=100'

For Surveyor's Certificate of Correction, to the plat of Donnay's Oak Park 11th, See Book 594, Page 86, Doc. #246465.