

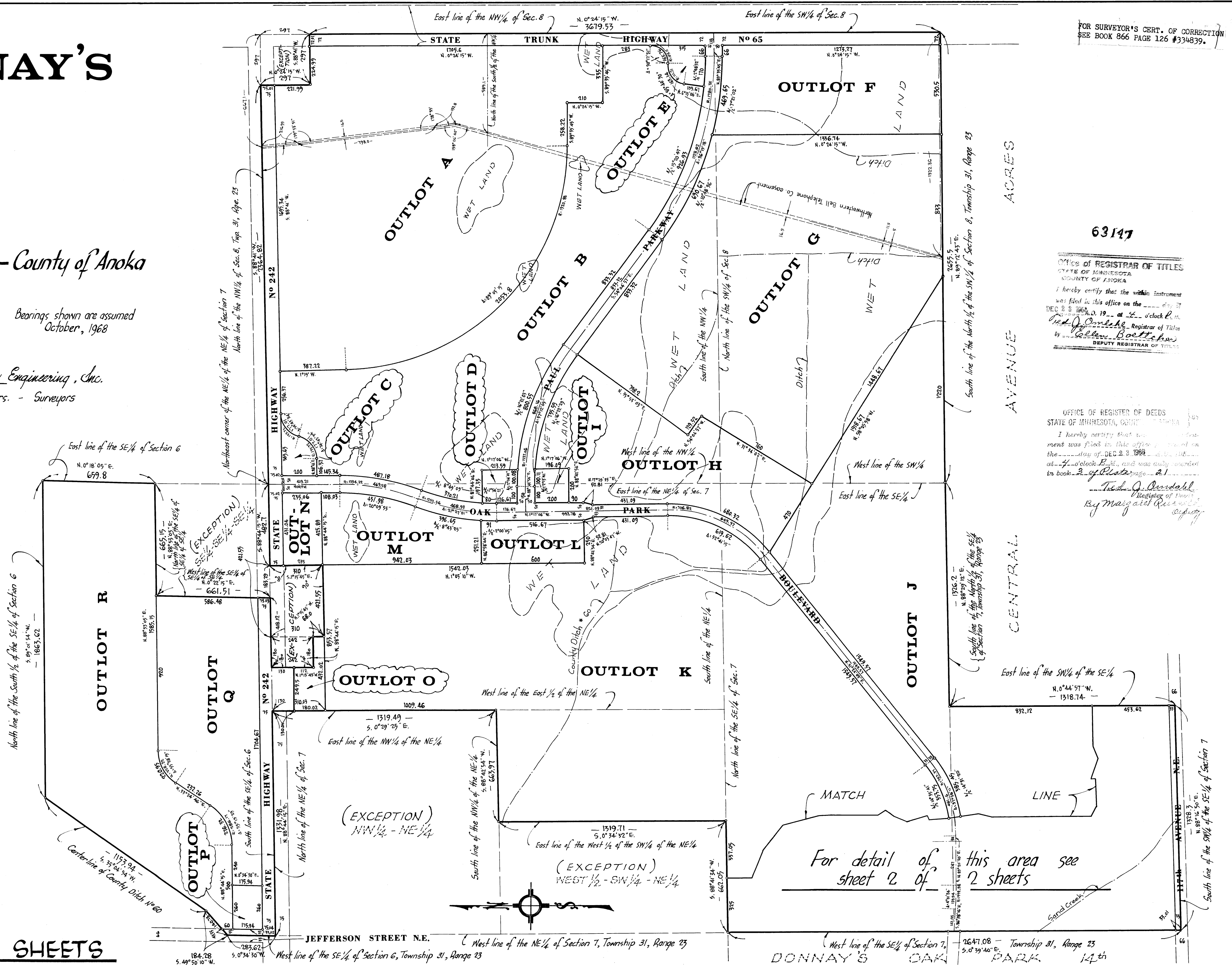
DONNAY'S OAK PARK 15th

City of Blaine - County of Anoka

Scale 1 inch = 300 feet
• Denotes Iron Monument

Bearings shown are assumed
October, 1968

- Surveyed by -
Suburban Engineering, Inc.
Engineers - Surveyors



63147

OFFICE OF REGISTRAR OF TITLES
STATE OF MINNESOTA
COUNTY OF ANOKA

I hereby certify that the within instrument was filed in this office on the 19th day of DEC 23 1968 at 4 o'clock P.M.

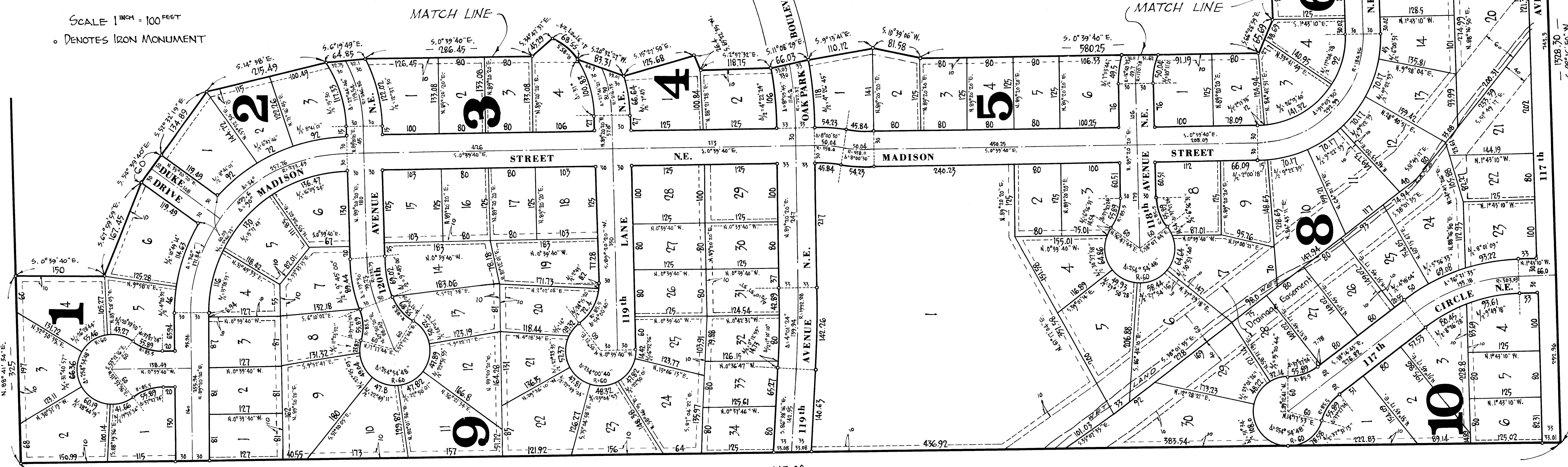
Neil J. Omulek, Registrar of Titles
Walter Boettcher, DEPUTY REGISTRAR OF TITLES

OFFICE OF REGISTER OF DEEDS
STATE OF MINNESOTA, COUNTY OF ANOKA

I hereby certify that the within instrument was filed in this office on the 19th day of DEC 23 1968 at 4 o'clock P.M. and was duly recorded in book 2 of Plate page 2.

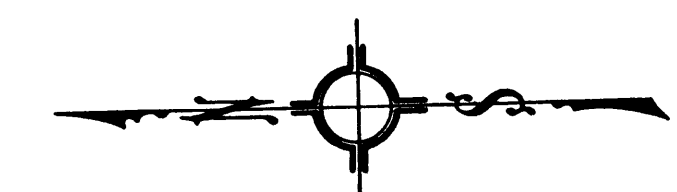
Ted A. Orendahl, Register of Deeds
By Margaret R. ...

DONNAY'S OAK PARK 15th



SCALE 1" = 100 FEET
 • DENOTES IRON MONUMENT

Surveyed by
Suburban Engineering, Inc.
 Engineers - Surveyors



Dashed lines denote Utility and Drainage easements being 5 feet in width and parallel with the lot line unless otherwise shown.

KNOW ALL MEN BY THESE PRESENTS: That Land & Properties, Inc., a Minnesota Corporation, owner and proprietor of the following described property situate in the State of Minnesota and County of Anoka, to-wit: The South 1/2 of the SE 1/4 of Section 6 except the SE 1/4 of the SE 1/4, also except that part of said South 1/2 of the SE 1/4 that lies northwesterly of County Ditch No. 60; The NE 1/4 of Section 7 except the West 1/4 of the NE 1/4, also except the NW 1/4 of the NE 1/4, also except that part of said NE 1/4 described as beginning at a point on the North line of said NE 1/4 distant 482.7 feet west of the Northeast corner thereof; thence West along said North line a distance of 421.55 feet; thence South at right angles to said North line a distance of 310 feet; thence East parallel with said North line a distance of said NE 1/4 described as beginning at a point on the North line of said NE 1/4 distant 904.25 feet west of the Northeast corner thereof; thence West along said North line a distance of 180 feet; thence South at right angles to said North line a distance of 242 feet; thence East parallel with said North line a distance of 180 feet; thence North to the point of beginning; The North 1/2 of the SW 1/4 of Section 8; The NW 1/4 of Section 8 except the North 297 feet of the East 297 feet of said Range 23; has caused the same to be surveyed and platted as DONNAY'S OAK PARK 15th and do hereby donate and dedicate to the public for public use forever the Highways, Parkway, Boulevard, Streets, Avenues, Drive, Lane, Circle, Utility and Drainage Easements; The Northwestern Bell Telephone Company Easement and also the Properties, Inc. has caused these presents to be signed by its proper officers and its Corporate Seal to be hereunto affixed this 5 day of Sept. A.D. 1968.

In Presence of
 As to L.A.
 Donmay and
 H.B. Strong
 Pres.
 Sec.
 M.D. 1968,
 before me, a Notary Public, within and for said County and State, personally appeared L.A. Donmay and H.B. Strong, to me personally known, who being by me duly sworn, did say that they are the President and Secretary, respectively of Land & Properties, Inc., the corporation named in the foregoing instrument; that the seal affixed to said instrument is the corporate seal of said corporation and that said instrument was signed and sealed in behalf of said corporation by authority of its Board of Directors and said L.A. Donmay and H.B. Strong acknowledged said instrument to be the free act and deed of said corporation.
 My Commission Expires July 12, 1974

Robert H. Tully
 Notary Public, Hennepin County, Minnesota
 My Commission Expires June 3, 1970

E. G. Rathbun
 Surveyor - Minnesota Registration No. 3795
 The surveyors certificate subscribed and sworn to before me, a Notary Public, this 27th day of September, A.D. 1968.

MAUREN D. OLSON
 Notary Public, Hennepin County, Minnesota
 My Commission Expires July 12, 1974

We hereby certify that the City Council of the City of Blaine, Anoka County, Minnesota, duly accepted and approved the annexed plat of DONNAY'S OAK PARK 15th at a regular meeting thereof held this 5 day of Sept. 1968 A.D.
 CITY OF BLAINE, ANOKA COUNTY, MINNESOTA
 By M. E. Bensch
 Mayor
 By R. A. K...
 Manager

Checked and approved this 23rd day of December A.D. 1968.
 Roland W. Erdman
 Anoka County Surveyor

TAXES PAID
 This 2nd day of Dec 1968
 Kenneth Campbell
 Auditor, Anoka County, Minn.
 May Beaudoin
 Deputy

WE HEREBY CERTIFY THAT THE TAXES DUE ON THIS PLAT FOR THE YEARS 1968 ON THE HANDS DESIGNATED HEREIN ARE PAID
 Robert O. Johnson
 Anoka County Treasurer