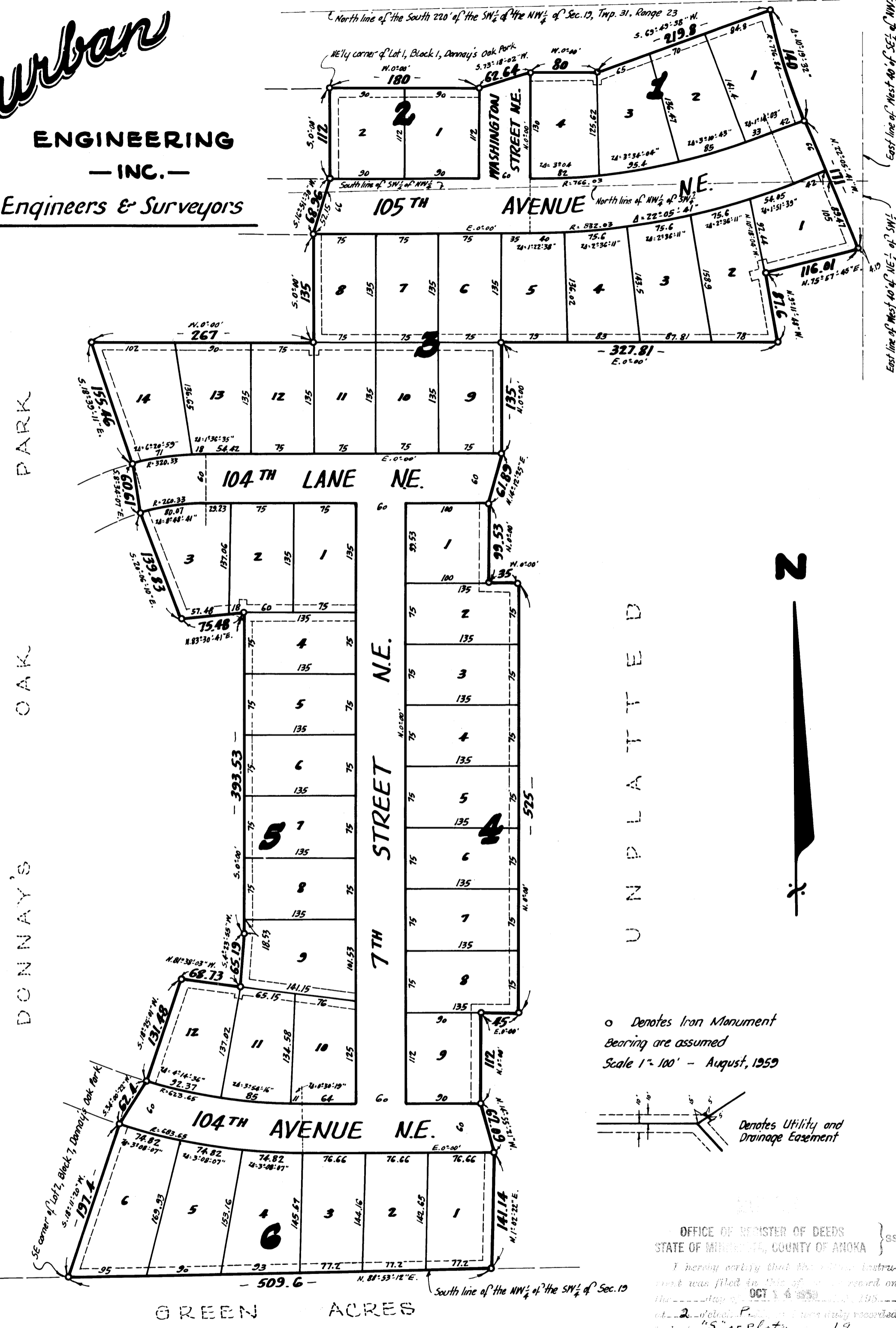


Suburban
ENGINEERING
— INC. —
Engineers & Surveyors



Donnay's Oak Park 2nd Addition

— VILLAGE of BLAINE — COUNTY of ANOKA —

KNOW ALL MEN BY THESE PRESENTS: that Land & Properties, Inc. a Minnesota Corporation, owners and proprietors of the following described property situate in the State of Minnesota and County of Anoka, to-wit: That part of the NW 1/4 of the SW 1/4, the West 40 feet of the NE 1/4 of the SW 1/4, the South 220 feet of the West 40 feet of the SE 1/4 of the NW 1/4, and the South 220 feet of the SW 1/4 of the NW 1/4 all in Section 19, Township 31, Range 23 described as beginning at the southeast corner of Lot 2, Block 7, Donnay's Oak Park, said corner being on the south line of said NW 1/4 of the SW 1/4; thence North 88° 53' 12" East (said bearing is assumed) along said south line distance of 509.6 feet; thence North 1° 02' 22" East a distance of 141.14 feet; thence North 14° 55' 21" West a distance of 62.09 feet; thence North 0° 00' a distance of 112 feet; thence East 0° 00' a distance of 45 feet; thence North 0° 00' a distance of 525 feet; thence West 0° 00' a distance of 35 feet; thence North 0° 00' a distance of 29.53 feet; thence North 14° 12' 25" East a distance of 61.89 feet; thence North 0° 00' a distance of 135 feet; thence East 0° 00' a distance of 327.81 feet; thence North 9° 11' 48" West a distance of 87.6 feet; thence North 75° 57' 45" East a distance of 116.01 feet; thence North 22° 05' 41" West a distance of 171 feet; thence on a tangential curve to the right with a radius of 776.84 feet for a distance of 140 feet; thence South 63° 49' 38" West a distance of 219.8 feet; thence West 0° 00' a distance of 80 feet; thence South 73° 18' 02" West a distance of 62.64 feet; thence westerly a distance of 180 feet more or less to the northeasterly corner of Lot 1, Block 1 of Donnay's Oak Park; thence southerly, easterly and westerly along the easterly line of said Donnay's Oak Park to the point of beginning; have caused the same to be surveyed and platted as DONNAY'S OAK PARK 2ND ADDITION, and do hereby donate and dedicate to the public for public use forever the Lane, Streets and Avenues as shown on the annexed plat, subject to the Utility and Drainage Easements as shown on the annexed plat for the use of municipality or other public utilities. In witness whereof said Land & Properties, Inc. has caused these presents to be signed by its proper officers and its Corporate Seal to be hereunto affixed this 11 day of SEPTEMBER A.D. 1959.

In Presence of: Roland W. Waller } As to L.A. Donnay and Geraldine D. Donnay
LAND & PROPERTIES, INC.
L.A. Donnay President
Geraldine D. Donnay Secretary

State of Minnesota } s.s. On this 11th day of SEPTEMBER A.D. 1959, before me a Notary Public within and for said County and State, personally appeared L.A. Donnay and Geraldine D. Donnay, to me personally known, who being by me duly sworn, did say that they are the President and Secretary respectively of Land & Properties, Inc. the corporation named in the foregoing instrument, that the seal affixed to said instrument is the corporate seal of said corporation, and that said instrument was signed and sealed in behalf of said corporation by authority of its Board of Directors, and said L.A. Donnay and Geraldine D. Donnay acknowledged said instrument to be the free act and deed of said corporation.
Roland W. Waller
Notary Public, Hennepin County, Minnesota
My Commission Expires April 3, 1960

I hereby certify that I have surveyed and platted the land described in the dedication on this plat as DONNAY'S OAK PARK 2ND ADDITION, that this plat is a correct representation of said survey; that all distances are correctly shown on said plat in figures denoting feet and decimals of a foot; that the monuments for the guidance of future surveys have been correctly placed in the ground as shown on said plat; that the topography of the land is correctly shown on said plat, that the outside boundaries of the land are correctly designated on said plat, and that there are no wet lands or public highways to be designated on said plat other than are shown thereon.
E.A. Rathbun
Surveyor - Minnesota Registration N° 3795

State of Minnesota } s.s. Above certificate subscribed and sworn to before me, a Notary Public within and for said County and State, on this 21st day of August A.D. 1959.
Suzanne Miskowic
Notary Public, Anoka County, Minnesota
My Commission Expires Dec. 26, 1964

We hereby certify that the Village Council of the Village of Blaine, Anoka County, Minnesota, duly accepted and approved the annexed plat of DONNAY'S OAK PARK 2ND ADDITION at a regular meeting thereof held this 27th day of October A.D. 1959.

VILLAGE of BLAINE, ANOKA COUNTY, MINNESOTA
Checked and approved by me this 9th day of October A.D. 1959.
Roland W. Anderson
Anoka County Surveyor
by Ed Bernsten Mayor
by Lee D. Bluff Clerk

OFFICE OF REGISTER OF DEEDS
STATE OF MINNESOTA, COUNTY OF ANOKA

I hereby certify that the foregoing instrument was filed for record on OCT 4 1959 at 1:55 P.M. in Book 55, p. 17.

Hertrude Kinnick
Register of Deeds
By Margaret O'Connell Deputy

HEREBY CERTIFY THAT TAXES FOR THE YEAR 1958 ON THE LANDS DESCRIBED WITHIN ARE PAID
Walter D. Bauers
County Treasurer
By P. Peterson, Deputy

TAXES PAID
12th Oct 59
Kenneth D. Campbell
Robert Peterson