

# Donnay's Oak Park 6th

- Village of Blaine - County of Anoka -

**Suburban Engineering, Inc.**  
— Engineers & Surveyors —

OFFICE OF REGISTER OF DEEDS  
STATE OF MINNESOTA, COUNTY OF ANOKA

I hereby certify that the within instrument was filed in this office for record on the day of DEC 1960 A.D., at 11:34 o'clock A.M., and was duly recorded in book 21 of Plate page 7.

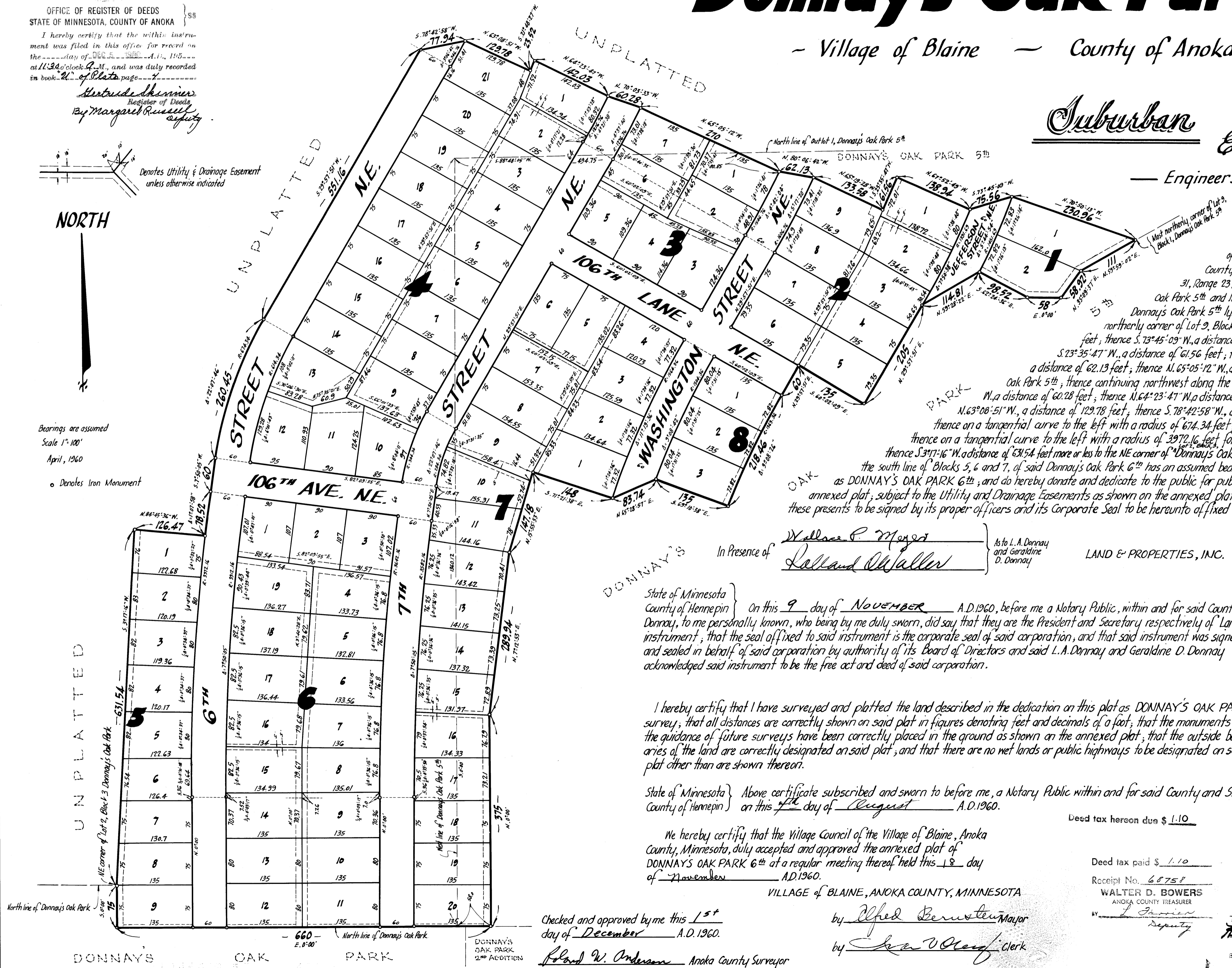
*Hertrude Scherer*  
Register of Deeds  
By *Margaret Russell* Deputy



NORTH

Bearings are assumed  
Scale 1"=100'  
April, 1960

o Denotes Iron Monument



KNOW ALL MEN BY THESE PRESENTS: that Land & Properties, Inc. a Minnesota Corporation, owners and proprietor of the following described property situate in the State of Minnesota and County of Anoka, to-wit: All that portion of the NW 1/4 of Section 19, Township 31, Range 23, lying north of Donnay's Oak Park, lying west and north of Donnay's Oak Park 5th and lying southerly and easterly of a line to be described, and that part of Donnay's Oak Park 5th lying southerly of the following described line, beginning at the most northerly corner of Lot 9, Block 1, Donnay's Oak Park 5th; thence N. 70° 50' 13" W., a distance of 230.96 feet; thence S. 73° 45' 09" W., a distance of 75.56 feet; thence N. 61° 52' 49" W., a distance of 138.94 feet; thence S. 23° 35' 47" W., a distance of 61.56 feet; thence N. 65° 19' 28" W., a distance of 133.58 feet; thence N. 80° 06' 42" W., a distance of 62.13 feet; thence N. 65° 05' 12" W., a distance of 80.85 feet more or less to the north line of Outlot 1, Donnay's Oak Park 5th; thence continuing northwest along the last described bearing for a distance of 189.15 feet; thence N. 70° 03' 33" W., a distance of 60.28 feet; thence N. 64° 23' 47" W., a distance of 142.03 feet; thence S. 21° 48' 27" W., a distance of 23.52 feet; thence N. 63° 08' 51" W., a distance of 129.78 feet; thence S. 78° 42' 58" W., a distance of 77.94 feet; thence S. 29° 57' 51" W., a distance of 551.16 feet; thence on a tangential curve to the left with a radius of 674.34 feet, a distance of 260.45 feet; thence S. 7° 50' 05" W., a distance of 60 feet; thence on a tangential curve to the left with a radius of 3972.16 feet, a distance of 785.2 feet; thence N. 84° 45' 36" W., a distance of 126.47 feet; thence S. 37° 16" W., a distance of 631.54 feet more or less to the NE corner of Donnay's Oak Park and there terminating; for the purpose of this description the south line of Blocks 6, 7, and 8, of said Donnay's Oak Park 6th has an assumed bearing of W. 0° 00'; have caused the same to be surveyed and platted as DONNAY'S OAK PARK 6th; and do hereby donate and dedicate to the public for public use forever the Streets, Avenue and Lane as shown on the annexed plat; subject to the Utility and Drainage Easements as shown on the annexed plat. In witness whereof said Land & Properties, Inc. has caused these presents to be signed by its proper officers and its Corporate Seal to be hereunto affixed this 9 day of NOVEMBER A.D. 1960.

In Presence of *Wallace P. Meyer* As to L. A. Donnay and Geraldine D. Donnay  
*Leland Waller* LAND & PROPERTIES, INC. *L. A. Donnay* President  
*Geraldine D. Donnay* Secretary

State of Minnesota } On this 9 day of NOVEMBER A.D. 1960, before me a Notary Public, within and for said County and State, personally appeared L. A. Donnay and Geraldine D. Donnay, to me personally known, who being by me duly sworn, did say that they are the President and Secretary respectively of Land & Properties, Inc., the corporation named in the foregoing instrument; that the seal affixed to said instrument is the corporate seal of said corporation, and that said instrument was signed and sealed in behalf of said corporation by authority of its Board of Directors and said L. A. Donnay and Geraldine D. Donnay acknowledged said instrument to be the free act and deed of said corporation.

I hereby certify that I have surveyed and platted the land described in the dedication on this plat as DONNAY'S OAK PARK 6th; that this plat is a correct representation of said survey; that all distances are correctly shown on said plat in figures denoting feet and decimals of a foot; that the monuments for the guidance of future surveys have been correctly placed in the ground on the annexed plat; that the outside boundaries of the land are correctly designated on said plat; and that there are no wet lands or public highways to be designated on said plat other than are shown thereon.

State of Minnesota } Above certificate subscribed and sworn to before me, a Notary Public within and for said County and State, County of Hennepin } on this 9th day of August A.D. 1960.

We hereby certify that the Village Council of the Village of Blaine, Anoka County, Minnesota, duly accepted and approved the annexed plat of DONNAY'S OAK PARK 6th at a regular meeting thereof held this 18 day of November A.D. 1960.

Checked and approved by me this 15th day of December A.D. 1960.  
*Roland W. Anderson* Anoka County Surveyor  
by *Alfred Bernsten* Mayor  
by *Chas. O. Olaf* Clerk

Deed tax hereon due \$ 1.10  
Deed tax paid \$ 1.10  
Receipt No. 60751  
WALTER D. BOWERS  
ANOKA COUNTY TREASURER  
TAXES PAID  
The 2nd day of December 1960  
*Walter D. Bowers* County Treasurer  
ON THE LANDS DESCRIBED WITHIN ARE PAID  
HEREBY CERTIFY THAT TAXES FOR THE YEAR 1959