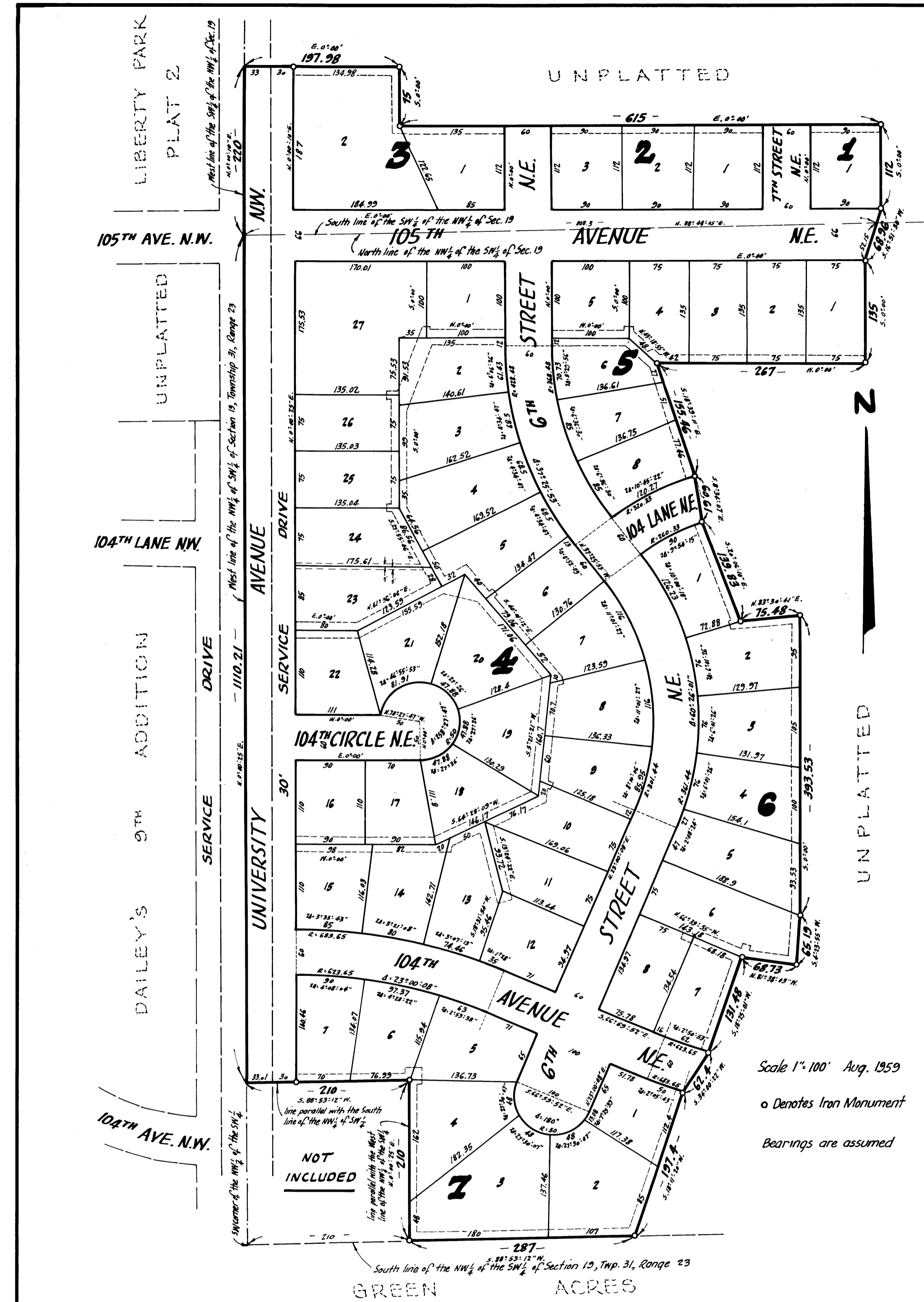
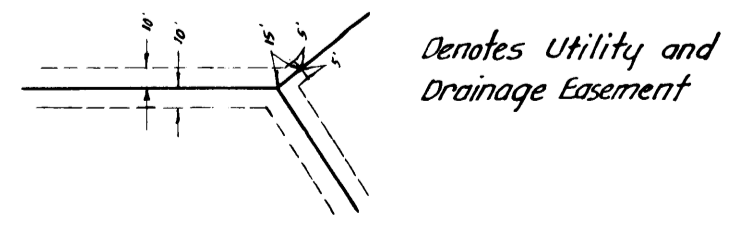


# Donnay's Oak Park

— VILLAGE of BLAINE — COUNTY of ANOKA —



**Suburban**  
**Engineering, Inc.**  
 Engineers & Surveyors



KNOW ALL MEN BY THESE PRESENTS: that Land & Properties, Inc., a Minnesota Corporation, owners and proprietors of the following described property situate in the State of Minnesota and County of Anoka, to-wit: That part of the NW 1/4 of the SW 1/4 and the SW 1/4 of the NW 1/4 of Section 19, Township 31, Range 23 described as beginning at a point in the South line of said NW 1/4 of the SW 1/4 distant 210 feet East of the Southwest corner thereof; thence North 0°00'25" East (said bearing is assumed) along a line parallel with the West line of said NW 1/4 of the SW 1/4 a distance of 210 feet; thence South 88°53'12" West and parallel with said south line a distance of 210 feet to said west line; thence North 0°00'25" East along said West line to the Northwest corner of said NW 1/4 of the SW 1/4; thence North 0°00'10" East along the west line of said SW 1/4 of the NW 1/4 a distance of 220 feet; thence East 0°00' a distance of 197.98 feet; thence South 0°00' a distance of 75 feet; thence East 0°00' a distance of 615 feet; thence South 0°00' a distance of 135 feet; thence West 0°00' a distance of 267 feet; thence South 18°39'11" East a distance of 155.46 feet; thence South 8°34'07" East a distance of 60.61 feet; thence South 20°06'10" East a distance of 139.83 feet; thence North 83°30'41" East a distance of 75.48 feet; thence South 0°00' a distance of 393.53 feet; thence South 4°23'55" West a distance of 65.19 feet; thence North 81°38'03" West a distance of 68.73 feet; thence South 18°25'01" West a distance of 131.48 feet; thence South 34°00'22" West a distance of 62.4 feet; thence South 18°11'20" West a distance of 197.4 feet more or less to the south line of said NW 1/4 of the SW 1/4; thence West along said south line to the point of beginning; have caused the same to be surveyed and platted as DONNAY'S OAK PARK, and do hereby donate and dedicate to the public for public use forever the Circle, Lane, Drive, Streets and Avenues as shown on the annexed plat, subject to the Utility and Drainage Easements as shown on the annexed plat for use of municipality or other public utilities. In witness whereof said Land & Properties, Inc. has caused these presents to be signed by its proper officers and its Corporate Seal to be hereunto affixed this 11th day of SEPTEMBER A.D. 1959.

In Presence of  
 Rolland Walker } As to L.A. Donnay and Geraldine D. Donnay  
 \_\_\_\_\_ }  
 \_\_\_\_\_ }  
 LAND & PROPERTIES, INC.  
 L.A. Donnay } President  
 Geraldine D. Donnay } Secretary

State of Minnesota } s.s. On this 11th day of SEPTEMBER A.D. 1959, before me a Notary Public within and for said County and State, personally appeared L.A. Donnay and Geraldine D. Donnay, to me personally known, who being by me duly sworn, did say that they are the President and Secretary, respectively of Land & Properties, Inc. the corporation named in the foregoing instrument; that the seal affixed to said instrument is the corporate seal of said corporation; and that said instrument was signed and sealed in behalf of said corporation by authority of its Board of Directors, and said L.A. Donnay and Geraldine D. Donnay acknowledged said instrument to be the free act and deed of said corporation.

Rolland Walker }  
 Notary Public, Hennepin County, Minnesota  
 My Commission Expires \_\_\_\_\_

I hereby certify that I have surveyed and platted the land described in the dedication on this plat as DONNAY'S OAK PARK, that this plat is a correct representation of said survey; that all distances are correctly shown on said plat in figures denoting feet and decimals of a foot; that the monuments for the guidance of future surveys have been correctly placed in the ground as shown on said plat; that the topography of the land is correctly shown on said plat; that the outside boundaries of the land are correctly designated on said plat; and that there are no wet lands or public highways to be designated on said plat other than are shown thereon.

E. A. Rathbone }  
 Surveyor - Minnesota Registration N° 3795

State of Minnesota } s.s. Above certificate subscribed and sworn to before me, a Notary Public within and for said County and State, on this 2nd day of August A.D. 1959.

Roland W. Anderson }  
 Anoka County Surveyor

Suzanne Miskowicz }  
 Notary Public, Anoka County, Minnesota  
 My Commission Expires \_\_\_\_\_

We hereby certify that the Village Council of the Village of Blaine, Anoka County, Minnesota, duly accepted and approved the annexed plat of DONNAY'S OAK PARK at a regular meeting thereof held this 22nd day of October A.D. 1959.

by \_\_\_\_\_ Mayor  
 by \_\_\_\_\_ Clerk

203632  
 OFFICE OF REGISTER OF DEEDS  
 STATE OF MINNESOTA, COUNTY OF ANOKA }  
 I hereby certify that the within instrument was filed in this office for record on the \_\_\_\_\_ day of OCT 4 1959 at \_\_\_\_\_ o'clock P.M. and was duly recorded in book \_\_\_\_\_ of Plats page \_\_\_\_\_

Stevan Miskowicz }  
 Register of Deeds  
 By Margaret Russell }  
 Deputy

HEREBY CERTIFY THAT TAXES FOR THE YEAR 1958 ON THE LANDS DESCRIBED WITHIN ARE PAID

Walter D. Bowers }  
 County Treasurer  
 Kenneth M. Campbell }  
 Robert Peterson }  
 Deputy