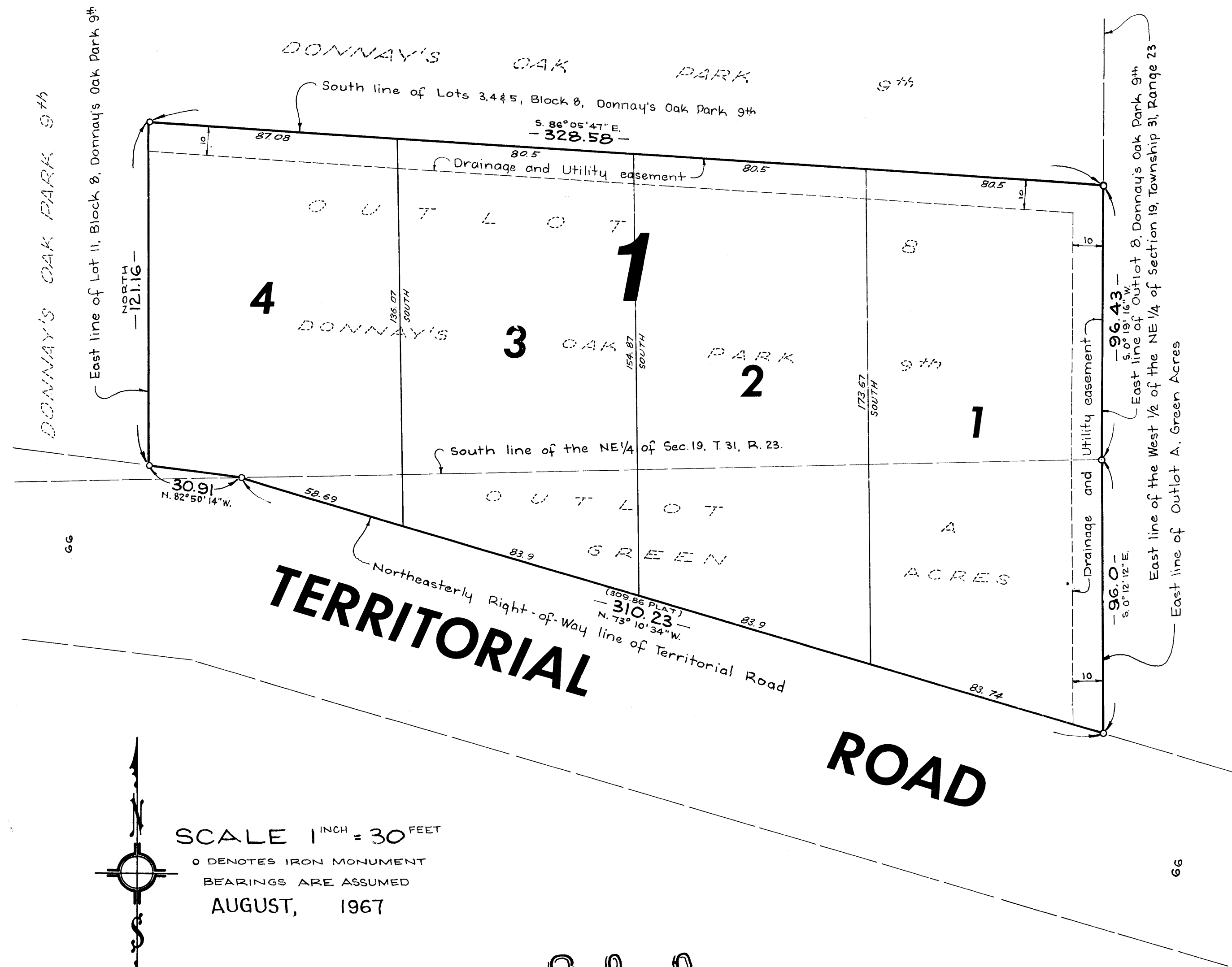


DONNAY'S SCHOOL VIEW

• City of Blaine •

• County of Anoka •



SCALE 1" = 30 FEET

○ DENOTES IRON MONUMENT
BEARINGS ARE ASSUMED
AUGUST, 1967

Suburban Engineering, Inc.
- ENGINEERS & SURVEYORS -

KNOW ALL MEN BY THESE PRESENTS: that Land & Properties, Inc., a Minnesota Corporation, owner and proprietor of the following described property situate in the State of Minnesota and County of Anoka, to-wit: Outlot 8 Donnay's Oak Park 9th and Outlot A Green Acres; has caused the same to be surveyed and platted as DONNAY'S SCHOOL VIEW; subject to the Utility and Drainage Easements. In witness whereof said Land & Properties, Inc. has caused these presents to be signed by its proper officers and its Corporate Seal to be hereunto affixed this 21st day of SEPTEMBER A.D.1967.

In Presence of
William M. McTongal As to L. A. Donnay and Harlan B. Strong
Roland Krueger Strong
L. A. Donnay President
Harlan B. Strong Secretary

State of Minnesota On this 21st day of SEPTEMBER A.D.1967, before me, a Notary Public, within and for County of Hennepin said County and State, personally appeared L. A. Donnay and Harlan B. Strong, to me personally known, who being by me duly sworn, did say that they are the President and Secretary, respectively of Land & Properties, Inc., the corporation named in the foregoing instrument; that the seal affixed to said instrument is the corporate seal of said corporation and that said instrument was signed and sealed in behalf of said corporation by authority of its Board of Directors and said L. A. Donnay and Harlan B. Strong acknowledged said instrument to be the free act and deed of said corporation.

Sam C. Peterson
Notary Public, Hennepin County, Minnesota
My Commission Expires _____

I hereby certify that I have surveyed and platted the property described on this plat as DONNAY'S SCHOOL VIEW; that this plat is a correct representation of said survey; that all distances are correctly shown on the plat in feet and decimals of a foot; that all monuments have been correctly placed in the ground as shown on said plat; that the outside boundary lines are correctly designated on said plat, and that there are no wet lands or public highways to be designated on said plat other than as shown thereon.

E. A. Rattlun
Surveyor - Minnesota Registration No. 3795

State of Minnesota Surveyors certificate subscribed and sworn to before me, a Notary Public within and for said County of Hennepin County and State, on this 17th day of August A.D.1967.

Warren O. Olson
Notary Public, Hennepin County, Minnesota
My Commission Expires July 12, 1974

We hereby certify that the City Council of the City of Blaine, Anoka County, Minnesota, duly accepted and approved the annexed plat of DONNAY'S SCHOOL VIEW at a regular meeting thereof held this 21 day of SEPT A.D.1967.

CITY OF BLAINE, ANOKA COUNTY, MINNESOTA
By Mc Remsall Jr Mayor
By DA Jun Clerk

Checked and approved by me, this 1st day of February A.D.1971
By Roland W. Anderson
Anoka County Surveyor

362209
OFFICE OF REGISTER OF DEEDS
STATE OF MINNESOTA, COUNTY OF ANOKA } ss
I hereby certify that the within instrument was filed in this office for recording on the 11 day of FEB 1972 at 12:15 o'clock P.M., and was duly recorded in book 287 page 10
"NO DELINQUENT TAXES"
Feb 11 1972
Charles R. Salovey
Auctioneer, Anoka County
By Keith J. Wahl Deputy
Teed J. Omsdahl
Register of Deeds
By Margaret A. Hill Deputy