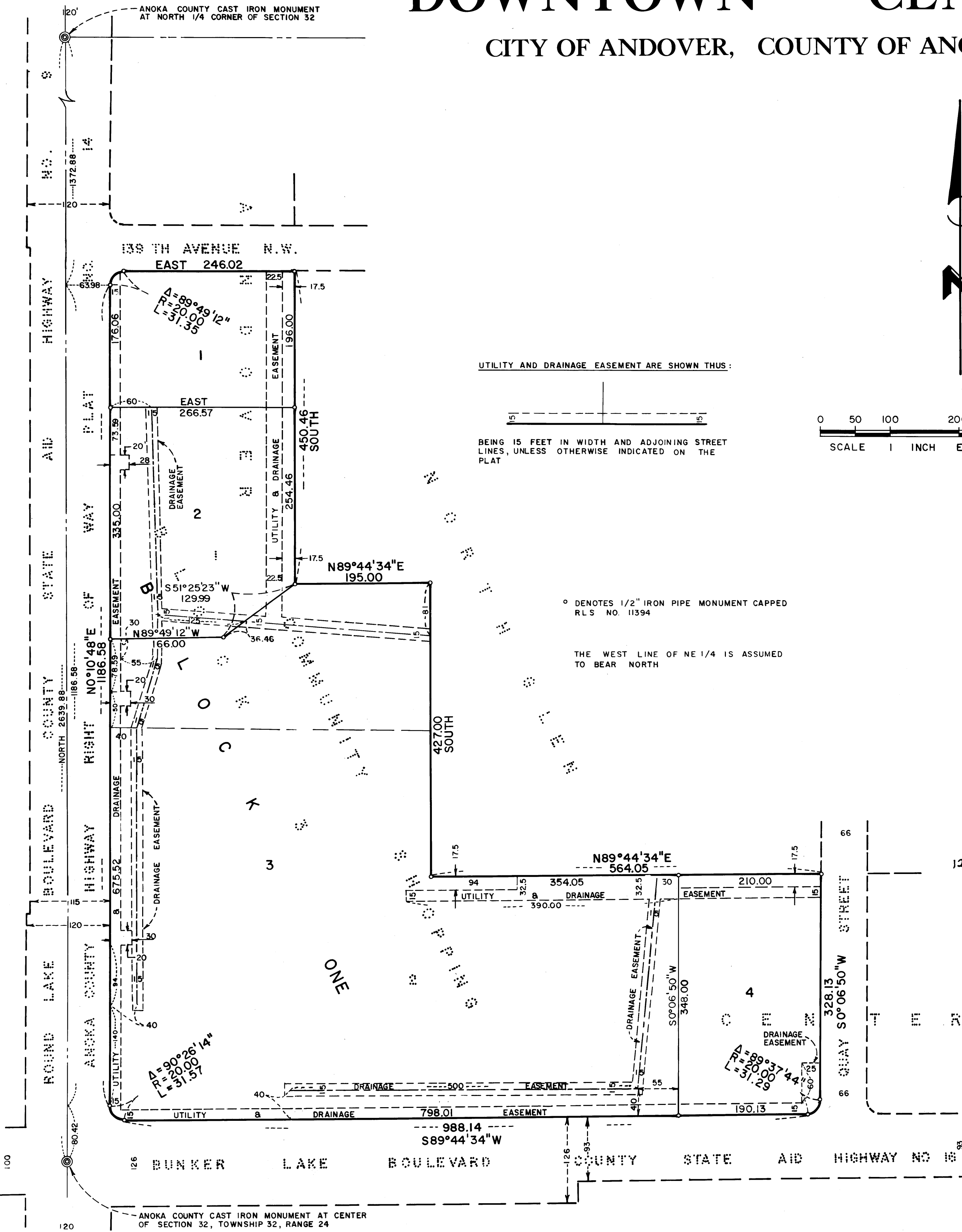


ORR SCHELEN MAYERON
AND ASSOCIATES, INC.
LAND SURVEYORS AND
CONSULTING ENGINEERS

DOWNTOWN CENTER

CITY OF ANDOVER, COUNTY OF ANOKA



KNOW ALL PERSONS BY THESE PRESENTS: That Andover Limited Partnership, a Minnesota Limited Partnership, fee owner, and First National Bank of Minneapolis, a National Banking Association, mortgagee of the following described property situated in the County of Anoka, State of Minnesota to wit:

Lots 1 and 2, Block 3, ANDOVER COMMUNITY SHOPPING CENTER, according to the plat on file in the office of the County Recorder, Anoka County, Minnesota.

Have caused the same to be surveyed and platted as DOWNTOWN CENTER and do hereby dedicate to the public for public use forever the utility and drainage easements as shown on the plat.

In witness whereof said Andover Limited Partnership, a Minnesota Limited Partnership, has caused these presents to be signed by its Managing General Partner this 21 day of OCTOBER, 1986

ANDOVER LIMITED PARTNERSHIP
Robert J. Boisclair
Robert J. Boisclair, Managing General Partner

In witness whereof First National Bank of Minneapolis, a National Banking Association, has caused these presents to be signed by its proper officers this 23 day of OCTOBER, 1986.

FIRST NATIONAL BANK OF MINNEAPOLIS
Leif D. Carlson Assistant Vice President
Kathleen A. Drannen Assistant Vice President
STATE OF MINNESOTA
COUNTY OF Hennepin

The foregoing instrument was acknowledged before me this 21 day of October, 1986, by Robert J. Boisclair, Managing General Partner of Andover Limited Partnership, a Minnesota Limited Partnership, on behalf of the Partnership.

STATE OF MINNESOTA
COUNTY OF Hennepin

The foregoing instrument was acknowledged before me this 23 day of OCTOBER, 1986, by KENT D. CARLSON, its ASSISTANT VICE PRESIDENT, and KATHLEEN A. DRANNEN, its ASSISTANT VICE PRESIDENT, of First National Bank of Minneapolis, a National Banking Association, on behalf of the Association.

Judy A. Payne JUDY A. PAYNE
Notary Public, Anoka County, Minnesota
My Commission Expires: April 8, 1992

I, D. Edward Ames, hereby certify that I have surveyed and platted the property described in the dedication of this plat as DOWNTOWN CENTER, that this plat is a correct representation of said survey; that all distances are correctly shown on the plat in feet and hundredths of a foot; that all monuments have been correctly placed in the ground as shown; that the outside boundary lines are correctly designated on the plat; and there are no wetlands, easements, or public highways other than as shown thereon.

D. Edward Ames
D. Edward Ames, Land Surveyor
Minnesota License No. 11394

STATE OF MINNESOTA
COUNTY OF RAMSEY

The foregoing instrument was acknowledged before me this 20th day of OCTOBER, 1986, by D. Edward Ames, Land Surveyor.

Daniel R. McGibbon
Daniel R. McGibbon
Notary Public, Ramsey County, Minnesota
My Commission Expires: January 30, 1990

CITY COUNCIL OF THE CITY OF ANDOVER, MINNESOTA
This plat was approved and accepted by the City Council of the City of Andover, Minnesota at a regular meeting thereof held this 7th day of OCTOBER, 1986. If applicable, the written comments and recommendations of the Commissioner of Transportation and the County Highway Engineer have been received by the City or the prescribed 30 day period has elapsed without receipt of such comments and recommendations, as provided by Minn. Statutes, Section 505.03, Subd. 2.

James W. ... Mayor
James E. Schrantz
ANOKA COUNTY SURVEYOR
Checked and approved this 29th day of October, 1986.
Roland W. Anderson
Roland W. Anderson
Anoka County Surveyor

732024
OFFICE OF COUNTY RECORDER
STATE OF MINNESOTA, COUNTY OF ANOKA
This plat was recorded on the 21st day of October, 1986, at 12:30 P.M. in Book 37 of Plats, page 1.
By *Paul J. Dondall*
Deputy

"NO DELINQUENT TAXES AND TRANSFER ENTERED"
October 29, 1986
Charles R. ...
Auditor, Anoka County
By *Janell M. ...*
Deputy

I HEREBY CERTIFY THAT THE TAXES PAYABLE IN THE YEAR 1986 ON THE LANDS DESCRIBED WITHIN ARE PAID.
Donald C. Bailey, M. Dwyer
Anoka County Treasurer