

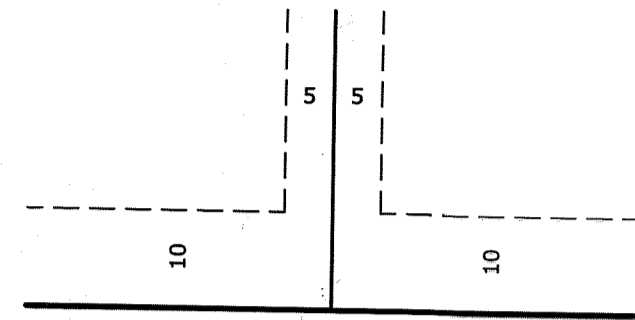


# DRYDEN ACRES INSET 'A'

614328.003/2404634.002

CITY OF NOWTHEN  
COUNTY OF ANOKA  
SEC. 27, TWP. 33, RNG. 25

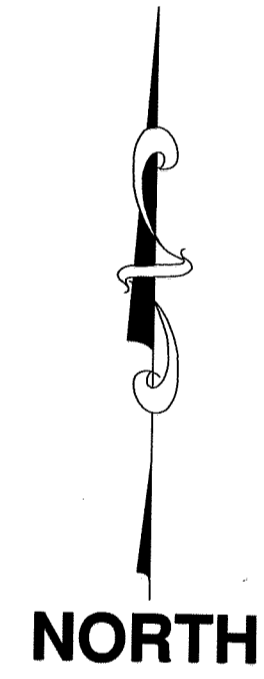
DRAINAGE AND UTILITY EASEMENTS ARE SHOWN THUS:  
(NOT TO SCALE)



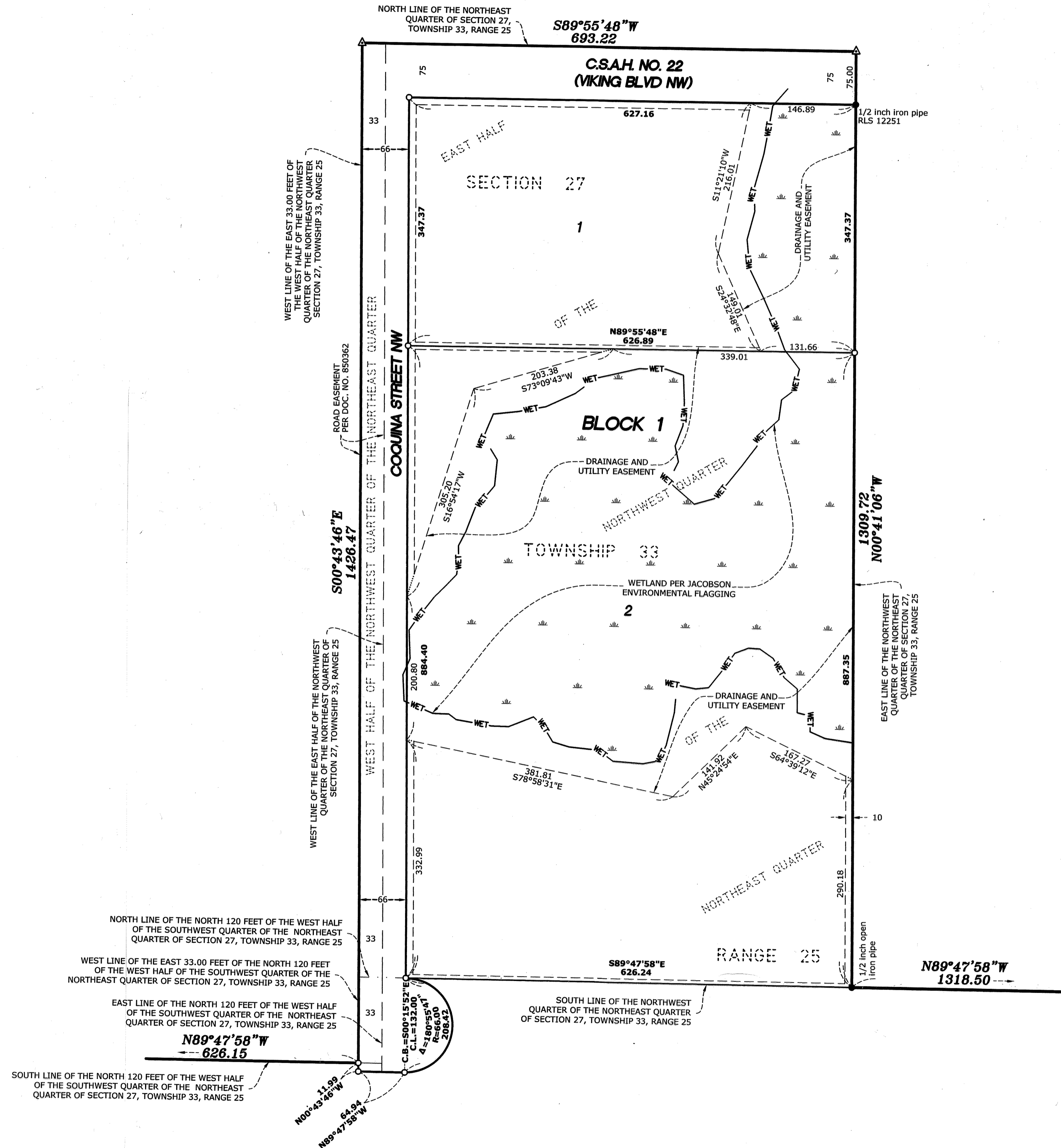
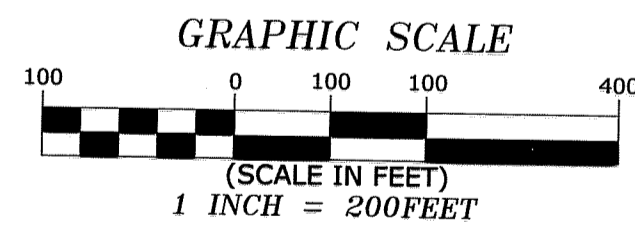
BEING 10 FEET IN WIDTH TO RIGHT OF WAY LINES, AND  
5 FEET IN WIDTH TO ADJOINING LOT LINES UNLESS  
OTHERWISE SHOWN ON THIS PLAT.

## LEGEND

- DENOTES IRON MONUMENT FOUND AS LABELED
- DENOTES 1/2 INCH BY 1/2 INCH IRON PIPE SET, MARKED RLS 52140
- △ DENOTES SET PKNAIL
- WET DENOTES WETLANDS DELINEATED BY JACOBSON ENVIRONMENTAL ON 20TH JULY, 2021

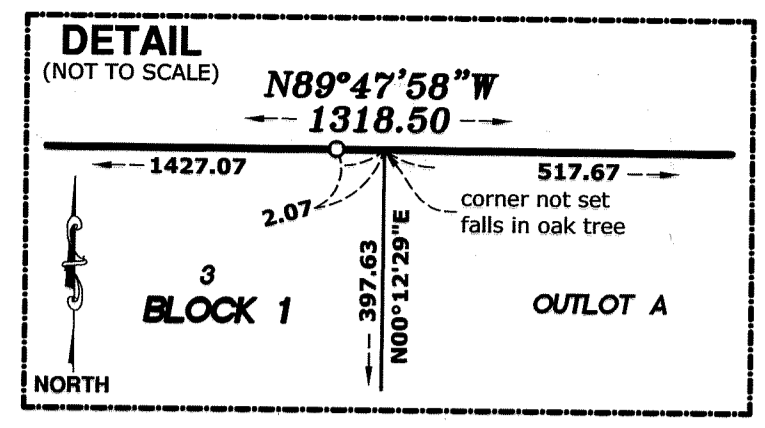


FOR THE PURPOSES OF THIS PLAT, THE NORTH LINE OF THE  
NORTHEAST QUARTER OF SECTION 27, TOWNSHIP 33 NORTH,  
RANGE 25 WEST, ANOKA COUNTY, MINNESOTA, IS ASSUMED  
TO BEAR SOUTH 89 DEGREES 55 MINUTES 48 SECONDS WEST.

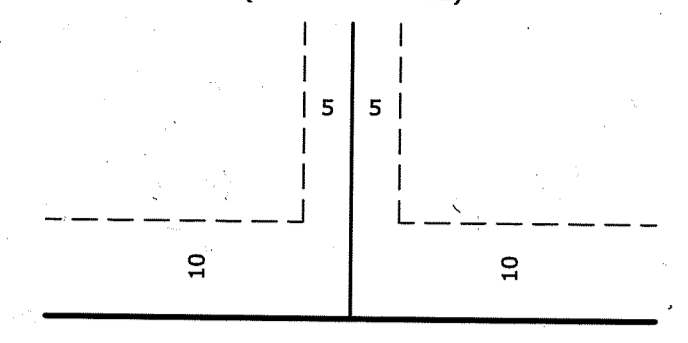


# DRYDEN ACRES INSET 'B'

CITY OF NOWTHEN  
COUNTY OF ANOKA  
SEC. 27, TWP. 33, RNG. 25



DRAINAGE AND UTILITY EASEMENTS ARE SHOWN THUS:  
(NOT TO SCALE)



BEING 10 FEET IN WIDTH TO RIGHT OF WAY LINES,  
AND 5 FEET IN WIDTH TO ADJOINING LOT LINES  
UNLESS OTHERWISE SHOWN ON THIS PLAT.

### LEGEND

- DENOTES IRON MONUMENT FOUND AS LABELED
- DENOTES 14 INCH BY HALF INCH IRON PIPE SET, MARKED RLS 52140
- DENOTES ANOKA COUNTY CAST IRON MONUMENT
- WET DENOTES WETLANDS PER AERIAL PHOTOGRAPHY, SOILS MAP, AND NATIONAL WETLAND INVENTORY.

FOR THE PURPOSES OF THIS PLAT, THE NORTH LINE OF THE  
NORTHEAST QUARTER OF SECTION 27, TOWNSHIP 33 NORTH,  
RANGE 25 WEST, ANOKA COUNTY, MINNESOTA, IS ASSUMED  
TO BEAR SOUTH 89 DEGREES 55 MINUTES 48 SECONDS WEST.

