

EAGLE BROOK CHURCH BLAINE CAMPUS

City of Blaine
County of Anoka
Sec. 26, Twp. 31, Rng. 23

KNOW ALL PERSONS BY THESE PRESENTS: That Eagle Brook Church of White Bear Lake, Minnesota, a Minnesota non-profit corporation, owner of the following described property:

Lot 1, Block 1, and Outlots A and B, BLAINE PRESERVE BUSINESS PARK THIRD ADDITION, Anoka County, Minnesota.

Has caused the same to be surveyed and platted as EAGLE BROOK CHURCH BLAINE CAMPUS and does hereby dedicate to the public for public use the drainage and utility easements as shown on this plat.

In witness whereof said Eagle Brook Church of White Bear Lake, Minnesota, a Minnesota non-profit corporation, has caused these presents to be signed by its proper officer this 19 day of March, 2018.

Eagle Brook Church of White Bear Lake, Minnesota

Gari Pisca, Vice President/Secretary
Gari Pisca

STATE OF MINNESOTA
COUNTY OF Anoka
This instrument was acknowledged before me this 19 day of March, 2018
by Gari Pisca, Vice President/Secretary of Eagle Brook Church of White Bear Lake, Minnesota, a Minnesota non-profit corporation, on behalf of the company.

Ashley Milton
Notary Public, Anoka County, Minnesota
My Commission Expires January 31, 2022

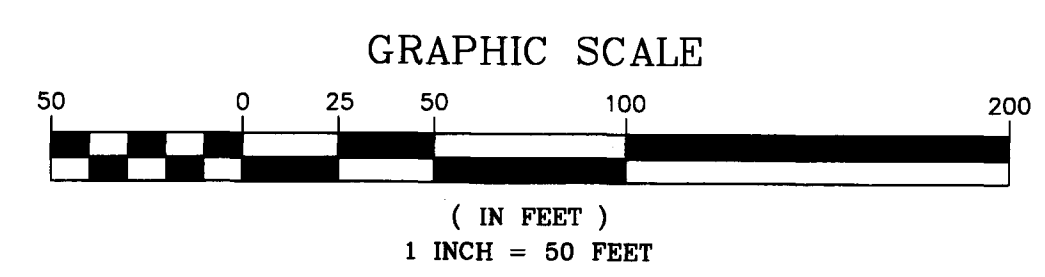
I Daniel W. Obermiller do hereby certify that this plat was prepared by me or under my direct supervision; that I am a duly Licensed Land Surveyor in the State of Minnesota; that this plat is a correct representation of the boundary survey; that all mathematical data and labels are correctly designated on this plat; that all monuments depicted on this plat have been, or will be correctly set within one year; that all water boundaries and wet lands, as defined in Minnesota Statutes, Section 505.01, Subd. 3, as of the date of this certificate are shown and labeled on this plat; and all public ways are shown and labeled on this plat.

Dated this 13th day of March, 2018.

Daniel W. Obermiller
Daniel W. Obermiller, Licensed Land Surveyor
Minnesota Registration No. 25341

STATE OF MINNESOTA
COUNTY OF Anoka
This instrument was acknowledged before me this 13 day of March, 2018 by
Daniel W. Obermiller.

Lalke Mack
Notary Public, Anoka County, Minnesota
My Commission Expires 1/31/2022



City Council, City of Blaine, Minnesota
This plat of EAGLE BROOK CHURCH BLAINE CAMPUS was approved and accepted by the City Council of the City of Blaine, Minnesota at a regular meeting thereof held this 1st day of February, 2018 and said plat is in compliance with the provisions of Minnesota Statutes, Section 505.03, Subd. 2.

City Council, City of Blaine, Minnesota
By [Signature] Mayor By [Signature] Clerk

COUNTY SURVEYOR
I hereby certify that in accordance with Minnesota Statutes, Section 505.021, Subd. 11, this plat has been reviewed and approved this 2nd day of April, 2018.

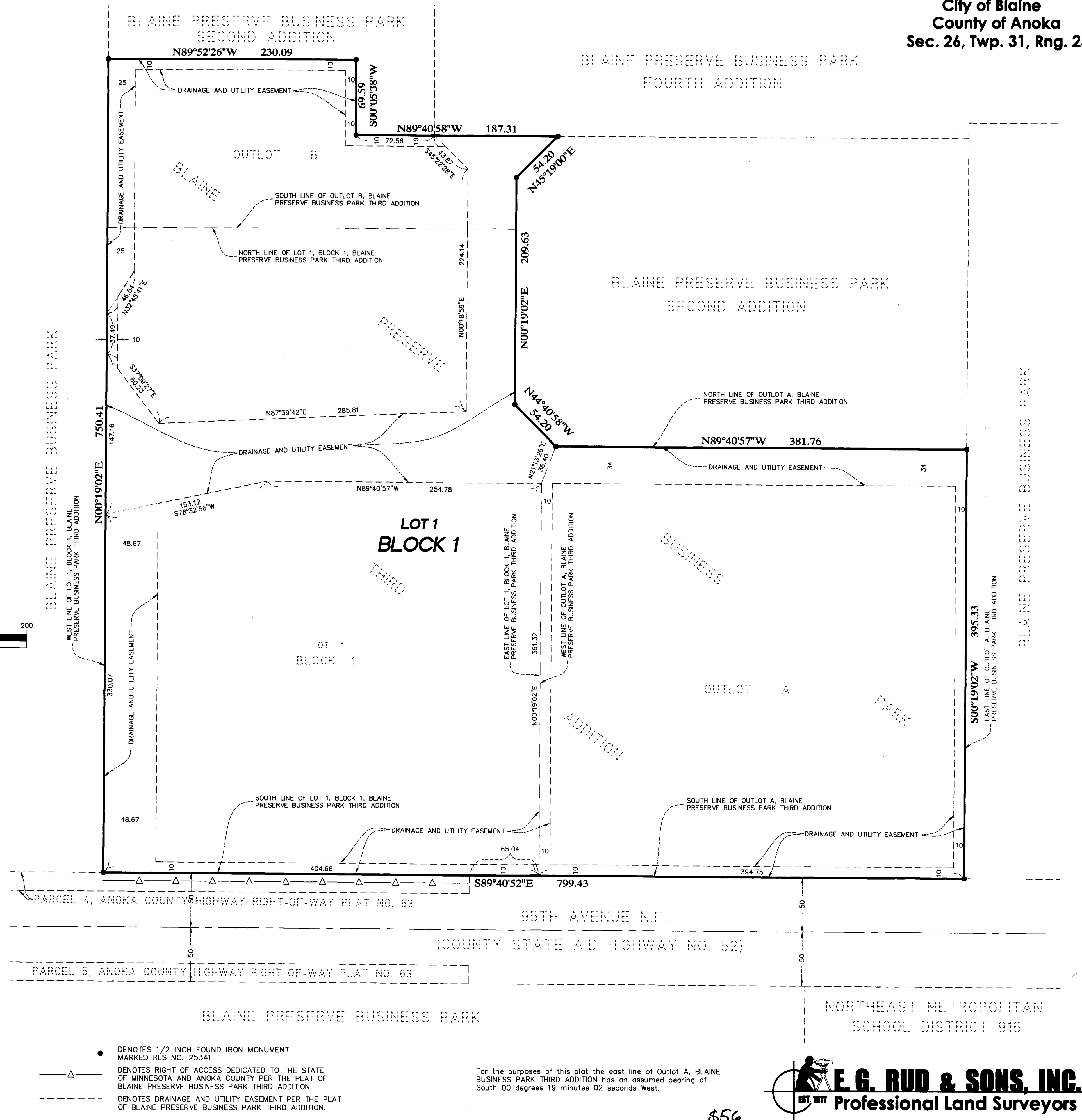
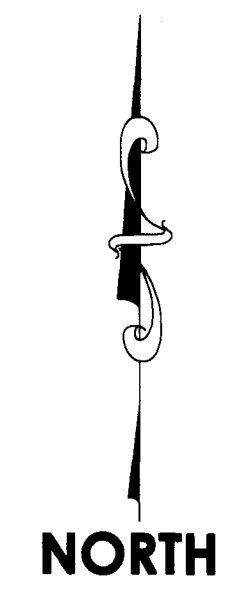
Charles F. Gitzen
Larry D. Holm Charles F. Gitzen
Anoka County Surveyor

COUNTY AUDITOR/TREASURER
Pursuant to Minnesota Statutes, Section 505.021, Subd. 9, taxes payable in the year 2018 on the land hereinbefore described have been paid. Also, pursuant to Minnesota Statutes, Section 272.12, there are no delinquent taxes and transfer entered this 2 day of April, 2018.

Jonell M. Sawyer
Property Tax Administrator
By [Signature] Deputy

COUNTY RECORDER/REGISTRAR OF TITLES
COUNTY OF ANOKA, STATE OF MINNESOTA
I hereby certify that this plat of EAGLE BROOK CHURCH BLAINE CAMPUS was filed in the office of the County Recorder/Registrar of Titles for public record on this 2 day of April, 2018, at 11:14 o'clock A.M. and was duly recorded as Document Number 555837.007

Jonell M. Sawyer
County Recorder/Registrar of Titles
By [Signature] Deputy



- DENOTES 1/2 INCH FOUND IRON MONUMENT. MARKED RLS NO. 25341
- △— DENOTES RIGHT OF ACCESS DEDICATED TO THE STATE OF MINNESOTA AND ANOKA COUNTY PER THE PLAT OF BLAINE PRESERVE BUSINESS PARK THIRD ADDITION.
- - - - - DENOTES DRAINAGE AND UTILITY EASEMENT PER THE PLAT OF BLAINE PRESERVE BUSINESS PARK THIRD ADDITION.

For the purposes of this plat the east line of Outlot A, BLAINE BUSINESS PARK THIRD ADDITION has an assumed bearing of South 00 degrees 19 minutes 02 seconds West.

\$56

