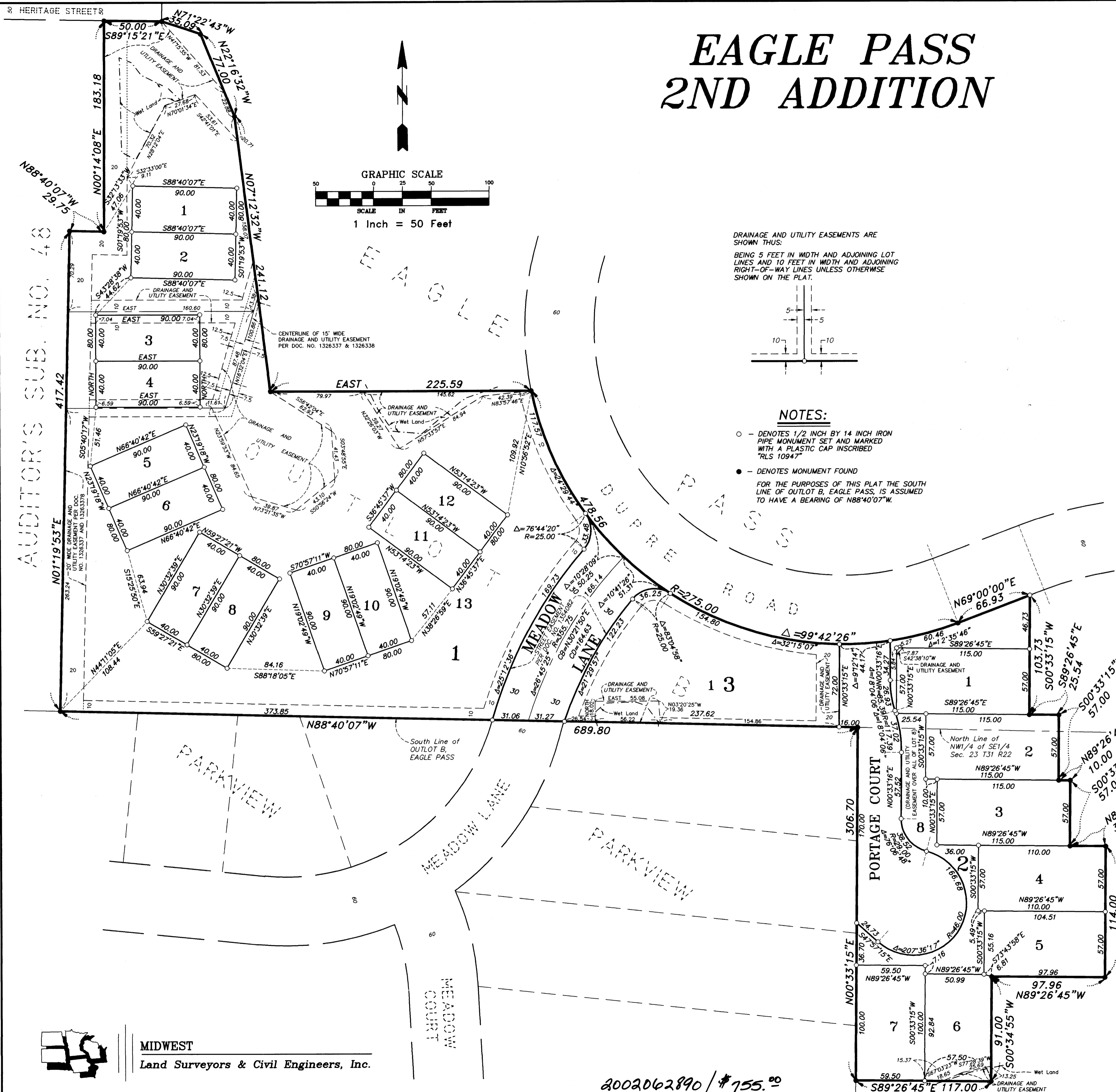


# EAGLE PASS 2ND ADDITION

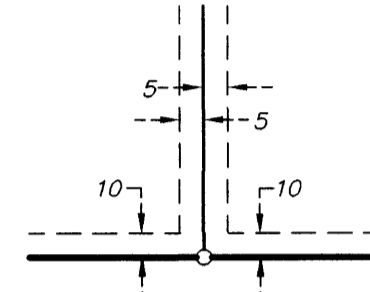
OFFICIAL PLAT

CITY OF CENTERVILLE  
COUNTY OF ANOKA  
SEC.23-T31N-R22W

Book 62, Page 19



DRAINAGE AND UTILITY EASEMENTS ARE SHOWN THUS:  
BEING 5 FEET IN WIDTH AND ADJOINING LOT LINES AND 10 FEET IN WIDTH AND ADJOINING RIGHT-OF-WAY LINES UNLESS OTHERWISE SHOWN ON THE PLAT.



**NOTES:**

- - DENOTES 1/2 INCH BY 14 INCH IRON PIPE MONUMENT SET AND MARKED WITH A PLASTIC CAP INSCRIBED "RLS 10947"
  - - DENOTES MONUMENT FOUND
- FOR THE PURPOSES OF THIS PLAT THE SOUTH LINE OF OUTLOT B, EAGLE PASS, IS ASSUMED TO HAVE A BEARING OF N88°40'07\"

Doc. # 1676562  
OFFICE OF COUNTY RECORDER  
STATE OF MINNESOTA, COUNTY OF ANOKA  
I hereby certify that the within instrument was filed in this office for record on the May 20 A.D., 2002  
at 1:50 o'clock P.M., and was duly recorded in book 62, page 19  
Maurice J. Melville  
County Recorder  
By SG  
Deputy

HEREBY CERTIFY THAT THE CURRENT AND DELINQUENT TAXES ON THE LANDS DESCRIBED WITHIN ARE PAID AND THE TRANSFER IS ENTERED  
May 20 2002  
MAURICE J. MELVILLE  
COUNTY RECORDER  
BY J. Culver  
DEPUTY PROPERTY TAX ADMINISTRATOR

KNOW ALL PERSONS BY THESE PRESENTS: That Gor-Em, LLC, a Minnesota Limited Liability Company, fee owner of the following described property situated in the County of Anoka, State of Minnesota to wit:

Outlot B, EAGLE PASS, Anoka County, Minnesota.

Has caused the same to be surveyed and platted as EAGLE PASS 2ND ADDITION, and do hereby donate and dedicate to the public use forever the court, lane and easements for drainage and utility purposes as shown on the plat.

In witness whereof said Gor-Em, LLC, a Minnesota Limited Liability Company, has caused these presents to be signed by its proper officer this 20th day of May, 2002.

GOR-EM, LLC  
Gary M. Gorham  
Gary M. Gorham, Chief Manager

STATE OF MINNESOTA  
COUNTY OF Anoka  
The foregoing instrument was acknowledged before me this 20th day of May, 2002, by Gary M. Gorham as Chief Manager, of Gor-Em, LLC, a Minnesota Limited Liability Company, on behalf of the company.

REBECCA A. BAUNE  
NOTARY PUBLIC - MINNESOTA  
MY COMMISSION EXPIRES  
JANUARY 31, 2005

Rebecca A. Baune  
Notary Public, Anoka County, Minnesota  
My commission expires 1-31-2005

I, Rodney H. Halvorson, hereby certify that I have surveyed and platted the property described on this plat as EAGLE PASS 2ND ADDITION; that this plat is a correct representation of the survey; that all distances are correctly shown on the plat in feet and hundredths of a foot; that all monuments will be correctly placed in the ground as shown within one year after the recording date of this plat; that the outside boundary lines are correctly designated on the plat and that there are no wetlands as defined in MS 505.02, Subd. 1 or public highways to be designated on said plat other than as shown.

Rodney H. Halvorson  
Rodney H. Halvorson, Land Surveyor  
Minnesota License No. 10947

STATE OF MINNESOTA  
COUNTY OF Anoka  
The foregoing instrument was acknowledged before me this 14th day of May, 2002, by Rodney H. Halvorson, Land Surveyor.

BLAKE L. RIVARD  
NOTARY PUBLIC - MINNESOTA  
MY COMMISSION EXPIRES  
JAN 31, 2005

Blake L. Rivard  
Notary Public, Anoka County, Minnesota  
My commission expires 1-31-05

The foregoing plat of EAGLE PASS 2ND ADDITION was approved and accepted by the City Council of Centerville, Minnesota at a regular meeting thereof held this 20th day of May, 2002. If applicable, the written comments and recommendations of the Commissioner of Transportation and the County Highway Engineer have been received by the City or the prescribed 30 day period has elapsed without receipt of such comments and recommendations, as provided by Minnesota Statutes, Section 505.03, Subd. 2.

CITY COUNCIL OF CENTERVILLE, MINNESOTA  
By Tim Sudding Mayor  
By Anna Winkler Clerk

Checked and approved this 20th day of May, 2002  
Larry D. Hamby  
Anoka County Surveyor

MIDWEST  
Land Surveyors & Civil Engineers, Inc.

2002062890 / \$755.00