

# EAST VILLAGE ADDITION

CITY OF ST. FRANCIS  
COUNTY OF ANOKA  
SEC. 32, T. 34, R. 24

KNOW ALL PERSONS BY THESE PRESENTS: That the City of St. Francis, a Minnesota Municipal Corporation under the laws of the State of Minnesota, owner of the following described property:

That part of the Southwest Quarter of the Southeast Quarter of Section 32, Township 34, Range 24, Anoka County, Minnesota, described as follows:

Commencing at the Southeast corner of said Southwest Quarter of the Southeast Quarter; thence North 00 degrees 15 minutes 14 seconds West, assumed bearing along the East line of said Southwest Quarter of the Southeast Quarter, a distance of 360.57 feet to a point to be hereafter referred to as "Point B"; thence South 89 degrees 52 minutes 05 seconds West, a distance of 175.99 feet to a point to be hereafter referred to as "Point A"; thence North 00 degrees 22 minutes 12 seconds West, a distance of 289.41 feet; thence South 89 degrees 42 minutes 41 seconds West, a distance of 165.00 feet; thence North 00 degrees 22 minutes 12 seconds West, a distance of 132.00 feet; thence South 89 degrees 42 minutes 41 seconds West, a distance of 85.82 feet; thence South 00 degrees 24 minutes 08 seconds East, a distance of 170.00 feet; thence South 89 degrees 42 minutes 41 seconds West, a distance of 210.00 feet; thence South 00 degrees 24 minutes 08 seconds East, a distance of 94.00 feet; thence South 89 degrees 42 minutes 41 seconds West, a distance of 165.00 feet; thence North 00 degrees 24 minutes 08 seconds East, a distance of 155.70 feet to the intersection with a line bearing South 89 degrees 52 minutes 05 seconds West from said "Point A", said point of intersection being the point of beginning of the land to be described; thence South 89 degrees 52 minutes 05 seconds West, a distance of 100.00 feet; thence North 00 degrees 24 minutes 08 seconds West, a distance of 419.43 feet; thence South 89 degrees 42 minutes 41 seconds West, a distance of 165.00 feet; thence North 00 degrees 24 minutes 08 seconds East, a distance of 419.25 feet to the intersection with a line which bears South 89 degrees 52 minutes 05 seconds West from the point of beginning; thence South 00 degrees 24 minutes 19 seconds West, a distance of 65.70 feet to the Northwest corner of Lot 1, Block 1, DELLWOOD RIVER ESTATES; thence North 89 degrees 52 minutes 12 seconds East, along the North line of said DELLWOOD RIVER ESTATES, the North line of WALTERS ADDITION, said Anoka County, and the Easterly extension of said North line of WALTERS ADDITION, a distance of 967.70 feet to the intersection with said East line of the Southwest Quarter of the Southeast Quarter; thence North 00 degrees 15 minutes 14 seconds West, along said East line of the Southwest Quarter of the Southeast Quarter, a distance of 65.73 feet to said above described "Point B"; thence South 89 degrees 52 minutes 05 seconds West, a distance of 801.58 feet to the point of beginning.

(Said tract is also known as Lot 1, Block 8, and Lot 5, Block 7, VILLAGE OF ST. FRANCIS)

ALSO

That part of the Southwest Quarter of the Southeast Quarter, Section 32, Township 34, Range 24, Anoka County, Minnesota, described as follows:

Commencing at the southeast corner of said Southwest Quarter of the Southeast Quarter; thence on an assumed bearing of North 00 degrees 15 minutes 14 seconds West, along the east line of said Southwest Quarter of the Southeast Quarter, a distance of 360.57 feet; thence South 89 degrees 52 minutes 05 seconds West, a distance of 175.99 feet to a point hereinafter referred to as Point "A"; thence North 00 degrees 22 minutes 12 seconds West, a distance of 289.41 feet; thence South 89 degrees 42 minutes 41 seconds West, a distance of 165.00 feet; thence North 00 degrees 22 minutes 12 seconds West, a distance of 132.00 feet; thence South 89 degrees 42 minutes 41 seconds West, a distance of 85.82 feet; thence South 00 degrees 24 minutes 08 seconds East, a distance of 170.00 feet; thence South 89 degrees 42 minutes 41 seconds West, a distance of 210.00 feet; thence South 00 degrees 24 minutes 08 seconds East, a distance of 94.00 feet to the point of beginning of the land to be described; thence South 89 degrees 42 minutes 41 seconds West, a distance of 165.00 feet; thence North 00 degrees 24 minutes 08 seconds East, a distance of 155.70 feet to the intersection with a line bearing South 89 degrees 52 minutes 05 seconds West from said Point "A"; thence South 89 degrees 52 minutes 05 seconds West, a distance of 100.00 feet; thence North 00 degrees 24 minutes 08 seconds East, a distance of 419.43 feet; thence North 89 degrees 42 minutes 41 seconds East, a distance of 265.00 feet to the intersection with a line drawn on a bearing of North 00 degrees 24 minutes 08 seconds West from the point of beginning; thence South 00 degrees 24 minutes 08 seconds East, a distance of 264.00 feet to the point of beginning.

(Said tract is also known as Lots 2, and 3, and part of Lot 4, Block 8, "VILLAGE OF ST. FRANCIS".)

Has caused the same to be surveyed and platted as EAST VILLAGE ADDITION and does hereby dedicate to the public for public use the public ways and the drainage and utility easements as shown on this plat.

In witness whereof said City of St. Francis, a Minnesota Municipal Corporation under the laws of the State of Minnesota, has caused these presents to be signed by its proper officers this 18<sup>th</sup> day of August, 2020.

CITY OF ST. FRANCIS

*Hot*  
Steve Feldman, as Mayor

*Barb Held*  
Barb Held, as City Clerk

STATE OF Minnesota  
COUNTY OF Anoka

This instrument was acknowledged before me this 18 day of August, 2020 by Steve Feldman, as Mayor, and Barb Held, as City Clerk, of the City of St. Francis, a Minnesota Municipal Corporation under the laws of the State of Minnesota, on behalf of the corporation.

*Jennifer Wida*  
Signature

Jennifer Wida  
Print Name

Notary Public, Anoka County, MN  
My commission expires 1/31/2021

I Brian Person do hereby certify that this plat was prepared by me or under my direct supervision; that I am a duly Licensed Land Surveyor in the State of Minnesota; that this plat is a correct representation of the boundary survey; that all mathematical data and labels are correctly designated on this plat; that all monuments depicted on this plat have been, or will be correctly set within one year; that all water boundaries and wet lands, as defined in Minnesota Statutes, Section 505.01, Subd. 3, as of the date of this certificate are shown and labeled on this plat; and all public ways are shown and labeled on this plat.

Dated this 24<sup>th</sup> day of June, 2020.

*Brian Person*  
Brian Person, Licensed Land Surveyor  
Minnesota License No. 49138

STATE OF MINNESOTA  
COUNTY OF ANOKA

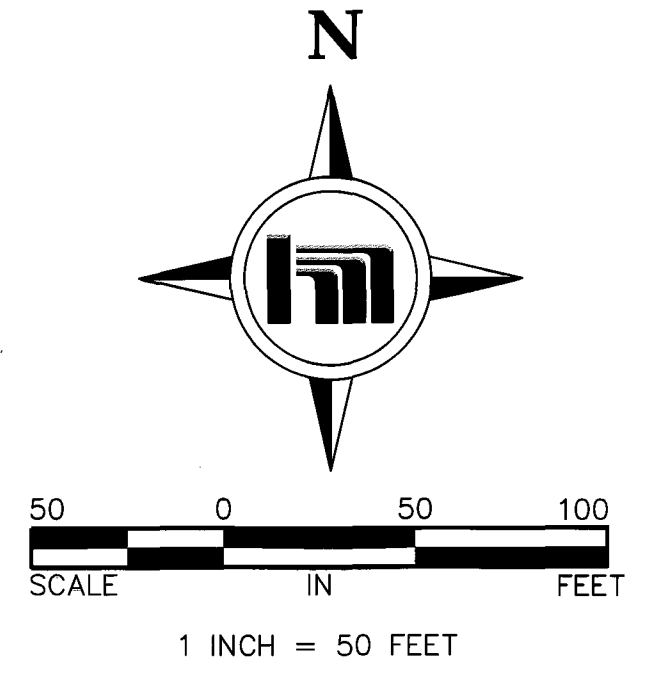
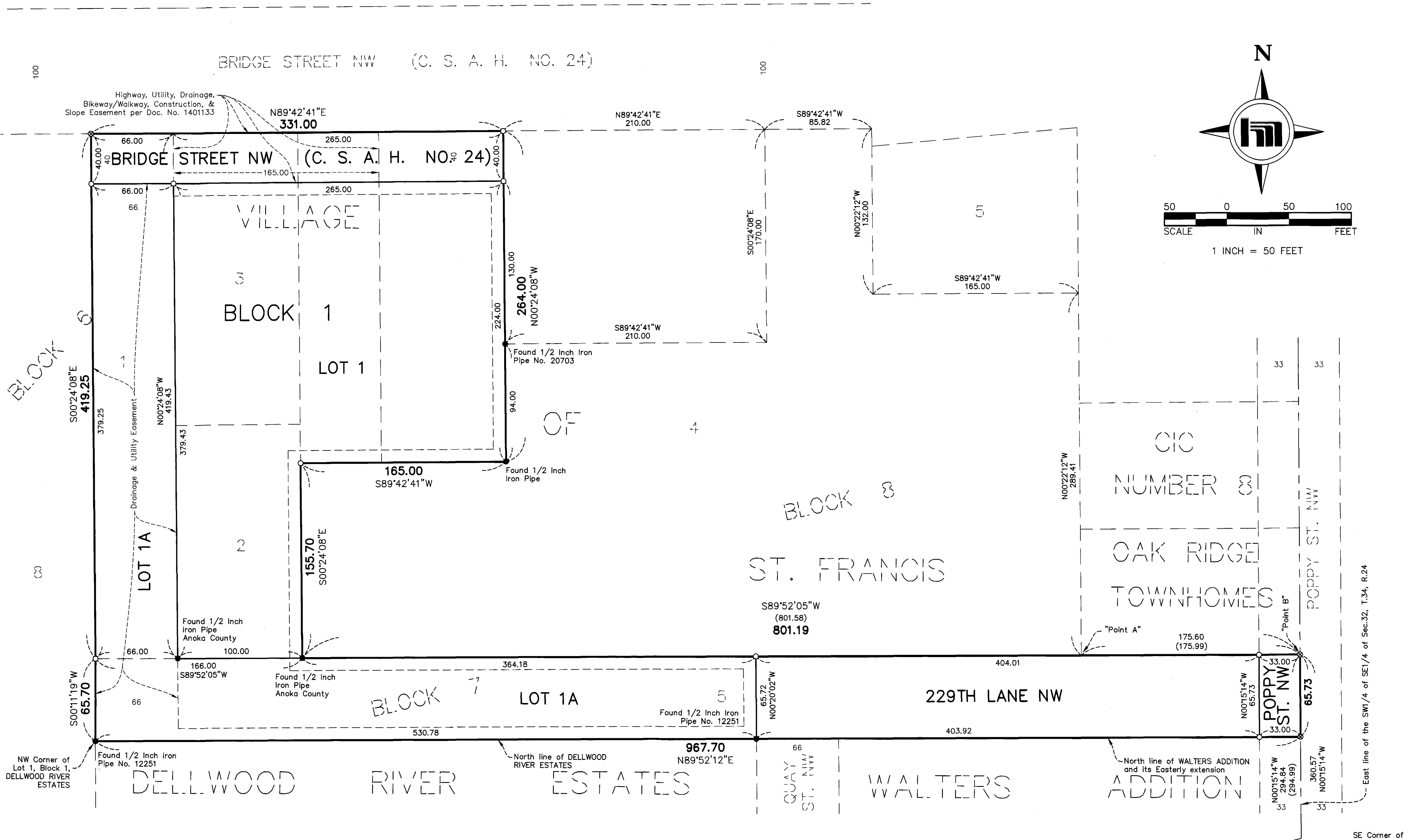
This instrument was acknowledged before me this 24<sup>th</sup> day of June, 2020 by Brian Person.

*Seth M. Monroe*  
Signature

Seth M. Monroe  
Print Name

Notary Public, Minnesota.

My commission expires January 31, 2024



City Council, City of St. Francis, Minnesota

This plat of EAST VILLAGE ADDITION was approved and accepted by the City Council of the City of St. Francis, Minnesota at a regular meeting thereof held this 5<sup>th</sup> day of July, 2016, and said plat is in compliance with the provisions of Minnesota Statutes, Section 505.03, Subd. 2.

City Council, City of St. Francis, Minnesota  
By: *Hot*, Mayor

By: *Barb Held*, Clerk

ANOKA COUNTY SURVEYOR

I hereby certify that in accordance with Minnesota Statutes, Section 505.021, Subd. 11, this plat has been reviewed and approved this 10<sup>th</sup> day of September, 2020.

*Charles F. Gitzen*  
Charles F. Gitzen,  
Anoka County Surveyor

ANOKA COUNTY AUDITOR/TREASURER

Pursuant to Minnesota Statutes, Section 505.021, Subd. 9, taxes payable in the year 2020 on the land hereinbefore described have been paid. Also, pursuant to Minnesota Statutes, Section 272.12, there are no delinquent taxes and transfer entered this 17<sup>th</sup> day of September, 2020.

*Pamela J. LeBlanc*  
Pamela J. LeBlanc  
Property Tax Administrator

By: *Musan B. Waidan*, Deputy

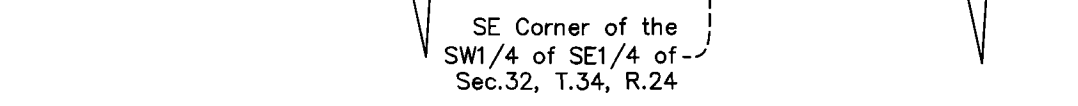
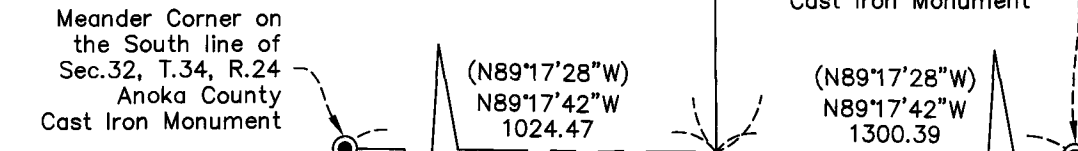
ANOKA COUNTY RECORDER/REGISTRAR OF TITLES

County of Anoka, State of Minnesota

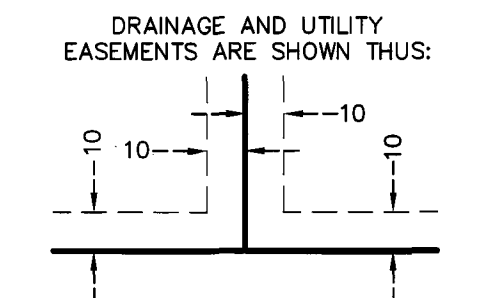
I hereby certify that this plat of EAST VILLAGE ADDITION was filed in the office of the County Recorder/Registrar of Titles for public record on this 17<sup>th</sup> day of September, 2020, at 4:20 o'clock P.M. and was duly recorded as Document Number 578204.002 2278918.003

*Pamela J. LeBlanc*  
County Recorder/Registrar of Titles

By: *Musan B. Waidan*, Deputy



- Denotes 1/2 inch by 14 inch iron monument set and marked with Minnesota License No. 49138.
- Denotes a PK nail set
- Denotes iron monument found as labeled
- Denotes a cast iron monument found
- (175.99) Denotes deed/record call



For the purposes of this plat the East line of the Southwest Quarter of the Southwest Quarter of Sec. 32, T. 34, R. 24 is assumed to bear North 00°15'14\"/>

\$ 56.00 A \$ 56.00 T

