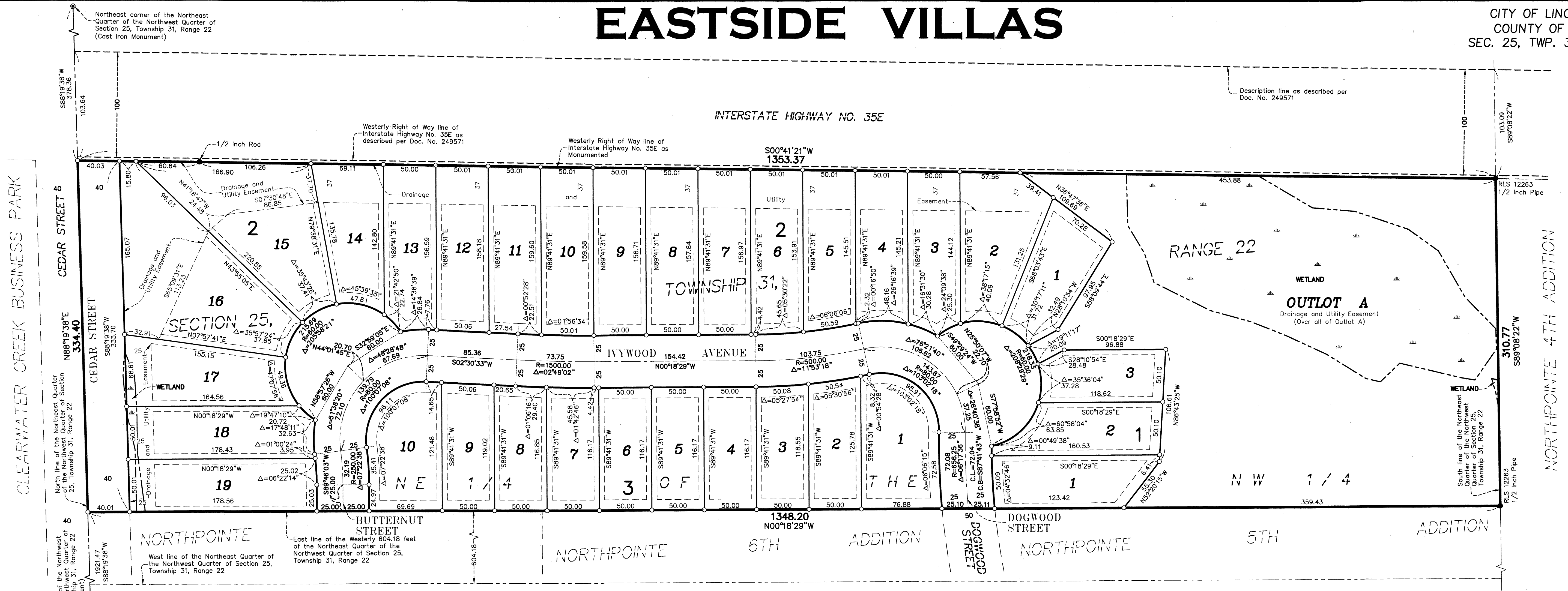


# EASTSIDE VILLAS

CITY OF LINO LAKES  
COUNTY OF ANOKA  
SEC. 25, TWP. 31, RGE. 22



KNOW ALL PERSONS BY THESE PRESENTS: That Hokanson Construction and Development Company, Inc., a Minnesota corporation, owner of the following described property:

That part of the Northeast 1/4 of the Northwest 1/4 of Section 25, Township 31, Range 22, Anoka County, Minnesota, lying easterly of the westerly 604.18 feet thereof, as measured at right angles, and lying westerly of Interstate Highway No. 35E, as monumented.

Has caused the same to be surveyed and platted as EASTSIDE VILLAS and does hereby dedicate to the public for public use the public ways and the drainage and utility easements as shown on this plat.

In witness whereof said Hokanson Construction and Development Company, Inc., a Minnesota corporation, has caused these presents to be signed by its proper officer this 18 day of July, 2019.

**HOKANSON CONSTRUCTION AND DEVELOPMENT COMPANY, INC.**  
*Roger A. Hokanson*  
 Roger A. Hokanson, Vice President

STATE OF Minnesota  
 COUNTY OF Anoka

This instrument was acknowledged before me on July 18, 2019 by Roger A. Hokanson, Vice President of Hokanson Construction and Development Company, Inc., a Minnesota corporation, on behalf of the corporation.

*Cynthia J. Morical* (Signed)  
 Cynthia J. Morical (Printed)  
 Notary Public, Hennepin County, Minnesota  
 My commission expires January 31, 2020

I, Thomas R. Balluff do hereby certify that this plat was prepared by me or under my direct supervision; that I am a duly Licensed Land Surveyor in the State of Minnesota; that this plat is a correct representation of the boundary survey; that all mathematical data and labels are correctly designated on this plat; that all monuments depicted on this plat have been, or will be correctly set within one year; that all water boundaries and wet lands, as defined in Minnesota Statutes, Section 505.01, Subd. 3, as of the date of this certificate are shown and labeled on this plat; and all public ways are shown and labeled on this plat.

Dated this 16<sup>th</sup> day of July, 2019.

*Thomas R. Balluff*  
 Thomas R. Balluff, Licensed Land Surveyor  
 Minnesota License No. 40361

STATE OF Minnesota  
 COUNTY OF Anoka

This instrument was acknowledged before me on July 16, 2019 by Thomas R. Balluff.

*Cynthia J. Morical* (Signed)  
 Cynthia J. Morical (Printed)  
 Notary Public, Hennepin County, Minnesota  
 My commission expires January 31, 2020

CITY COUNCIL, CITY OF LINO LAKES, MINNESOTA

This plat of EASTSIDE VILLAS was approved and accepted by the City Council of the City of Lino Lakes, Minnesota at a regular meeting thereof held this 22<sup>nd</sup> day of April, 2019, and said plat is in compliance with the provisions of Minnesota Statutes, Section 505.03, Subd. 2.

CITY COUNCIL, CITY OF LINO LAKES, MINNESOTA

By: *Jeff Reinert* Mayor  
 By: *Julie Bjrtell* Clerk

COUNTY SURVEYOR

I hereby certify that in accordance with Minnesota Statutes, Section 505.021, Subd. 11, this plat has been reviewed and approved this 15<sup>th</sup> day of August, 2019.

By: *Charles F. Gitzen*  
 Charles F. Gitzen  
 Anoka County Surveyor

COUNTY AUDITOR/TREASURER

Pursuant to Minnesota Statutes, Section 505.021, Subd. 9, taxes payable in the year 2019 on the land hereinbefore described have been paid. Also, pursuant to Minnesota Statutes, Section 272.12, there are no delinquent taxes and transfer entered this 1 day of August, 2019.

*Jonell M. Sawyer*  
 Property Tax Administrator  
 By: *Marcia Earnest* Deputy

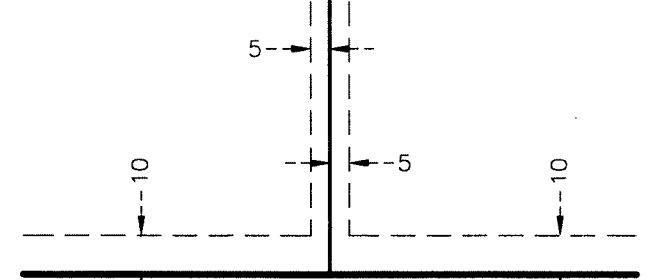
COUNTY RECORDER/REGISTRAR OF TITLES

County of Anoka, State of Minnesota

I hereby certify that this plat of EASTSIDE VILLAS was filed in the office of the County Recorder/Registrar of Titles for public record on this 1 day of August, 2019, at 2:52 o'clock P.M. and was duly recorded as Document Number 2233922.003.

*Jonell M. Sawyer*  
 County Recorder/Registrar of Titles  
 By: *Marcia Earnest* Deputy

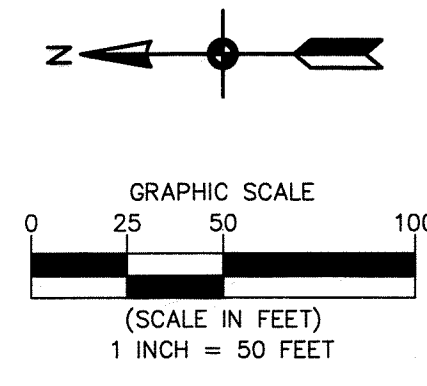
DRAINAGE AND UTILITY EASEMENTS ARE SHOWN THIS:



being 5 feet in width, and adjoining side lot lines, and 10 feet in width and adjoining right of way lines and rear lot lines unless otherwise shown on this plat.

For the purposes of this plat, the North line of the Northeast Quarter of the Northwest Quarter of Section 25, Township 31, Range 22, Anoka County, Minnesota, is assumed to bear N88°19'38"E.

- Denotes Anoka County Section Monument
- Denotes 5/8 inch by 14 inch Rebar, set or to be set within one year of recording of this plat and marked with license number 40361, or as noted otherwise
- Denotes Found Monument, as noted
- Denotes Existing Wetland, delineated by Kjolhaug Environmental Services in 2013.



\$56

