

EASTVIEW MEADOWS SECOND ADDITION

CITY OF ANOKA
COUNTY OF ANOKA
SEC. 5, T31N, R24W

KNOW ALL PERSONS BY THESE PRESENTS: That City of Anoka, a Minnesota Municipal Corporation, owner of the following described property:

Outlot C, EASTVIEW MEADOWS FIRST ADDITION, Anoka County, Minnesota.

Has caused the same to be surveyed and platted as EASTVIEW MEADOWS SECOND ADDITION and does hereby dedicate to the public for public use the drainage and utility easements as shown by this plat.

In witness whereof said City of Anoka, a Minnesota Municipal Corporation, has caused these presents to be signed by its proper officers this 17th day of September, 2018.

CITY OF ANOKA

Phil Rice
Phil Rice, as Mayor

Amy Oehlers
Amy Oehlers, as City Clerk

STATE OF MINNESOTA
COUNTY OF ANOKA

This instrument was acknowledged before me this 17th day of September, 2018 by Phil Rice, as Mayor, and Amy Oehlers, as City Clerk of the City of Anoka, a Minnesota Municipal Corporation, on behalf of the Municipal Corporation.

Rachel Dodge
Rachel Dodge
Notary Public, Hennepin County, Minnesota
My Commission Expires 1-31-2020

I James E. Napier do hereby certify that this plat was prepared by me or under my direct supervision; that I am a duly Licensed Land Surveyor in the State of Minnesota; that this plat is a correct representation of the boundary survey; that all mathematical data and labels are correctly designated on this plat; that all monuments depicted on this plat have been, or will be correctly set within one year; that all water boundaries and wet lands, as defined in Minnesota Statutes, Section 505.01, Subd. 3, as of the date of this certificate are shown and labeled on this plat; and all public ways are shown and labeled on this plat.

Dated this 4th day of September, 2018.

James E. Napier
James E. Napier, Licensed Land Surveyor
Minnesota License No. 25343

STATE OF MINNESOTA
COUNTY OF ANOKA

This instrument was acknowledged before me this 4th day of September, 2018 by James E. Napier.

Nicole A. Jansen
Nicole A. Jansen
Notary Public, Anoka County, Minnesota
My Commission Expires January 31, 2020

City Council, City of Anoka, Minnesota

This plat of EASTVIEW MEADOWS SECOND ADDITION was approved and accepted by the City Council of the City of Anoka, Minnesota at a regular meeting thereof held this 16th day of July, 2018, and said plat is in compliance with the provisions of Minnesota Statutes, Section 505.03, Subd. 2.

City Council, City of Anoka, Minnesota

Phil Rice
Phil Rice, as Mayor

Amy Oehlers
Amy Oehlers, as City Clerk

Anoka Planning Commission

Be it known that at a meeting held on this 4th day of January, 2017, the Planning Commission of the City of Anoka, Minnesota, did hereby review and approve this plat of EASTVIEW MEADOWS SECOND ADDITION.

Planning Commission, City of Anoka, Minnesota

Donald Kjonaae
Donald Kjonaae, as Chairperson

Doug Anglund
as Secretary

County Surveyor

I hereby certify that in accordance with Minnesota Statutes, Section 505.021, Subd. 11, this plat has been reviewed and approved this 24th day of September, 2018.

Charles F. Gitzon
Charles F. Gitzon
Anoka County Surveyor

County Auditor/Treasurer

Pursuant to Minnesota Statutes, Section 505.021, Subd. 9, taxes payable in the year 2018, on the land hereinbefore described have been paid. Also, pursuant to Minnesota Statutes, Section 272.12, there are no delinquent taxes and transfer entered this 24th day of Sept., 2018.

Jonelle M. Sawyer
Jonelle M. Sawyer

Property Tax Administrator

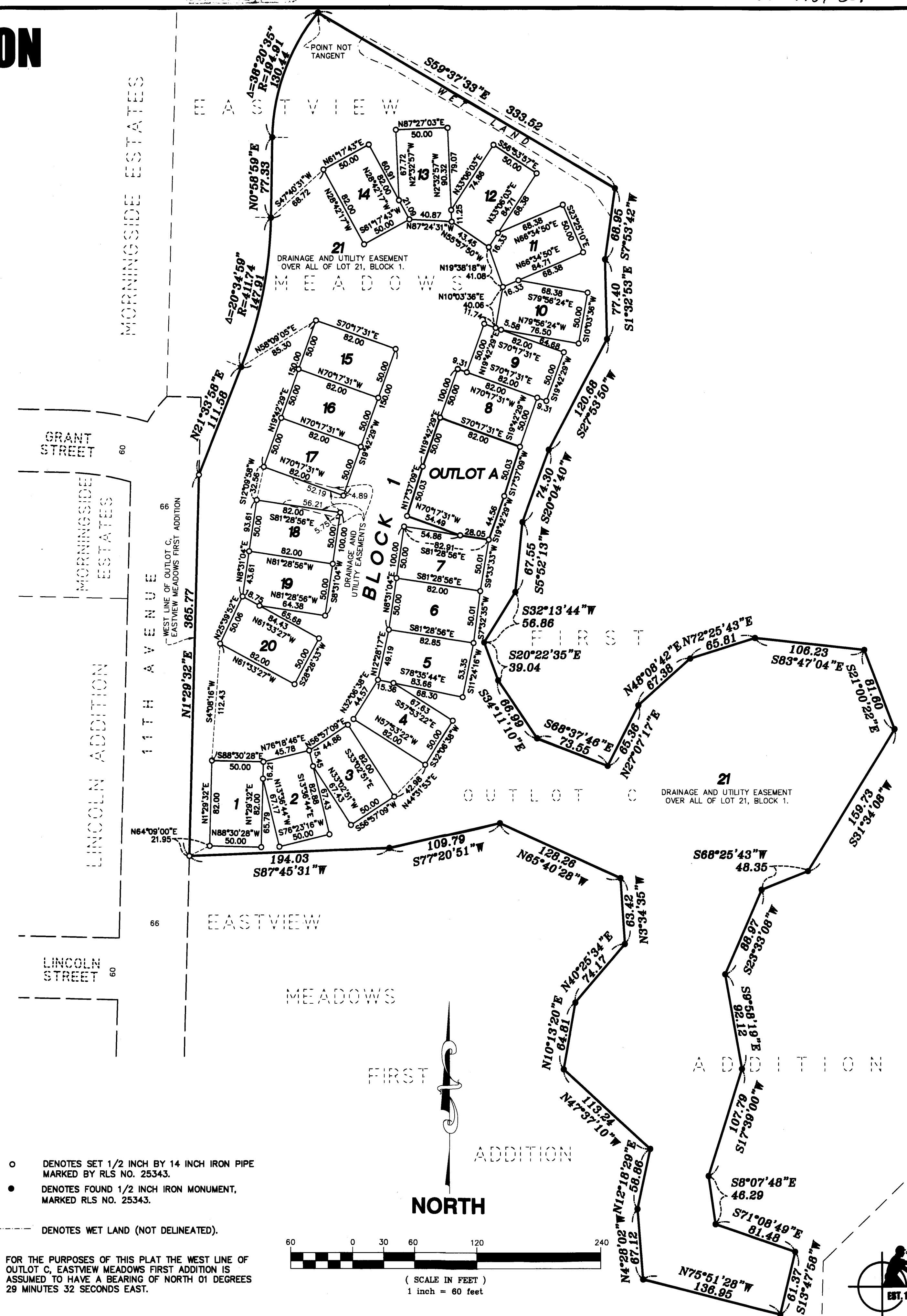
By *Annette Schmidt* Deputy

County Recorder/Registrar of Titles
County of Anoka, State of Minnesota

I hereby certify that this plat of EASTVIEW MEADOWS SECOND ADDITION was filed in the office of the County Recorder/Registrar of Titles for public record on this 24th day of Sept., 2018, at 3:44 o'clock P.M. and was duly recorded as Document Number 2209739.001

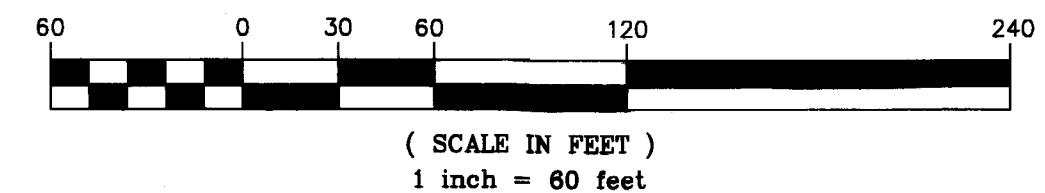
Jonelle M. Sawyer
Jonelle M. Sawyer
County Recorder/Registrar of Titles

By *Annette Schmidt* Deputy



- DENOTES SET 1/2 INCH BY 14 INCH IRON PIPE MARKED BY RLS NO. 25343.
- DENOTES FOUND 1/2 INCH IRON MONUMENT, MARKED RLS NO. 25343.
- DENOTES WET LAND (NOT DELINEATED).

FOR THE PURPOSES OF THIS PLAT THE WEST LINE OF OUTLOT C, EASTVIEW MEADOWS FIRST ADDITION IS ASSUMED TO HAVE A BEARING OF NORTH 01 DEGREES 29 MINUTES 32 SECONDS EAST.



E.G. RUD & SONS, INC.
Professional Land Surveyors
EST. 1977

56.00